

Product datasheet for **RR209436**

Cfb (NM_212466) Rat Tagged ORF Clone

Product data:

Product Type:	Expression Plasmids
Product Name:	Cfb (NM_212466) Rat Tagged ORF Clone
Tag:	Myc-DDK
Symbol:	Cfb
Synonyms:	Bf; Da1-24
Vector:	pCMV6-Entry (PS100001)
E. coli Selection:	Kanamycin (25 ug/mL)
Cell Selection:	Neomycin



[View online »](#)

ORF Nucleotide Sequence:

>RR209436 representing NM_212466
 Red=Cloning site Blue=ORF Green=Tags(s)

TTTTGTAATACGACTCACTATAGGGCGGCCGGGAATTCGTGACTGGATCCGGTACCGAGGAGATCTGCC
 GCC**CGGATCGCC**

ATGACAATGGAGGGTCCCAGCTCTGCTTAGTCTCTTGGTCTTAGCCCTCTCTCCGGAGGTGTGAGCG
 CAACTCCAGTGCTTGAGGCCCGGCCAGGTCTCTTGCTCTCTGGAGGGAGTAGAGATCAAAGCGCGCTC
 CTTCCAACCTTCTCCAAGACGGTCAAGCCCTGGAGTACCTGTGCCCTCTGGCTTCTACCCATACCCCTGTG
 CAGACTCGAACCTGCAAATCCACAGGCTCCTGGAGTGTCTCCAGACCCGGGACCAAAAGATTGTCAAGA
 AGGCAGAAATGCAGAGCAATACGCTGCCACGACCACAGGACTTTGAAAATGGGGAGTTCTGGCCCCGGTC
 CCCCTACTACAACCTGAGTGATCAGATTTCTTTCAATGCTATGATGGCTACACTCTCCGGGGCTCTGCT
 AATCGCACCTGCCAAGAGAATGGCCGTGGGATGGGCAACAGCAATCTGTGATGATGGAGCGGGATACT
 GTCCCAACCCGGTATTCTATTGGGACAAGGAAGGTGGGAAGCCAGTACCGTCTTGAAGACACTGTCAC
 TTACCCTGTAGTCGGGGACTTGTCTACGTGGCTCCAGCAGCGAAGGTGCCAGGAAGGTGGCTCGTGG
 AGTGGGACAGAGCCTTCCTGCCAAGATTCTTCATGTACGACAGCCCTCAAGAGGTGGCCGAAGCATTTTC
 TATCCTCCCTGACAGAGACCATCGAAGGAGCAGATGCGGAGGATGGGCACAGCCAGGGGAACAGCAGAA
 GAGGAAGATTATCCTGGACCCCTCGGGCTCCATGAATATCTACATGGTGTGGATGGATCCGACAGCATC
 GGGGCCAGCAACTTACAGGGGCCAAGCGGTGTCTCGCCAACCTTATTGAGAAGGTGGCGAGTTATGGGG
 TGAAGCCAAGATACGGTCTAGTGACATATGCCACAGTCCCAAGTCTTGGTCTAGAGTGTCTGAGGAGAG
 GAGTAGTGATGCCGACTGGGTACAGAGAAGCTCAACCAATCAGTTATGAAGACCACAAGCTGAAGTCA
 GGGACCAACCAAGAAGGCTCTCCAGGCTGTATACAGCATGATGAGCTGGCCAGGGGATGCTCCGCCTG
 AAGGCTGGAATCGAACCAGCCACGTATCATCATGACTGATGGCTTGCAACATGGGTGGAGACCC
 TGTCACTGTCATTGAGGACATCCGAGACTTGTGGATATTGGCAGGGATCGCAAAAATCCCGGGAGGAT
 TATTTGGATGTGTATGTGTTGGGGTCGGGCTCTGGTGGACCCTGTGAACATCAATGCCTTGGCTTCCA
 AAAAGAACAATGAGCAGCATGTGTTCAAGGTCAAGGACATGGAGGATCTGGAGAACGTCTTCTACAAAAT
 GATCGATGAAACCAATCTCTGGGTCTCTGTGGCATGGTGTGGGAGCATCAGAAAGGCGGTGATTATTAC
 AAGCAACCATGGCAAGCCAAGATCTCAGTCACTCGTCTCTGAAAGGACATGAGAAGTGTATGGGGCCG
 TGGTGTCCGAGTACTTCGTGCTGACAGCAGCGCATTGCTTACAGTGAAGATCAGAAACACTCCATCAA
 GGTCACCGTGGAGGGGAAAAGGCGGGACCTGGAGATTGAAGAGTCTGTCCACCCTAATTACGACATC
 AATGGGAAAAAGGCAGAAGGAATCTCTGAGTTCTATGACTATGATGTTGCCCTCATCAAGCTCAAGACCA
 AGCTGAAGTACAGCCAGACTCTCAGGCCATCTGTCTCCCTGCACAGAGGGAACCCAGCCTTGGC
 GCTTCTCAGACAGCCACCTGCAAACAGCACAAGGAAGAGTTGCTCCCTATGAAGGACGTCAAAGCTCTG
 TTTGTATCCGAGGAAGGGAAAGCTGACCCGGAAGGAGGTGTACATCAAGAATGGGGAAAAGAAAGCCA
 GTTGTGAGAGAGATGCTACAAAGGCCAAGGCTATGAGAAGGTCAAAGTTGCCTCTGAGGTGGTCAACCC
 CAGGTTCTGTGCACCGGAGGGGTAGATCCCTATGCTGACCCCAACATGCAAAGGAGACTCCGGGGGC
 CCTCTCATTGTTCAAGAGAAGCCGCTTATTCAAGTTGGTGTGATCAGCTGGGGAGTAGTGGATGTCT
 GCAAAGACCCGAGCGGCAACAGTTGGTGCCCTCTATGCCGGGACTTCCACATCAATCTTCCAGGT
 GCTGCCCTGGCTAAAGGAGAAGCTCAAAGACGAGGACTTGGGTTTCTTA

ACGCGTACGCGGCCGCTCGAGCAGAAACTCATCTCAGAAGAGGATCTGGCAGCAAATGATATCCTGGATT
 ACAAGGATGACGACGATAAGGTTTAA

Protein Sequence: >RR209436 representing NM_212466
 Red=Cloning site Green=Tags(s)

MTMEGPQLCLVLLVGLSSGGVSATPVLEARPQVSCSLEGVEIKGGSFQLLQDQQALEYLCPSGFYPPYV
 QTRTCKSTGWSVLQTRDQKIVKKAECRAIRCPRPQDFENGEFWRSPYYNLSDQISFQCYDGYTLRGS
 NRTCQENGRWDGQTAICDDGAGYCPNPGIPIGTRKVGVSQYRLDVTYHCSRGLVLRGSQQRRCQEGGSW
 SGTEPSCQDSFMYDSPQEVAEAFLLSSLTETIEGADAEDGHSPGEQQKRKIILDPSGSMNIYMLDGS
 GASNFTGAKRCLANLIEKVASYGVKPRYGLVTYATVPKVLVVRVSEERSSDADWVTEKLNQISYEDHKLK
 GTNTKKALQAVYSMMSWPGDAPPEGWNRTRHVIIMTDGLHNMGGDPVTYIEDIRDLLDIGRDRKNPRED
 YLDVYVFGVGPLVDPVINALASKKNEQHVFKVDMEDLENVFKMIDETKSLGLCGMVWEHQKGGDY
 KQPWQAKISVTRPLKGHENCMGAVVSEYFVLTAAHCFTVEDQKHSIKVNVGKRRDLEIEEVLFHPNYDI
 NGKKAEGISEFYDYDVALIKLTKLKYSQTLRPICLPCTEGTTRALRLPQTATCKQHKEILLPMKDVKAL
 FVSEEGKLRTRKEVYIKNGEKKASCERDATKAQGYEKVKVASEVVTPrFLCTGGVDPYADPNTCKGDSGG
 PLIVHKRSRFIQGVISWGVVDVCKDPRRQLVPSYARDFHINLFQVLPWLKEKLDKDEDLGF

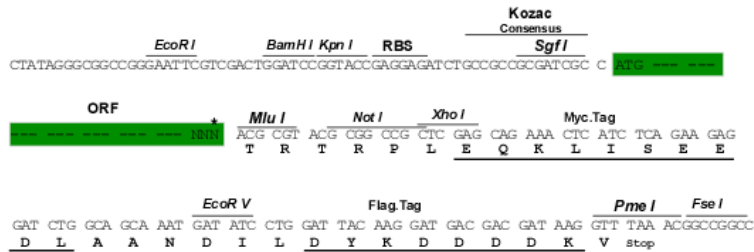
TRTRPLEQKLISEEDLAANDILDYKDDDDKV

Restriction Sites:

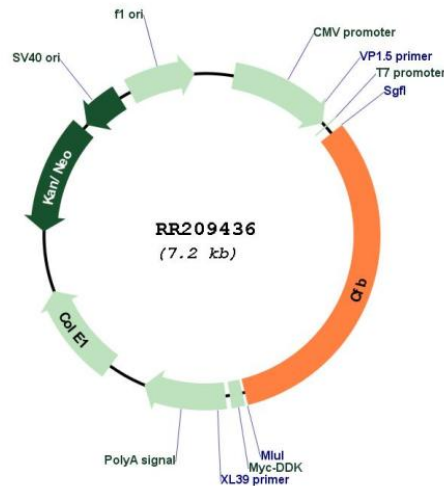
Sgfl-MluI

Cloning Scheme:

Cloning sites used for ORF Shuttling:



* The last codon before the Stop codon of the ORF

Plasmid Map:


ACCN: NM_212466

ORF Size: 2289 bp

OTI Disclaimer: The molecular sequence of this clone aligns with the gene accession number as a point of reference only. However, individual transcript sequences of the same gene can differ through naturally occurring variations (e.g. polymorphisms), each with its own valid existence. This clone is substantially in agreement with the reference, but a complete review of all prevailing variants is recommended prior to use. [More info](#)

OTI Annotation: This clone was engineered to express the complete ORF with an expression tag. Expression varies depending on the nature of the gene.

Components: The ORF clone is ion-exchange column purified and shipped in a 2D barcoded Matrix tube containing 10ug of transfection-ready, dried plasmid DNA (reconstitute with 100 ul of water).

Reconstitution Method:

1. Centrifuge at 5,000xg for 5min.
2. Carefully open the tube and add 100ul of sterile water to dissolve the DNA.
3. Close the tube and incubate for 10 minutes at room temperature.
4. Briefly vortex the tube and then do a quick spin (less than 5000xg) to concentrate the liquid at the bottom.
5. Store the suspended plasmid at -20°C. The DNA is stable for at least one year from date of shipping when stored at -20°C.

RefSeq: [NM_212466.3](#), [NP_997631.2](#)

RefSeq Size: 2573 bp

RefSeq ORF: 2292 bp

Locus ID: 294257

Cytogenetics:	20p12
MW:	85.4 kDa
Gene Summary:	predicted gene; component of the alternative pathway of complement activation; may be linked to the major histocompatibility complex and thus involved in the immune response [RGD, Feb 2006]