

Product datasheet for **RR209423**

Rpain (NM_001033060) Rat Tagged ORF Clone

Product data:

Product Type: Expression Plasmids
Product Name: Rpain (NM_001033060) Rat Tagged ORF Clone
Tag: Myc-DDK
Symbol: Rpain
Synonyms: RGD1308492
Vector: pCMV6-Entry (PS100001)
E. coli Selection: Kanamycin (25 ug/mL)
Cell Selection: Neomycin
ORF Nucleotide Sequence: >RR209423 representing NM_001033060
Red=Cloning site Blue=ORF Green=Tags(s)

TTTTGTAATACGACTCACTATAGGGCGGCCGGAATTCGTCGACTGGATCCGGTACCGAGGAGATCTGCC
GCC**CGGATCGCC**

ATGGCCGAATCCTCGGGTCTCCGCACCGCTTATTGTACAAGCAGGTGGGCTCGCCCCGTGAAAGAAA
CTTTCAGGCAGGGATGTCTTGAGAGGATGAGAAACAGCCGGCACAAGCTCCTGAACAGGTACCGCCAGGC
TGCAGGTAGCACACTGGGGACAGCCTCAGACAGACTTCTGTGCAAGAAGTAATGGAGGAAGAGTGGAAAT
TCTTTGCAGTCTGTAGAGAACTGTCCAGAGGCCTTGCTTCAGTTGGAATTGCCACTGAACCTAGCTGTGC
TGCAGGACATCGAACAGGAGCTGTGGAATGAAGAAAAGTCCATCATAAGTGAGTACGAGAAGGGCTTACA
GTTTGATGAAAGTTGTCTCAACAGCATGTTGGCGGAGTGGGAAGCAAACCCCTCATCTGTCTGTGTGT
ATAAAGTACAACCTGAGAATTAAGAAGTGTGGTCACGTGTCCGTGTGGCCTGCACATCCCATCTCACT
CAACAGACCTGACAGAGCAGAAGCTTCGGGCCTGTTTGAAGGAAATGTGAACGAGCACAGTGCACACTG
TCCCCACATCCCTGAATTTTCAGTCACCGGTGGAACAGAAGAAAAGCCTAGTCTTCTGATGAGCTGCCTA
GCTTATAAGCTACACTGT

ACGCGTACGCGGCCGCTCGAGCAGAACTCATCTCAGAAGAGGATCTGGCAGCAAATGATATCCTGGATT
ACAAGGATGACGACGATAAGGTTTAA



[View online »](#)

Protein Sequence: >RR209423 representing NM_001033060
Red=Cloning site Green=Tags(s)

MAESSGSPHRLLYKQVGSPPWKETFRQGCLERMNRNRHKLNNRYRQAAGSTLGTASDRLLVQEVMEEEWN
 SLQSVENCPEALLQLELPLNLAVLQDIEQELWNEEKSIISEYEKGLQFDESLNSMLAEWEANPLICPVC
 IKYNLRIMNSVVTCPGLHIPSHSTDLTEQKLRACTLEGVNEHSAHCPHIPEFSVTGGTEEKPSLLMSCL
 AYKLHC

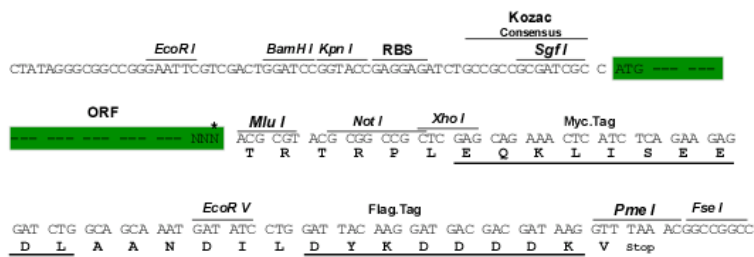
TRTRPLEQKLISEEDLAANDILDYKDDDDKV

Restriction Sites:

Sgfl-MluI

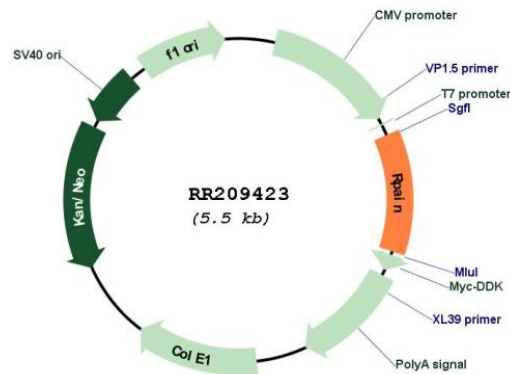
Cloning Scheme:

Cloning sites used for ORF Shuttling:



* The last codon before the Stop codon of the ORF

Plasmid Map:



ACCN: NM_001033060

ORF Size: 648 bp

OTI Disclaimer:	The molecular sequence of this clone aligns with the gene accession number as a point of reference only. However, individual transcript sequences of the same gene can differ through naturally occurring variations (e.g. polymorphisms), each with its own valid existence. This clone is substantially in agreement with the reference, but a complete review of all prevailing variants is recommended prior to use. More info
OTI Annotation:	This clone was engineered to express the complete ORF with an expression tag. Expression varies depending on the nature of the gene.
Components:	The ORF clone is ion-exchange column purified and shipped in a 2D barcoded Matrix tube containing 10ug of transfection-ready, dried plasmid DNA (reconstitute with 100 ul of water).
Reconstitution Method:	<ol style="list-style-type: none">1. Centrifuge at 5,000xg for 5min.2. Carefully open the tube and add 100ul of sterile water to dissolve the DNA.3. Close the tube and incubate for 10 minutes at room temperature.4. Briefly vortex the tube and then do a quick spin (less than 5000xg) to concentrate the liquid at the bottom.5. Store the suspended plasmid at -20°C. The DNA is stable for at least one year from date of shipping when stored at -20°C.
RefSeq:	NM_001033060.1 , NP_001028232.1
RefSeq Size:	739 bp
RefSeq ORF:	651 bp
Locus ID:	287463
UniProt ID:	Q4G2Y1
Cytogenetics:	10q24
MW:	24.5 kDa
Gene Summary:	Mediates the import of RPA complex into the nucleus, possibly via some interaction with importin beta. Sumoylation mediates the localization of RPA complex into the PML body of the nucleus, thereby participating in RPA function in DNA metabolism (By similarity). [UniProtKB/Swiss-Prot Function]