

Product datasheet for **RR209392**

Snap91 (NM_031728) Rat Tagged ORF Clone

Product data:

Product Type:	Expression Plasmids
Product Name:	Snap91 (NM_031728) Rat Tagged ORF Clone
Tag:	Myc-DDK
Symbol:	Snap91
Synonyms:	Ap180
Vector:	pCMV6-Entry (PS100001)
E. coli Selection:	Kanamycin (25 ug/mL)
Cell Selection:	Neomycin



[View online »](#)

ORF Nucleotide Sequence:

>RR209392 representing NM_031728
 Red=Cloning site Blue=ORF Green=Tags(s)

TTTTGTAATACGACTCACTATAGGGCGGCCGGGAATTCGTCGACTGGATCCGGTACCGAGGAGATCTGCC
 GCC**CGGATCGCC**

ATGTCGGGCCAAACGCTCACGGATCGGATCGTCCGCTCAGTACAGCGTACTGGCTCTGCTGTAGCAA
 GAGCCGCTGCAAAGCCACCACTCATGAGGTGATGGGCCCAAGAAGAAGCACCTGGACTATTTGATCCA
 GGCTACCAACGAGACCAATGTCAATATTCCTCAGATGGCGGATACCCTCTTTGAGCGGGCGACAAACAGC
 AGCTGGGTGGTGGTATTTAAAGCTTTAGTGACCACACACCACCTCATGGTGCACGGAAATGAGAGATTTA
 TTCAGTATTTGGCCTCTAGAAAACGCTGTTCAACCTGAGCAACTTTCTAGATAAGAGTGGATCCACGG
 TTATGATATGTCCACGTTACACGAGTTATAGTAGATACTTGAATGAGAAGGCTTTCTCCTACAGACAG
 ATGGCATTGACTTTGCCAGAGTGAAGAAAGGGGCCGACGGTGTATGAGGACAAATGGTTCCTGAAAAGT
 TGCTGAAGAGCATGCCAATCCTGCAGGGGCAGATCGACGCACTGCTGGAGTTCGATGTGCATCCAATGA
 GCTAACAAATGGTGTCAAAATGCTGCATTTATGCTTCTTTTCAAAGATCTTATCAAAGTGGTTCCTGTC
 TACAATGACGGGCTCATTAACTACTTGAAAAATTTTTGAGATGAAGAAAGGTCAATGCAAAGACGCGC
 TAGAAATTTACAACGATTTCTAACTAGAATGACTCGAGTCTCCGAATTCCTCAAGGTCCGCGACGAAGT
 TGGTATTGATAAAGGTGACATTTCCGACCTCACACAGGCTCCCAGCAGTCTTATGGAGACCCTTGAACAA
 CATCTAAATACCTAGAAGGAAAGAAACCTGGAACAATGAAGGATCTGGTGTCCCTCTCCATTAAGTA
 AGTCTTCTCCAGCCAACTGTTACATCTCCTAATTCTACACCAGCTAAAATATCGACACGTCCCACC
 AGTCGACATCTTTGCAACAGCATCCGCGGCTGCCCCAGTCAGCTCTGCTAAGCCATCAAGCGATCTCCT
 GATCTTCAGCCAGACTTCTCCGAGCACGTGCGGGGCAGCAGCGCTGTACCACCACCTACTGGGGGAG
 CCATCGGTGGGAGACCTTTTGGGAGAGGATTCCTTGCTGCACCTTTCCTCTGTTCCCTGAAAGCACC
 GATTTCTGACCAATTTGACCAGAACCTTCCCCTCCTACTACAACCACCTGAACCTGCTTCAGCTTCTGCC
 TCAGCCACCACAGCTGTGACAGCTGCCACTACAGAAGTGGATCTCTTTGGAGATGCCTTTGCAGCTTCTC
 CTGGGGAGGCCCTGCAGCATCCGAAGGGGCCACGGCACCAGCTACCCCGGCCCGGTGGCTGCAGCTCT
 TGATGCATGCTCAGGAAATGACCCTTTTGGCCATCTGAAGGTAGCGCAGAGGCTGCACCTGAGCTCGAC
 CTCTTTGCAATGAAGCCACCTGAGACCAGCGCTCCTGTAGTTACCCCTACAGCTAGCACAGCCCCCAG
 TTCCCAGCACTGCTCCTTCTCCTGCTCCCACGGCTGTGGCAGCCACTGCTGCCACCACCACCGCCCGC
 TGCAGCTACCACCACCTGCCACCCTCTGCTGCTGCTGCCACCACCGCCGCTGCTCCTCTGCTCTAGAT
 ATCTTTGGTGATTTGTTGATTCTGCTCCTGAAGTTGCTGCGGCATCTAAGCCGACGTGGCTCCTAGCA
 TAGACCTGTTTGGCACAGACGCTTCTCCTCCCCACCACGAGGGGCTCTCCGGTGCCTGAGAGTCTCT
 CACTGCTGACCTCTTATCCGGGTCTGGGTTTCACTGTGCTGAGGATGACCGTCATGTTCCCTGTCTTC
 ACTGCTGTGGACGCGTTTGCAGCGCCGTCGCTGCATCCACTGCCTCTCCTGCAAAGGCGGAGTCCCTCGG
 GTGTATAGACCTTTTGGGGATGCGTTTGAAGTAGTGCTTCTGAAACCCAGCCAGCACCACAGGCTGT
 TTCTAGTTCATCAGCATCGGCAGATCTACTGGCTGGATTTGGGGTCTTTTATGGCCCCCTTCTACAACA
 CCTGTGACTCCAGCTCAGAATAACCTGCTGCAACCAATTTTGGAGCAGCTTTTGAACAACGCCTTCGA
 CTTCAAGCAGCAGCTCCTTCGACCCATCAGGCGATCTTCTGATGCCAACCATGGCACCCTCCGGGCAGCC
 TGCCCCGTCTCAATGGTCCCACCCAGTCTGCAATGTCAGCCAGCAAAGGCCTTGAAGTGCCTTGAC
 TCGTCTGGCCAGCTTAGTAGGCAATCTTGGGATTTCTGGTACCACATCAAAAAGGGAGATCTCCAGT
 GGAATGCTGGGAGAAGAAGTTGACCGGTGGAGCCAACCTGGCAACCAAAAGTCACTCCGGCCACATGGTC
 AGCAGGCGTTCCACCGAAGGCACTGTTCTCCAACAGCTCAGTCCCTCCGGGTGCCGGCGCCCGTCT
 GTTGGGCAACCTGGAGCAGGATATGGAATGCCTCCTGCGGGGACAGGCATGACCATGATGCCTCAGCAGC
 CAGTATGTTTGCACAGCCATGATGAGGCCACCTTTGGAGCTGCAGCTGTGCCGGCACACAGCTTTC
 TCCAAGCCCTACACCTGCCACTCAGAGTCCCAAGAACTCCAGCCAAGGACCCGTTAGCGGATCTTAAC
 ATCAAGGATTTCTTG

AGCGGACCGACGCGTACGCGGCCGCTCGAGCAGAACTCATCTCAGAAGAGGATCTGGCAGCAAATGATATCC
 TGGATTACAAGGATGACGACGATAAGGTTTAA

Protein Sequence: >RR209392 representing NM_031728
 Red=Cloning site Green=Tags(s)

MSGQTLTDRIAAAQYSVTGSAVARAVCKATTHEVMGPKKKHLDYLIQATNETNVNIPQMADTLFERATNS
 SWVVVFKALVTTHLMVHGNERFIQYLASRNTLFNLSNFLDKSGSHGYDMSTFIRRYSRYLNEKAFSYRQ
 MAFDFARVKKGADGVMRTMVPEKLLKSMPI LQGQIDALLEFDVHPNELTNGVINAAMFLFKDLIKLFAC
 YNDGVINLLEKFFEMKKGQCKDALEIYKRFLTRMTRVSEFLKVADEVGIDKGDIPDLTQAPSSLMETLEQ
 HLNTLEGGKPGNNEGSGAPSPLSKSSPATTVTSPNSTPAKTI DTSPVDFATASAAAPVSSAKPSSDLL
 DLQPDFSGARAGAAAPVPPPTGGATAWGDLLGEDSLAALSSVPSEAPI SDPFAPEPSPPTTTTPEASASA
 SATTAVTAATTEVDLFGDAFAASPEAPAASEGATAPATPAPVAAALDACSGNDPFAPSEGSAAEAPELD
 LFAMKPPETSAPVVPTASTAPPVPATAPSPAPTAVAATAATTTAAAAATTTATTSAAAATTAAPPALD
 IFGDLFDSAPEVAASKPDVAPSIDLFGTDAFSSPPRGASVPPESSLTADLLSGSGFHCAEDDRHVPLFF
 TAVDAFAASPASTASPAKAESSGVIDLFGDAFGSSASETQPAPQAVSSSSASADLLAGFGGSFMAPSTT
 PVTPAQNLLQPNFEAAFSTTPSTSSSSFDPSGDL LMPMAPSGQPAPVSMVPPSPAMSASKLGSDDL
 SSLASLVGNLGISGTTSKKGD LQWNAGEKLLTGGANWQPKVTPATWSAGVPPQGTVPPTSSVPPGAGAPS
 VGQPGAGYGMPPAGTGMTMPQPVMF AQPMRPPFGAAAVPGTQLSPSPATQSPKPPAKDPLADLN
 IKDFL

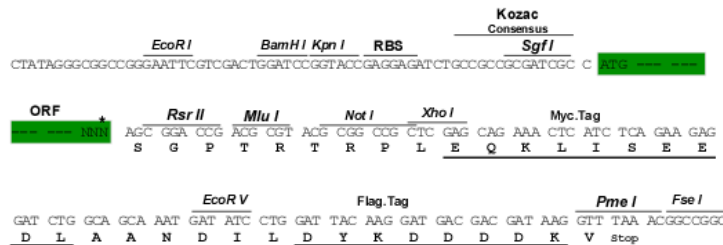
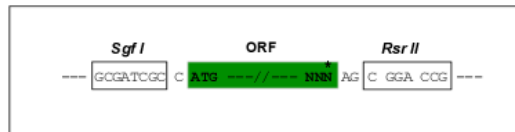
SGP TRTRPLEQKLI SEEDLAANDILDYKDDDDKV

Restriction Sites:

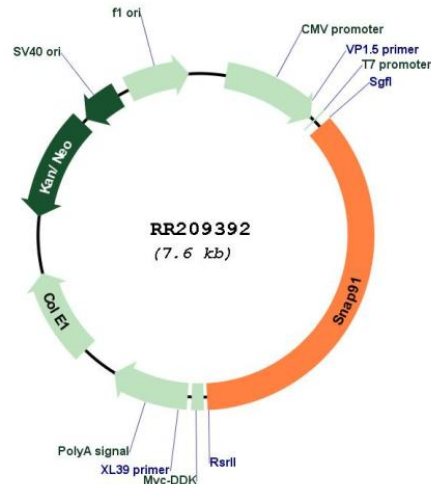
SgfI-RsrII

Cloning Scheme:

Cloning sites used for ORF Shuttling:



* The last codon before the Stop codon of the ORF

Plasmid Map:


ACCN: NM_031728

ORF Size: 2745 bp

OTI Disclaimer: The molecular sequence of this clone aligns with the gene accession number as a point of reference only. However, individual transcript sequences of the same gene can differ through naturally occurring variations (e.g. polymorphisms), each with its own valid existence. This clone is substantially in agreement with the reference, but a complete review of all prevailing variants is recommended prior to use. [More info](#)

OTI Annotation: This clone was engineered to express the complete ORF with an expression tag. Expression varies depending on the nature of the gene.

Components: The ORF clone is ion-exchange column purified and shipped in a 2D barcoded Matrix tube containing 10ug of transfection-ready, dried plasmid DNA (reconstitute with 100 ul of water).

Reconstitution Method:

1. Centrifuge at 5,000xg for 5min.
2. Carefully open the tube and add 100ul of sterile water to dissolve the DNA.
3. Close the tube and incubate for 10 minutes at room temperature.
4. Briefly vortex the tube and then do a quick spin (less than 5000xg) to concentrate the liquid at the bottom.
5. Store the suspended plasmid at -20°C. The DNA is stable for at least one year from date of shipping when stored at -20°C.

RefSeq: [NM_031728.1](#), [NP_113916.1](#)

RefSeq Size: 3419 bp

RefSeq ORF: 2748 bp

Locus ID: 65178

UniProt ID: [Q05140](#)

Cytogenetics: 8q31

MW: 93.5 kDa

Gene Summary: plays a role in clathrin-dependent assembly of synaptic vesicles at the presynaptic terminal [RGD, Feb 2006]