

Product datasheet for **RR209385**

Pi4kb (NM_031083) Rat Tagged ORF Clone

Product data:

Product Type:	Expression Plasmids
Product Name:	Pi4kb (NM_031083) Rat Tagged ORF Clone
Tag:	Myc-DDK
Symbol:	Pi4kb
Synonyms:	Pik4cb
Mammalian Cell Selection:	Neomycin
Vector:	pCMV6-Entry (PS100001)
E. coli Selection:	Kanamycin (25 ug/mL)



[View online »](#)

ORF Nucleotide
Sequence:

>RR209385 representing NM_031083
 Red=Cloning site Blue=ORF Green=Tags(s)

TTTTGTAATACGACTCACTATAGGGCGGCCGGAATTCGTCGACTGGATCCGGTACCGAGGAGATCTGCC
 GCC**CGGATCGCC**

ATGGGAGACATGGTAGTGGAGCCTGCCACCTGAAGCCAATTCTGAGCCTACTCTAGCCATCAGGGA
 ATAACGGGGGCTCCCTACTAAGCGTCATCACGGAGGGGTCGGGAACTGTCAGTGATTGACCCAGAGT
 GGCCAGAAAGCCTGCCAGGAGTACTGGAGAAAGTCAAGCTTTTGCATGGAGGTGTAGCCATCTTAGC
 AAAGGCAGCCACTGGAGTTGGTTAATGGGGATGGTGTGGACAATGAGATCCGTTGCCTAGATGATCCAC
 CTACCGAGATCAGGGAGGAAGAAGATGAGATGGAGCCTGGTGTGGTCTCTGGCACAGCCAAAGGAACAAG
 AAGAAGACGACAGAACAACCTCAGCCAAACAGTCTTGGCTCCTGAGGCTGTTTGAATCAAACTATTTGAC
 ATCTCTATGGCCATTTCACTTGTATAACTCCAAGGAGCCGGGAGTGAAGCCTACATTGGCAACCGGC
 TCTTCTGCTTTCGCAATGAGGATGTGGACTTCTATTTGCCCCAGTTGCTTAACATGTATATCCATATGGA
 TGAGGATGTGGGTGATGCCATTAACCCCTACATAGTCCACCGTTGTCGCCAGAGCATCAACTTTCCCTC
 CAGTGTGCCCTGTTGCTTGGGGCCTACTCTCAGACATGCACATTTCCACTCAACGACACTCCCGAGGGA
 CCAAGTACGGAAGCTAATCCTCTCAGATGAGCTGAAGCCAGCTCACCGAAAGAGGGAGCTGCCAATTT
 AAGCCAGCCCTGACACAGGACTGTCTCCCTCTAAAAGGACTCACCGAGCCTCTAAGTCAGATGCCACG
 GCCAGCATAAGTCTCAGCAGCAACCTGAAACGAACAGCCAGCAACCCCTAAAGTGGAGAATGAGGATGAGG
 AGCTCTCCTCCAGCACCAGAGTATTGATAATTCATTAGTTCCTGTCCGGCTGGCCCTGAGCGAGA
 ATTCATCAAGTCTTGATGGCAATCGGCAACGGCTGGCCACGCTCCCCACTAAAGAGCAAAAAACAA
 AGGTGATCTCAGAATTTCCCTGCTCAACCATAAGCTCCCTGCCGAGTCTGGCTGCCACAGCTGGCT
 TTGACCACCGTGGTCCGTGTGCCCCACACAAAGCTGTTGCTCAATTCCAAGGATAAGGCTCCCTA
 CCTGATCTATGTGGAAGTCTTGAATGTGAAAACCTCGACACAACCTAATGTTCTGCCCGGATTCCTGAA
 AACCGAATTCGGAGTACGAGGTCTGTGGAGAACCTGCCGGAATGTGGTATCACTCACGAGCAGCGGGCTG
 GCAGTTCAGCACTGTGCCAATTATGACAATGACGATGAAGCCTGGTCGGTGGATGACATAGGCGAGCT
 GCAGGTGGAGCTCCAGAAAGTGCACACCAACAGCTGTGACAACATCTCTCAGTTCGCGTGGACAGCATC
 ACCAGCCAGGAGCAAGGAGCCTGTGTTTCATTGCGGCAGGGGACATCAGACGGCGCCTTTCAGAACAGC
 TGGCTCACACTCCACAGCCTTCAAACGAGACCCTGAAGACCCTTCTGCAGTCGCCCTCAAAGAGCCCTG
 GCAGGAGAAAGTGGGAGGATCAGAGAAGGTTCCCGTATGGCCATTTCCCAATTGGCGACTCCTTTCA
 GTCATTGTCAAGTGTGGAGATGACCTTCGCCAGGAGCTGCTGGCTTTCCAGGTGTTGAAACAACGTCAGT
 CCATTTGGGAACAGGAGCGAGTGCCTCTTTGGATCAAGCCATATAAGATTCTTGTGATTTAGCTGACAG
 TGGCATGATTGAACAGTAGTCAACGCTGTGTCCATCCACCAGGTGAAGAAACAGTCACAGCTCTCCTTG
 CTCGATTACTTCTGCAGGAGCATGGCAGTTACACCCTGAGGCATTCTCAGTGCCAGCGCAATTTTG
 TGCAAAGTTGTGCTGGCTACTGCTTGGTCTGCTACCTATTACAAGTCAAGGACAGGCACAATGGGAACAT
 CCTTCTGGACGCAGAAGTCCATCATCCACATCGACTTGGCTTCATCCTTTCCAGCTCACCCGAAAC
 CTGGGCTTCGAGACGTCAGCCTTAAAGCTGACCACAGAATTTGTGGATGTAATGGCGGCCTGAACGGTG
 ATATGTTCAACTACTATAAGATGCTCATGCTGCAAGGGCTGATCGCTGCTCGAAACACATGGACAAGGT
 GGTACAGATTGTGGAGATCATGCAGCAAGTTCTCAGCTTCTTGTGCTTCCATGGCTCCAGCACCATTTCG
 AACCTCAAAGAGAGGTTCCACATGAGCATGACTGAGGAGCAGCTGCAGCTGCTGGTGGAGCAGATGGTGG
 ACGGCAGCATGAGGTCCATCACCACTACCTACGATGGCTTCCAGTACCTACCAATGGCATCATG

ACGCGTACGCGGCCGCTCGAGCAGAACTCATCTCAGAAGAGGATCTGGCAGCAATGATATCCTGGATT
 ACAAGGATGACGACGATAAGGTTTAA

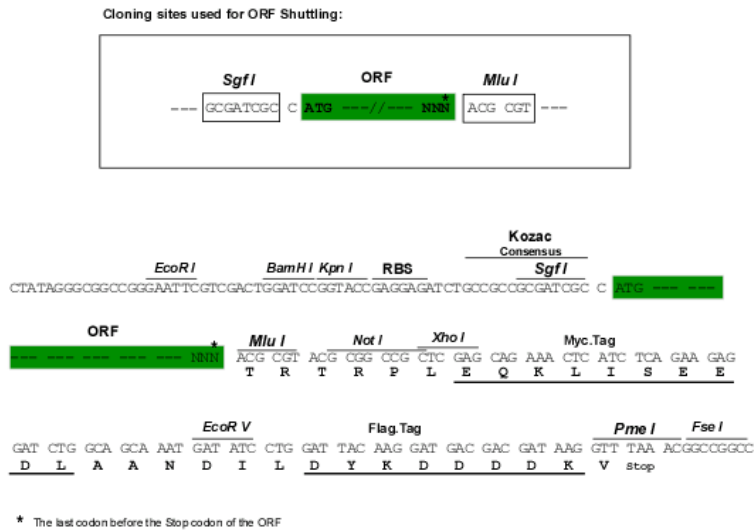
Protein Sequence: >RR209385 representing NM_031083
Red=Cloning site Green=Tags(s)

MGDMVVEPATLKPTSEPTSPSPGNNGSLLSVITEGVGELSVIDPEVAQKACQEVLEKVKLLHGGVAISS
KGSPELVNGDGDVNEIRCLDDPPTIREEEDEMPEGVVSGETAKGTRRRRQNSAKQSWLLRLFESKLF
ISMAYSILYNSKEPGVQAYIGNRLF CFRNEDVDFYLPQLLNMYIHMDDEDVGD AIKPYIVHRCRQSINFS
QCALLLGAYSSDMHISTQRHSRGTCLRKLILSDELKPAHRKRELPTLSPAPDTGLSPSKRTHQRKSDAT
ASISLSSNLKRTASNPKVENEDEELSSSTESIDNSFSSPVRLAPEREFIKSLMAIGKRLATLPTKEQKTQ
RLISELSLLNHKLPARVWLPTAGFDHHVVRVPHQAVVLNSKDKAPYLIYVEVLECFDFTTNVPA
RIPENRIRSTRSVENLPECGITHEQRAGSFSTVPNYDNDDEAWSVDDIGELQVELPEVHTNSCDNISQFSVDSI
TSQESKEPVFIAAGDIRRRLSEQLAHTPTAFKRDPEDPSAVALKEPWQEKVRRIREGSPYGHLPNWRLS
VIVKCGDDL RQELLAFAQVLKQLQSIWEQERVPLWIKPYKILVISADSGMIEPVVNAVSIHQVKKQSQLSL
LDYFLQE HGSYTTEAFLSAQRNFVQSCAGYCLVCYLLQVKDRHNGNILLDAEGHIIHIDFGFILSSPRN
LGFETSAFKLTTEFVDVMGGLNGDMFNYYKMLMLQGLIAARKHMDKVVQIVEIMQQGSQLPCFHGSSTIR
NLKERFHMSMTEEQLQLLVEQMVDGSMRSITTKLYDGFQYLTNGIM

TRTRPLEQKLI SEEDLAANDILDYKDDDDKV

Restriction Sites: Sgfl-MluI

Cloning Scheme:



ACCN: NM_031083

ORF Size: 2448 bp

OTI Disclaimer: The molecular sequence of this clone aligns with the gene accession number as a point of reference only. However, individual transcript sequences of the same gene can differ through naturally occurring variations (e.g. polymorphisms), each with its own valid existence. This clone is substantially in agreement with the reference, but a complete review of all prevailing variants is recommended prior to use. [More info](#)

OTI Annotation: This clone was engineered to express the complete ORF with an expression tag. Expression varies depending on the nature of the gene.

Components: The ORF clone is ion-exchange column purified and shipped in a 2D barcoded Matrix tube containing 10ug of transfection-ready, dried plasmid DNA (reconstitute with 100 ul of water).

Reconstitution Method:

1. Centrifuge at 5,000xg for 5min.
2. Carefully open the tube and add 100ul of sterile water to dissolve the DNA.
3. Close the tube and incubate for 10 minutes at room temperature.
4. Briefly vortex the tube and then do a quick spin (less than 5000xg) to concentrate the liquid at the bottom.
5. Store the suspended plasmid at -20°C. The DNA is stable for at least one year from date of shipping when stored at -20°C.

RefSeq: [NM_031083.1](#), [NP_112345.1](#)

RefSeq Size: 3205 bp

RefSeq ORF: 2451 bp

Locus ID: 81747

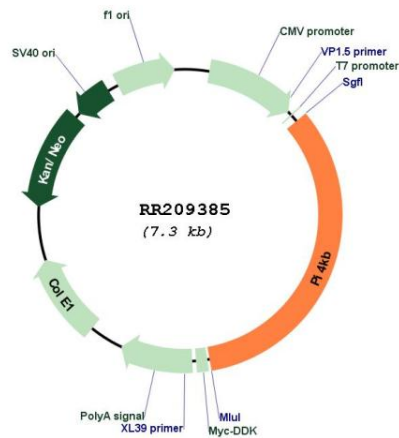
UniProt ID: [O08561](#)

Cytogenetics: 2q34

MW: 91.7 kDa

Gene Summary: phosphorylates phosphatidylinositol (PtdIns) at the D4 position of the inositol ring; may play a role in neuronal differentiation and maturation [RGD, Feb 2006]

Product images:



Circular map for RR209385