

## Product datasheet for **RR209372**

### **Bbs4 (NM\_001106826) Rat Tagged ORF Clone**

#### **Product data:**

Product Type:	Expression Plasmids
Product Name:	Bbs4 (NM_001106826) Rat Tagged ORF Clone
Tag:	Myc-DDK
Symbol:	Bbs4
Vector:	pCMV6-Entry (PS100001)
E. coli Selection:	Kanamycin (25 ug/mL)
Cell Selection:	Neomycin



[View online »](#)

**ORF Nucleotide Sequence:**

>RR209372 representing NM\_001106826  
 Red=Cloning site Blue=ORF Green=Tags(s)

TTTTGTAATACGACTCACTATAGGGCGGCCGGAATTCGTCGACTGGATCCGGTACCGAGGAGATCTGCC  
 GCC**CGGATCGCC**

ATGGCTGAGGAGAAGCTTGGGATGAAAACCTCAGGTTCTGCATCTATTGAATCTCAAAAACCCAGGCCAA  
 AAAAAGCTCCAGAGTTTCTATTGTGGAGAAGCTGAACCTGGCTGATCCATCTCTACTATATCCGGAAGGA  
 TTATGAGGCGTGCAAGGCTGTGATCAAAGAACAGCTTCAGGAGACTCAAGGGCTGTGTAATATGCTATT  
 TATGTCCAAGCACTGATTTCCGCCTGGAAGAAATATCCAAGAATCCCTAGAACTCTTTCAGACGTGTG  
 CTGTTCTCAGCCACAGTGTGCTGATAATCTCAAGCAGGTGGCCAGATCTTTATTTCTTCTGGGAAAACA  
 TAAAGCCGCCACAGAAGTATAATGAAGCAGCTAAGCTCAACCAGAAAGACTGGGAGATCTGCCATAAC  
 CTGGGAGTGTGCTACACTACCTAAAGCAGTTCAGCAAGGCGCAAGACCAATTGCACAGTGCCCTCCAGC  
 TTAACAAGCATGACCTGACTTACATTATGCTGGGAAGATCCATTTACTGCAGGGAGACTTGGATAAAGC  
 CATTGAGATCTACAAGAAAGCAGTGGAGTTCTCTCCAGAAAATACAGAATTCTCACAACTTTAGGATTA  
 CTCTACCTACAGCTTGGTGTTCACAGAAAGCATTGAAACACCTTGGGAATGCAGTACTACGACCCTG  
 CCAACTACAAGGCCATCTTGGCAGCAGGAGCATGATGCAGACTCATGGGACTTTGATGTTGCCCTTAC  
 CAAATACAGAGTTGTAGCTTGTGCTATTCCAGAAAGTCTCCACTTTGGAATAACATTGGAATGTGTTTC  
 TTTGGCAAGAAGAAATACGTGGCAGCTATCAGCTGCCTAAAACGAGCCAACTACTTGGCACCCCTTCGACT  
 GGAAGATTCTGTACAATCTGGGCCTTGCCATTTGACCATGCAGCAGTATGCATCGGCATTCCACTTTCT  
 CAGCGCAGCCATCAACTCCAGCCAAAGATGGGGAACTCTACATGCTCTGGCTGTGGCTTGACCAAC  
 CTGGAAGACATAGAAAATGCCAAAAGAGCTTATGTAGAAGCTGTCGCTGGATAAGTGCAACCCCTTAG  
 TAAACCTGAACTACGCTGTGCTGTACAACAGGGGTGAGAAGAAGGGTGCCTTGGCTCAGTACCAGGA  
 GATGGAGAAGAAGGTCCATTTTCTCAAGGACAACAATCCTCTGGAATTTGATTCTGAGATGGTAGAGATG  
 GCTCAGAAGTTGGGAGCTGCCCTCCAGGTTGGAGAGGCACTGGTCTGGACCAAGCCAGTCAAGATCCCA  
 AGTCAAAGCACCGGACCAATTCAGGCAGCAATCTGCTACTCTCCAGCAGCCTCTGGGCTCTTTCAAGC  
 TCTTGGACAGGCGATGTCTTCGGCAGCTGCACACAGGAAGATCCCTTCAGGTGCTGTAGGAGCCAGCTC  
 ACAAGCCGCCATCACTTCCACTGGAGCCAGAGCCAGAGCCCACTGTGGAGGCGAGTCCAACAGAAGCAT  
 CAGAACAAAACAAGAAAA

**ACGCGT**ACGCGGCCGCTCGAGCAGAAACTCATCTCAGAAGAGGATCTGGCAGCAAATGATATCCTGGATT  
 ACAAGGATGACGACGATAAGGTTTAA

**Protein Sequence:**

>RR209372 representing NM\_001106826  
 Red=Cloning site Green=Tags(s)

MAEEKLGMKTQVPASIESQKPRPKKAPEFPIVEKLNWLIHLYYIRKDYACKAVIKEQLQETQGLCEYAI  
 YVQALIFRLEGNIQESLELFQTCAVLSPQCADNLKQVARSLFLLGKHKAATEVYNEAAKLNQKDWEICHN  
 LGVCYTYLKQFSKAQDQLHSALQLNKHDLTYIMLGKIHLQGDLDKAIIEIYKKADEFSPENTELLTTLGL  
 LYLQLGVYQKA FEHLGNALTYDPANYKAILAAGSMMQTHGDFDVALTKYRVVACAIPEPPLWNNIGMCF  
 FGKKKYVA AISCLKRANYLAPFDWKILYNLGLVHLTMQQYASAFHFLSAAINFQPKMGELYMLLAVALTN  
 LEDIENAKRAYVEAVRLDKCNPLVNLNYAVLLYNQGEKKGALAQYQEMEKKVHFLKDNPNLEFDSEMVEM  
 AQKLGALQVGEALVWTKPVKDPKSKHRTNSGSKSATLQQPLGSFQALGQAMSSAAHRKIPSGAVGAQL  
 TKPPSLPLEPEPEPTVEASPTASEQNKEK

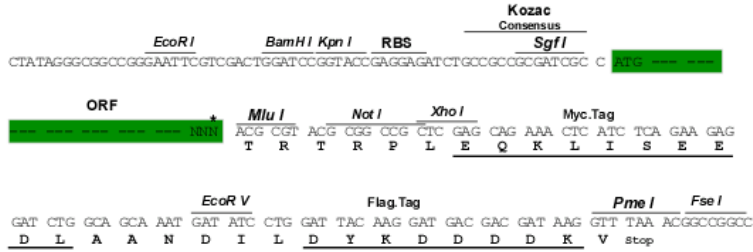
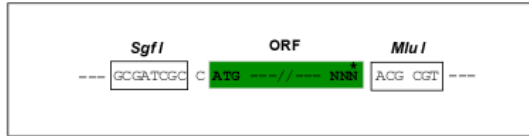
**TR**TRPLEQKLISEEDLAANDILDYKDDDDKV

**Restriction Sites:**

SgfI-MluI

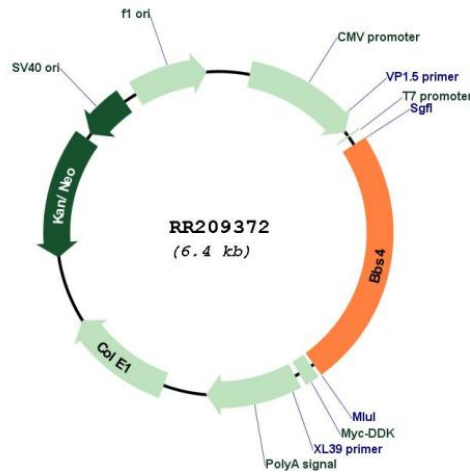
Cloning Scheme:

Cloning sites used for ORF Shutting:



\* The last codon before the Stop codon of the ORF

**Plasmid Map:**



**ACCN:** NM\_001106826

**ORF Size:** 1560 bp

**OTI Disclaimer:** The molecular sequence of this clone aligns with the gene accession number as a point of reference only. However, individual transcript sequences of the same gene can differ through naturally occurring variations (e.g. polymorphisms), each with its own valid existence. This clone is substantially in agreement with the reference, but a complete review of all prevailing variants is recommended prior to use. [More info](#)

**OTI Annotation:** This clone was engineered to express the complete ORF with an expression tag. Expression varies depending on the nature of the gene.

**Components:** The ORF clone is ion-exchange column purified and shipped in a 2D barcoded Matrix tube containing 10ug of transfection-ready, dried plasmid DNA (reconstitute with 100 ul of water).

**Reconstitution Method:**

1. Centrifuge at 5,000xg for 5min.
2. Carefully open the tube and add 100ul of sterile water to dissolve the DNA.
3. Close the tube and incubate for 10 minutes at room temperature.
4. Briefly vortex the tube and then do a quick spin (less than 5000xg) to concentrate the liquid at the bottom.
5. Store the suspended plasmid at -20°C. The DNA is stable for at least one year from date of shipping when stored at -20°C.

**RefSeq:** [NM\\_001106826.1](#), [NP\\_001100296.1](#)

**RefSeq Size:** 2510 bp

**RefSeq ORF:** 1563 bp

**Locus ID:** 300754

**Cytogenetics:** 8q24

**MW:** 58.3 kDa