

## Product datasheet for **RR209362**

### **Kdm1b (NM\_001107343) Rat Tagged ORF Clone**

#### **Product data:**

Product Type:	Expression Plasmids
Product Name:	Kdm1b (NM_001107343) Rat Tagged ORF Clone
Tag:	Myc-DDK
Symbol:	Kdm1b
Synonyms:	Aof1
Vector:	pCMV6-Entry (PS100001)
E. coli Selection:	Kanamycin (25 ug/mL)
Cell Selection:	Neomycin



[View online »](#)

**ORF Nucleotide Sequence:**

>RR209362 representing NM\_001107343  
 Red=Cloning site Blue=ORF Green=Tags(s)

TTTTGTAATACGACTCACTATAGGGCGGCCGGAATTCGTGACTGGATCCGGTACCGAGGAGATCTGCC  
 GCC**CGGATCGCC**

ATGGCGGCATCTCGAGGGCGGTCAAAGAAGAGAAGCAATTTTCGAGCTTTCTCCTGATACCTGCCTTTGA  
 GGAGCTCCGGGGACAGGCAAAGAAGAAGGCTGTAGAGATCACAGAGGAGGACGAGGATGGTTTCGTGCGGA  
 GAAGAAGTACAGAAAGTGTGAAAAGGCAGGCTGTACAACGGCGTATCCTGTGTGCTTTGCAAGCGCTTCT  
 GAGAGGTGTGCCAAGAATGGCTACACCTCCCGATGGTATCACCTTTCTGTGGGGAACACTTCTGCAACG  
 AATGCTTTGACCACTACTACAGAAGCCACAAGGATGGATACGACAAGTACACTGCATGGAAGAGAGTGTG  
 GACCAGCAACGGCAAGACGGAGCCAGCCCAAGGCATTTCATGGCAGACCAGCAGCTGCCCTACTGGGTT  
 CAGTGCACAAAACCCGAGTGTAGAAAGTGGAGGCAGCTTACCAAGGAGATCCAGCTTACTCCACACATGG  
 CGAGGACGTACCGCTGCGGCATGAAGCCAAATACTATTACCAAGCCTGACACCCCTGATCATTGTTCTTT  
 CCCCAGGATCTAAGAGTGTGGAAGTCTCCAACCACTGGTGGTACTCCATGCTCATCCAGCCTCCATTG  
 CTGAAGGACAGTGTGGCAGCCCCGCTGCTCTGCTACTACCCGGACTGCGTGGGCATGAGCCCCCTCT  
 GTACCAAGTACACATCGTGCCGCGTACAGCCACTGCCACCGGCAGTGCCAGCCAGGGGAGATGGAGCC  
 CTCCAAGGCAGCCCCGCTTCGCTCGTTTAGGCATGAACCGGTATTTCCAGCCGTTCTACCAGCCCAAC  
 GAGTGGCGCAAGGCCCTGTGTGCGGCCAGATGTGATGGAACGGATGAGCTCTATGAGTTCCAGAGT  
 ACTCTCGGGACCCACCATGTACCTGGCTTTGAGAAACCTCATCTCGCTCTGTGGTATACAAATGCAA  
 AGAAGCTCTACCCACAGAAGTGCATTCCCCATGTATCGTCCGGGGCCTGTACGCATCCGATGTGTT  
 CAGGAAGTGGAGAGGATCTTTATTTTCATGACAAGGAAAGGCCTCATCAACACGGGAGTTCTCACCCTGG  
 GAGCCGGCCAGCATCTTCTTCTAAACACTACCATAATAAATCTGTTCTGTTGTTGGGAACTGGTCCAGC  
 AGGCTTAGCAGCTGCTAGGCAACTACATAACTTTGGGATGAAGGTGACTGTCTGGAAGCCAAAGACCGA  
 ATCGGAGGCCGTGTCTGGGATGACAAGTCTTTAAAGGCGTGGTAGTAGGAAGAGGACCCAGATTGCA  
 ATGGCTGTATTAATAACCCAGTAGCACTGATGTGTGAGCAACTTGGCATCCGCATGCATAAGTTGGGAGA  
 GAGATGTGACTTAATTCAGGAAGGTGGACGGATAACTGACCCCACTATTGACAAGCGCATGGATTTTCAT  
 TTTAATGCCCTCTGGATGTTGTCTCTGAGTGGAGGAAGGATAAGACTCTGCTCCAAGATGTCCCTTTAG  
 GAGAAAAGATAGAGGAGATCTACCGAGCCTTCGTGAAGGAGTCTGGCATCCAGTTCAGTGAGCTGGAGGG  
 ACAGGTGCTGCAGTTCACCTGAGTAACCTGGAGTATGCGTGTGGCAGCAGCCTGCACCAGGTGTCTGCT  
 CGCTCCTGGGATCACAATGAATTTCCGCCAGTTTGGTGGTACCATACCTCCTAACTCCAGGCTACT  
 CCACGATCGTTGAGAACTGGCTGAAGGCTAGACATTAGACTCAAGTCTCCAGTGCAGAGCATAGATTA  
 CACTGGAGATGAAGTGCAGGTGACCACGACAGATGGCGTGGTGCATTCCGCACAAAAGGTATTAGTCACC  
 GTGCCATTGGCCATGCTACAGAGAGGTGCCATCCAGTTTAAACCCACCGTTGTGAGAGAAAAGATGAAGG  
 CCATCAACAGCTTGGGGGAGGCATCATTGAAAAGATCGCCTTGCAGTTTCCATATAGATTTTGGGACAG  
 TAAAGTTCAAGGTGCTGACTTTTTTGGCCACGTTCTCCAGTGCAGCCAAACGAGGGCTCTTCGCTGTG  
 TTCTATGACATGGGCCCCAGCAGAGTGTACTGATGTGCGTGATCACAGGGGAGGCAGTGGCATCCCTCA  
 GGACCATGGATGACAAGCAGGTGCTGCAGCAGTGCCTGGGCGTCTTCGGGAGCTGTTCAAGGAGCAGGA  
 GATCCCAGATCCCACAAAGTATTTTGTACACGGTGGAAACACAGAGCCATGGATCCAGATGGCCTATAGC  
 TTTGTGAAGACCTTCGGAAGTGGCGAGGCCTATGACATTATTGCTGAAGAAATACAAGGAATGTTTACT  
 TTGCTGGTGGGCAACAAACAGGCATTTCCACAAACTGTTACTGGAGCATATTTGAGTGGTGTTCGAGA  
 AGCGAGCAAGATCGCAGCCTTT

**ACGCGT**ACGCGGCCGCTCGAGCAGAAACTCATCTCAGAAGAGGATCTGGCAGCAATGATATCCTGGATT  
 ACAAGGATGACGACGATAAGGTTTAA

Protein Sequence: >RR209362 representing NM\_001107343  
Red=Cloning site Green=Tags(s)

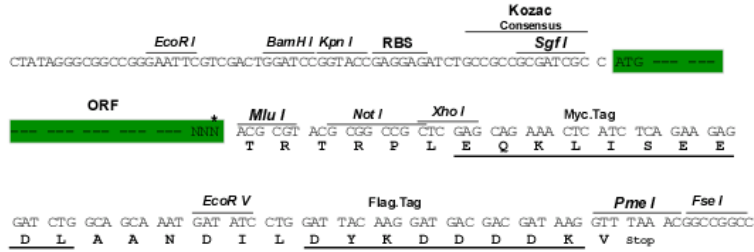
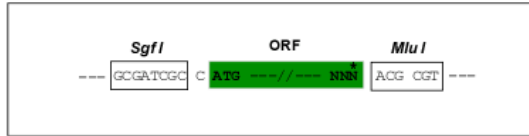
MAASRGRSKRSNFELSPDTLPLRSSGRQAKKAVEITEEDEDGSSEKKYRKCEKAGCTTAYPVCFASAS  
ERCAKNGYTSRWYHLSCGEHFCNECFDHYRSHKDGKYTAWKRVWTSNGKTEPSPKAFMADQQLPYWV  
QCTKPECRKWRQLTKEIQLTPHMARTYRCGMKPNTITKPDTPDHCSFPEDLRVLEVSNHWWYSMLIQPPL  
LKDSVAAPLLSAYYPDCVGMSPSCTSTHRAAVTATATGSASPGEMEPSKAAPASLVLMNRYFQPFYQPN  
ECGKALCVRPDMELDELYEFPEYSRDPTMYLALRNLILALWYTNCKEALTPQKCIPHVIVRGLVIRCV  
QEVERILYFMRKGLINTGVLTVGAGQHLLPKHYHNKSVLVVGAGPAGLAAARQLHNFQMKVTVLEAKDR  
IGGRVWDDKSFKGVVGRGPQIVNGCINNPVALMCEQLGIRMHKLGERCDLIQEGGRITDPTIDKRMDFH  
FNALLDVVSEWRKDKTLLQDVPLGEKIEEYRAFVKESGIQFSELEGQVLQFHLNLEYACGSSLHQVSA  
RSWDHNEFFAQFAGDHTLLTPGYSTIVEKLAEGLDIRLKSVPQSIDYTGDEVQVTTTGDGVHSAQKVLVT  
VPLAMLQRGAIQFNPLSEKMKAINSLGAGIIEKIALQFPYRFWDSKVQGADFFGHVPPSASQRGLFAV  
FYDMGPQQSVLMSVITGEAVASLRTMDDKQVLQQLGVLRELKQEIPDPTKYFVTRWNTPEWIQMAYS  
FVKTFGSGEAYDIIAEEIQGTVYFAGEATNRHFPQTVTGTGAYLSGVREASKIAAF

TRTRPLEQKLISEEDLAANDILDYKDDDDKV

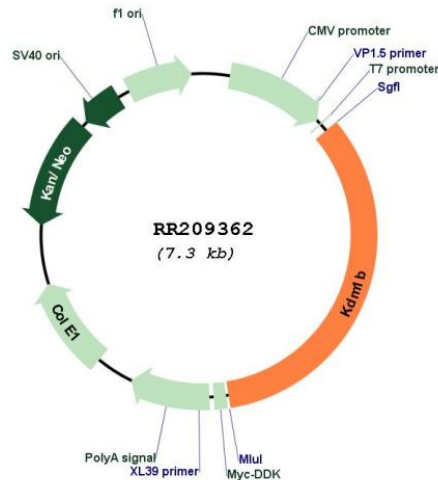
Restriction Sites: Sgfl-MluI

Cloning Scheme:

Cloning sites used for ORF Shuttling:



\* The last codon before the Stop codon of the ORF

**Plasmid Map:**


**ACCN:** NM\_001107343

**ORF Size:** 2472 bp

**OTI Disclaimer:** The molecular sequence of this clone aligns with the gene accession number as a point of reference only. However, individual transcript sequences of the same gene can differ through naturally occurring variations (e.g. polymorphisms), each with its own valid existence. This clone is substantially in agreement with the reference, but a complete review of all prevailing variants is recommended prior to use. [More info](#)

**OTI Annotation:** This clone was engineered to express the complete ORF with an expression tag. Expression varies depending on the nature of the gene.

**Components:** The ORF clone is ion-exchange column purified and shipped in a 2D barcoded Matrix tube containing 10ug of transfection-ready, dried plasmid DNA (reconstitute with 100 ul of water).

**Reconstitution Method:**

1. Centrifuge at 5,000xg for 5min.
2. Carefully open the tube and add 100ul of sterile water to dissolve the DNA.
3. Close the tube and incubate for 10 minutes at room temperature.
4. Briefly vortex the tube and then do a quick spin (less than 5000xg) to concentrate the liquid at the bottom.
5. Store the suspended plasmid at -20°C. The DNA is stable for at least one year from date of shipping when stored at -20°C.

**RefSeq:** [NM\\_001107343.1](#), [NP\\_001100813.1](#)

**RefSeq Size:** 4202 bp

**RefSeq ORF:** 2475 bp

**Locus ID:** 306819

**Cytogenetics:** 17p14

MW: 92.6 kDa