

## Product datasheet for **RR209352**

### **Cttnal1 (NM\_001106649) Rat Tagged ORF Clone**

#### **Product data:**

Product Type:	Expression Plasmids
Product Name:	Cttnal1 (NM_001106649) Rat Tagged ORF Clone
Tag:	Myc-DDK
Symbol:	Cttnal1
Synonyms:	Catnal1
Mammalian Cell Selection:	Neomycin
Vector:	pCMV6-Entry (PS100001)
E. coli Selection:	Kanamycin (25 ug/mL)



[View online »](#)

**ORF Nucleotide Sequence:**

>RR209352 representing NM\_001106649  
 Red=Cloning site Blue=ORF Green=Tags(s)

TTTTGTAATACGACTCACTATAGGGCGGCCGGGAATTCGTCGACTGGATCCGGTACCGAGGAGATCTGCC  
 GCC**CGGATCGCC**

ATGGCCACTTCTACAGCCCCGGTGGTGGCGGTGCGGGAGCTGTCCACTCCTCCAATGCTTCTGGCCTCG  
 CCTTCGACTCGGGACTGGAGATTAAGAACGCGCTCGGTAGAGCAAACCTTCTGCCCCGGTTTCTCAGAT  
 TACCACACTTATTAACCATAAAGATAATACCAAAAAGTCTGATAAGACTCTGCAAGCGATTAGCGCGTG  
 GGACAAGCTGTCAACTTGGCAGTTGGAAGATTTGTAAAGTAGGGGAAGCTATAGCCAATGAAAAGTGGG  
 ATTTGAAAGAAGAAATTAGTATTGCCTGCATCGAAGCTAAACAAGCAGGAGAAACAATCGCTCCCTCAC  
 AGATGTGACCAATGGAACCATTTGGAGTCAGATGGTCAGGTACAATTCTGACAGACAAAACAGGAGTC  
 GTGCAGGCGGCCAGACTGCTGCTCCTCAGTGACAAAAGTGTGCTGCTGGCAGATCAGGTAGTCATCA  
 AGCAAATAGTGACATCGAGAAAACAGGTTCTTGAACCATGAAAAGGCTAGAGAGAGTAAACAGCTTTCA  
 GGAGTTTGTTCAGATATTCAGCCAGTTTGGAAACGAAATGGTGGAGTTTGCATACCTAACGGGAGACAGA  
 CAAAATGATTTGAAAGATGAGAAGAAAAAGGCCAGAAATGGCTGTGGCAGGGCAGTGCTTGAGAAGGGCA  
 CAATGATGCTCCTCACAGCCTCAAAGACGTGTCTCAGGCACCCAGCTGTGAGTCAGCCATAAAAAACA  
 AGAAGGAGTGTGGATCGGATGAGAGCAGCCCTGGAGAAGGTCATCGAGATCGTACTGACTGCAGACTC  
 AACAGAGACACCGACAGCTCATCTGTCAGCATTTTACTGGTATTAAGAGTTGAAGTTGAATATGGAAG  
 CTCTTCGGGAGAAATGTTTACTTCGAGTCCAAGGAGAACCTTTCTGCCGATTGGAGGTCATCTTGGAGCG  
 TGTGGAGGACTTACCGATTCTGCCTACACCAGCCATGAGCACAGGGAACGCATCTTGAAGTGTCTGCG  
 CAGGCCAGGACAGAAGTGCAGCAGTTTCAATTCGGTGTGGATGCAAGCTCAAAGCAGGAAGACAAAGAGCG  
 CGGCCGAGGAGCTGGAATCAGTGTGCTGAAGGTCAGCCACAGCCTGGACGAGCTGAGGAAAGAATCCA  
 TTGTACAGCCATGCAGCTGGCAGCCAGCTGTTAAAATTCATGCCGATCATGTGGTTTTAAAAGCATTAA  
 AAGTTACTGGAGTAGAAGGAAATTTAGAAGCTTTGGCTGAGTATGCCTGTAAACTCTCTGAGCAGAAAG  
 AACAGCTTGTGAGACATGTCGACTGTTGCGGCATGTATCCGGCACAGAACCCCTCGAGATAACGTGCAT  
 GCATGCAGAGGAGACATTCAGGTGACTGGCCAACAGATCATTCTGCTGCTGAAACCCCTGACGTTGCAT  
 CCGTCTAGCAAAATCGCTAAAGAAAACCTGGATGTGTTTTGTGAAGCGTGGGAGTCTCAGATTAGTGATC  
 TGGCAACGCTGCTAAGAGAGATCAGTGATGTGTTGAAGGACGACGAGGAGAGAAGTATGACCATCTTTC  
 ACTTCAAAGCCCATGAAAAATAATGCAAACCTGAAATCAGTGAAGTCTGACAAACCTGATTAGAGGAG  
 CAAGCCAAGATAGCCAAGCTTGGCTGAAGCTGGGATTGCTTTCCTCCGATGCTGACTGTGAAATCGAGA  
 AATGGGAAGATGACGACAACGAGATCGTTTCGACATGGACGGAATATGTCCAGGATGGCCTATTCTCTGTA  
 TTTATTTACTAGAGGAGAGGGGCCACTGAAAACCTCCAGGACTTAATCACTTCTCTGGAGTTTTTGTCT  
 ACAGAGGGATTAAGCTTACTTCAAGCATACAGTCTTTTTCAAACAGCTAAAAGATGATGACAACTTA  
 TGCTTCTCCTGGAAATAAACAACTAATTCCTCTATGCCACCAGCTTACAGACAATAACCAAGACATCTTT  
 GCAGAGTAAAGTGTCTGAAGTTGACAAGTGTGTTACAAGATAAGATCCATGATGACTCTCGTGGTC  
 CAGCTCCTCTCCCTTTGCTATAAGCTACTGAAAAGATGGGAAATGACAGATGGGTCTCTGCGACAAACA  
 AAGATGCCATGGATGGTCAAACC

**ACGCGT**ACGCGGCCGCTCGAGCAGAAACTCATCTCAGAAGAGGATCTGGCAGCAAATGATATCCTGGATT  
 ACAAGGATGACGACGATAAGGTTTAA

**Protein Sequence:** >RR209352 representing NM\_001106649  
Red=Cloning site Green=Tags(s)

MATSTAPGGGGAGAVHSSNASGLAFDSSGLEIRTRSVEQTLPLVVSQITTLINHKDNTKKS~~DKTLQAIQRV~~  
GQAVNLAVGRFVKVGEAIANENWDLKEEISIA~~IEAKQAGETIASLTDVTKWNHLES~~GGQVTILTDKTGV  
VQAARLLLSSVTKVLLLADQVVIKQIVTSR~~NKVLATMERLERVNSFQEFVQIF~~SQFGNEMVEFAYLTGDR  
QNDLKDEKKKARMAVARAVLEKGT~~MMLLTASKTCLRHPSCE~~SAHKNKEGVFDRMRAALEK~~VEIVTDCRL~~  
NRD~~TSSSVSIFTGIKELKLNMEALRE~~NVYFESKENLSAALE~~VILERVE~~FTDSAYTSHEHRERILELSA  
QARTEVQQFISVWMQAQSRKTKSAAEEL~~ELTVLKVSHSLDEL~~RKELHCTAMQLA~~ADLLKFHADH~~VVLKAL  
KVTGVEGNLEALAEYACKLSE~~QKEQLVETCRLLRHVS~~GTEPLEITCM~~HA~~EETFQVTGQQIISAAETL~~TLH~~  
PSSKIAKENLDVFC~~EAWESQISDLATLLREIS~~DVFEGR~~RGEKYDHL~~SLPKPMKNNANL~~KS~~VKSDKPDSEE  
QAKIAKLGKLLSSDADCEIEK~~WEDDDNEIVRHGR~~NMSRMAYSLYLFTRGEGPLKTSQDLIHFLE~~VFA~~  
TEGLKLTSSIQFSKQLKDDDKLMLLLEIN~~KLIPLCHQLQTIT~~KTSLQSKVFLKVDKCVTKIR~~SMMTLV~~  
QLLSLCYKLLKKMG~~NDRWVSATNKD~~AMDGQT

TRTRPLEQKLISEEDLAANDILDYKDDDDKV

**Restriction Sites:**

Sgfl-MluI

**Cloning Scheme:**



**ACCN:** NM\_001106649

**ORF Size:** 2193 bp

**OTI Disclaimer:** The molecular sequence of this clone aligns with the gene accession number as a point of reference only. However, individual transcript sequences of the same gene can differ through naturally occurring variations (e.g. polymorphisms), each with its own valid existence. This clone is substantially in agreement with the reference, but a complete review of all prevailing variants is recommended prior to use. [More info](#)

**OTI Annotation:** This clone was engineered to express the complete ORF with an expression tag. Expression varies depending on the nature of the gene.

**Components:** The ORF clone is ion-exchange column purified and shipped in a 2D barcoded Matrix tube containing 10ug of transfection-ready, dried plasmid DNA (reconstitute with 100 ul of water).

- Reconstitution Method:**
1. Centrifuge at 5,000xg for 5min.
  2. Carefully open the tube and add 100ul of sterile water to dissolve the DNA.
  3. Close the tube and incubate for 10 minutes at room temperature.
  4. Briefly vortex the tube and then do a quick spin (less than 5000xg) to concentrate the liquid at the bottom.
  5. Store the suspended plasmid at -20°C. The DNA is stable for at least one year from date of shipping when stored at -20°C.

**RefSeq:** [NM\\_001106649.1](#), [NP\\_001100119.1](#)

**RefSeq Size:** 3643 bp

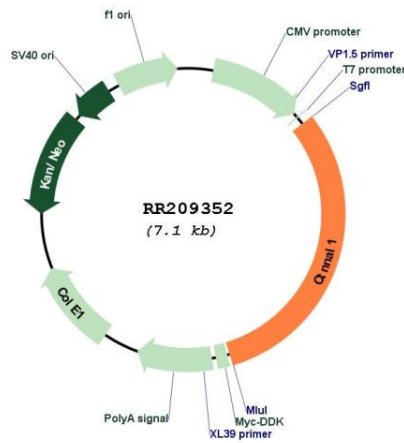
**RefSeq ORF:** 2196 bp

**Locus ID:** 298019

**Cytogenetics:** 5q24

**MW:** 81.6 kDa

**Product images:**



Circular map for RR209352