

Product datasheet for **RR209334**

Cracr2b (NM_001127541) Rat Tagged ORF Clone

Product data:

Product Type: Expression Plasmids
Product Name: Cracr2b (NM_001127541) Rat Tagged ORF Clone
Tag: Myc-DDK
Symbol: Cracr2b
Synonyms: Efcab4a; RGD1560911
Mammalian Cell Selection: Neomycin
Vector: pCMV6-Entry (PS100001)
E. coli Selection: Kanamycin (25 ug/mL)
ORF Nucleotide Sequence: >RR209334 representing NM_001127541
 Red=Cloning site Blue=ORF Green=Tags(s)

TTTTGTAATACGACTCACTATAGGGCGGCCGGAATTCGTCGACTGGATCCGGTACCGAGGAGATCTGCC
 GCC**CGATCGCC**

ATGGCCAGCCCTGGGCCCTGGAGCTGGGCAGGGCCAGGAGGAAGAGGAGGGCAGGAGTCTCAGCAG
 GACATCAAGCAGAGGTGCTGCAGCAGGCCAGGAGCTCTTTGTCCTGTGTGACAAGGACGCCAAGGGCTT
 CATCACTCGTCAGGATTTGCAGGGTCTGCAGAGTGATCTTCCCCTTACACCTGAACAGCTGGAGGCTGTG
 TTTGAAAGTCTGGACCAGGCCACACTGGCTTCTTGACAGCCCGGAGTTCTGTCTAGGCCTGGGAAAT
 TTGTGGGGTGGAGTCGGTCCCAGGTAGAGCCCCCTTGAGGACACCTGAGGAAACCTTTGAGTCGGGCAC
 AGGGGGCTCTCTGGAGGAGGAGGACGATGTAGAAACATTCACACTTCCCTTGAGAAAGCTAGGAGTGCC
 CGGGTCTCTGGAGAGCAATGGGCTGTGAGGACACTCTGGGTCTGGGCTGCAGCGGGAGCGACCCGAGCTGT
 TGGGTTCTCTAGAGGAAATCTGATGCGCGCATCCGCCTGCCTGGAGGCGCGGCCCGGGAGCGCGACGG
 TCTGGAGCAGGCACTTCGGAGCGGGAGAGTGAACACGAGAGGGAGGTGCGCGGACTGTATGAAGAGCTG
 GAGCAGCAGCTTCGGGAGCAGCGACAGCGCCGCGCAGAGTCAGAACCACCCCGGGAGGAAGAGAGGGCC
 ACCTGGAGCTGGAGCTGCAGACCCGAGAGCAGGAGTTGGAGCGCGCAGCCCTGAGGCAGCGAGAGTTGGA
 ACAGCAGCTGCAAGCCCAGGCTGCAGAACAGCTAGAGTACAAGCCAGCACATCCAGTTGCAGAGGGCC
 TATGAGGCCTTACGGGCACAGCTGGACCAGGCGCAAGAGCAGCTCATCCGACTGGAGGGCGAAGCACAGG
 GTCGTCAGGAGCAAACCCAAAGAGATGTGGTTGCTGTCTCCAGGAACATGCAAAAAGAGAAAACCTCAGCCT
 CCTAAGGCAGCTGGAGCTGCTGAGGGAGCTGAATCTGAGGCTTCGAGATGAGAGAGATGCCTGTGAGACT
 AAGCTGTGGGCAGTAGCCACAGGAAGGCTCTAGCTATCGCCACAAGCCGGGACCTATCTACTGTGCTGT
 GTTGTGTGGCTGGGCTCGGCCCCAGACGAGGCTCTGGCCATCTTCTAGTGCCTGA

ACGCGTACGCGGCCGCTCGAGCAGAAACTCATCTCAGAAGAGGATCTGGCAGCAATGATATCCTGGATT
 ACAAGGATGACGACGATAAGGTTTAA



[View online >](#)

Protein Sequence: >RR209334 representing NM_001127541
Red=Cloning site Green=Tags(s)

MASPGPPGAGQGQEEERAGVSAGHQAEVLQQAQELFVLCDKDAKGFITRQDLQGLQSDLPLTPEQLEAV
 FESLDQAHTGFLTAREFCLGLGKFGVSVPGRAPLRTPEETFESGTGGSL EEDDVETFYTSLEKLGVA
 RVLGEQWAVRTLWVGLQREPELLGSLEEILMRASACLEAAARERDGLQALRRRESEHEREVRLYEEL
 EQLREQRQRQSQNPPREEERGHLELELQTREQELERAALRQRELEQQLQARAAEQLEVQAQHIQLQRA
 YEALRAQLDQAQELIRLEGEAQGRQEQTQRDVVAVSRNMQKEKLSLLRQLELLRELNRLRDRERDACET
 KLLGSSHRKALAIHKPGPIYCCCCGWARPPRRGSGHLPSAR

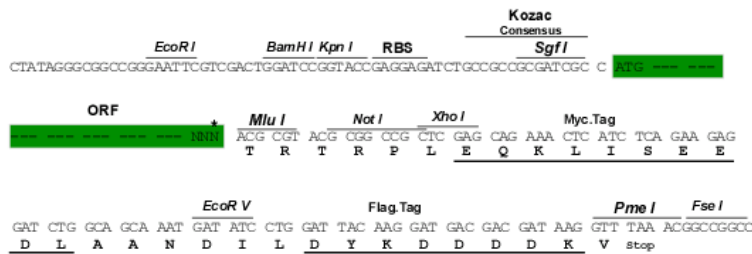
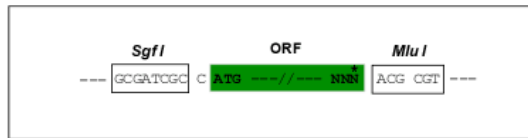
TRTRPLEQKLISEEDLAANDILDYKDDDDKV

Restriction Sites:

SgfI-MluI

Cloning Scheme:

Cloning sites used for ORF Shuttling:



* The last codon before the Stop codon of the ORF

ACCN: NM_001127541

ORF Size: 1179 bp

OTI Disclaimer: The molecular sequence of this clone aligns with the gene accession number as a point of reference only. However, individual transcript sequences of the same gene can differ through naturally occurring variations (e.g. polymorphisms), each with its own valid existence. This clone is substantially in agreement with the reference, but a complete review of all prevailing variants is recommended prior to use. [More info](#)

OTI Annotation: This clone was engineered to express the complete ORF with an expression tag. Expression varies depending on the nature of the gene.

Components: The ORF clone is ion-exchange column purified and shipped in a 2D barcoded Matrix tube containing 10ug of transfection-ready, dried plasmid DNA (reconstitute with 100 ul of water).

Reconstitution Method:

1. Centrifuge at 5,000xg for 5min.
2. Carefully open the tube and add 100ul of sterile water to dissolve the DNA.
3. Close the tube and incubate for 10 minutes at room temperature.
4. Briefly vortex the tube and then do a quick spin (less than 5000xg) to concentrate the liquid at the bottom.
5. Store the suspended plasmid at -20°C. The DNA is stable for at least one year from date of shipping when stored at -20°C.

RefSeq: [NM_001127541.1](#), [NP_001121013.1](#)

RefSeq Size: 1599 bp

RefSeq ORF: 1182 bp

Locus ID: 309112

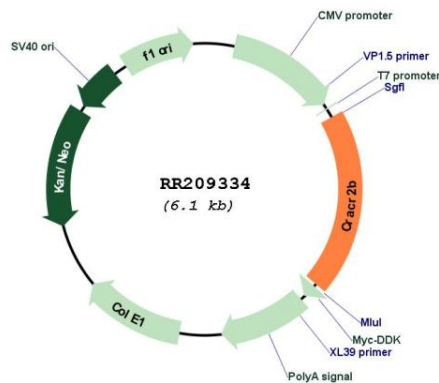
UniProt ID: [B0BNK9](#)

Cytogenetics: 1q41

MW: 44.6 kDa

Gene Summary: Plays a role in store-operated Ca(2+) entry (SOCE).[UniProtKB/Swiss-Prot Function]

Product images:



Circular map for RR209334