

Product datasheet for **RR209280**

Dlg3 (NM_031639) Rat Tagged ORF Clone

Product data:

Product Type:	Expression Plasmids
Product Name:	Dlg3 (NM_031639) Rat Tagged ORF Clone
Tag:	Myc-DDK
Symbol:	Dlg3
Synonyms:	Dlgh3
Mammalian Cell Selection:	Neomycin
Vector:	pCMV6-Entry (PS100001)
E. coli Selection:	Kanamycin (25 ug/mL)



[View online »](#)

ORF Nucleotide Sequence:

>RR209280 representing NM_031639
 Red=Cloning site Blue=ORF Green=Tags(s)

TTTTGTAATACGACTCACTATAGGGCGGCCGGGAATTCGTCGACTGGATCCGGTACCGAGGAGATCTGCC
 GCC**CGGATCGCC**

ATGCACAAGCACCAGCACTGCTGTAAGTGCCCGAGTGCTATGAGGTGACCCGCCTGGCCGCCCTGCGGC
 GCCTCGAGCCTCCTGGCTATGGGGACTGGCAGGTGCCGGACCCCTATGGGCCAAGTGGGGCAATGGGGC
 CAGCTCCGGTTATGGAGGCTACAGCTCGCAGACCCCTGCCTTCACAGGCAGGGGCTACCCCAACCCCTCGC
 ACCAAGGCCAAGCTCATCCACAGGCCGAGATGTGGGGCAGTGCCCCCTAAGCCAGTACCCGGCAAGA
 ACACCCCAAACTCAACGGCAGTGGCCCCAGTGGTGGCCGAGTGACCTGTACCAATCGGGACTGGTA
 TGAGCAGGCCAGCCCTGCACCCCTCTAGTGAACCCGAGGCTCTGGAGCCAGCCTATCGGTGAATGGC
 AGTGATGGCATGTTCAAGTATGAGGAGATAGTCTGGAGCGGGGCAACTCTGGCCTGGGCTTCAGTATCG
 CAGGTGGCATCGACAACCCTCATGTCCCTGATGACCCTGGCATCTTTATTACCAAGATCATTCTGGTGG
 AGCAGCTGCCATGGATGGGAGGCTGGGGTGAATGACTGTGTGCTACGGGTGAATGAGGTGGACGTGCC
 GAGGTGGTGCACAGCCGGCCGTGGAGGCACTGAAGGAGGCAGGCCCTGTGGTGGGTTGGTGGTCCGGA
 GGCGACAGCCCCACCTGAGACTATCATGGAGGTCAACCTGCTCAAGGGCCAAAAGGCCTGGGTTTCAG
 CATTGCTGGGGCATTGGTAACCAAGCACATCCCAGGAGACAACAGCATCTATACCAAGATCATTGAA
 GGAGGAGCTGCTCAGAAAGATGGACGCCTACAGATTGGGGACCGCTTCTTGGGTGAACAACCAATC
 TGCAGGATGTGAGGCATGAGGAAGCTGTGGCCTCACTCAAGAACACATCAGACATGGTCTATCTGAAGGT
 GGCCAAGCCAGGCAGTCTCCACCTCAACGACATGTATGCTCCCCCGACTATGCCAGCACTTCTACTGCC
 TTGGCTGACAATCATATAAGCCATAATTCAGCCTGGGTATCTTGGGGCAGTGGAGACAAGGTCACT
 ACCCTGCTCCTCCTCAGGTGCCCCCTACTGTTACTCTCCATTCCAGACACATGCTGGCTGAGGAAGA
 CTTTACCAGAGAGCCCCGCAAGATCATCCTGCACAAAGGTTCTACAGGCCCTGGGCTTCAACATTGTAGGA
 GGAGAGGATGGAGAGGGCATTGTTGTTTATTCTCTGGCAGGAGGCCAGCAGACCTAAGTGGGGAGT
 TGCGAAGGGGAGACCGGATCTTATCGGTAATGGAGTCAACCTGAGGAATGCTACCCATGAGCAGGCAGC
 GGCTGCTCTAAAACGGGCTGGCCAATCAGTCACCATTGTGGCCAGTATAGACCTGAAGAGTACAGTCGC
 TTTGAATCCAAGATCCATGACTTGCAGAAACAAATGATGAACAGCAGCATGAGCTCGGGTCCGGGTCTC
 TCCGAACCAGTGAGAAGAGTCTTGTATGTCAGGGCCCTGTTTGATTATGATCGGACTCGTGACAGCTG
 CCTACCAAGCCAGGACTCAGTTTCTTATGGTGACATTCTACACGTCATTAACGCCTCTGATGATGAG
 TGGTGGCAAGCAAGGCTGGTACTCCACATGGAGAGAGTGAACAGATTGGTGTGATCCCTAGTAAAAGA
 GGGTTGAAAAGAAAGAGCGAGCTCGATTGAAAACGTGAAATTCATGCCAGGACAGGGATGATTGAGTC
 TAATCGGGACTTCCCTGGGTTAAGTGACGATTATTATGGAGCAAAGAACCTGAAGGGAGTGACATCCAAC
 ACCAGTGACAGCGAAAGCAGTTCCAAAGGACAAGAGGATGCTATTTTGTGATATGAGCCAGTGACACGAC
 AAGAAATTCATTATGCCAGGCCTGTGATCATCTTGGGCCAATGAAGGACCGAGTCAATGATGACCTCAT
 CTCTGAGTTCCTGCATAAGTTTGGATCCTGCGTGCCACATACCACCCGACCTCGGCGTGATAACGAGGTA
 GATGGACAGGATTACCACTTTGTGGTTCCCGGGAACAGATGGAGAAGGATATTCAGGACAACAAGTTCA
 TCGAGGCAGGCCAGTTCAATGATAATCTCTACGGGACCAGCATCCAGTCTGTGCGGGCGGTTGCAGAGAG
 GGGCAAGCACTGCATCTTAGACGTGTCGGCAACGCTATAAAGAGACTGCAGCAAGCAACTTTATCCC
 ATTGCCATTTTCATCAAGCCCAAGTCCATCGAAGCACTTATGAAATGAACCGACGGCAGACATACGAAC
 AAGCAAATAAGATCTTTGACAAAGCCATGAAACTGGAGCAAGAATTTGGAGAATACTTTACAGCCATTGT
 ACAGGGTGACTCACTGGAAGAGATTTATAACAAAATCAAACAAATCATTGAGGACCAGTCTGGGCACTAC
 ATTTGGGTCCTATCCCCTGAAAACTC

ACGCGTACGCGGCCGCTCGAGCAGAACTCATCTCAGAAGAGGATCTGGCAGCAATGATATCCTGGATT
 ACAAGGATGACGACGATAAGGTTTAA

Protein Sequence: >RR209280 representing NM_031639
 Red=Cloning site Green=Tags(s)

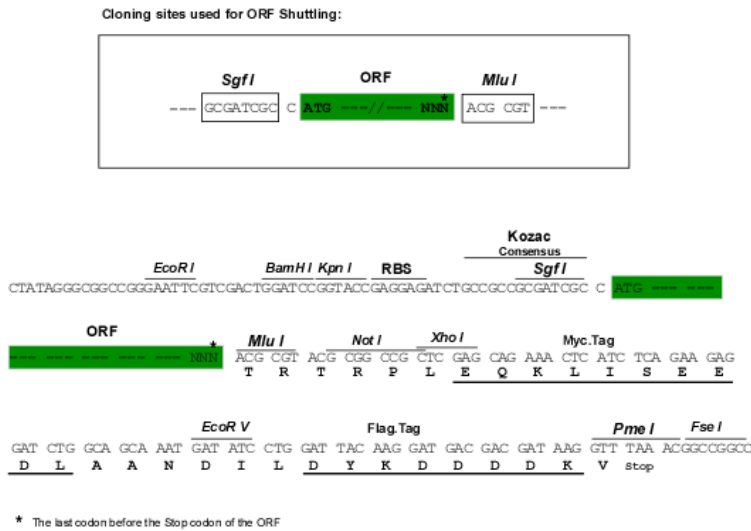
MHKHQHCCKCEPEYVTRLAALRRLEPPGYGDWQVDPDPYGPSGGNGASSGYGGYSSQTLPSQAGATPTPR
 TKAKLIPTGRDVGPPPKPVPGKNTPKLNGSGPSWWPECTCTNRDWEQASAPLLVNPEALEPSLSVNG
 SDGMFKYEEIVLERGNSLGFSAAGIDNPHVPDDPGIFITKIIPGAAAMDGRLGVNDCVLRVNEVDVS
 EVVHSRAVEALKEAGPVVRLVRRRQPPPETIMEVNLLKGPKGLGFSAAGGIGNQHIPGDNSIYITKIE
 GGAAQKDGRLQIGDRLLAVNNTNLQDVRHEEAVASLKNTSDMVYLKVAKPGSLHLNDMYAPPDYASTFTA
 LADNHISHNSSLGYLGAVESKVTPAPPQVPTRYSPIPRHMLAEEDFTREPRKIILHKGSTGLGFNIVG
 GEDGEGIFVSFILAGGPADLSEGLRRGDRILSVNGVNLRNATHEQAAAALKRAGQSVTIVAQYRPEEYSR
 FESKIIDLREQMNSMSSGSLRTSEKRSLYVRALFDYDRTRDSCLP SQGLSF SYGDI LHVINASDDE
 WWQARLVTPHGESEQIGVIPS KKRVEKKERARLKT VKFHARTGMIESNRDFPGLSDDYYGAKNLKGVTSN
 TSDSESSKQEDAILS YEPVTRQEIHYARV IILGPMKDRVNDL ISEFP HKFGSCVPHTTRPRR DNEV
 DGQDYHFVVSREQMEKDIQDNK IEAGQFNDNL YGTSIQSVRAVAERGKHCILDVSGNAIKRLQQAQLYP
 IAIFIKPKSIEALMEMNRRQTYEQANKIFDKAMKLEQEFGEYFTAIVQGDSLEEIYNKIKQIIEDQSGHY
 IWVPSPEKL

TRTRPLEQKLISEEDLAANDILDYKDDDDKV

Restriction Sites:

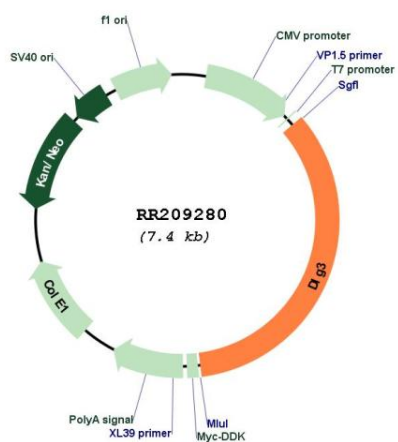
SgfI-MluI

Cloning Scheme:



ACCN:	NM_031639
ORF Size:	2547 bp
OTI Disclaimer:	The molecular sequence of this clone aligns with the gene accession number as a point of reference only. However, individual transcript sequences of the same gene can differ through naturally occurring variations (e.g. polymorphisms), each with its own valid existence. This clone is substantially in agreement with the reference, but a complete review of all prevailing variants is recommended prior to use. More info
OTI Annotation:	This clone was engineered to express the complete ORF with an expression tag. Expression varies depending on the nature of the gene.
Components:	The ORF clone is ion-exchange column purified and shipped in a 2D barcoded Matrix tube containing 10ug of transfection-ready, dried plasmid DNA (reconstitute with 100 ul of water).
Reconstitution Method:	<ol style="list-style-type: none">1. Centrifuge at 5,000xg for 5min.2. Carefully open the tube and add 100ul of sterile water to dissolve the DNA.3. Close the tube and incubate for 10 minutes at room temperature.4. Briefly vortex the tube and then do a quick spin (less than 5000xg) to concentrate the liquid at the bottom.5. Store the suspended plasmid at -20°C. The DNA is stable for at least one year from date of shipping when stored at -20°C.
RefSeq:	NM_031639.1 , NP_113827.1
RefSeq Size:	3736 bp
RefSeq ORF:	2550 bp
Locus ID:	58948
UniProt ID:	Q62936
Cytogenetics:	Xq22
MW:	93.5 kDa
Gene Summary:	human homolog is a protein with guanylate kinase activity; involved in synaptogenesis and cell proliferation [RGD, Feb 2006]

Product images:



Circular map for RR209280