

Product datasheet for **RR209270**

Tnik (NM_001106422) Rat Tagged ORF Clone

Product data:

Product Type: Expression Plasmids
Product Name: Tnik (NM_001106422) Rat Tagged ORF Clone
Tag: Myc-DDK
Symbol: Tnik
Synonyms: RGD1561817
Vector: pCMV6-Entry (PS100001)
E. coli Selection: Kanamycin (25 ug/mL)
Cell Selection: Neomycin
ORF Nucleotide Sequence: >RR209270 representing NM_001106422
Red=Cloning site Blue=ORF Green=Tags(s)

TTTTGTAATACGACTCACTATAGGGCGCCGGAATTCGTCGACTGGATCCGGTACCGAGGAGATCTGCC
GCCGGATCGCC

ATGGCGAGCGACTCCCCAGCTCGCAGCCTGGATGAAATCGATCTCTCCGCCCTGAGGGACCCTGCAGGGA
TCTTTGAGTTGGTGAACCTGTGCGAAATGGTACATATGGCCAAGTTTATAAGGGTCGTCATGTCAAAC
AGGCCAGCTTGTGCCATTAAGTTATGGACGTCACAGGGGATGAAGAGGAAGAAATCAAACAAGAAATT
AACATGTTGAAGAAATTTCTCATCACAGGAACATTGCTACATACTACGGTGCTTTTATCAAAAAGAACC
CTCCGGGCATGGATGACCAACTATGGTTGGTTATGGAGTTCTGTGGTGGCTCTGTCACCTGACCTGAT
CAAGAACACGAAAGGCAACACATTGAAAGAGGAGTGGATTGCATACATCTGCAGGGAGATCTTACGGGGC
CTGAGTCACCTGCACCAGCACAAAGTATTTCATCGGGATATTAAGGACAGAATGTCTTGCTGACTGAAA
ATGCAGAAGTTAAGCTAGTGGATTTTGGCGTGAGTGCCAGCTTGACCGAACAGTGGGCAGGAGGAACAC
GTTTCATCGGGACCCCTACTGGATGGCACCAGGAGTATTGCCTGTGATGAGAACCAGATGCCACGTAT
GATTTCAAGAGTGACTTGTGGTCTTTGGGAATCACCGCATTGAGATGGCAGAAGGTGCCCCCCCTCT
GTGATATGCATCCATGAGAGCGCTTTCCTCATCCACGGAACCCCGCACCTCGCCTCAAGTCTAAGAA
GTGGTCAAAAAAATCCAGTCATTTATCGAGAGCTGCTTGGTAAAGAATCACGGCCAGCGCCAGCCACA
GAACAGTTGATGAAGCACCCATTATACAGAGACCAGCCTAATGAGAGGCAGGTCCGCATCCAGCTGAAGG
ACCACATTGATCGAACAAAGAAGAAGCGAGGAGAAAAAGATGAGACTGAGTATGAATACAGTGAAGTGA
GGAAGAAGAGGAAGAGAACGACTCTGGGAACCCAGCTCCATTCTGAACCTACCAGGAGAGTCAACACTG
CGACGGGACTTCTGAGACTGCAGCTGGCAACAAGGAGCGCTCAGAGGCCCTGCGGCGCAACAGCTGG
AGCAGCAGCAGAGGGAGAATGAAGAACATAAGAGGCGACTACTGGCTGAGCGCCAGAAGCGCATCGAGGA
GCAGAAGGAGCAGAGGCGGAGGCTGGAGGAGCAACAAGGCGAGAAAAGGAGCTTCGGAAGCAGCAGGAG
CGGAACAGCGCCGGCACTATGAGGAGCAGATGCGCCGGAGGAGGAGAGGAGGCGCAGAACACGAAC
AGGAGTACATCAGGCGACAGCTAGAAGAAGAGCAAAGGCAGTTAGAAATCTTACAGCAGCAGCTACTGCA
TGAGCAAGCTCTACTTCTGGAATATAAGCGCAAACAACCTGGAAGAACAGAGACAAGCAGAAAAGACTGCAG
CGGCAGCTAAAGCAAGAGCGGGACTATCTGGTTTCCCTCCAGCACCAGCGGCAGGAGCAGAGGCCCTGG



AGAAGAAGCCATTGTACCATTACAAGGAGGGCATGAGTCCTAGTGAGAAGCCTGCCTGGGCCAAGGAGGT
GGAAGAACGCTCAAGACTCAACCGACAGAGTTCACCTGCCATGCCTCACAAGGTTGCCAACAGGATCTCA
GACCCCAACCTACCCCAAGATCAGAGTCTTCAGCATTAGTGGGGTTCAGCCTGCTCGGACACCCCAA
TGCTCAGACCTGTTGATCCCCAGATCCCGCAGCTGGTAGCCGTCAAATCCCAGGGACCTGCCTTGACCGC
CTCCCAGTCAGTGCATGAGCAACCCACAAAAGGCTGTCTGGGTCCAGGAGGCTCTGAATGTGACCTCT
CACCGGTCGAGATGCCACGCCAGAACTCGGATCCCACCTCGGAAAACCCCTCTCTCCCACGCGCATTG
AGAAGTTTGACCGAAGCTCTTGGTTACGACAGGAAGAAGACATTCCACCAAAGGTGCCTCAAAGAACAAC
TTCTATATCCCCAGCACTAGCCAGAAAGAATTCCCTGGGAATGGCAGTGCCTTAGGCCCAAGACTCGGA
TCTCAGCCTATCAGAGCAAGCAACCCTGATCTCCGCAGGACAGAGCCAGTCTGGAGAGCTCCTTGACGC
GGACCAGCAGTGGCAGTCTTCCAGCTCCAGCACTCCCAGCTCCCAGCCAGCTCTCAAGGAGGCTCTCA
GCCTGGGTCAACAAGCAGGATCTAGTGAACGAACAGAGTTCGGGCCAACAGTAAGTCAGAAGGATCGCCC
GTGCTCCCCATGAGCCTTCCAAGGTGAAACCAGAAGAATCCAGAGACATCCCACGGCCAGCCGGCCAG
CTGATCTGACGGCTTAGCCAAAGAATTAAGAGAACTCCGGATTGAAGAAAACAAACCGCCACTGAAGAA
AGTGACTGATTACTTCTCCAGCGAGGAGTCAGAGAGCAGTGAGGAAGAAGAGGAGGATGGAGAGAGT
GAGACGCACGATGGGACAGTGGCTGTGAGTACATACCCAGACTAATACCCACGGGTGCTCCAGGGAAGA
ATGAGCAGTACAACATGGGGATGGTCGGCACACATGGGCTGGAGACTTCGCATGCAGATACCTTTGGCGG
CAGCATTTCAAGAGAAGGAACCTTGATGATCAGAGAGACGGCTGAAGAGAAGAAGCGATCTGGCCACAGT
GACAGTAATGGCTTCGCAGGTACATCAATCTCCAGACCTTGTGACAGCAGAGCCATTGCCAGCTGGGA
CTCCCAGTGAAGGCTGGGCCGTGTCTCCACTCATTCCCAGGAGATGGACTGGAGCTGAATATGGTAT
GGGAAGCAGCACAAAGCCTCCTCACCCCTTCGTGGACCCTAGAGTGTACCAGACATCGCCACTGAT
GAAGATGAAGAGGATGATGAGTCTCGGCTGTGCCCTGTTTACTAGCGAACTTCTTAGGCAAGAACAGG
CCAAACTCAATGAAGCGAGGAAGATTCAGTGGTAAATGTGAACCAACGAACATTGCCCCTCACAGTGA
CACACCGGAAATCAGAAAATACAAGAAACGATTCATTCAGAAATACTCTGTGACGCTGTGTGGGTGTG
AACCTTCTGGTGGGACTGAAAATGGCCTGATGCTTTTGGACAGAAGCGGCCAAGGCAAAGTCTACAACC
TCATCAACCGGAGGCGATTTTCAGCAGATGGACGTGCTAGAAGGACTAAACGTTCTTGTACAGATACAGG
AAAGAAGAATAAGCTCCGGGTGACTATCTCTCGTGGTTAAGAAACAGAATCCTGCACAATGACCCAGAA
GTAGAAAAGAAGCAGGTTGGATCACCGTCGGAGACTTGGAAAGGCTGTATCCATTACAAAGTTGTTAAAT
ATGAAAGGATCAAGTCTTGGTATTGCCTTAAAGAATGCAGTAGAGATATACGCATGGGCGCCTAAACC
TTATCATAAGTTCATGGCATTAAAGTCTTTTGCAGATCTTCAGCATAAGCCTCTGCTCGTTGACCTCACA
GTAGAAGAAGTCAAAGGTTAAAGTCAATTTTGGCTCACACACTGGTTCCATGTAATTGATGTTGACT
CTGGAACTCCTACGATATCTATATACCATCCCATATTCAGGTAATATCACTCCTCACGCTATCGTCAT
CTTGCCTAAAACAGACGGAATGGAGATGCTTGTCTGCTATGAGGATGAGGGGGTGTATGTGAACACCTAT
GGCCGGATCACTAAGGATGTGGTCTCCATGGGAGAAAATGCCACATCTGTGGCTACATTCATTCCA
ATCAGATAATGGGCTGGGGCGAGAAAGCTATTGAGATCCGGTCAGTGGAACAGGACATTTGGATGGAGT
GTTTATGCATAAACGAGCTCAAAGGTTAAAGTTCTATGTGAAAGAAATGATAAGGTAATCCGTTTCAA
CTTTGCTTTAGTGTTCATTTAAGAGACCACAGGTACCTGTGAAACCTTCATTTTCTTTATACTGA
CT

ACGCGTACGCGGCCGCTCGAGCAGAACTCATCTCAGAAGAGGATCTGGCAGCAAATGATATCCTGGATT
ACAAGGATGACGACGATAAGGTTTAA

Protein Sequence: >RR209270 representing NM_001106422
 Red=Cloning site Green=Tags(s)

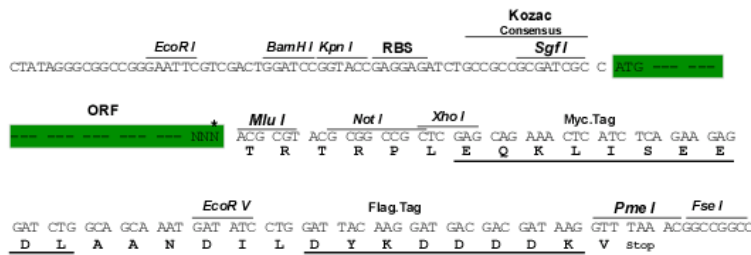
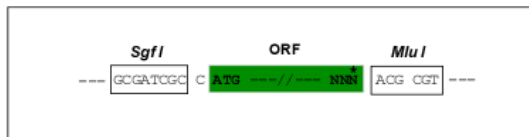
MASDSPARSLDEIDL SALRDPAGIFELVELVGNNGTYGQVYKGRHVKTGQLAAIKVMDVTGDDEEEEIKQEI
 NMLKKYSHHRNIATYYGAFIKKNPPGMDDQLWL VMEFCGAGSVTDLIKNTKGNTLKEEWIAYICREILRG
 LSHLHQHKVIHRDIKQNVLL TENAEVKLVDFGVSAQLDRTVGRNRTF IGTPYWMAPEVIACDENPDATY
 DFKSDLWSLGITAIEMAEGAPPLCDMHPMRALFLIPRNPAPRLKSKKWSKKFQSFIESCLVKNHGQRPAT
 EQLMKHPFIRDQPNRQVRIQLKDHIDRTKKRGEKDETEYEYSGSEEEEEENDSGEPSSILNLPGESTL
 RRDFLRQLANKERSEALRRQLEEQQRENEEHKRQLLAERQKRIEEEQKEQRRRLEEQRREKELRKQQE
 REQRRHYEEQMRREEERRRAEHEQEYIRRQLEEEQRQLEILQQQLLHEQALLLEYKRQLEEQRQAERLQ
 RQLKQERDYL VSLQHQRQEQRPLEKKPL YHYKEGMPSEKPAWAKEVEERSRLNRQSSPAMPHKVANRIS
 DPNLPPRSEFSISGVQPARTPPMLRPVDPQIPQLVAVKSQGPAL TASQSVHEQPTKGLSGFQEALNVT
 HRVEMPRQNSDPTSENPLPTRIEKFDRSSWLRQEEDIPPKVPQRTTSSIPALARKNSPONGSALGPRLG
 SQPIRASNPDLRRTEPVLSSLQRTSSGSSSSSTPSSQPSQGGSQPGSQAGSSERTRVRANSKSEGPS
 VLPHEPSKVKPEESRDIPRPSRPADLTALAKELRELRIEETNRPLKKVTDYSSSSESESESEEEEEEDGES
 ETHDGTVAVSDIPRLIPTGAPGKNEQYNMGMVGTGHELETSHADTFGGSI SREGTLMIRETAEKKRSGHS
 DSNGFAGHINLPDLVQQSHSPAGTPTEGLGRVSTHSQEMDTGAEYMGSSSTKASF TPFVDPVRYQTSPTD
 EDEEDDESSAAALFTSELLRQEQAQLNEARKISVYVNVNPTNIRPHSDTPEIRKYKRFNSEILCAALWGV
 NLLVGTENGLMLLDRSGQKQVYVNL INRRRFQQMDVLEGLNVLVTISGKKNLKVYVYLSWLRNRIHNDPE
 VEKKQGWITVGDLEGC IHYKVVYERIKFLVIALKNAVEIYAWAPKPYHKFMAFKSFADLQHKPLLVDLT
 VEEGQRLKVI FGSHTGFHVIVDVSNGSYDIYIPSHIQGNITPHAIIVILPKTDGMEMLVCYEDEGVYVNTY
 GRITKDVVLQWGEEMPTSVAYIHSNQIMGWGEKAIEIRSVETGHLDGVMFHKRAQRLKFLCERNDKVNPFQ
 LCF SVCILRDHQVPVKPFSFILT

TRTRPLEQKLISEEDLAANDILDYKDDDDKV

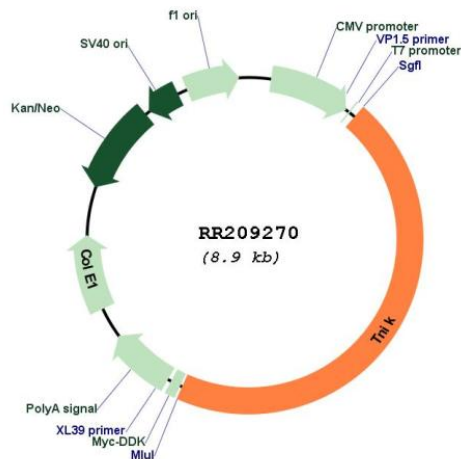
Restriction Sites:
 Cloning Scheme:

Sgfl-MluI

Cloning sites used for ORF Shuttling:



* The last codon before the Stop codon of the ORF

Plasmid Map:


ACCN: NM_001106422

ORF Size: 4062 bp

OTI Disclaimer: The molecular sequence of this clone aligns with the gene accession number as a point of reference only. However, individual transcript sequences of the same gene can differ through naturally occurring variations (e.g. polymorphisms), each with its own valid existence. This clone is substantially in agreement with the reference, but a complete review of all prevailing variants is recommended prior to use. [More info](#)

OTI Annotation: This clone was engineered to express the complete ORF with an expression tag. Expression varies depending on the nature of the gene.

Components: The ORF clone is ion-exchange column purified and shipped in a 2D barcoded Matrix tube containing 10ug of transfection-ready, dried plasmid DNA (reconstitute with 100 ul of water).

Reconstitution Method:

1. Centrifuge at 5,000xg for 5min.
2. Carefully open the tube and add 100ul of sterile water to dissolve the DNA.
3. Close the tube and incubate for 10 minutes at room temperature.
4. Briefly vortex the tube and then do a quick spin (less than 5000xg) to concentrate the liquid at the bottom.
5. Store the suspended plasmid at -20°C. The DNA is stable for at least one year from date of shipping when stored at -20°C.

RefSeq: [NM_001106422.1](#), [NP_001099892.1](#)

RefSeq Size: 4523 bp

RefSeq ORF: 4065 bp

Locus ID: 294917

Cytogenetics: 2q24

MW: 154.3 kDa