

Product datasheet for **RR209266**

Mapk6 (NM_031622) Rat Tagged ORF Clone

Product data:

Product Type:	Expression Plasmids
Product Name:	Mapk6 (NM_031622) Rat Tagged ORF Clone
Tag:	Myc-DDK
Symbol:	Mapk6
Synonyms:	ERK3
Vector:	pCMV6-Entry (PS100001)
E. coli Selection:	Kanamycin (25 ug/mL)
Cell Selection:	Neomycin



[View online »](#)

ORF Nucleotide Sequence:

>RR209266 representing NM_031622
 Red=Cloning site Blue=ORF Green=Tags(s)

TTTTGTAATACGACTCACTATAGGGCGGCCGGAATTCGTCGACTGGATCCGGTACCGAGGAGATCTGCC
 GCC**CGCATCGCC**

ATGGCAGAGAAATTTGAAAGTCTCATGAACATTATGGCTTTGATCTGGTTCCAGGTACATGGACTTAA
 AACCATTTGGGCTGTGGAGGCAATGGCTTGGTTTTTCTGCTGTAGACAATGACTGTGACAAAAGAGTAGC
 CATCAAGAAAATTGTCCTCACCGATCCCCAGAGTGTCAAACATGCCCTCCGTGAAATCAAAATTATTAGA
 AGACTTGACCACGATAACATTGTGAAAGTGTGAAATTTCTGGTCCCAGTGGAAGCCAGCTGACAGACG
 ATGTGGGCTCTAACAGAGCTGAATAGCGTCTACATTGTTCCAGGAGTACATGGAGACAGACTTGGCGAA
 CGTGCTGGAGCAGGGCCCTTTACTGGAGGAGCATGCCAGGCTCTCATGTACCAGCTGCTGCGTGGGCTC
 AAGTACATCCACTCTGCAAACGTGCTGCACAGGGATCTCAAGCCGGCCAACTTTTCATTAACACTGAAG
 ACTTGGTGTGAAGATTGGTGACTTTGGCTGGCCGGATCATGGATCCTCATTATCCCATAAGGGTCA
 TCTTTCTGAAGGATTGGTTACCAAATGGTACAGATCTCCACGGCTTTACTTTCTCCTAATAACTATACT
 AAAGCCATTGACATGTGGGCTGCAGGCTGCATCTTTGCTGAAATGCTGACTGGTAAAACCTCTTTGCGAG
 GTGCACATGAACCTGAACAGATGCAGCTGATCTTGGAGTCTATCCCTGTTGTGCACGAGGAAGATCGGCA
 GGAGCTTCTCAGCGTGATTCCAGTTTACATTAGAAAACGACATGACTGAGCCACACAAAACCTGACTCAG
 CTGCTTCCGGGATAGTCGGGAAGCACTGGATTTCTGGAACAGATTCTGACGTTCCAGTCCCATGGACC
 GGCTGACAGCCGAGGAAGCACTTTCCATCCTTACATGAGCATCTACTCTTTCCCAACGGACGAGCCTAT
 TTCCAGCCATCCTTTCCACATAGAAGACGAAGTGGACGACATTTTGCTAATGGATGAAACACACAGTCAC
 ATTTATAACTGGGAAAGTACCACGATTGTGAGTCTCGGAGCATGACTGGCCTATTGATAACAACCTTTG
 TCCTCGAAAGTACTTGGATGGAGACCCGAGAGAAGTATCTGGAGGATCCCGCCTTCGACACCAGCTACTCT
 GCTGAGCCTGCTGGCAGTACCCAGATCACACGAGAACAAGTACTGTGATCTGGAGTGTAGCCACACCT
 GTAACACAAAACAAGTTCGCCATCATACTTAGATAAACCTGGTGTGGAGGGAGAGCGAGGTTAACCATTA
 CTATGAGCCCAAGCTTATTATAGATCTTTCCAACCTGGAAGAGCAAAGTAAAGACAAATCCGACAAGAGA
 GGCAAGTCCAAGTGTGAGAGGAACGGTTGGTCAAGGCGCAGATTGCGCTTGAGGAAGCGTCCCAGCAGC
 TGGCTGAGAGGGAGAGGGCCAAGGCTTTGACTTTGATGCCTTCATCGCAGGCACCGTTCAGCTCAGTGC
 CCAGCGTGAGTCTGCTGACGTAGTTGACAAGTTAAACGACTTGAATAGCTCAGTGTCCAGCTAGAAATG
 AAAAGCCTGATATCCAAGTCAGTCAGCCGAGAAAAGCAAGAAAAGGAAGGGCTAACCTGGCCAGCTGG
 GAGCCTTGATACCAGCCCTCCTGGGAGAGCCAGTTTGTGAGTGGCGGGGAGGAGTGCCTTATCAGTCA
 GTTTTGTTGTGAGGTGAGGAAGGACGAACAGTGGAGAAGGAGAACAATTACACCAGCTATTTGGACAAG
 TTTTTTAGCAGGAAGGAGGATTCTGAAATGCTAGAAAAGTGGCCAGTGGAAAGGGAAGCGTGGGGAGA
 GAGGCCGTGAGGCAGGGCTTCTGAGCAGCGGTGGGGAGTTTCTCCTGAGCAGGCAGCTAGAGTCCATAGG
 CACCCCGAGTTCACAGTCCAGGGGATCCCCACTCAAGTCCATCCAGGCCACGTTAACACCTTCCGCT
 ATGAAATCTTCCCTCAAATCCCTCACAAAGACATACAGCAACATTCTGAAACATCTGAAC

ACGCGTACGCGGCCGCTCGAGCAGAACTCATCTCAGAAGAGGATCTGGCAGCAAATGATATCCTGGATT
 ACAAGGATGACGACGATAAGGTTTAA

Protein Sequence: >RR209266 representing NM_031622
 Red=Cloning site Green=Tags(s)

MAEFESLMNIHGFDLGSRYMDLPLGCGGNL VFSAVDNDCDKRVAIKKIVL TDPQSVKHALREIKIIR
 RLDHDNI VKVFEILGPSGSQLTDDVGS L TELNSVYIVQEYMETDLANVLEQGPLEEHARLFMYQLLRGL
 KYIHSANV LHRDLK PANLFINTEDLVLKIGDFGLARIMDPHYSHKGHLSEGLVTKWYRSPRLLSPNNYT
 KAIDMWAAGCIFAEMLTGKTLFAGAHELEQMQLILE SIPVVHEEDRQELLSVIPVYIRNDMTEPHKPLTQ
 LLPGISREALDFLEQILTFSPMDRLTAEALSHPYMSIYSFPTDEPISSH PFHIEDEVDILLMDETHSH
 IYNWERYHDCQFSEHDWPIHNNFDI DEVDLPRALSDVTDEEEVQVDP RKYLDGDKREKYLEDPAFDTSYS
 AEPWCQYPDH HENKYCDLECSHTCNYKTRSPSYLDNLVWRESEVNHYEPKLIIDL SNWKEQSKDKSDKR
 GKSKCERNGLVKAQIALEEASQQLAERERGGQDFDAFIAGTVQLSAQRESADVVDKLN DLNSSVSQLEM
 KSLISKSVSREKQEKGRANLAQLGALYQPSWESQFVSGGEE CFLISQFCCEVRKDEHVEKENTYTSYLDK
 FFSRKEDSEMLET E PVEEGKRGERGREAGLLSSGGEFLLSRQLESIGTPQFHSPGGSP LKSIQATLTPSA
 MKSSPQIPHKTYSNILKHLN

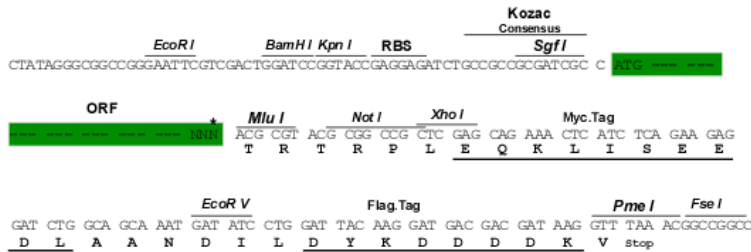
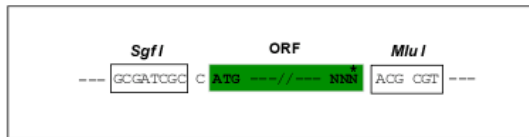
TRTRPLEQKLI SEEDLAANDILDYKDDDDKV

Restriction Sites:

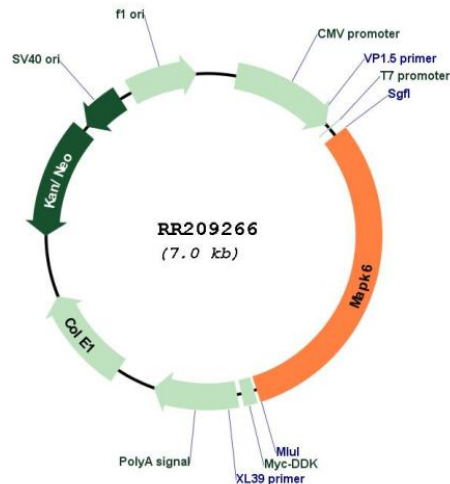
Sgfl-MluI

Cloning Scheme:

Cloning sites used for ORF Shuttling:



* The last codon before the Stop codon of the ORF

Plasmid Map:


ACCN: NM_031622

ORF Size: 2160 bp

OTI Disclaimer: The molecular sequence of this clone aligns with the gene accession number as a point of reference only. However, individual transcript sequences of the same gene can differ through naturally occurring variations (e.g. polymorphisms), each with its own valid existence. This clone is substantially in agreement with the reference, but a complete review of all prevailing variants is recommended prior to use. [More info](#)

OTI Annotation: This clone was engineered to express the complete ORF with an expression tag. Expression varies depending on the nature of the gene.

Components: The ORF clone is ion-exchange column purified and shipped in a 2D barcoded Matrix tube containing 10ug of transfection-ready, dried plasmid DNA (reconstitute with 100 ul of water).

Reconstitution Method:

1. Centrifuge at 5,000xg for 5min.
2. Carefully open the tube and add 100ul of sterile water to dissolve the DNA.
3. Close the tube and incubate for 10 minutes at room temperature.
4. Briefly vortex the tube and then do a quick spin (less than 5000xg) to concentrate the liquid at the bottom.
5. Store the suspended plasmid at -20°C. The DNA is stable for at least one year from date of shipping when stored at -20°C.

RefSeq: [NM_031622.2](#), [NP_113810.2](#)

RefSeq Size: 4194 bp

RefSeq ORF: 2163 bp

Locus ID: 58840
UniProt ID: [P27704](#)
Cytogenetics: 8q24
MW: 82.3 kDa
Gene Summary: kinase that is activated following insulin and Ngf treatment [RGD, Feb 2006]