

## Product datasheet for **RR209220**

### Rnd2 (NM\_001010953) Rat Tagged ORF Clone

#### Product data:

Product Type: Expression Plasmids  
 Product Name: Rnd2 (NM\_001010953) Rat Tagged ORF Clone  
 Tag: Myc-DDK  
 Symbol: Rnd2  
 Synonyms: Arhn; RhoN; Rohn  
 Vector: pCMV6-Entry (PS100001)  
 E. coli Selection: Kanamycin (25 ug/mL)  
 Cell Selection: Neomycin  
 ORF Nucleotide Sequence: >RR209220 representing NM\_001010953  
 Red=Cloning site Blue=ORF Green=Tags(s)

TTTTGTAATACGACTCACTATAGGGCGCCGGAATTCGTCGACTGGATCCGGTACCGAGGAGATCTGCC  
 GCC**CGATCGCC**

ATGGAGGGGCAGAGTGGCCGCTGCAAGATCGTAGTGGTGGGGACGCGGAGTGCGGCAAGACAGCGCTGC  
 TGCAGGTGTTCCGAAGGACGCCTACCCGGGAGTTATGTCCCCACAGTGTGGAGAAGTACACTGCCAG  
 CTCGAGATCGACAAGCGCCGATTGAGCTCAACATGTGGGATACTTCAGGTTCCCTTACTATGACAAT  
 GTCCGGCCTCTGGCTACCCAGATTCTGATGCTGTGCTCATCTGCTTTGACATTAGCCGGCCAGAAACAC  
 TGGACAGTGTCTCAAGAAGTGGCAAGGAGAGACTCAGGAGTTTTGCCCAATGCCAAGGTGGTGTGCTGGT  
 TGGCTGTAAGCTGGACATGCGGACTGACCTGGCCACCCTGAGGGAGCTATCCAAGCAGAGACTTATCCCC  
 GTCACACACGAGCAGGACTGTGCTGGCCAAGCAGGTGGGAGCTGTGTCTACGTTGAATGCTCCTCCC  
 GGTCTCCGAGCGCAGTGTGAGGACGCTTCCATGTGGCCACAGTGGCTTCTCTGGCCGTGGTGGCCA  
 TAGGCAGCTGCGCCGACTGACTCTCGCCGAGGACTGCAGCGATCCACTCAACTGCCTGGACGGCCAGAC  
 AGAGGAAATGAGGGCGAGATACATAAAGATCGAGCCAAGAGCTGTAACCTCATG

**ACGCGT**ACGCGGCCGCTCGAGCAGAAACTCATCTCAGAAGAGGATCTGGCAGCAAATGATATCCTGGATT  
 ACAAGGATGACGACGATAAGGTTTAA



[View online »](#)

**Protein Sequence:** >RR209220 representing NM\_001010953  
Red=Cloning site Green=Tags(s)

MEGQSGRCKIVVVGDAECGKTALLQVFAKDAYPGSYVPTVFENYASFEIDKRRIELNMWDTSGSSYYDN  
 VRPLAYPDSDAVLICFDISRPE TLDSVLKKWQGETQEF C PNAKVVL VGCKLDMRTLATLREL SKQRLIP  
 VTHEQGTVLAKQVGAVSYVECCSSRSERSVRDVFHVATVASLGRGGHRQLRRTDSRRGLQRSTQLPGRP  
 RGNEGEIHKDRAKSCNLM

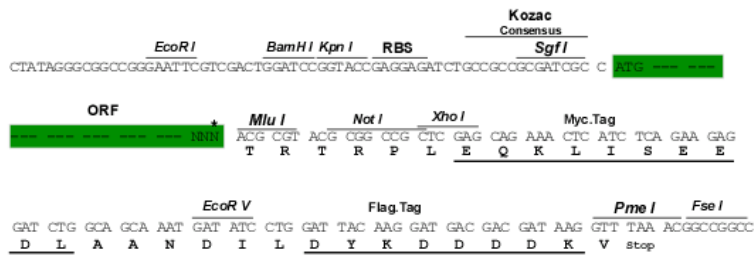
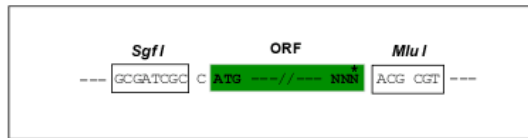
TRTRPLEQKLISEEDLAANDILDYKDDDDKV

**Restriction Sites:**

Sgfl-MluI

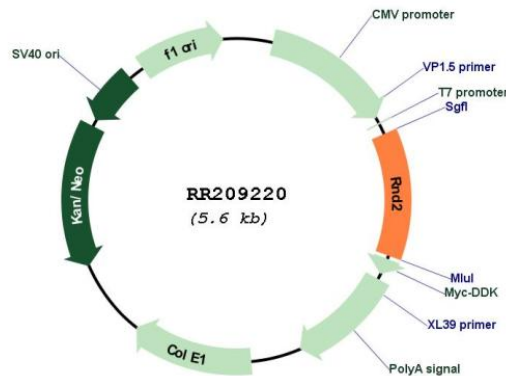
**Cloning Scheme:**

Cloning sites used for ORF Shuttling:



\* The last codon before the Stop codon of the ORF

**Plasmid Map:**



**ACCN:** NM\_001010953

**ORF Size:** 684 bp

<b>OTI Disclaimer:</b>	The molecular sequence of this clone aligns with the gene accession number as a point of reference only. However, individual transcript sequences of the same gene can differ through naturally occurring variations (e.g. polymorphisms), each with its own valid existence. This clone is substantially in agreement with the reference, but a complete review of all prevailing variants is recommended prior to use. <a href="#">More info</a>
<b>OTI Annotation:</b>	This clone was engineered to express the complete ORF with an expression tag. Expression varies depending on the nature of the gene.
<b>Components:</b>	The ORF clone is ion-exchange column purified and shipped in a 2D barcoded Matrix tube containing 10ug of transfection-ready, dried plasmid DNA (reconstitute with 100 ul of water).
<b>Reconstitution Method:</b>	<ol style="list-style-type: none"><li>1. Centrifuge at 5,000xg for 5min.</li><li>2. Carefully open the tube and add 100ul of sterile water to dissolve the DNA.</li><li>3. Close the tube and incubate for 10 minutes at room temperature.</li><li>4. Briefly vortex the tube and then do a quick spin (less than 5000xg) to concentrate the liquid at the bottom.</li><li>5. Store the suspended plasmid at -20°C. The DNA is stable for at least one year from date of shipping when stored at -20°C.</li></ol>
<b>RefSeq:</b>	<a href="#">NM_001010953.1</a> , <a href="#">NP_001010953.1</a>
<b>RefSeq Size:</b>	1387 bp
<b>RefSeq ORF:</b>	687 bp
<b>Locus ID:</b>	303553
<b>Cytogenetics:</b>	10q31
<b>MW:</b>	25.4 kDa