

## Product datasheet for **RR209211**

### **Acsm1 (NM\_001108502) Rat Tagged ORF Clone**

#### **Product data:**

Product Type:	Expression Plasmids
Product Name:	Acsm1 (NM_001108502) Rat Tagged ORF Clone
Tag:	Myc-DDK
Symbol:	Acsm1
Synonyms:	Bucs1
Vector:	pCMV6-Entry (PS100001)
E. coli Selection:	Kanamycin (25 ug/mL)
Cell Selection:	Neomycin



[View online »](#)

**ORF Nucleotide Sequence:**

>RR209211 representing NM\_001108502  
 Red=Cloning site Blue=ORF Green=Tags(s)

TTTTGTAATACGACTCACTATAGGGCGGCCGGAATTCGTCGACTGGATCCGGTACCGAGGAGATCTGCC  
 GCC**CGGATCGCC**

ATGCAGTGGCTGAGGAGTTCTGACTCCACTGGGCATCTGCAAATCTTGCACAGATTCTCCCTACACC  
 GTCCACAGCTGCACAGATGGTTGATTTACAGAGACGGAGCTCAAAGATGGAATGACTATGATTCACCTGA  
 GGAGTTAACTTTGCAAGTCATGTCCTGGACTACTGGGCTCAAATGGAAGGGGAGGGCAAGAGAGGACCA  
 GGTCCAGCCTTATGGTGGTGAATGACCAAGGAGATGAAATAAAGTGGAGCTTCAGGGAGCTGAGGGACC  
 TCAGCCGCCGTGCTGCCAACGCTTTGAGCAGACTTGTGGCTGCAGCATGGAGATCGCCTGGCCTTGAT  
 TCTGCCTCGAGTGCCGGAGTGGTGGCTGGTGACAGTGGGCTGCATTGCAACAGGAGTCATCTTCATTCT  
 GGGACTGCCAAATGAAAGCCAAGGATATTCTCTACCGAATACAAATGTCTCAAGCCAAAGCCATTGTGA  
 CCACAGACAGCCTTGTCCAGAGGTGGAATCTGTGGCTTCTGAGTGTCTGGTCTGAAAACCAAGATAGT  
 GGTGTCTGATCACAACCATGAAGGTGGCTTAACCTCCGGACACTGCTTAGATCAGCATCCCCAGACCAT  
 ACCTGTGTTAAGTCAAAGATGAAGGACCCCATGGTCATCTTCTACCAGCGGGACCACAGGTTACCCCA  
 AGATGGCAAAGCACAACCAAGGACTTGCTTCCGGTCTTCTGTGCCTTATGCAGAAAATTTTTGAAGCT  
 GAAGACATCTGATGTCATTTGGTGCATGTCAGACCCAGGATGGATTCTGGCTACTGTGGGATGCCTGCTC  
 GAACCTGGACAGCAGGTGCTACAGTCTTCCGTTACAACCTCCCTCAGTTTGACCCCAAAGTCATTGTAG  
 AGACACTGTTCAAATACCTATCACTCAATGCCTTGTGCCCCAGCCGTGATCGAATGGTTCTTCAGAA  
 GAATATCTCCAATCTCAGGTTCCCACCCTGGAGCATTGCGCAACTGGTGGAGAGAGCCTGCTGCCTGAG  
 GAATATGAGCAGTGAAGCAAAGGACAGGCCTTCCATTCATGAGGTCTATGGACAGTCAGAAACGGGA  
 TCACCTGTGCCATCTCCGGAAATGAAGTCAAGCGAGGCTCCATAGGGAAGGCCATTTACCTTTGA  
 CATAAGATCATCGATGAGAAGGGCAACATCCTCCCGCCCAACACGGAAGGATACATTGGCATCAGGATC  
 AAGCCACCAGGCCGCTAGGCCTTCTGTGGGATATGAGAATAGCCAGAGAAGACATCTGAAGTGGAGT  
 GTGGGACTTTTACAATAGTGGGATAGAGCGACTATTGATGAAGATGGCTACATCTGGTCTTGGGGAG  
 GAGTGTGATGTCATCAATGCTTCCGGTACCGCATCGGGCTACAGAGGTGGAGAACGCCTTGGTGGAG  
 CACCCAGCGGTGTCAGAGTCTGCGGTGGTGAAGCAGCCCTGACAAGGATCGAGGAGAGGTGGTGAAGGCTT  
 TTATTGCTCTCAACCCAGAGTTCCTGTACATGATCAGGAACAGCTTATCAAAGAGCTACAGGAGCATGT  
 GAAGTCAGTGACTGCACCATAAAGTACCCAGGAAGGTGGAGTTTGTTCAGAATTGCCAAAACCATC  
 ACAGGCAAATCAAAGAAGGAAGTTCGAAATAAGGAGTTCGGTCAGATA

**ACGCGT**ACGCGGCCGCTCGAGCAGAAACTCATCTCAGAAGAGGATCTGGCAGCAAATGATATCCTGGATT  
 ACAAGGATGACGACGATAAGGTTTAA

**Protein Sequence:**

>RR209211 representing NM\_001108502  
 Red=Cloning site Green=Tags(s)

MQWLRNFLPLGICKFLHRFSLHRPQLHRWLSGDGAQRWWDYDSPEEFNFASHVLDYWAQMEGEGKRG  
 GPALWWWNDQGDEIKWSFRELRDLRRRAANVFEQTCGLQHGDRLALILPRVPEWWLVTGCI RTGVIFIP  
 GTAQMKAKDILYRIQMSQAKAIVTTDSLVEVESVASECPGLKTKIVVSDHNHEGWLNFRTLLRSASPDH  
 TCVKSKMKDPMVIFFTSGTTGYPKMAKHQGLAFRSSVPSCRKFLKLTSDVIWCMSPDGPWILATVGC  
 EPWTAGATVVFVHNLQFDPKIVIVETLFKYPITQCLAAPAVYRMVLQKNISNLRFPPTLEHCATGGESLLPE  
 EYEQWKQRTGLSIEHVEYQSETGITCAIFREMKVKGSIKAILPFDIQIIDEKGNILPPNTEGYIGIRI  
 KPTRPLGLFVGYENSPEKTSEVECGDFYNSGDRATIDEDGYIWFGRSDDVINASGYRIGPTEVENALVE  
 HPAVSESAVVSSPKDRGEVVKAFIVLNPEFLSHDQEQLIKELQEHVKSVTAPYKYPRKVEFVSELPKTI  
 TGKIKRRELNRNKEFGQI

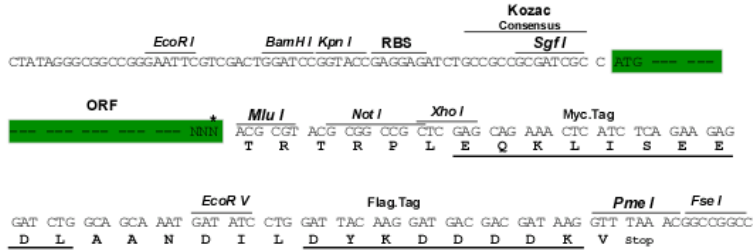
**TRTRPLEQKLI**SEEDLAANDILDYKDDDDKV

**Restriction Sites:**

Sgfl-MluI

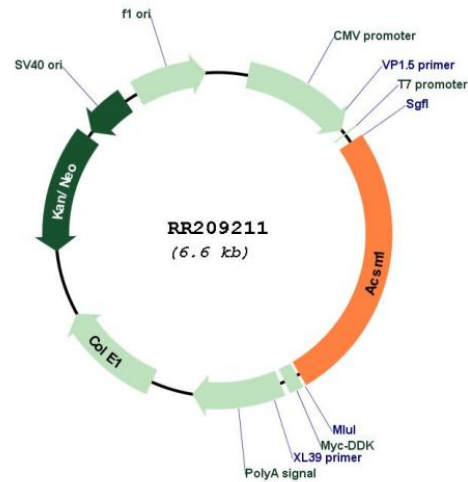
Cloning Scheme:

Cloning sites used for ORF Shuttling:



\* The last codon before the Stop codon of the ORF

Plasmid Map:



ACCN: NM\_001108502  
 ORF Size: 1731 bp

<b>OTI Disclaimer:</b>	The molecular sequence of this clone aligns with the gene accession number as a point of reference only. However, individual transcript sequences of the same gene can differ through naturally occurring variations (e.g. polymorphisms), each with its own valid existence. This clone is substantially in agreement with the reference, but a complete review of all prevailing variants is recommended prior to use. <a href="#">More info</a>
<b>OTI Annotation:</b>	This clone was engineered to express the complete ORF with an expression tag. Expression varies depending on the nature of the gene.
<b>Components:</b>	The ORF clone is ion-exchange column purified and shipped in a 2D barcoded Matrix tube containing 10ug of transfection-ready, dried plasmid DNA (reconstitute with 100 ul of water).
<b>Reconstitution Method:</b>	<ol style="list-style-type: none"><li>1. Centrifuge at 5,000xg for 5min.</li><li>2. Carefully open the tube and add 100ul of sterile water to dissolve the DNA.</li><li>3. Close the tube and incubate for 10 minutes at room temperature.</li><li>4. Briefly vortex the tube and then do a quick spin (less than 5000xg) to concentrate the liquid at the bottom.</li><li>5. Store the suspended plasmid at -20°C. The DNA is stable for at least one year from date of shipping when stored at -20°C.</li></ol>
<b>RefSeq:</b>	<a href="#">NM_001108502.2</a> , <a href="#">NP_001101972.2</a>
<b>RefSeq Size:</b>	2103 bp
<b>RefSeq ORF:</b>	1734 bp
<b>Locus ID:</b>	361638
<b>Cytogenetics:</b>	1q35
<b>MW:</b>	65.4 kDa