

Product datasheet for **RR209181**

Slc6a15 (NM_172321) Rat Tagged ORF Clone

Product data:

Product Type:	Expression Plasmids
Product Name:	Slc6a15 (NM_172321) Rat Tagged ORF Clone
Tag:	Myc-DDK
Symbol:	Slc6a15
Synonyms:	Ntt73
Mammalian Cell Selection:	Neomycin
Vector:	pCMV6-Entry (PS100001)
E. coli Selection:	Kanamycin (25 ug/mL)



[View online »](#)

ORF Nucleotide
Sequence:

>RR209181 representing NM_172321
Red=Cloning site Blue=ORF Green=Tags(s)

TTTTGTAATACGACTCACTATAGGGCGGCCGGAATTCGTCGACTGGATCCGGTACCGAGGAGATCTGCC
GCCGCGATCGCC

ATGCCTAAGAATAGCAAAGTAGTAAAGAGAGATTTGGATGATGATGTCATTGAATCTGTCAAAGACCTCC
TGTCCTAAGAAGACTCAGTGGAAGATGTTTCTAAGAAGAGCGAACTAATTGTTGATGTTCAAGAAGAGAA
AGATACAGATGCTGAAGATGGATCTGAAGTTGATGATGAAAGGCCAGCTTGAACAGTAAGCTGCAATAC
ATCCTGGCGCAAGTTGGATTTTCTGTAGGTCTGGGGAATGTGTGGCGTTCCCATACCTCTGCCAAAAGA
ATGGCGGTGGTGCATATCTTTGCCATATTTAATACTACTTCTGGTGATAGGAATCCACTCTTCTTCTT
GGAACCTTCTGTGGTCAAAGAATTCGGAGAGGCAGCATCGGGTTTGAATTACATAAGCCCTAAACTG
GGTGGGATTGGATTCCGAAGCTGTGTAGTGTGCTATTTGTGGCTCTCTACTACAATGTCATCATTGGCT
GGACATTTGTTTACTTTTCTCAGTCTTTTCAACAACCTCTCCCTGGGATCAATGCCCTGGTGAAAAA
CGCATCTCATACTTATATTGAGCCAGAATGTGAAAAAGTTCTGCCACCCTTATTACTGGTACCGGGAA
GCACTGGCTATCAGCAGCTCCATCTCTGAAAGTGGGGCTTAAACTGGAAGATGACTGGCTGCCTGCTGG
CTGCCTGGGTCATGGTTTGTCTGGCCATGATCAAAGGCATTCACTCCTCTGGAAAAATCATGATTTTAG
TTCTCTGTTCCCTACGTGGTACTTATATGCTTCTTAATAAGATCTCTCCTTTTAAATGGTTCAATTGAT
GGCATCCGACACATGTTCAACCCTAAGCTTGAAATGATGCTGGAGCCCAAGGTTTGGAGAGAGGCAGCGA
CTCAAGTCTTCTTTGCCTGGGTTTGGGATTTGGTGGAGTCATCGCGTTTTCCAGTTACAACAAGAGAGA
CAACAACCTGCCACTTCGACGCTGTCTCGTGTCTTTTACAACTTTTCACTTCAGTCTGGCAACACTG
GTGGTGTTCGCAGTTCTGGGTTCAAAGCCAATATCGTAAATGAAAAGTGCATTTCAAAAATTTGAGA
TGATCTTGAACCTTTTGAACCGGAAACGTTAGTTGGGATGTCATTTCCCGTCACATCAACCTTTGAG
TGTCACTGCGGAAGATTATCATGTAGTTTACGACATCATTCAAAAAGTGAAGGAGGAGGTTTGTCTGTT
CTCCATCTCAAAGCCTGTCAAATTGAGGATGAGCTAAATAAAGCTGTGCAGGGCACTGGCTTGGCTTTCA
TTGCCTTTACAGAGGCCATGACACATTTTCTGCATCTCCCTTCTGGTCAGTGTGTTTTTCTCATGCT
GATAAATCTCGGGCTCGGCAGCATGTTTGAACCATGAAGGAATCATCACTCCTGTTGTGGACACATTC
AAAGTGAAGGAAGGAAATACTCACCGTTATCTGTTGCCTCCTAGCATTGTATCGGCTTGATGTTTGTGC
AGCGCTCTGGAATTAATTCGTTACAATGTTTGTGATGATTATTCTGCCACATTGCCTCTGTTAATCGTGGT
CATCTTGGAGAATATTGCTGTAAGCTTCGTTACGGCATAGATAAGTTTCTAGAAGACCTAACAGACATG
TTAGGATTTGCTCCAAGCAAATATTACTATTACATGTGGAATACATTTCTCCTCTAATGCTAGTAACAT
TGTTAATAGCTAGCATTGTGAATATGGGATTAAGTCTCCGGGATATAATGCATGGATCAAGGAGAAGGC
ATCCGAAGAATTTCTGAGCTACCGATGTGGGGATGGTGGTCTGTTTCTCTCTGATGGTCTGGCTATA
CTTCTGTCCCAGTCGTTTTCTGTCATTCGTCGCTGCAACCTCATAGATGATGTTCTGGTAACTGGCCT
CTGTGACCTATAAGAGAGGAAGAGTCTGAAAGAACCCGTGAACCTAGACGGAGATGATGCAAGCCTCAT
TCACGGAAAGATACCAAGTGAATGTGCTCTCAAATTTGGTAAAAATATCTATCGAAAACAGAGTGGT
TCTCCGACCTGGACACTGCTCCAATGGACGCTATGGGATGGGATTTGATGGCAGATATGCCAGATA
TGCCCGAGTCTGACTTG

ACGCGTACGCGGCCGCTCGAGCAGAACTCATCTCAGAAGAGGATCTGGCAGCAAATGATATCCTGGATT
ACAAGGATGACGACGATAAGGTTTAA

Protein Sequence: >RR209181 representing NM_172321
Red=Cloning site Green=Tags(s)

```
MPKNSKVVKRDLDDVIESVKDLLSNEDSVEDVSKKSELIVDVQEEKDTAEDGSEVDDERPAWNSKLQY
ILAQVGFVSVGLGNVWRFPYLCQKNGGGAYLLPYLILLLVIGIPLFFLELSVGQRIRRGSIQVWNYISPKL
GGIGFASCVVVCFVALYNNVIIGWTLFYFSQSFQQPLPWCQPLVKNASHTYIEPECEKSSATTYYWYRE
ALAISSSISESGGLNWKMTGCLLAAWVMCLAMIKGIQSSGKIMYFSSLFPYVVLICFLIRSLLLNGSID
GIRHMFTPKLEMMLEPKVWREAATQVFFALGLGFGGVI AFSSYNKRDNCHFDVAVLVSFINFFTSVLATL
VYFAVLGFKANIVNEKCI SQNSEMILKLLKTGNVSWDVIPRHINLSAVTAEDYHVYDI IQVKKEEFVAV
LHLKACQIEDELNKAVQGTGLAFIAFTEAMTHFPASPFWVMFFLMLINLGLGSMFGTIEGIITPVVDTF
KVRKEILTVICLLAFICGLMFVQRSGNYFVTMFDDYSATLPLLIVVILENIAVSVFYGIDKFLLEDL TDM
LGFAPSKYYYYMWKYISPLMLVTL L IASIVNMGLSPPGYNAWIKEKASEEFLSYPMWGMVVCFLMVLAI
LPVPVVFVIRRCNLIDSSGNLASV TYKRGRVLKEPVNLDGDDASLIHGKIPSEMSPNFGKNIYRKQSG
SPTLDTAPNGRYGIGYLMADMPDMPESDL
```

TRTRPLEQKLISEEDLAANDILDYKDDDDKV

Restriction Sites:

Sgfl-MluI

Cloning Scheme:

Cloning sites used for ORF Shuttling:



* The last codon before the Stop codon of the ORF

ACCN: NM_172321

ORF Size: 2187 bp

OTI Disclaimer: The molecular sequence of this clone aligns with the gene accession number as a point of reference only. However, individual transcript sequences of the same gene can differ through naturally occurring variations (e.g. polymorphisms), each with its own valid existence. This clone is substantially in agreement with the reference, but a complete review of all prevailing variants is recommended prior to use. [More info](#)

OTI Annotation: This clone was engineered to express the complete ORF with an expression tag. Expression varies depending on the nature of the gene.

Components: The ORF clone is ion-exchange column purified and shipped in a 2D barcoded Matrix tube containing 10ug of transfection-ready, dried plasmid DNA (reconstitute with 100 ul of water).

Reconstitution Method:

1. Centrifuge at 5,000xg for 5min.
2. Carefully open the tube and add 100ul of sterile water to dissolve the DNA.
3. Close the tube and incubate for 10 minutes at room temperature.
4. Briefly vortex the tube and then do a quick spin (less than 5000xg) to concentrate the liquid at the bottom.
5. Store the suspended plasmid at -20°C. The DNA is stable for at least one year from date of shipping when stored at -20°C.

RefSeq: [NM_172321.1](#), [NP_758824.1](#)

RefSeq Size: 4046 bp

RefSeq ORF: 2190 bp

Locus ID: 282712

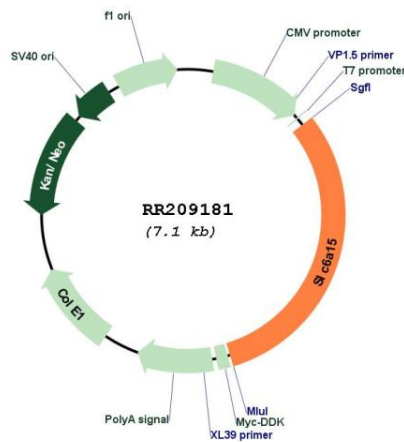
UniProt ID: [Q08469](#)

Cytogenetics: 7q21

MW: 81.6 kDa

Gene Summary: human homolog is a sodium:neurotransmitter symporter [RGD, Feb 2006]

Product images:



Circular map for RR209181