

## Product datasheet for **RR209180**

### **Tmem65 (NM\_001100995) Rat Tagged ORF Clone**

#### Product data:

**Product Type:** Expression Plasmids  
**Product Name:** Tmem65 (NM\_001100995) Rat Tagged ORF Clone  
**Tag:** Myc-DDK  
**Symbol:** Tmem65  
**Synonyms:** RGD1563224  
**Mammalian Cell Selection:** Neomycin  
**Vector:** pCMV6-Entry (PS100001)  
**E. coli Selection:** Kanamycin (25 ug/mL)  
**ORF Nucleotide Sequence:** >RR209180 representing NM\_001100995  
**Red=Cloning site Blue=ORF Green=Tags(s)**

TTTTGTAATACGACTCACTATAGGGCGGCCGGAATTCGTCGACTGGATCCGGTACCGAGGAGATCTGCC  
GCC**CGGATCGCC**

ATGTCCCGGCTGCTGCCGCTGCTGGGGAGCCGGACGGCGCGCAGCCTGAGGCCGGGCCCTGTCGCCCGC  
ACCGCCCGCGTCTGGTGCAGCTGCGGCCGGGACTGCTGGCTCTCGGGTCCCAGTGGTCCCAGGCT  
TCTGGGCACTCACCCCAAGAAGGAGCCATGGAGGCGCTGAACACGGCGCAGGGCGCGCGACTTCATC  
TACAGCCTGCACTCCACCGAAAGGAGCTGCTTGCTCAAAGAGCTGCACCGCTTCGAGTCCATTGCCATCG  
CACAAGCATGCAGATTTCCAAACCTGAGATGGTCTTGGCAAGCGTGCGAAGGAGGTGTCGGCAGCAGA  
GACCCCTGATAGTTTTGAAAAATTGGAAGCTCTACCACCCACTCCAGGACAGCTGAGATATGATTCTTC  
CACAATGCGATACCTTTTCGTAGGTTTGGCTTTTGGATAACGCAATTATGATTGTTGCAGGAACCCAAA  
TTGAATTGCTATTGGAATTATTTGGGAATTTCAACAATGGCAGCTGCTGCTTTGGAAATCTTGTTC  
AGATTTAGCTGGACTTGGCCTTGCAAGTTATGTTGAGGCCTTGGCGTCCAGGTTAGGCCTCTCAATTCT  
GATCTTACACCAAGCAAGTTGACATGTGGCAACACGTGTTAGCACACATTTGGCAAGGCTGTTGGGG  
TGACGATCGGCTGCATTCTAGGAATGTTCCCTTGTATTTCTTTGGAGGAGGTGAAGAAGATGAAAACT  
GAAACATCAAATGGAACATCAAAT

**ACGCGTACGCGGCCGCTCGAGCAGAACTCATCTCAGAAGAGGATCTGGCAGCAAATGATATCCTGGATT**  
**ACAAGGATGACGACGATAAGGTTTAA**



**Protein Sequence:** >RR209180 representing NM\_001100995  
 Red=Cloning site Green=Tags(s)

MSRLLPLLGSRTARSLRPGPVAAHRPPSWCSCGRLLALGVPSGPRLLGTHPKKEPMEALNTAQQARDFI  
 YSLHSTERSCLLKELHRFESIAIAQACRFPKPEMVLAKRAKEVSAAETPDSFEKLEALPPTPGQLRYVFF  
 HNAIPFVGFGLDNAIMIVAGTQIELSIGIILGISTMAAALGNLVSDLAGLGLAGYVEALASRLGLSIP  
 DLTPKQVDMWQTRVSTHLGKAVGVTIGCILGMFPLIFFGGGEEDEKLETSNGNIK

TRTRPLEQKLISEEDLAANDILDYKDDDDKV

**Restriction Sites:** Sgfl-MluI

**Cloning Scheme:**

Cloning sites used for ORF Shuttling:



\* The last codon before the Stop codon of the ORF

**ACCN:** NM\_001100995

**ORF Size:** 783 bp

**OTI Disclaimer:** The molecular sequence of this clone aligns with the gene accession number as a point of reference only. However, individual transcript sequences of the same gene can differ through naturally occurring variations (e.g. polymorphisms), each with its own valid existence. This clone is substantially in agreement with the reference, but a complete review of all prevailing variants is recommended prior to use. [More info](#)

**OTI Annotation:** This clone was engineered to express the complete ORF with an expression tag. Expression varies depending on the nature of the gene.

**Components:** The ORF clone is ion-exchange column purified and shipped in a 2D barcoded Matrix tube containing 10ug of transfection-ready, dried plasmid DNA (reconstitute with 100 ul of water).

**Reconstitution Method:**

1. Centrifuge at 5,000xg for 5min.
2. Carefully open the tube and add 100ul of sterile water to dissolve the DNA.
3. Close the tube and incubate for 10 minutes at room temperature.
4. Briefly vortex the tube and then do a quick spin (less than 5000xg) to concentrate the liquid at the bottom.
5. Store the suspended plasmid at -20°C. The DNA is stable for at least one year from date of shipping when stored at -20°C.

**RefSeq Size:** 2946 bp

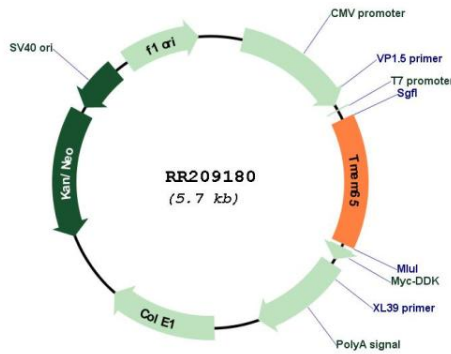
**RefSeq ORF:** 786 bp

**Locus ID:** 500874

**Cytogenetics:** 7q33

**MW:** 27.9 kDa

**Product images:**



Circular map for RR209180