

Product datasheet for **RR209156**

Ap2b1 (NM_080583) Rat Tagged ORF Clone

Product data:

Product Type:	Expression Plasmids
Product Name:	Ap2b1 (NM_080583) Rat Tagged ORF Clone
Tag:	Myc-DDK
Symbol:	Ap2b1
Mammalian Cell Selection:	Neomycin
Vector:	pCMV6-Entry (PS100001)
E. coli Selection:	Kanamycin (25 ug/mL)



[View online »](#)

ORF Nucleotide Sequence:

>RR209156 representing NM_080583
 Red=Cloning site Blue=ORF Green=Tags(s)

TTTTGTAATACGACTCACTATAGGGCGGCCGGAATTCGTGACTGGATCCGGTACCGAGGAGATCTGCC
 GCC**CGGATCGCC**

ATGACTGACTCCAAGTACTTCAACAATAAGAAGGGAGAAATCTTTGAATTAAGGCTGAACTCAACA
 ATGAAAAGAAAAGAAAAGAGGAAGGAGGCTGTGAAGAAAGTGATTGCTGCTATGACCGTGGGAAGGATGT
 GAGCTCTCTCTCCAGATGTGGTGAAGTGTATGCAACTGACAACCTGGAATAAAGAAGCTTGTGTAC
 CTCTATCTGATGAACTATGCCAAGAGTCAGCCAGACATGGCCATCATGGCTGTCAACAGCTTTGTGAAGG
 ATTGTGAAGACCCCAATCCTTTGATTGAGCCTTGGCAGTTAGAACCATGGGATGCATCCGGGTGGACAA
 GATTACAGAGTATCTCTGTGAACCCCTCCGAAGTGTGAAGGATGAAGACCCCTATGTTCCGAAAAACA
 GCAGCAGTATGCGTGGCAAACTCCATGATATCAATGCCAGATGGTGAAGATCAGGGATTTCTGGATT
 CTCTGCGGGATCTCATAGCAGATTCAAACCAATGGTGGTGGCTAATGCTGTAGCAGCATTGTCTGAGAT
 CAGTGAGTCTACCCAAACAGCAACTTACTTGATCTGAACCCCTCAGAATATCAATAAGCTGCTCACAGCC
 CTGAATGAGTGCAGTGGGGCCAGATTTTCATCTTGACTGCCTGTCTAATTAACAACCTAAAGATG
 ACCGGGAAGCTCAGAGCATCTGTGAGCGAGTGACGCTCGGCTCTCTCATGCCAATTCTGCAAGTGGTGT
 TTCAGCAGTAAAAGTTCTGATGAAGTTTCTAGAGTTGTTACCCAAGGACTCTGACTACTACAATATGCTG
 CTAAGAAGCTAGCGCCTCCACTTGTCACTTTGCTCTCTGGGGAGCCAGAAGTGCAGTATGTTGCCCTGA
 GGAACATCAACCTAATTTGCCAGAAAAGGCTGAAATCTGAAGCAGGAAATCAAGGTCTCTTTGTGAA
 GTACAATGATCCTATCTATGTTAACTAGAGAAGTTAGACATCATGATTCGTCTTGATCCCAAGCCAAC
 ATTGCTCAGGTTCTGGCAGAATGAAGGAATAGCCACTGAAGTTGATGTGGACTTTGTTCCGAAAGCTG
 TGAGGGCCATTGGACGGTGTGCCATCAAAGTGGAGCAATCAGCAGAACCGTGTGTGAGCAGACTCTTGA
 TCTAATCCAGACCAAAGTAAATTATGTGGTCCAAGAGGCAATTGTTGTCATCAGGGACATCTTCCGAAAA
 TACCCCAACAAGTATGAGAGCATTATCGCCACGCTGTGTGAGAAGTTGGACTCCCTGGATGAACCCGATG
 CCCGAGCGGCTATGATTTGGATTGTAGGAGAGTATGCTGAAAGAATCGATAATGCCGATGAGTTACTAGA
 GAGCTTCTGGAAGGTTTTATGATGAAAGCACCCAGGTGCAGCTCACGTTGCTTACCGCATAGTGAAA
 CTGTTTCTCAAGAAGCCATCAGAAACACAGGAGCTGGTCCAACAGGTCTTGAGCTTGCCACACAGGATT
 CTGATAATCCTGACCTTCGAGATCGGGTTATATTTATGGCGCCTTCTTCAACTGACCTGTGACAGC
 CAAAGAAGTAGTGTGTCTGAGAAGCCATTGATCTCTGAGGAAACAGACCTCATTGAACCTACCCTCCTG
 GATGAGCTCATCTGCCACATTGGTTCTTTGGCCTCCGTGTACCATAAACCTCCGAATGCTTTTGTGGAAG
 GGAGCCATGGCATTTCATCGAAACACTTCCAATTCACCATGGGAGCACTGATGCAGGTGATAGCCCTGT
 TGGCACCACCACTGCAACCAACCTGGAACAGCCTCAGGTCATCCCTCTCAAGGTGACCTTCTGGGGAT
 CTTTTAAATCTTGACCTGGGTCCCCAGTGAATGTCCCGCAAGTGTCTCCATGCAGATGGGAGCAGTGG
 ATCTTTTAGGAGGAGGACTGGATAGCCTGCTTGGCAGTGACCTTGGCGGGGGCATTGGAGGAAGTCCGGC
 AGTAGGACAGTCTTCATCCCGTCATCAGTGCCTGCAACCTTCGCTCCTTCACTACTCCTGTGTGGTC
 AGCAGTGGTCTGAATGACCTGTTGAGCTTCCACTGGGATAGGCATGGCACCTGGCGGATATGTGGCTC
 TAAGGCAGTCTGGCTACCTGCTGTAAGGCTAAAGGCTTGGAGATTTGGGGACGTTTACTCACCGCCA
 AGGCACATCTATGGAATGAACCTTCAACAACAAGCTCTGCAGCACATGACGGATTTGCCATCCAG
 TTTAACAAGAATAGCTTCGGTGTATCCCGAGCACTCCCTTGGCCATACATACTCCGCTGATGCCAAACC
 AGAGCATTGATGTGTCTGCTCTCAACACCTTGGGCCAGTCAAGATGGAGCCTCTGAATAACTT
 GCAGGTGGCTGTTAAAAACAATATTGATGTCTTACTTCACTCAGCTGCCTCATCCCACTCAATGTGCTTTT
 GTAGAAGATGGCAAAATGGAACGCCAGGTCTTCTTGGCAGTGGAAAGGATATCCCAATGAAAATGAGC
 TCCAATTTAGATTAAGGAGTGTCAATTAACGCTGACACAGTTTCCAGCAAGTTGCAAAACAACAATGT
 TTACACTATCGCCAAGAGGAATGTGGAGGGCAGGACATGCTGTACCAGTCCCTGAAGCTCAATATGGC
 ATTTGGATTTTGGCAGAGCTGCGGATCCAGCCAGGAAACCCCAATATACGCTGTCGCTGAAGTGTAGAG
 CCCCTGAAGTCTCTCAGTACATCTATCAGGTCTACGACAGCATTTTGAAAAACCCCTGAAGTCTCTCAG
 TACATCTATCAGGTCTACGACAGCATTTTGAAAAAC

ACGCGTACGCGGCCGCTCGAGCAGAAACTCATCTCAGAAGAGGATCTGGCAGCAAATGATATCCTGGATT
 ACAAGGATGACGACGATAAGGTTTAA

Protein Sequence: >RR209156 representing NM_080583
 Red=Cloning site Green=Tags(s)

MTDSKYFTTNKKGEIFELKAELNNEKKEKRKEAVKKVIAAMTVGKDVSSLFPDVVNCMQTDNLELKKLVY
 LYLMNYAKSQPDMAIMAVNSFVKDCEDPNPLIRALAVRTMGCIRVDKITEYLCEPLRCKLKDEDYPYVRKT
 AAVCVAKLHDINAQMVEDQGFLLDSLRLDIADSNPMVVANAVAALSEISESHPNLNLLDLPQNKLLTA
 LNECTEWGQIFILDCLSNYNPKDDREAQSI CERVT PRLSHANSAVVLSAVKVLMKFLELLPKDSDYYNML
 LKKLAPPLVTLLSGPEVQYVALRNINLIVQKRPEILKQEI KVFV KYNDPIYVKLEKLDIMIRLASQAN
 IAQVLAELKEYATEVDVDFVRKAVRAIGRCAIKVEQSAERCVSTLLDLIQTKVNYVYVQEAI VVIRDIRK
 YPNKYESIATLCENLDSLDEPDARAAMIWIVGEYAERIDNADELLESFLEGFHDESTQVQLTLLTAIVK
 LFLKPKSETQELVQVLSLATQSDNPDLRDRGYIYWRLLSTDPVTAKEVVLSEKPLISEETDLIEPTLL
 DELICHIGSLASVYHKPPNAFVEGSHGIHRKHLPIHHGSTDAGDSPVGT TATNLEQPQVIPSQGDLLGD
 LLNLDLGPVNVQVSSMQMGAVDLLGGGLD L L GSDLGGGIGGSPAVGQSFIPSSVPATFAPSPTPAVV
 SSSLNDL FELSTGIGMAPGGYVAPKAVWLPVAKAKGLEISGTFTHRQGHIMEMNF TNKALQHMTDFAIQ
 FNKNSFGVIPSTPLAIHTPLMPNQSIDVSLPLNTLGPVMKMEPLN LQVAVKNNIDVYFV SCLIPLVNLF
 VEDGKMERQVFLATWKDIPNENELQFQIKECHLNADTVSSKLQNNVYTTIAKRNVEGQDMLYQSLKLTNG
 IWILAELRIQGNPNYTL SLKCRAPEVSQYIYQVYDSILKNPLKSLSTSIRSTTAF*K

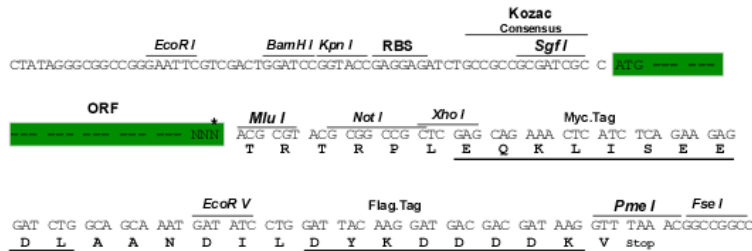
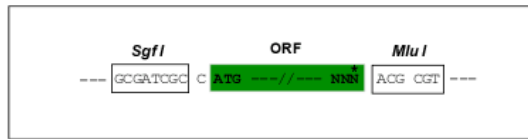
TRTRPLEQKLISEEDLAANDILDYKDDDDKV

Chromatograms: https://cdn.origene.com/chromatograms/ja1463_b04.zip

Restriction Sites: SgfI-MluI

Cloning Scheme:

Cloning sites used for ORF Shuttling:



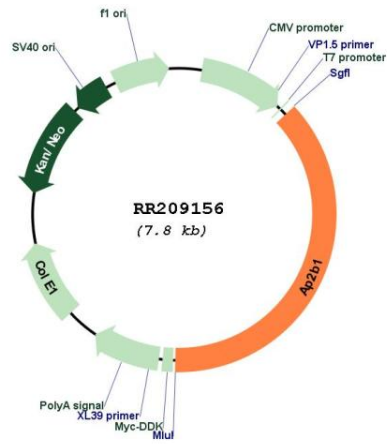
* The last codon before the Stop codon of the ORF

ACCN: NM_080583

ORF Size: 2906 bp

OTI Disclaimer:	The molecular sequence of this clone aligns with the gene accession number as a point of reference only. However, individual transcript sequences of the same gene can differ through naturally occurring variations (e.g. polymorphisms), each with its own valid existence. This clone is substantially in agreement with the reference, but a complete review of all prevailing variants is recommended prior to use. More info
OTI Annotation:	This clone was engineered to express the complete ORF with an expression tag. Expression varies depending on the nature of the gene.
Components:	The ORF clone is ion-exchange column purified and shipped in a 2D barcoded Matrix tube containing 10ug of transfection-ready, dried plasmid DNA (reconstitute with 100 ul of water).
Reconstitution Method:	<ol style="list-style-type: none"> 1. Centrifuge at 5,000xg for 5min. 2. Carefully open the tube and add 100ul of sterile water to dissolve the DNA. 3. Close the tube and incubate for 10 minutes at room temperature. 4. Briefly vortex the tube and then do a quick spin (less than 5000xg) to concentrate the liquid at the bottom. 5. Store the suspended plasmid at -20°C. The DNA is stable for at least one year from date of shipping when stored at -20°C.
Note:	Plasmids are not sterile. For experiments where strict sterility is required, filtration with 0.22um filter is required.
RefSeq Size:	5413 bp
RefSeq ORF:	2856 bp
Locus ID:	140670
UniProt ID:	P62944
Cytogenetics:	10q26
MW:	105.7 kDa
Gene Summary:	subunit of the clathrin-associated protein complex 2 [RGD, Feb 2006]

Product images:



Circular map for RR209156