

## Product datasheet for **RR209152**

### **Tbc1d24 (NM\_001105769) Rat Tagged ORF Clone**

#### **Product data:**

Product Type:	Expression Plasmids
Product Name:	Tbc1d24 (NM_001105769) Rat Tagged ORF Clone
Tag:	Myc-DDK
Symbol:	Tbc1d24
Synonyms:	RGD1306143
Mammalian Cell Selection:	Neomycin
Vector:	pCMV6-Entry (PS100001)
E. coli Selection:	Kanamycin (25 ug/mL)



[View online »](#)

**ORF Nucleotide Sequence:**

>RR209152 representing NM\_001105769  
 Red=Cloning site Blue=ORF Green=Tags(s)

TTTTGTAATACGACTCACTATAGGGCGGCCGGAATTCGTCGACTGGATCCGGTACCGAGGAGATCTGCC  
 GCC**GCGATCGCC**

ATGGACTCCCCAGGGTACAATTGCTTTGTGGATAAGGACAAGATGGACGCGTCCATCCAGGACCTGGGGC  
 CAAAGGAGCTGAACTACACCGAGCTACAGGAGCTGAAGCAGCTGGCGCGCAGGGTACTGGGCTCAGAG  
 CCACGCCTGCGGGGAAAGTGTACCAGCGTCTGATCCGGGACATCCCCTGCCGACGGTACACCCGAC  
 GCCAGCGTGTACAGCGACATCGTGGGAAGATTGTGGCAAGCACAGCAGCAGTAGCTTGCCCTGCCTG  
 AGTTTGTAGACAACACTCAGGTGCCACCTACTGCCTGAACCCGCGGGGTGAGGGGGCCGTGCGCAAGT  
 CCTCTGTGCATGCCAACCAGTTCGCCGACATCTCCTTCTGCCCTGCCCTGCCCGGGTGGTGGCCTTG  
 CTGCTACACTACAGCATTGACGAGGCCGAGTGTCTTAAAAGGCCTGCCGATCTTGTCTGCAACGACC  
 CCGCAAGAAGCTCATTGACCAGAGCTTCTGGCCTTCGAGTCTTCTGTATGACGTTTGGAGACCTGGT  
 GAACAAGTACTGCCAGGACGCCACAACTGATGGTGGCCGTGTACAGGACGTTCTGCAGGTCTACTCT  
 GACTGGCAGAGATGGCTCTTTGGGGAGCTGCCCTCAACTACTTTGCCCGGTTTTCGAGGTCTTCTTG  
 TAGAAGGCTACAAGTACTGTACCGAGTCGCTCTGGCCATCCTCAAGTCTTCCACAAGGTGAGAGCAGG  
 ACAGCCCTTGAGTCAGACAATGTAAGCAAGACATCCGGATGTTTGTCAAGGACATTGCCAAGACAGTG  
 TCCCCTGAGAACTACTAGAGAAGGCCTTTGCCATCCGCCTGTTTTCCCGCAAGGAGATTGAGCTCTTGC  
 AAATGGCCAATGAGAAAGCCCTGAGGCAGAAGGGTATTACTGTCAAACAGAAGAGGCAGTTTGTACACTT  
 GGCTGTCCATGCAGAGAACTCCGCTCAGAGATTGTGAGTGTGAAGGAGATGAGAGACATTTGGTCTGG  
 ATCCCTGAGCGCTTCGCCCTCTGCCAACCCCTCCTGCTTCTCGTCGCTGCAGCATGGGTACAGCCTAA  
 GCAGTTCTATTTCCAGTGCAGGAGCATGAGCCACACTCCTGCTCATCAAGACCACTCAAAGGAGGT  
 TTGTGGGCTTACCTGTCAACAGACTGGAGTGAGCGGAATAAGTTCGGAGGCAAGCTGAGCTTCTTTGGG  
 ACTGGAGAATGCTTTGTTTTAGGCTGCAGCCGAGGTGCAGCGCTATGAGTGGGTGGTATCAAGCACC  
 CAGAACTGACCAAGGCAGCATCCTTCAAGTCTCAGAGGCTGCAGCCAATCCTTGCCCTATCAGCCACTC  
 CGTCTCTCAGACCCGCGACCGGCTCTCTCTTTCTGGCTGCCCGGCACTTCAACCTGCCCTCCAAG  
 ACCGAGTCCATGTTTATGGTGGGGCAACGACTGCCTCATATTGGGGAGGAGGTGGCCAAGCACTCT  
 ACATCGATGGGGATCTGAACCGAGGGCGCACCGGACACTGTGACAGTTCAACAACCGCCCTGTGCTC  
 GGAGAGCTTCTCATCGCGCCGTGGAGGCTTGGGGCTCCAAGACCCCGACCCAG

AG**CGGACCG**ACGCGTACGCGCCGCTCGAGCAGAACTCATCTCAGAAGAGGATCTGGCAGCAAATGATATCC  
 TGGATTACAAGGATGACGACGATAAGGTTTAA

**Protein Sequence:**

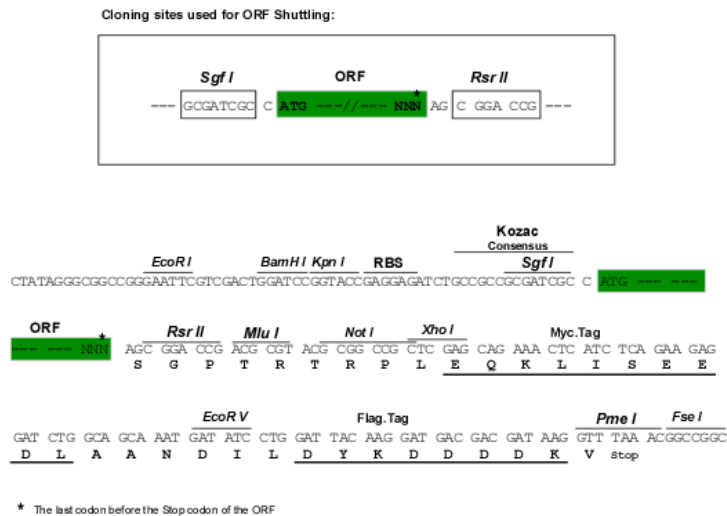
>RR209152 representing NM\_001105769  
 Red=Cloning site Green=Tags(s)

MDSPGYNCFVDDKMDASIQDLGPKELNYTELQELKQLARQGYWAQSHALRGKVVYQRLIRDIPCRVTPD  
 ASVYSDIVGKIVGKHSSSLPLPEFVDNTQVPTYCLNPRGEGAVRKILLCIANQFPDISFCPALPAVVAL  
 LLHYSIDEAEFEKACRILSCNDPGKLLIDQSFLAFESSCMTFGDLVNKYCQAHLKLMVAVSEDVLQVYS  
 DWQRWLFGELPLNYFARVDFVFLVEGYKVLRYVALAILKFFHKVRAGQPLESDNVKQDIRMFVKDIAKTV  
 SPEKLLKFAIRLFSRKEIQLLQMANEKALRQKGITVKQKRQFVHLAVHAENFRSEIVSVKEMRDIWSW  
 IPERFALCQPLLLFSSLQHGYSLSRFYFQCEGHEPTLLLKTTQKEVCGAYLSTDWSERNKFGGKLSFFG  
 TGECFVFRLLQPEVQRYEYVVIKHPELTKAASFKSSEAAANPCLISHSVSSDPADRLSPFLAARHFNLPK  
 TESMFMAGGNDCLIIGGGGQALYIDGLNRGRTGHCDTFNNQPLCSESFLIAAVEAWGFQDPDTQ

**SGP**TRTRPLEQKLISEEDLAANDILDYKDDDDKV

**Restriction Sites:**

Sgfl-RsrII

**Cloning Scheme:**


**ACCN:** NM\_001105769

**ORF Size:** 1668 bp

**OTI Disclaimer:** The molecular sequence of this clone aligns with the gene accession number as a point of reference only. However, individual transcript sequences of the same gene can differ through naturally occurring variations (e.g. polymorphisms), each with its own valid existence. This clone is substantially in agreement with the reference, but a complete review of all prevailing variants is recommended prior to use. [More info](#)

**OTI Annotation:** This clone was engineered to express the complete ORF with an expression tag. Expression varies depending on the nature of the gene.

**Components:** The ORF clone is ion-exchange column purified and shipped in a 2D barcoded Matrix tube containing 10ug of transfection-ready, dried plasmid DNA (reconstitute with 100 ul of water).

- Reconstitution Method:**
1. Centrifuge at 5,000xg for 5min.
  2. Carefully open the tube and add 100ul of sterile water to dissolve the DNA.
  3. Close the tube and incubate for 10 minutes at room temperature.
  4. Briefly vortex the tube and then do a quick spin (less than 5000xg) to concentrate the liquid at the bottom.
  5. Store the suspended plasmid at -20°C. The DNA is stable for at least one year from date of shipping when stored at -20°C.

**RefSeq:** [NM\\_001105769.1](#), [NP\\_001099239.1](#)

**RefSeq Size:** 3923 bp

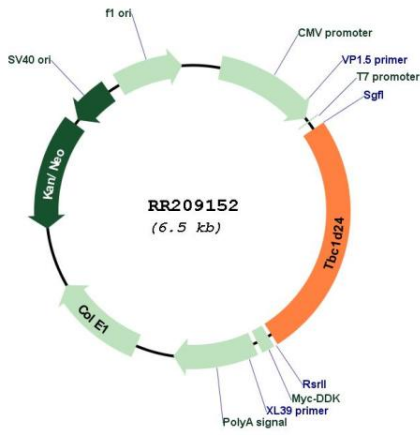
**RefSeq ORF:** 1671 bp

**Locus ID:** 287110

**Cytogenetics:** 10q12

MW: 62.8 kDa

Product images:



Circular map for RR209152