

Product datasheet for RR209142

Siah2 (NM_134457) Rat Tagged ORF Clone

Product data:

Product Type:	Expression Plasmids
Product Name:	Siah2 (NM_134457) Rat Tagged ORF Clone
Tag:	Myc-DDK
Symbol:	Siah2
Mammalian Cell Selection:	Neomycin
Vector:	pCMV6-Entry (PS100001)
E. coli Selection:	Kanamycin (25 ug/mL)
ORF Nucleotide Sequence:	>RR209142 representing NM_134457 Red=Cloning site Blue=ORF Green=Tags(s)

TTTTGTAATACGACTCACTATAGGGCGGCCGGAATTCGTCGACTGGATCCGGTACCGAGGAGATCTGCC
GCC**CGATCGCC**

ATGAGCCGCCCGTCTCCACCGGCCAGCGCTAACAAACCCTGCAGCAAGCAGCCGCCCGCCTCAGA
CCCCGCACGCCCGTCCCCGGCTGCGCCCCGGCTGCCGCCACCATCTCGGCTGCGGGCCCCGGCTCGT
CGCGGTGCCCGCCGCGGACGGTGATCTCAGGCCCGCGCGCGGGCCGGCCAGTGTCCCCG
CAGCACCAGAGCTGACCTCGCTGTTTCGAGTGCCCGTCTGTTTTGACTATGTCCTGCCCCATTCTGC
AGTGCCAGGCCGGCACCTGGTGTGAACCAATGCCCCAGAAGTTGAGCTGCTGCCCGAGTGCAGGGG
CGCCCTAACGCCAGCATCAGGAACCTGGCTATGGAGAAGGTCGCTCGGCAGTTCTGTTCCCTGTAAG
TATGCCACCACGGGCTGTTCCCTGACTCTACACCATACAGAGAAACCAGAGCATGAAGACATCTGTGAAT
ACCGTCTTATTCTGTCCCTGTCTGGTGCCTCCTGCAAGTGGCAAGGATCCCTAGAAGCTGTGATGTC
CCATCTCATGCATGCCACAAGAGCATCACTACCCTTCAGGGAGAGGACATAGTCTTTCTAGCTACAGAC
ATTAACCTGCCAGGGCTGTGGACTGGGTGATGATGCAGTCTGTTTTGGCCACCACTTCATGCTGGTAC
TCGAGAAGCAAGAGAAGTACGAAGTACCAGCAGTCTTTGCCATCGTCTCCTCATTGGCACCCGCAA
GCAAGCAGAGAACTTTGCCTACAGACTGGAGTTGAATGGGAACCGGAGGAGACTGACCTGGGAGGCCACA
CCCCGGTCCATTCATGATGGTGTGGCTGCAGCCATCATGAACAGTGACTGCCTTGTTTTTGACACAGCCA
TAGCACATCTCTTGCAGATAATGGGAACCTTGAATCAATGTCACAATATCTACATGCTGTCAG

ACGCGTACGCGGCCGCTCGAGCAGAAACTCATCTCAGAAGAGGATCTGGCAGCAAATGATATCCTGGATT
ACAAGGATGACGACGATAAGGTTTAA



[View online »](#)

Protein Sequence: >RR209142 representing NM_134457
 Red=Cloning site Green=Tags(s)

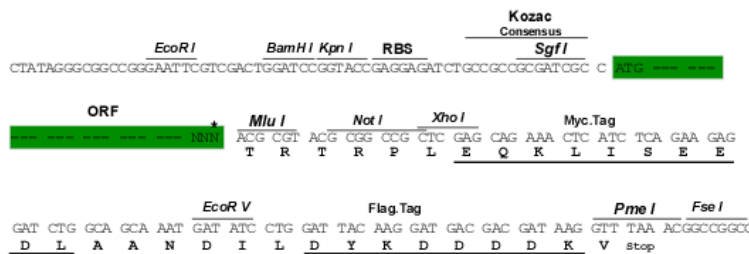
MSRPSSTGPSANKPCSKQPPPPQTPHAPSPAAPPAAATISAAGPGSSAVPAAAAVISGPGAGGGAGVPVSP
 QHHELTSLFECPVCFDYVLPPIQLCQAGHLVCNQCRQKLSCCPTCRGALTPSIRNLAMEKVASAVLFPCK
 YATTGCSLTLHHTEKPEHEDICEYRYPYSCPCPGASCKWQGSLEAVMSHLMHAHKSITTLQGEDIVFLATD
 INLPGAVDWMMQSCFGHHFMLVLEKQEKEYEGHQFFAIVLLIGTRKQAEAFAYRLELNGNRRRLTWEAT
 PRSIIHDGVAAMNSDCLVFDTAIAHLFADNGNLGINVTISTCCQ

TRTRPLEQKLISEEDLAANDILDYKDDDDKV

Restriction Sites: SgfI-MluI

Cloning Scheme:

Cloning sites used for ORF Shuttling:



* The last codon before the Stop codon of the ORF

ACCN: NM_134457

ORF Size: 975 bp

OTI Disclaimer: The molecular sequence of this clone aligns with the gene accession number as a point of reference only. However, individual transcript sequences of the same gene can differ through naturally occurring variations (e.g. polymorphisms), each with its own valid existence. This clone is substantially in agreement with the reference, but a complete review of all prevailing variants is recommended prior to use. [More info](#)

OTI Annotation: This clone was engineered to express the complete ORF with an expression tag. Expression varies depending on the nature of the gene.

Components: The ORF clone is ion-exchange column purified and shipped in a 2D barcoded Matrix tube containing 10ug of transfection-ready, dried plasmid DNA (reconstitute with 100 ul of water).

Reconstitution Method:

1. Centrifuge at 5,000xg for 5min.
2. Carefully open the tube and add 100ul of sterile water to dissolve the DNA.
3. Close the tube and incubate for 10 minutes at room temperature.
4. Briefly vortex the tube and then do a quick spin (less than 5000xg) to concentrate the liquid at the bottom.
5. Store the suspended plasmid at -20°C. The DNA is stable for at least one year from date of shipping when stored at -20°C.

RefSeq: [NM_134457.1](#), [NP_604452.1](#)

RefSeq Size: 2048 bp

RefSeq ORF: 978 bp

Locus ID: 140593

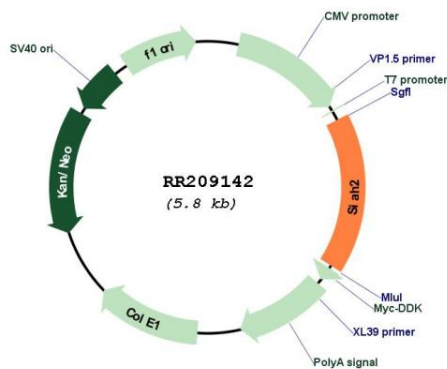
UniProt ID: [Q8R4T2](#)

Cytogenetics: 2q26

MW: 34.7 kDa

Gene Summary: a synaptophysin binding protein and also interact with E2 ubiquitin-conjugating enzyme UbcH8; involved in the regulating the ubiquitination and degradation of synaptophysin [RGD, Feb 2006]

Product images:



Circular map for RR209142