

Product datasheet for **RR209137**

Dpp3 (NM_053748) Rat Tagged ORF Clone

Product data:

Product Type:	Expression Plasmids
Product Name:	Dpp3 (NM_053748) Rat Tagged ORF Clone
Tag:	Myc-DDK
Symbol:	Dpp3
Synonyms:	MGC124585
Vector:	pCMV6-Entry (PS100001)
E. coli Selection:	Kanamycin (25 ug/mL)
Cell Selection:	Neomycin



[View online »](#)

ORF Nucleotide
Sequence:

>RR209137 representing NM_053748
 Red=Cloning site Blue=ORF Green=Tags(s)

TTTTGTAATACGACTCACTATAGGGCGGCCGGGAATTCGTCGACTGGATCCGGTACCGAGGAGATCTGCC
 GCCGCGATCGCC

ATGGCAGATACCCAGTACATCCTGCCCAATGACATCGGTGTGTCTAGCCTGGACTGCCGGGAGGCATTCC
 GCCTGCTGTACCCACAGAGCGCCTCTATGCCATCACCTGTCTAGAGCCGCTTGGTATGGAGCCCTGGC
 TGTGCTGTCCAGACATCTCCTGAAGCCCCCTACATCTATGCCCTGCTTAGCCGCTCTTCCGTGCCAG
 GACCTGACCAGCTACGCCAACATGCCCTGGTGAGGGCCTGACTGAAGAAGAGTATCAGGCATTCTGG
 TCTACGCTGCAGGGTCTACTCCAACATGGGCACTATAAGTCTTCGGTGACACCAAGTTTGTCCCTAA
 CCTGCCAAGGAAAAGCTGGAGCGTGTGATCCTTGGGAGTAAGGCTGCCAACAGCATCCAGAAGAAGTC
 AGGAGCCTTTGGCAGACCTGTGGGAGCTTATGTTCTCCCTGGAACCAAGGCTTCGACATCTTGGGCTGG
 GGAAGGAGGGAGTACCACCTATTTCTCTGGGATTGTGCCATGGAAGATGCCAAGCTGGCCAGGACTT
 CCTGGACTCTCAGAACCTCAGTGCATACAACACCCGGCTCTCAAGGTGGTCGGCCAGGAAGGGAAGTAC
 CACTATGAGGTGCGACTGGCTTCACTACTCAACACAGAACCTGCTCTCGACTCTGAGTTGACTTCCAAGC
 TGAAGAGCTACGAGTTCAGGGGAATCATTTCCAGGTCACCCGTGGGGACTATGCCCCATCCTCCAGAA
 GGTGGTAGAACACTTGGAGAAAGCTAAGGCTTATGCAGCCAATAGCCACCAGGAGCAATGCTGGCCAG
 TATGTGGAGAGCTTACCCAGGGTTCATTGAGGCCCATAAAGAGGGGCTCCCGCTTCTGGATTGAGGACA
 AAGGTCCCATTGTAGAGAGTTACATTGGCTTCAATTGAGAGCTACCGTGACCCCTTTGGCTCCCGAGGAGA
 ATTTGAAGGCTTCGTGGCCATGGTAAACAAAGACATGAGTGCAAAGTTCGAGCGGCTGGTTGCAAGTGT
 GAGCAGCTGTGAAGGAGCTGCCTTGGCCTCCTGCCTTTGAGAAGGACAAGTTCCTCACCCCTGACTTCA
 CTCCTGGATGTCCTTACCTTTGCCGGCTCTGGCATCCCTGCAGGCATCAACATCCCCAACTATGATGA
 CCTGAGACAGACAGAGGGCTTTAAGAATGTGTCTCTGGGGAATGTGCTGGCTGTGGCCTATGCCACAAAG
 CGGGAGAAACTACCTTCATGGAGGAAGAAGACAAGGACCTGTACATCCGCTGGAAGGGGCCGCTTTTG
 ATGTGCAGGTGGGGTTACATGAGCTGTTGGGCCATGGCAGCGGCAAGCTCTTGTACAGGATGAGAAAGG
 TGCTTTCAACTTTGACCAGGAGACAGTATCAACCCAGAGACTGGGGAGCAGATCCAGAGCTGGTACCGG
 AGTGGAGAGACATGGGATAGCAAATTTAGCACCATTGCCCTCAGCTACGAAGAGTGCCGGGCTGAGAGCG
 TGGGCTCTACCTCTGTCTCAACCCCAAGTACTTCAGATCTTTGGCTTTGAGGGAAGTACACCCAGAG
 TGTCTATGTGAAGTGGTCAACATGGTCCGGGCTGGGCTGTTGGCTTTGAGTCTACACCCAGAG
 ACGGCCAACTGGCGACAGGCCACATGCAGGCCGGTTTGTGATCCTGAGGGTTTGTGGAAGCTGGCG
 AAGGACTCGTTACCGTACCCCCACCACAGGCTCTGATGGGCGCCAGATGCTCGTGTCCACCTGGACCG
 CAGCAAGATCCGGTCAAGTGGGCAAACTGCTTTGGAGCGGTTCTCCGGAGACTGCAGGTGCTGAAGTCC
 ACAGGGGATGTGGTTGCAGGGCGCGCCCTGTACGAGGGCTATGCGGCGGTCACTGACGCACCCCCAGAGT
 GCTTCTCACTCTAAGGGACACGGTATTGCTGCGCAAGGAATCCCGGAAGCTTATTGTCCAGCCCAACAC
 TCGCCTGGAAGGCTCAGAAGTGAACCTGTAGAGTATGAGGCCTCAGCGGCTGGTCTCATCCGATCCTTC
 TGTGAACGGTTTCCGGAGGATGGCCTGAGTTGGAGGAGTTCTTACCCAGCTGGCCACAGCAGATGCTC
 AATTCTGGAGGGATCAGGTCCAGGAGGCCCATCTGGCCAGGCT

ACGCGTACGCGGCCGCTCGAGCAGAAACTCATCTCAGAAGAGGATCTGGCAGCAAATGATATCCTGGATT
 ACAAGGATGACGACGATAAGGTTTAA

Protein Sequence: >RR209137 representing NM_053748
 Red=Cloning site Green=Tags(s)

MADTQYILPNDIGVSSLDCREAFRLLSPTERLYAHLHLSRAAWYGGGLAVLLQTSPEAPYIYALLSRLFRAQ
 DPDQLRQHALAEGLETEEYQAFVYAAGVYSNMGNYSFGDTKFVPLPKKLERVILGSKAAQQHPPEEV
 RSLWQTCGELMFSLEPRLRHLGLGKEGVTTYFSGDCAMEDAKLAQDFLDSQNL SAYNTRLFKVVQEGKY
 HYEVRLASVLTNEPALDSELT SKLKS YEFQGNHFQVTRGDYAPILQKVVEHLEKAKAYAANSHQEQLAQ
 YVESFTQGSIEAHRGSRFWIQDKGPIVE SYIGFIESYRDPFGSRGEFEGFVAMVKNKMSAKFERLVASA
 EQLLKELPWPPAFEKDKFLTPDFTSLDVLTFAGSGIPAGINIPNYDDL RQTEGFKNVSLGNVLAVAYATK
 REKLT FMEEEKDLYIRWKGPSFDVQVGLHELLGHGSGKLFVQDEKGFNFDQETVINPETGEQIQSWYR
 SGETWDSKFSTIASSYEECRAESVGLYLCLNPQVLQIFGFEGTDAEDVIYVNWLNVMVRAGLLALEFYTPE
 TANWRQAHMQARFVILRVLLEAGEGLVTPTTGS DGRPDARVHLDRSKIRSVGKPALERFLRRLQVLKS
 TGDVVAGRALYEGYAAVTDAPPECFLTRDVTLLRKESRKLIVQPNTRLEGSEVQLVEYEASAAGLIRSF
 CERFPEDGPELEEVLTQLATADAQFWRDQVQEAPSGQA

TRTRPLEQKLI SEEDLAANDILDYKDDDDKV

Restriction Sites:

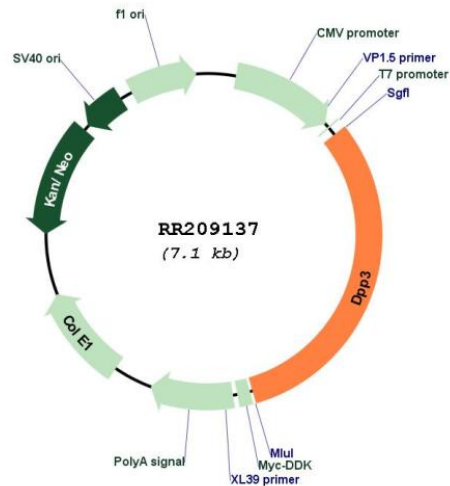
Sgfl-MluI

Cloning Scheme:

Cloning sites used for ORF Shuttling:



* The last codon before the Stop codon of the ORF

Plasmid Map:


ACCN: NM_053748

ORF Size: 2214 bp

OTI Disclaimer: The molecular sequence of this clone aligns with the gene accession number as a point of reference only. However, individual transcript sequences of the same gene can differ through naturally occurring variations (e.g. polymorphisms), each with its own valid existence. This clone is substantially in agreement with the reference, but a complete review of all prevailing variants is recommended prior to use. [More info](#)

OTI Annotation: This clone was engineered to express the complete ORF with an expression tag. Expression varies depending on the nature of the gene.

Components: The ORF clone is ion-exchange column purified and shipped in a 2D barcoded Matrix tube containing 10ug of transfection-ready, dried plasmid DNA (reconstitute with 100 ul of water).

Reconstitution Method:

1. Centrifuge at 5,000xg for 5min.
2. Carefully open the tube and add 100ul of sterile water to dissolve the DNA.
3. Close the tube and incubate for 10 minutes at room temperature.
4. Briefly vortex the tube and then do a quick spin (less than 5000xg) to concentrate the liquid at the bottom.
5. Store the suspended plasmid at -20°C. The DNA is stable for at least one year from date of shipping when stored at -20°C.

RefSeq: [NM_053748.1](#), [NP_446200.1](#)

RefSeq Size: 2632 bp

RefSeq ORF: 2217 bp

Locus ID: 114591

UniProt ID: [O55096](#)

Cytogenetics: 1q43

MW: 83 kDa

Gene Summary: catalyzes the release of an N-terminal dipeptide from a peptide of four or more residues; catalyzes the hydrolysis of Arg-Arg-2-naphthylamide; binds zinc [RGD, Feb 2006]