

Product datasheet for **RR209112**

Ei24 (NM_001025660) Rat Tagged ORF Clone

Product data:

Product Type: Expression Plasmids
 Product Name: Ei24 (NM_001025660) Rat Tagged ORF Clone
 Tag: Myc-DDK
 Symbol: Ei24
 Synonyms: MGC112713
 Vector: pCMV6-Entry (PS100001)
 E. coli Selection: Kanamycin (25 ug/mL)
 Cell Selection: Neomycin
 ORF Nucleotide Sequence: >RR209112 representing NM_001025660
 Red=Cloning site Blue=ORF Green=Tags(s)

TTTTGTAATACGACTCACTATAGGGCGCCGGAATTCGTCGACTGGATCCGGTACCGAGGAGATCTGCC
 GCC**CGGATCGCC**

ATGGCTGACAGTGTCAAACCTTTCTGCAGGACCTTGGCAGGGGAATCAAAGACTCCATCTGGGGCATCT
 GTACCATCTCAAAGCTAGATGCTCGGATCCAGCAGAAGAGAGAGGAGCAGCGTCGAAGGAGGGCAAGTAG
 CCTTTGGCCAGAGGAGAGCCAGAGTGTAGAGCGGAAGCAAGAGAGTGAGCCACGTATTGTTAGTAGA
 ATTTTCCAGTGTGTGCTTGGAAATGGTGGAGTATTCTGGTTCAGTCTCCTTTGTTTACCAGAGTGTTA
 TTCTGTGCTTCAATCAGTAACAGCCCGGGTATTGGTGTCCGTCACATACATGGAGATGTTTGGTCATG
 GCTGGAATTTCTCCTCACATCAATTTTCACTGCTCTTTGGGTGCTGCCCTGTTTGTGCTTAGCAAAGTT
 GTGAATGCCATTTGGTCCAAGATATAGCTGACTTGGCATTGAGGTATCAGGGAGGAAACCTCATCCAT
 TCCCCAGTGTGAGCAAAATAATTGCTGACATGCTCTTCAACCTTTTGTACAGGCACTTTTCTTATTCA
 GGGGATGTTTGTGAGTCTTCCCCATCCATCTGTGGGTGAGTGGTTAGTTTGTGCTGATATGTCTCTT
 CTCTACTACTCTACTGCTTTGAGTACCGTTGGTTCAACAAAGGAATTGAAATGCACCAGCGATTGCAA
 ACATAGAAGGAAGTGGCTTACTACTTTGGGTTGGCTTGGCTTGGCTTCCCTCACAGCAATGCAATC
 CTCTACATTATCAGTGGCTGCCTCTTTTCTATCTGTTTCTTTTATTATCATCAGCGCAATGAAGCA
 AAGACTCTGGAAAAGCATATCTTTTCCAGTTGCGCCTCTTCTCTTGGTGGTCTTTTTAAGCAACAGAC
 TTTTCCACAAGACGGTCTACCTACAGTCGGCCCTGAGCAGCTCATCCTCCGAGAGAAATCCCTTCGCC
 ACATCCTTCTCCTGCCAAACTGAAAGCTGCTGCAGGCCAC

ACGGTACGGGCGCTCGAGCAGAAACTCATCTCAGAAGAGGATCTGGCAGCAATGATATCCTGGATT
 ACAAGGATGACGACGATAAGGTTTAA



[View online »](#)

Protein Sequence: >RR209112 representing NM_001025660
Red=Cloning site Green=Tags(s)

MADSVKTFQLDLGRGIKDSIWGICTISKLDARIQQKREEQRRRRASSLLAQRRRAQSVERKQESEPRIVSR
 IFQCCAWNGGVWFSLLLFYRVFIPVLQSVTARVIGDPSLHGDVWSWLEFFLTSIFSALWVLPFLVLSKV
 VNAIWFQDIADLAFEVSGRKPFPSPVSKIIADMLFNLLQALFLIQGMFVSLFPIHLVGLVSLHMSL
 LYSLYCFEYRWFNKGIEMHQRLSNIERNWPYYFGFGLPLAFLTAMQSSYIISGCLFSILFPLFIISANEA
 KTPGKAYLFQLRFLSLVFLSNRLFHKTVYLQSALSSSSSAEKFPSPHPSPAKLKAAGH

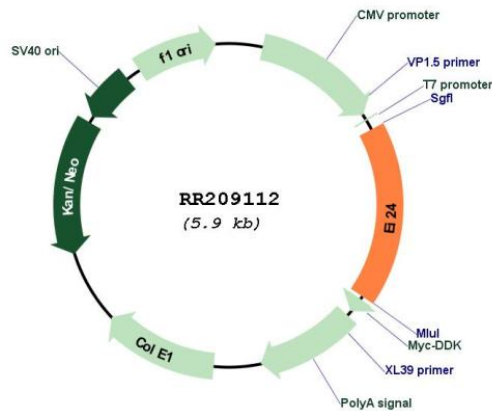
TRTRPLEQKLISEEDLAANDILDYKDDDDKV

Restriction Sites: SgfI-MluI

Cloning Scheme:



Plasmid Map:



ACCN: NM_001025660

ORF Size: 1020 bp

OTI Disclaimer:	The molecular sequence of this clone aligns with the gene accession number as a point of reference only. However, individual transcript sequences of the same gene can differ through naturally occurring variations (e.g. polymorphisms), each with its own valid existence. This clone is substantially in agreement with the reference, but a complete review of all prevailing variants is recommended prior to use. More info
OTI Annotation:	This clone was engineered to express the complete ORF with an expression tag. Expression varies depending on the nature of the gene.
Components:	The ORF clone is ion-exchange column purified and shipped in a 2D barcoded Matrix tube containing 10ug of transfection-ready, dried plasmid DNA (reconstitute with 100 ul of water).
Reconstitution Method:	<ol style="list-style-type: none">1. Centrifuge at 5,000xg for 5min.2. Carefully open the tube and add 100ul of sterile water to dissolve the DNA.3. Close the tube and incubate for 10 minutes at room temperature.4. Briefly vortex the tube and then do a quick spin (less than 5000xg) to concentrate the liquid at the bottom.5. Store the suspended plasmid at -20°C. The DNA is stable for at least one year from date of shipping when stored at -20°C.
RefSeq:	NM_001025660.1 , NP_001020831.1
RefSeq Size:	2115 bp
RefSeq ORF:	1023 bp
Locus ID:	300514
UniProt ID:	Q4KM77
Cytogenetics:	8q21
MW:	38.9 kDa
Gene Summary:	Acts as a negative growth regulator via p53-mediated apoptosis pathway. Regulates formation of degradative autolysosomes during autophagy.[UniProtKB/Swiss-Prot Function]