

Product datasheet for **RR209021**

Slc1a1 (NM_013032) Rat Tagged ORF Clone

Product data:

| | |
|--------------------|---|
| Product Type: | Expression Plasmids |
| Product Name: | Slc1a1 (NM_013032) Rat Tagged ORF Clone |
| Tag: | Myc-DDK |
| Symbol: | Slc1a1 |
| Synonyms: | Eaac1; Eaat3; REAAC1 |
| Vector: | pCMV6-Entry (PS100001) |
| E. coli Selection: | Kanamycin (25 ug/mL) |
| Cell Selection: | Neomycin |



[View online »](#)

ORF Nucleotide Sequence:

>RR209021 representing NM_013032
 Red=Cloning site Blue=ORF Green=Tags(s)

TTTTGTAATACGACTCACTATAGGGCGGCCGGAATTCGTCGACTGGATCCGGTACCGAGGAGATCTGCC
 GCC**CGCATCGCC**

ATGGGGAAGCCCACGAGCTCGGGATGCGACTGGCGCCGCTTCCTGCGGAATCACTGGCTGCTCTCCA
 CCGTGGCCGCGTGGTACTGGGCATCGTGGTAGGAGTCTTGTTTCGAGGACACAGTGAGCTCTCGAATCT
 GGATAAATTCTACTTTGCGTTTCTGGAGAAATCTGATGCGGATGCTGAAGCTCGTCATTCTGCCACTG
 ATTATATCCAGCATGATCACAGGTGTCGCTGCACTGGATTCCAACGTATCTGGAAAAATGGTCTTCGTG
 CTGTAGTATATTATTTCTCCACCACCGTCATTGCTGTAATCCTAGGTATTGTGTTAGTTGTGAGCATCAA
 GCCTGGTGTCACTCAGAAAGTGAATGAAATCAACAGGACAGGCAAAACCCCTGAAGTCAGCACTGTGGAC
 GCCATGTTGGATCTGATCAGGAACATGTTCCCTGAGAACCTGGTCCAAGCCTGTTTTCAGCAGTACAAAA
 CCAAGCGTGAAGAAGTGAAGCCTGCCAGTATCCTGGGGGAACCAGACAGAGGTGTCTGTACCACGGC
 CATGACAACAATGTCTGAGAACAAGACAAGGAATACAAAATCGTGGCCTGTACTCAGACGGCATCAAC
 GTCTGGGCTGATTATCTTCTGCTCTGCTTTGGACTTGTATTGGAAAAATGGGAGAAAAAGGGCAGA
 TTCTGGTGGATTTCTTCAATGCGTTGAGTGACGCCACCATGAAAAATCGTTCAGATCATCATGTGTTACAT
 GCCGATCGGATTTTTGTTCTTAATCGCTGGGAAGATCATAGAAGTTGAAGACTGGGAAATATTCCGCAAG
 TTGGGCCCTTATATGGCCACTGTCTGAGTGGGCTTGCAATCCACTCCCTCGTAGTGTGCCACTGATCT
 ATTTATAGTCGTGCGGAAGAACCCTTTCCGCTTTGCCTTGGGCATGGCGCAGGCTCTCCTGACAGCTCT
 CATGATCTCATCTAGCTCGGCAACCCTTCCAGTTACATTCCGCTGTGCGGAAGAAAAGAACCACGTGGAC
 AAGAGGATCACAAGATTTGTGCTGCCGTCGGCGCCACCATCAACATGGACGGCACTGCGCTCTATGAAG
 CCGTGGCAGCTGTGTTTCATTGCGCAGTGAACGGCATGGACCTGAGCATTGGGCAGATCATCAGCATCAG
 CATCACAGCCACCGCTGCTAGCATTGGAGCTGCCGGTGTGCCCCAGGCTGGCCTGGTGACCATGGTGATC
 GTGTTGAGTGCCGTGGGCTGCCTGCTGAGGACGTCAACCTCATCATTGCCGTCGACTGGCTCTGGACC
 GGTTTCAGGACCATGGTGAACGTTCTGGGTGATGCGTTTGGGACGGGCATCGTGGAGAAGCTGTCCAAGAA
 GGAGCTGGAGCAGGTGGATGTCTCCTCTGAAGTCAACATTGTGAACCCCTTTGCCTGGAGCCACAATC
 CTGGATAATGAAGACTCAGATACGAAGAAGTCTTACGTCAATGGGGCTTCTCGGTAGACAAATCTGACA
 CCATCTCGTTCCTCAGACCTCGCAGTTC

ACGCGTACGCGGCCGCTCGAGCAGAAACTCATCTCAGAAGAGGATCTGGCAGCAAATGATATCTGGATT
 ACAAGGATGACGACGATAAGGTTTAA

Protein Sequence:

>RR209021 representing NM_013032
 Red=Cloning site Green=Tags(s)

MGKPTSSGCDWRRFLRNHWLLLSTVAAVLVGIVVGVLRGHSLSNLDKIFYAFPGIILMRMLKLVILPL
 IISSMITGVAALDSNVSGKIGLRVVVYFSTTVIAVILGIVLVVSIKPGVTQKVNEINRTGKTPEVSTVD
 AMLDLIRNMFENLVQACFQYKTKREEVKPASDPGGNQTEVSVTTAMTTMSENKTHEYKIVGLYSDGIN
 VLGLIIFCLVFGLVIGMGEKGQILVDFFNALSDATMKIVQIIMCYMPIGILFLIAGKIIIEVEDWEIFRK
 LGLYMATVLSGLAIHSLVVLPLIYFIVVRKNPFRFALGMAQALLTALMISSSATLPVTFRCAGEEKNHVD
 KRITRFVLPVGATINMDGTALYEAVAVFIAQLNGMDLSIGQIITISITATAASIGAAAGVPQAGLVMTVI
 VLSAVGLPAEDVTLIIAVDWLLDRFRTMVNVLGDAFGTGIVEKLSKKELEQVDVSSEVNIIVNPFALPTI
 LDNEDSDTKKSYVNGGFSVDKSDTISFTQTSQF

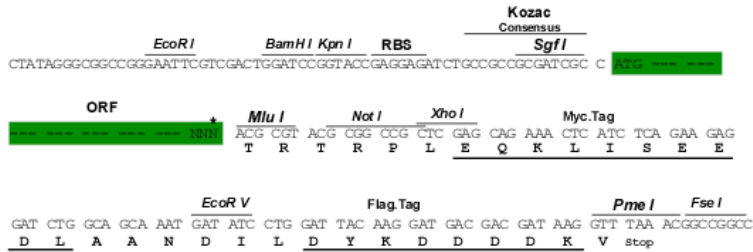
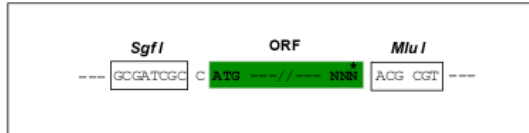
TRTRPLEQKLISEEDLAANDILDYKDDDDKV

Restriction Sites:

Sgfl-MluI

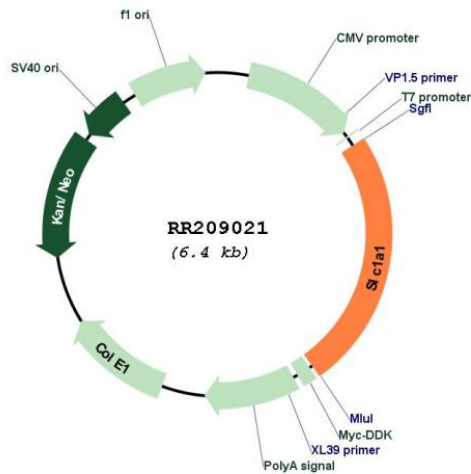
Cloning Scheme:

Cloning sites used for ORF Shutting:



* The last codon before the Stop codon of the ORF

Plasmid Map:



| | |
|-------------------------------|--|
| ACCN: | NM_013032 |
| ORF Size: | 1569 bp |
| OTI Disclaimer: | <p>Due to the inherent nature of this plasmid, standard methods to replicate additional amounts of DNA in E. coli are highly likely to result in mutations and/or rearrangements. Therefore, OriGene does not guarantee the capability to replicate this plasmid DNA. Additional amounts of DNA can be purchased from OriGene with batch-specific, full-sequence verification at a reduced cost. Please contact our customer care team at custsupport@origene.com or by calling 301.340.3188 option 3 for pricing and delivery.</p> <p>The molecular sequence of this clone aligns with the gene accession number as a point of reference only. However, individual transcript sequences of the same gene can differ through naturally occurring variations (e.g. polymorphisms), each with its own valid existence. This clone is substantially in agreement with the reference, but a complete review of all prevailing variants is recommended prior to use. More info</p> |
| OTI Annotation: | This clone was engineered to express the complete ORF with an expression tag. Expression varies depending on the nature of the gene. |
| Components: | The ORF clone is ion-exchange column purified and shipped in a 2D barcoded Matrix tube containing 10ug of transfection-ready, dried plasmid DNA (reconstitute with 100 ul of water). |
| Reconstitution Method: | <ol style="list-style-type: none"> 1. Centrifuge at 5,000xg for 5min. 2. Carefully open the tube and add 100ul of sterile water to dissolve the DNA. 3. Close the tube and incubate for 10 minutes at room temperature. 4. Briefly vortex the tube and then do a quick spin (less than 5000xg) to concentrate the liquid at the bottom. 5. Store the suspended plasmid at -20°C. The DNA is stable for at least one year from date of shipping when stored at -20°C. |
| RefSeq: | NM_013032.3 , NP_037164.3 |
| RefSeq Size: | 1821 bp |
| RefSeq ORF: | 1572 bp |
| Locus ID: | 25550 |
| UniProt ID: | P51907 |
| Cytogenetics: | 1q52 |
| MW: | 56.8 kDa |
| Gene Summary: | mediates sodium ion dependent high affinity glutamate transport and proton cotransport; plays a role in maintenance of neuronal function [RGD, Feb 2006] |