

## Product datasheet for **RR208992**

### Gna14 (NM\_001013151) Rat Tagged ORF Clone

#### Product data:

Product Type: Expression Plasmids  
 Product Name: Gna14 (NM\_001013151) Rat Tagged ORF Clone  
 Tag: Myc-DDK  
 Symbol: Gna14  
 Synonyms: Tieg3  
 Vector: pCMV6-Entry (PS100001)  
 E. coli Selection: Kanamycin (25 ug/mL)  
 Cell Selection: Neomycin  
 ORF Nucleotide Sequence: >RR208992 representing NM\_001013151  
 Red=Cloning site Blue=ORF Green=Tags(s)

TTTTGTAATACGACTCACTATAGGGCGCCGGAATTCGTCGACTGGATCCGGTACCGAGGAGATCTGCC  
 GCC**GCGATCGCC**

ATGGCCGGCTGCTGCTGTCTGTCTGCGGAGGAGAAAGAGTCGCAGCGCATCAGCGCGGAGATTGAACGGC  
 AACTTCGCGCGACAAGAAGGACGCGCGCCGCGAGCTCAAGCTGTTGTTGCTGGAACTGGTGAGAGTGG  
 GAAAAGCACCTTTATCAAGCAGATGAGGATAATCCACGGTCTGGCTACAGCGATGAAGATAGAAAGGGC  
 TTCACGAAGCTGGTTTACCAAAACATATTCACGGCCATGCAAGCCATGATCAGAGCAATGGACACCTGA  
 GGATACAATACACGTGTGAGCAGAATAAGGAAAATGCCAGATCATCAGAGAAGTGGAAAGTAGACAAAGT  
 CTCTGCGATCTCCAGAGACCAGGTGGCAGCCATCAAGCAGCTGTGGCTGGATCCGGGAATCCAGGAGTGT  
 TACGACAGGAGGAGGGAGTACCAGCTGTGAGACTCTGCCAAATATTACCTGACGGACATTGACCGAATTG  
 CCATGCCCTCTTTTCGTGCCAACGCAACAGGACGTACTTCGTGTTTCGAGTGCCTACCACTGGCATCATAGA  
 ATATCCATTTGACTTGGAGAACATCATCTCCGGATGGTGGATGTTGGTGGCCAGCGATCTGAACGACGG  
 AAATGGATTCAGTCTTTGAGAGCGTCACCTCCATCATTTCTTGGTTGCTCTGAGTGAATATGACCAGG  
 TTCTGGCTGAGTGTGACAATGAGAACCATGGAGGAGAGCAAAGCCCTGTTTAAAACATCATCACCTA  
 CCCCTGGTTTTTGAACCTCTGTGATTCTGTTCTTAAACAAGAAGGATCTTTTGGAAAGAGAAAATCATG  
 TACTCTCATCTAATCAGCTACTTCCCAGAGTACACAGGACCAAAGCAAGATGTCAAAGCTGCCAGGGACT  
 TTATCCTCAAGCTGTATCAAGACCAGAATCCTGACAAAGAGAAAAGTCACTACTCGCACTTCACGTGTGC  
 CACAGACACGGAGAACATCCGCTTCGTGTTTGTGCTGTCAAGGACACGATCCTGCAGCTGAACCTGCGG  
 GAGTTCAACTTGGTG

**ACGCGT**ACGCGGCCGCTCGAGCAGAAACTCATCTCAGAAGAGGATCTGGCAGCAAATGATATCCTGGATT  
 ACAAGGATGACGACGATAAGGTTTAA



[View online »](#)

**Protein Sequence:** >RR208992 representing NM\_001013151  
 Red=Cloning site Green=Tags(s)

MAGCCCLSAEEKESQRISAEIERQLRRDKKDARELKL LLLGTGESGKSTFIKQMRIIHGSGYSDERKG  
 FTKLVYQNI FTAMQAMIRAMDTLRIQYTCEQNKENAQIIREVEVDKVS AISRDQVA AIKQLWLDPGIQEC  
 YDRRREYQLSDSAKYLLTDIDRIAMP SFVPTQQDVL RVRVPTTGIIEY PFDLENIIFRMVDVGGQSRERR  
 KWIHCFESVTSIIIFLVALSEYDQVLAECDNENRMEESKALFKTIITYPWFLNSSVILFLNKKDLLEEKIM  
 YSHLISYFPEYTGPKQDVKAARDFILKLYQDQNPDK EKVIYSHFTCATDTENIRVFVA AVKDTILQLNLR  
 EFNLV

TRTRPLEQKLISEEDLAANDILDYKDDDDKV

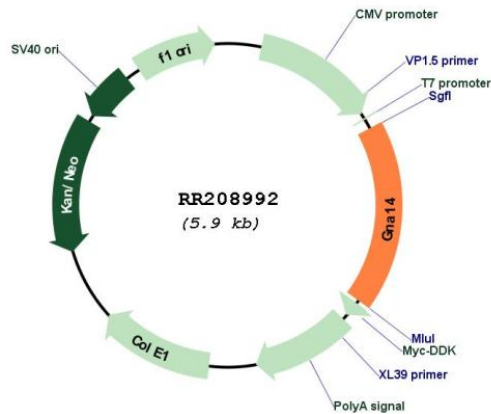
**Restriction Sites:**

SgfI-MluI

**Cloning Scheme:**



**Plasmid Map:**



**ACCN:** NM\_001013151

<b>ORF Size:</b>	1065 bp
<b>OTI Disclaimer:</b>	The molecular sequence of this clone aligns with the gene accession number as a point of reference only. However, individual transcript sequences of the same gene can differ through naturally occurring variations (e.g. polymorphisms), each with its own valid existence. This clone is substantially in agreement with the reference, but a complete review of all prevailing variants is recommended prior to use. <a href="#">More info</a>
<b>OTI Annotation:</b>	This clone was engineered to express the complete ORF with an expression tag. Expression varies depending on the nature of the gene.
<b>Components:</b>	The ORF clone is ion-exchange column purified and shipped in a 2D barcoded Matrix tube containing 10ug of transfection-ready, dried plasmid DNA (reconstitute with 100 ul of water).
<b>Reconstitution Method:</b>	<ol style="list-style-type: none"><li>1. Centrifuge at 5,000xg for 5min.</li><li>2. Carefully open the tube and add 100ul of sterile water to dissolve the DNA.</li><li>3. Close the tube and incubate for 10 minutes at room temperature.</li><li>4. Briefly vortex the tube and then do a quick spin (less than 5000xg) to concentrate the liquid at the bottom.</li><li>5. Store the suspended plasmid at -20°C. The DNA is stable for at least one year from date of shipping when stored at -20°C.</li></ol>
<b>RefSeq:</b>	<a href="#">NM_001013151.1</a> , <a href="#">NP_001013169.1</a>
<b>RefSeq Size:</b>	2761 bp
<b>RefSeq ORF:</b>	1068 bp
<b>Locus ID:</b>	309242
<b>Cytogenetics:</b>	1q43
<b>MW:</b>	41.4 kDa