

Product datasheet for **RR208966**

Ap1m2 (NM_001108996) Rat Tagged ORF Clone

Product data:

Product Type: Expression Plasmids
Product Name: Ap1m2 (NM_001108996) Rat Tagged ORF Clone
Tag: Myc-DDK
Symbol: Ap1m2
Synonyms: RGD1561490
Vector: pCMV6-Entry (PS100001)
E. coli Selection: Kanamycin (25 ug/mL)
Cell Selection: Neomycin
ORF Nucleotide Sequence: >RR208966 representing NM_001108996
Red=Cloning site Blue=ORF Green=Tags(s)

TTTTGTAATACGACTCACTATAGGGCGCCGGAATTCGTCGACTGGATCCGGTACCGAGGAGATCTGCC
GCC**CGGATCGCC**

ATGTGGCCTCGGCAGTCTTCATTCTGGACGTCAAGGGCAAGCCTCTGATTAGCCGAACTACAAAGGCG
ATGTGCCCATGACGGAGATTGACCACTTCATGCCTCTGCTTATGCAACGGGAGGAGGGTATGCTGGC
CCCCTGCTGAGCCACGGCCGAGTGCATCTTGTGGATCAAACACAGCAATCTCTACTTGGTGGCCACC
ACACTGAAGAACGCCAACGCCTCTCTGGTGTACTCCTTTCTGTACAAGACTGTGGAGGTCTCTGGCAGT
ACTTTAAGGAGCTGGAGGAGGAGAGCATCCGAGACAACCTTGTCAATTGTGTACGAGCTGTGGACGAGCT
GATGGACTTCGGCTTTCCGCAGACCACGGACAGCAAGATCCTGCAGGAGTACATCACACAGCAGGGCAAC
AAGCTGGAGACCGGCAAGTCTCGAGTGCCACCGACAGTACCAATGCTGTGTCTCTGGCGCTCCGAGGGCA
TCAAGTACAAAAGAACGAGGTCTTCATTGATGTCATCGAGTCTGTTAACCTTCTGGTGAATGCTAATGG
GAGTGTCTTGCTCAGCGAGATTGTGGGCACCATCAAGCTGAAGGTGTTTCTGTCTGGGATGCCAGAGCTG
CGGCTGGCCTCAATGACCGAGTGTCTTTGAGCTTACTGGCCGAGCAAGAACAAGTCTGTGGAGCTGG
AAGATGTGAAATTCCACCAGTGTGTGAGGCTTTCAGCTTCGACAACGACCGCACCATCTCCTTACATACC
CCCGATGGGACTTCGAACTCATGTCTACCGTCTCAGCACCCAGGTCAAACCTCTGATCTGGATCGAG
TCAGTCATTGAGAAATTCTCCACAGCCGAGTGGAGATCATGGTGAAGGCCAAGGGTCAAGTTAAGAAGC
AGTCGGTGGCCAACGGCGTGGAAATCTCTGTGCCTGTACCTAGCGATGCAGATTCTCCACGCTTCAAGAC
CAGTGTGGCAGTGCCAAGTATGTGCCTGAGAAGAATGTCGTCAATTTGGAGCATCAAGTCTTCCCTGGG
GGCAAGGAGTACTTGATGCGTGCCCATTTTGGCCTCCCCAGCGTGGAAACTGAGGAGGTAGAGGGCCGGC
CACCCATCGGTGTCAAGTTTGAATCCATACTTACTGTTTCCGGCATCCAGGTCGGTTACATGAAGAT
CATCGAGAAAAGCGGGTACCAGGCCCTGCCCTGGGTCGGTACATCACCCAGAGTGGTATTATCAACTT
CGGACCAGC

ACGCGTACGCGGCCGCTCGAGCAGAAACTCATCTCAGAAGAGGATCTGGCAGCAAATGATATCCTGGATT
ACAAGGATGACGACGATAAGGTTTAA



Protein Sequence: >RR208966 representing NM_001108996
Red=Cloning site Green=Tags(s)

MSASAVFILDVKGKPLISRNYKGDVPMTEIDHFMPLLMQREEEGMLAPLLSHGRVHFLWIKHSNLYLVAT
 TLKNANASLVYSFLYKTVEVFCEYFKELEESIRDNFVIYELLDELMDFGFPQTDSKILQEYITQQGN
 KLETGKSRVPPTVNAVSWRSEGIKYKNEVFIDVIESVNLNVANGSVLLSEIVGTIKLVFLSGMPEL
 RLGLNDRVLFELTGRSKNKSVELEDVKFHQCVRLSRFDNDRTISFIPPDGDFELMSYRLSTQVKPLIWE
 SVIEKFSHSRVEIMVKAKGQFKQSVANGVEISVPVPSDADSPRFKTSVGS AKYVPEKNVVIWSIKSFPG
 GKEYLMRAHFGLPSVETEEVEGRPPIGVKFEIPYFTVSGIQVRYMKIIEKSGYQALPWVRYITQSGDYQL
 RTS

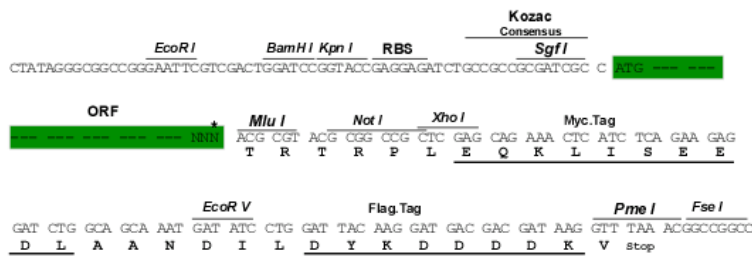
TRTRPLEQKLISEEDLAANDILDYKDDDDKV

Restriction Sites:

SgfI-MluI

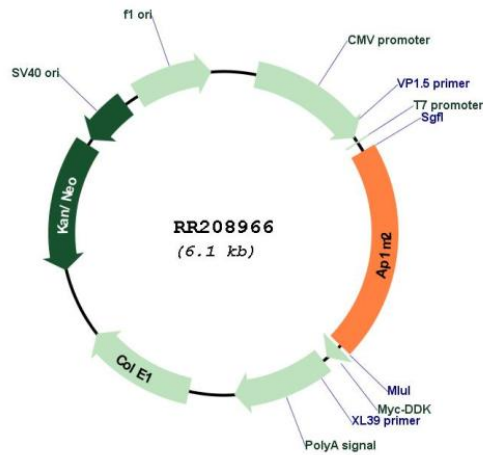
Cloning Scheme:

Cloning sites used for ORF Shuttling:



* The last codon before the Stop codon of the ORF

Plasmid Map:



ACCN:

NM_001108996

ORF Size:	1269 bp
OTI Disclaimer:	The molecular sequence of this clone aligns with the gene accession number as a point of reference only. However, individual transcript sequences of the same gene can differ through naturally occurring variations (e.g. polymorphisms), each with its own valid existence. This clone is substantially in agreement with the reference, but a complete review of all prevailing variants is recommended prior to use. More info
OTI Annotation:	This clone was engineered to express the complete ORF with an expression tag. Expression varies depending on the nature of the gene.
Components:	The ORF clone is ion-exchange column purified and shipped in a 2D barcoded Matrix tube containing 10ug of transfection-ready, dried plasmid DNA (reconstitute with 100 ul of water).
Reconstitution Method:	<ol style="list-style-type: none">1. Centrifuge at 5,000xg for 5min.2. Carefully open the tube and add 100ul of sterile water to dissolve the DNA.3. Close the tube and incubate for 10 minutes at room temperature.4. Briefly vortex the tube and then do a quick spin (less than 5000xg) to concentrate the liquid at the bottom.5. Store the suspended plasmid at -20°C. The DNA is stable for at least one year from date of shipping when stored at -20°C.
RefSeq:	NM_001108996.2 , NP_001102466.1
RefSeq Size:	1717 bp
RefSeq ORF:	1272 bp
Locus ID:	367038
Cytogenetics:	8q13
MW:	48.2 kDa