

Product datasheet for **RR208936**

Pola2 (NM_053480) Rat Tagged ORF Clone

Product data:

Product Type:	Expression Plasmids
Product Name:	Pola2 (NM_053480) Rat Tagged ORF Clone
Tag:	Myc-DDK
Symbol:	Pola2
Vector:	pCMV6-Entry (PS100001)
E. coli Selection:	Kanamycin (25 ug/mL)
Cell Selection:	Neomycin



[View online »](#)

ORF Nucleotide Sequence:

>RR208936 representing NM_053480
 Red=Cloning site Blue=ORF Green=Tags(s)

TTTTGTAATACGACTCACTATAGGGCGGCCGGAATTCGTCGACTGGATCCGGTACCGAGGAGATCTGCC
 GCC**GCGATCGCC**

ATGGCCGTGTCCACCCAGCAGCTGGCGGAGGAGCTACAGATCTTCGGCCTGGACTGCGAGGACTCCCTGC
 TGGAGAAATTGGCAGAGCTGTGTACTCTGTACCGACAGACTGAGGAGAGGATGGTGAGCGAGCTGATCGC
 CTTCTGCACCAGCGCAGGAAATCGTGCCTCACTGGAGAGATCCTCAGTTCCTTTGAGCAGGAGTTCTG
 AACAAAAAGCTCTCAAAGCCTGTACAGTGCCTCAAAGACAACAGGCACGCAGGAGCCAGAGATATTG
 TCTCCATAACAAGACTAATTGAAGCAGAGGAGGAAGAGGAGACCTTCTGAGCGTTACACCACACCCTC
 TAAGGGTCTCACAAGCGAGTTAGCAGCACCCAGAAACCCCTAACCAAAAGGAGTATCTCTACTCGC
 AGCCACACCAGTTCTCTCCCATCGAGTTTCTCCCAAGTGTACCCCTTCCAGAAATACAGCTCCA
 GAACCAACCGGGAGAAGTGGTACCACCTTTGGCTCAGCACAGGGCGTGTCTTGGTCCGGGAGAGGAGG
 CTCTGGAAGCATCAGTCTGAAGTTCATGGGTACCCAGAACCCTCACCAGCAGTATAAACTATGTTT
 CAGCAGCTCCCGATATTCGGAAGTTCGACCTGAAGATAGAGGAGCTTGGCAGCGAGCTGAAGGAAC
 ATTACAAGATCGAGGCGTTTACCCTCTGCTAGTCCCAGCACAGGAACCTGTCATCTGCTGGGTAGAT
 TGGCTGTGACAGCAACGGGAGGCTAAACAGCAAGTCAAGTATCCTCGAGGGAGACCGGGAGCACTCCTCT
 GCGCTCAGATTCAGTGGACATGTCCGAACCAAGACTACTCTCTGTTTCTGGGCGAGTTGTAATTA
 TGGAAGGATCAACACCACTGGCAGGAGACTTACTGCCACCAACTCTATGAGGGTGTGCCACTTCCGTT
 CTATCAGCCACTGAAGAGGAGGAGATTTTGGCAGACTATGGTGTAGTTGCCTGTGGCCTTATACC
 ACCTCTGACAGCATCACATACGACCCCTGCTTGTATCTGATCAGCACCATCAACCATGACCGGCTAGATG
 TCTGCATCTGTTCCGGCCTTCTGGATGCTAAGCATGAACAAGTGGAGAAGTGAAGTTGACAAGCCC
 ATTCGAAGACATTTTCAAGCAGTGCCTGAGAACAGTTATCGAAGGAACGAGAAGCTCCGGCTCCACCTT
 GTCTTTGTCCCGTCTCTGAGGATGTGCACCACGAGCCAGTCTACCCACAGCCACCTTTACCTTCTCCG
 AACTGCCTCGAGAGGACAAGAAGCGAGTGCAGTTTGTGTCAGAGCCCTGCAACTCTCCATAAATGGGGT
 GATGTTTGGTTTACATCCACGGACCTGCTGTTCCACATTGGGGCCGAGGAGATCTGTAGCTCCTCTGGG
 ACTTCAGACAGATTACGCCGAATCCTCAAGCACATCCTGACGCAGAGAAGCTACTACCCACTTTACCCAC
 CCCACGAGGACATGGCCATAGACTACGAGAACTTCTATACCTATGCCAGCTGCCGTCACCCCTGATGT
 TTTCATAGTGCCATCAGAGCTGAGTACTTCGTGAAGGACATCTCGGCTGTGTCTGTATGAATCCTGGA
 CGGCTACCAAAGGACAAGTGGCGGCACCTTTGGCCCTCTACCTCAGGAGGCAGCCCAAGGGCACGG
 ACAGTGAGGGGAGGCAGGGCTGAGTGTGGCTGCCAGGTGGTCAGAATC

ACGCGTACGCGGCCGCTCGAGCAGAAACTCATCTCAGAAGAGGATCTGGCAGCAAATGATATCCTGGATT
 ACAAGGATGACGACGATAAGGTTTAA

Protein Sequence:

>RR208936 representing NM_053480
 Red=Cloning site Green=Tags(s)

MAVSTQQLAEELQIFGLDCEDSLLEKLAELCTLYRQTEERMVSELIAFCTSAGKSCLTGEILSSFEEHVL
 NKKLSKACHSASKDNRHAGARDIVSIQELIEAEETLLSAYTTPSKGPHKRVSSPTPLTKRSISTR
 SPHQLLSPSSFSPSATPSQKYSSRTNRGEVVTTFGSAQGVSWSGRGGSGSISLKVMGYPEPLTSSYKTMF
 QQLPDIREVLTKIEELGSELKEHYKIEAFTPLLVAQEPVILLGQIGCDNSGRLNSKSVILEGDREHSS
 GAQIPVDMSELKDYSLFPQVVIMEGFNTRRLTATKLYEGVPLPFYQPTTEEGDFEQTMVLVACGPYT
 TSDSITYDPLLDLISTINHDLVDCILFGPFLDAKHEQVENCKLTSFEDIFKQLRTVIEGTRSSGSHL
 VFVPSLRDVHHEPVYPQPPFTFSELPREDKRVQFVSEPCNLSINGVMFGLTSTDLLFHIGAEIEICSSSG
 TSDRFSRILKHILTQRSYYPLYPHEDMAIDYENFYTAQLPVTPDVFI VPSLELYFVKDIFGCVCMPNG
 RLTKGVGGTFGRLYLRRQPKGTDEGRQGLSVAAQVVR I

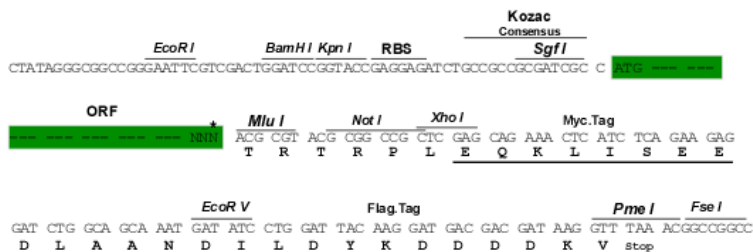
TRTRPLEQKLISEEDLAANDILDYKDDDDKV

Restriction Sites:

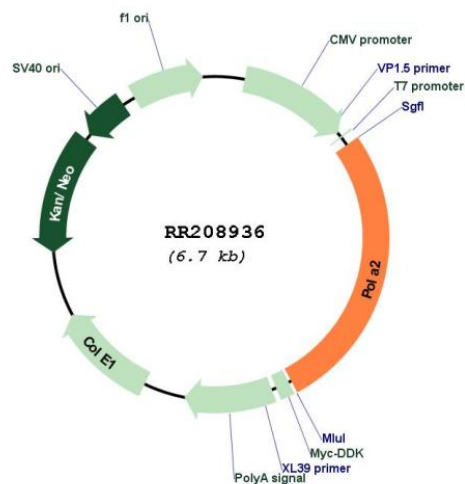
Sgfl-MluI

Cloning Scheme:

Cloning sites used for ORF Shutting:



* The last codon before the Stop codon of the ORF

Plasmid Map:

ACCN:

NM_053480

ORF Size:	1800 bp
OTI Disclaimer:	The molecular sequence of this clone aligns with the gene accession number as a point of reference only. However, individual transcript sequences of the same gene can differ through naturally occurring variations (e.g. polymorphisms), each with its own valid existence. This clone is substantially in agreement with the reference, but a complete review of all prevailing variants is recommended prior to use. More info
OTI Annotation:	This clone was engineered to express the complete ORF with an expression tag. Expression varies depending on the nature of the gene.
Components:	The ORF clone is ion-exchange column purified and shipped in a 2D barcoded Matrix tube containing 10ug of transfection-ready, dried plasmid DNA (reconstitute with 100 ul of water).
Reconstitution Method:	<ol style="list-style-type: none">1. Centrifuge at 5,000xg for 5min.2. Carefully open the tube and add 100ul of sterile water to dissolve the DNA.3. Close the tube and incubate for 10 minutes at room temperature.4. Briefly vortex the tube and then do a quick spin (less than 5000xg) to concentrate the liquid at the bottom.5. Store the suspended plasmid at -20°C. The DNA is stable for at least one year from date of shipping when stored at -20°C.
RefSeq:	NM_053480.2 , NP_445932.2
RefSeq Size:	2294 bp
RefSeq ORF:	1803 bp
Locus ID:	85242
Cytogenetics:	1q43
MW:	66.7 kDa
Gene Summary:	plays a role in DNA replication [RGD, Feb 2006]