

Product datasheet for **RR208923**

Pygo2 (NM_001106447) Rat Tagged ORF Clone

Product data:

Product Type: Expression Plasmids
Product Name: Pygo2 (NM_001106447) Rat Tagged ORF Clone
Tag: Myc-DDK
Symbol: Pygo2
Synonyms: RGD1308535
Mammalian Cell Selection: Neomycin
Vector: pCMV6-Entry (PS100001)
E. coli Selection: Kanamycin (25 ug/mL)
ORF Nucleotide Sequence: >RR208923 representing NM_001106447
 Red=Cloning site Blue=ORF Green=Tags(s)

TTTTGTAATACGACTCACTATAGGGCGGCCGGAATTCGTCGACTGGATCCGGTACCGAGGAGATCTGCC
 GCC**CGATCGCC**

ATGGCCGCTCGGCGCCGCCACCGGACAAGCTGGAGGGAGGCAGCGCCCGCACCACCCCGCGC
 CGCCAGCACCGGGAGGAAGCAGGGCAAGGCCGCTGCAAAATGAAGAGCCCTGAAAAGAAGCGAAGAAA
 GTCCAATACTCAGGGTCTGCATACTCACATCTGACGGAGTTCGTCACCCCGACCCCATGGTGGAT
 CATCTGGTCGCTTCTAACCTTTTGAGGATGACTTCGGAGCCCTAAGATGGGGGTGCGGGCCCTCCGT
 TCCTTGGCAGTCTGTACCCTTTGGAGGCTTTCGTGTACAGGGGGCATGGCAGGCCAGGTCCCCCAGG
 CTATGGCACTGGAGGAGGAGGGGTCCCCAGCCGCTTCGTAGGCAGCCACCTCCTTTTCTCCCAACCCT
 ATGGGTCCAGCTTTAATATGCCTCCTCAGGGCCCTGGCTATCCGCCCCAGGCAATATGAACCTTTCCCA
 GTCAGCCCTTCAACCAGTCTCTGGGCCAAAACCTTAGTCCACCTGGTGGGCAAAATGATACCAGGCCCGGT
 GGGGGATTTGGTCCCATGATCTCACCCACCATGGGGCAGCCCTAGAGGCGAGCTCGGTCTCTCTCT
 CTCCCCAACGCTTTACCCAACCAGGAGCACCTTTGGTCTTCTTTCAGAGACCTGGTCAGGGACTCC
 CCAGCTGCCTCCCAACACAAGTCCCTCCCTGGTCCAGACCTGGTTTTCTGGCCCTGGTGGTGAAGA
 TGGTGGAAAGCCCTTGAATCCACCCGCCCCACTGCTTTTCCCCAGGAGCCCACTCAGGCTCCCCAGCT
 GCTGCTGTTAATGGGAATCAGCCAGTTTCCCCCTAGCAGCAGCGGTCGAGGTGGGGCACTCCAGATG
 CCAACAGTCTGGCACCTCCAGGCAAGGCAGGTGGAGGCTCAGGGCCCAAGCCTCCCCGGGCTGGTGTA
 CCCTTGGCGTGCCTGTGCGAGCGAGGTGAATGATGACCAGGATGCCATTTTGTGTGAGGCCCTCTGCCAG
 AAGTGGTTTACCGTGAGTGACCCGCATGACCGAGAGTGCCTACGGCCTGCTGACCACCGAGGCCCTCTG
 CCGTCTGGGCTGTGATCTCTGCCTCAAGACCAAGGAGATCCAATCCGTCTACATCCGTGAGGGCATGGG
 CCAGTTGGTGGCTGCCAACGATGGG

ACGCGTACGCGGCCGCTCGAGCAGAAAACCTCATCTCAGAAGAGGATCTGGCAGCAAAATGATATCTGGATT
 ACAAGGATGACGACGATAAGGTTTAA



[View online >](#)

Protein Sequence: >RR208923 representing NM_001106447
 Red=Cloning site Green=Tags(s)

MAASAPPPDKLEGGSGPAPPAPPSTGRKQKAGLQMKSPKKRRKSNQGPAYSHLTEFAPPPTMVD
 HLVASNPFEDDFGAPKMGAGPPFLGSPVFFGGFRVQGGMAGQVPPGYGTGGGGPQPLRRQPPFPNP
 MGFAPNMPPQGGYPPPGNMNFPSPQFNQSLGQNFSPGGQMIPGVPVGGFGPMISPTMGQPPRGELGPPP
 LPQRFQTQPGAPFQPSLQRPQGLPSLPPNTSPFPGDPGFPGGGEDGGKPLNPPAPTAFQEPHSGSPA
 AAVNGNQPSFPPSSSRGGGTPDANSLAPPKAGGSGPQPPGLVYPCGACRSEVNDQDAILCEASCQ
 KWFHRECTGMTESAYGLLTTEASAVWACDLCLKTKEIQSVYIREGMGQLVAANDG

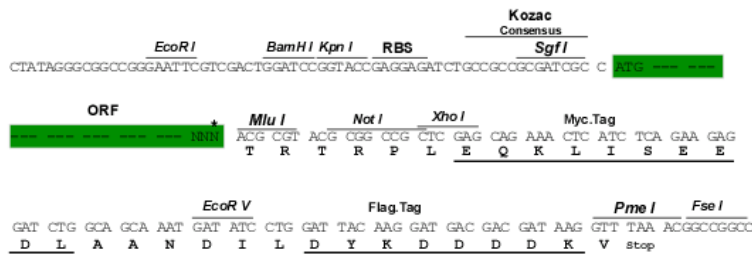
TRTRPLEQKLISEEDLAANDILDYKDDDDKV

Restriction Sites:

Sgfl-MluI

Cloning Scheme:

Cloning sites used for ORF Shuttling:



* The last codon before the Stop codon of the ORF

ACCN: NM_001106447

ORF Size: 1215 bp

OTI Disclaimer: The molecular sequence of this clone aligns with the gene accession number as a point of reference only. However, individual transcript sequences of the same gene can differ through naturally occurring variations (e.g. polymorphisms), each with its own valid existence. This clone is substantially in agreement with the reference, but a complete review of all prevailing variants is recommended prior to use. [More info](#)

OTI Annotation: This clone was engineered to express the complete ORF with an expression tag. Expression varies depending on the nature of the gene.

Components: The ORF clone is ion-exchange column purified and shipped in a 2D barcoded Matrix tube containing 10ug of transfection-ready, dried plasmid DNA (reconstitute with 100 ul of water).

Reconstitution Method:

1. Centrifuge at 5,000xg for 5min.
2. Carefully open the tube and add 100ul of sterile water to dissolve the DNA.
3. Close the tube and incubate for 10 minutes at room temperature.
4. Briefly vortex the tube and then do a quick spin (less than 5000xg) to concentrate the liquid at the bottom.
5. Store the suspended plasmid at -20°C. The DNA is stable for at least one year from date of shipping when stored at -20°C.

RefSeq: NM_001106447.1, NP_001099917.1

RefSeq Size: 2849 bp

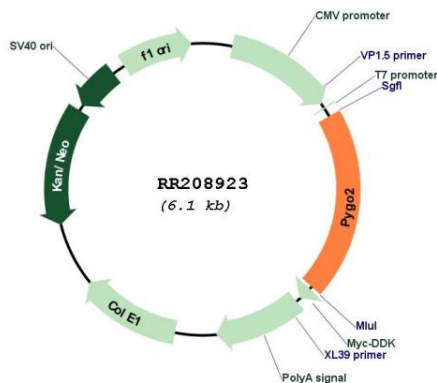
RefSeq ORF: 1218 bp

Locus ID: 295251

Cytogenetics: 2q34

MW: 41.1 kDa

Product images:



Circular map for RR208923