

Product datasheet for **RR208881**

Hadha (NM_130826) Rat Tagged ORF Clone

Product data:

Product Type:	Expression Plasmids
Product Name:	Hadha (NM_130826) Rat Tagged ORF Clone
Tag:	Myc-DDK
Symbol:	Hadha
Synonyms:	RGD1560655
Vector:	pCMV6-Entry (PS100001)
E. coli Selection:	Kanamycin (25 ug/mL)
Cell Selection:	Neomycin



[View online »](#)

ORF Nucleotide Sequence:

>RR208881 representing NM_130826
 Red=Cloning site Blue=ORF Green=Tags(s)

TTTTGTAATACGACTCACTATAGGGCGGCCGGGAATTCGTCGACTGGATCCGGTACCGAGGAGATCTGCC
 GCC**CGCATCGCC**

ATGGTGGCGTCCCAGGCAATTGGCAGTCTCAGTCGCTTCTCGCTTCAGGATCCTGCGCTCCAGAGGCT
 GCATTTGCCACAGCTTTACAACCTCTTCTGCTTTGCTGTCTAGAACCATATTAATTATGGAGTCAAAGG
 GGATGTGGCAGTTATTCCGATTAACCTCGCCCAATTCAAAGGTAATAACATTGAATAAAGAAGTACAATCA
 GAGTTCGTAGAAGTAATGAACGAAATCTGGGCCAACGACCAAATCAGGAGCGCCGCTCTTATTTCTGCAA
 AGCCTGGCTGCTTTGTTGCAGGTGCTGACATCAACATGCTGGCCTCTGTACAACCCCCAAGAAGCAGC
 ACGAATATCACAAGAAGGACAGAAAATGTTTGAGAACTGAAAAGTCACCAAAGCCTGTTGTTGCCGCC
 ATCAGTGGATCCTGCTTGGGAGGCGGACTTGAGCTTGCCATAGCATGTCAATACAGAATAGCAACAAAAG
 ACAGAAAAACAGTATTAGGTGCCCTGAAGTGTGCTGGGAATCTTACCAGGAGCCGGAGGTACCCAGAG
 GCTGCCAAAATGGTGGGTGTGCTGCTGCTTTTGACATGATGCTGACTGGTAGGAACATTCGTGCAGAC
 AGAGCAAAGAAAATGGGACTGGTTGACCAGTTGGTGGACCCGCTAGGACCAGGAATAAAATCTCCAGAGG
 AAAGGACAATTGAATACCTAGAAGAAGTTGCAGTTAATTTTGCCAAAGGCTGGCTGACAGGAAGGTCTC
 TGCAAAGCAGAGCAAAGGCTGATGAAAAGCTGACATCGTATGCCATGACTATCCCATTGTGACAGCAA
 CAGGTTTACAAAACAGTGAAGAAGAAAGTGAAGAAGCAGACCAAAGGCCTTTACCTGCACCTTTGAAGA
 TAATTGACGCTGTGAAGACTGGACTTGAGCAAGGAAATGATGCTGGCTATCTTGCCGAATCAGAGAAAT
 TGGAGAGCTTGCATTGACCAAAGAATCAAAGCCCTGATGGGGCTTTAATGGCCAGGTCTGTGCAAG
 AAAATAAATTTGGAGCGCCACAGAAGACTGTTGAGCAGCTAGCCATCCTTGGCGCAGGGCTGATGGGGG
 CTGGCATTGCCAGGTCTCTGTGGACAAGGACTGAAAACCTTTCTTAAAGACACTACAGTGACAGGGCT
 GGGCCGGGACAGCAACAAGTGTTCAAAGGACTGAATGACAAGGTAAGAAGAAGGCACTCACATCCTTC
 GAAAGGGACTCCATCTTACGCAACCTGATCGGGCAGCTCGACTACAAGGGCTTCGAGAAGCTGACATGG
 TGATTGAGGCTGTCTTCGAGGACCTCGCTGTTAAGCACAAAGTGTAAAGGAAGTGGAAAGCGTGACTCC
 AGAACACTGTATCTTCGCCAGCAACACATCTGCTCTCCAATCAATCAAATTTGCTGCTGTGAGCCAAAGG
 CCTGAGAAGGTGATCGGCATGCACTACTTCTCCTGTGGACAAGATGCAGCTTCTAGAGATCATCACAA
 CTGACAAAACCTCCAAGGACACCACAGCGTCTGCCGTGGCCGTGGGTCTCAAGCAGGGGAAGGTCATCAT
 TGTGGTCAAGGACGGACCTGGCTTCTACACCACAGGTGTCTTGCTCCCATGATGTCAGAAGTCATAAGA
 ATCCTCCAGGAAGGAGTTGACCCTAAGAAGCTGGACGCCTTGACCACAGGCTTCGGCTTCCCTGTGGGTG
 CTGCCACCCTGGCAGATGAAGTAGGGATAGATGTAGCACAGCACGTAGCAGAAGATCTAGGCAAAGCCTT
 CGGGGAGCGGTTTGGAGGTGGCAGCGTAGAACTGCTGAAACTGATGGTCTCCAAGGGCTTCTTGGGTGCG
 AAGTCTGGGAAGGGCTTCTACATCTATCAGTCGGGCTCAAAGAATAAGAATTTGAATTTGAAATAGATA
 ATATCTTGGTAAACCTGAGGCTGCCTGCCAAGCCCGAGGTCTCCTCTGATGAAGACATCCAGTACCGTGT
 GATAACAAGGTTTGTGAATGAGGCGATCCTGTGCCTACAGGAAGGGATCCTAGCCACGCCTGAAGAGGGA
 GACATCGGAGCAGTCTTTGGGCTTGGCTTTCCCCCTTGTCTCGGAGGGCCCTTCCGCTTTGTGGATCTGT
 ATGGTGTCTCAGAAGGTAGTGACCGGCTCCGGAAGTATGAGTCTGCCTATGGGACACAGTTTACCCCGTG
 TCAGCTACTCCGCGACCTTGCTAACAACCTTAGCAAGAAGTTCTACCAAG

ACGCGTACGCGGCCGCTCGAGCAGAAAACCTCATCTCAGAAGAGGATCTGGCAGCAAATGATATCCTGGATT
 ACAAGGATGACGACGATAAGGTTTAA

Protein Sequence: >RR208881 representing NM_130826
 Red=Cloning site Green=Tags(s)

MVASRAIGSLSRFSAFRILRSRGCICHSFTTSSALLSRTHINYGKGDVAVIRINSPNSKVNTLNKEVQS
 EFVEVMNEIWANDQIRSAVLISSKPGCFVAGADINMLASCTTPQEAAARISQEQKMFLEKLEKSPKPVVAA
 ISGSLGGGLELAIACQYRIATKDRKTVLGVPEVLLGILPGAGGTQRLPKMVGVPAAFDMMLTGRNIRAD
 RAKKMGLVDQLVDPLGPGIKSPEERTIEYLEEVAVNFAKGLADRKVSQKSKGLMEKLT SYAMTIPFVRQ
 QVYKTVEEKVKKQTKGLYPAPLKIIDAVKGTGLEQNDAGYLAESEKFGELALTKESKALMGLYNGQVLCK
 KNKFGAPQKTVQQLAILGAGLMGAGIAQVSVDKGLKTLKDDTTVTGLGRGQQQVFKGLNDKVKKKALTSF
 ERDSIFSNLIGQLDYKGFADKADMVIEAVFEDLAVKHKVLKEVESVTPHECIFASNTSALPINQIAAVSQR
 PEKIVGMHYFSPVDMQMLEIITTDKTSKDTTASAVAVGLKQGVIIIVKDGPGFYTRCLAPMMSEVIR
 ILQEGVDPKLLDALTTGFGFPVGAATLADEVGIDVAQHVADLQKAFGERFSGGSVELLKLMSKGLFGR
 KSGKGFYIYQSGSKNKNLSEIDNILVNLRLPAKPEVSSDEDIQYRVITRFVNEAVLCLQEGILATPEEG
 DIGAVFGLGFPCLGGPFRFVDLYGAQKVVDRLRKYESAYGTQFPCQLLRDLANNSSKKFYQ

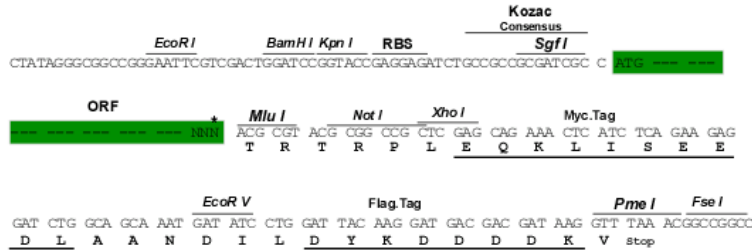
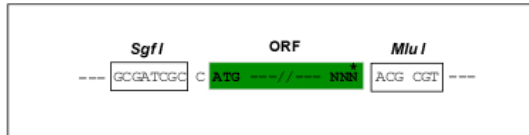
TRTRPLEQKLISEEDLAANDILDYKDDDDKV

Restriction Sites:

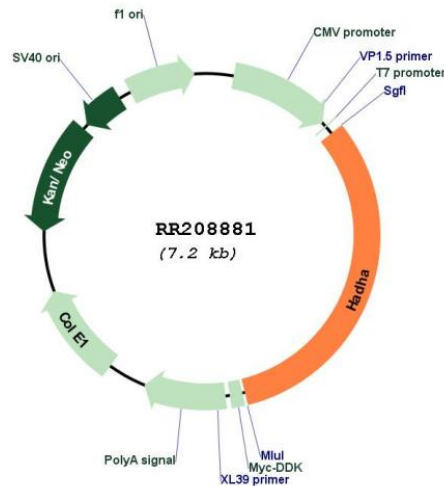
Sgfl-MluI

Cloning Scheme:

Cloning sites used for ORF Shuttling:



* The last codon before the Stop codon of the ORF

Plasmid Map:


ACCN: NM_130826

ORF Size: 2289 bp

OTI Disclaimer: The molecular sequence of this clone aligns with the gene accession number as a point of reference only. However, individual transcript sequences of the same gene can differ through naturally occurring variations (e.g. polymorphisms), each with its own valid existence. This clone is substantially in agreement with the reference, but a complete review of all prevailing variants is recommended prior to use. [More info](#)

OTI Annotation: This clone was engineered to express the complete ORF with an expression tag. Expression varies depending on the nature of the gene.

Components: The ORF clone is ion-exchange column purified and shipped in a 2D barcoded Matrix tube containing 10ug of transfection-ready, dried plasmid DNA (reconstitute with 100 ul of water).

Reconstitution Method:

1. Centrifuge at 5,000xg for 5min.
2. Carefully open the tube and add 100ul of sterile water to dissolve the DNA.
3. Close the tube and incubate for 10 minutes at room temperature.
4. Briefly vortex the tube and then do a quick spin (less than 5000xg) to concentrate the liquid at the bottom.
5. Store the suspended plasmid at -20°C. The DNA is stable for at least one year from date of shipping when stored at -20°C.

RefSeq: [NM_130826.2](#), [NP_570839.2](#)

RefSeq Size: 2560 bp

RefSeq ORF: 2292 bp

Locus ID: 170670

UniProt ID: [Q64428](#)
Cytogenetics: 6q14
MW: 82.7 kDa
Gene Summary: alpha subunit of the liver mitochondrial fatty acid oxidation multienzyme complex [RGD, Feb 2006]