

## Product datasheet for **RR208852**

### **Ddx47 (NM\_001015005) Rat Tagged ORF Clone**

#### **Product data:**

|                    |   |
|--------------------|---|
| Product Type:      | Expression Plasmids                       |
| Product Name:      | Ddx47 (NM_001015005) Rat Tagged ORF Clone |
| Tag:               | Myc-DDK                                   |
| Symbol:            | Ddx47                                     |
| Synonyms:          | MGC105650                                 |
| Vector:            | pCMV6-Entry (PS100001)                    |
| E. coli Selection: | Kanamycin (25 ug/mL)                      |
| Cell Selection:    | Neomycin                                  |



[View online »](#)

**ORF Nucleotide Sequence:**

>RR208852 representing NM\_001015005  
 Red=Cloning site Blue=ORF Green=Tags(s)

TTTTGTAATACGACTCACTATAGGGCGGCCGGAATTCGTCGACTGGATCCGGTACCGAGGAGATCTGCC  
 GCC**CGATCGCC**

ATGGCGCAGACGAGGAACCCGATTCCCCACAGAAGCCCTTCAGACAGCTGCAGAAGAGGAGGAAACGA  
 AAACATTTAAGGACCTGGGTGTGACCGATGACTGTGTGAAGCTTGTGACCAGTTGGGGTGGCAAAGCC  
 CACCAAGATCCAGATTGAAGCTATTCCTTTGGCCTTGCAAGTCTGTGATATTATTGGGTTGGCAGAAACG  
 GGATCTGGAAAAACAGGTGCTTTTGCTTTGCCATTCTGAATGCACTGCTGGAGACTCCCCAGCGTTTGT  
 TTGCCCTGGTCTCACCCCTACTCGAGAGTTGGCCTTTCAGATCTCTGAACAGTTCGAGGCCCTGGGGTC  
 ATCTATTGGAGTACAGTGTGCTGCTCATTGTTGGTGAATTGATTCGATGTCTCAGTCACTAGCGTTGGCC  
 AAAAAACCATATAGTAATAGCTACTCTGGCCGACTGATTGACCATTGGAAAATACCAAAGGCTTCA  
 ACTTAAGAGCTCTTAAGTACTTGGTCATGGATGAAGCAGACCGGATACTGAACATGGATTTTGAGACAGA  
 GGTTGACAAGATCCTCAAAGTATCCCGAGATCGGAAAACATTTCTCTTTTCTGCTACCATGACCAAG  
 AAGGTGCAAAAATTCAGCGTGCAGCTCTCAAGAACCCTGTGAAGTGCCTGTTTCTCTAAGTACCAGA  
 CTGTTGAGAAACTGCAGCAGTATTACCTTTTCATTCCCTCTAAATTCAAGGACACCTACCTGGTTTATAT  
 TCTCAATGAGCTGGCCGCAACTCCTTCATGATATTCTGTAGCACCTGTAACAACACTCAGAGAACGCA  
 TTGCTGCTTCGCAATCTCGGGTTCACGGCCATCCCCCTCCATGGGCAGATGAGTCAGAGCAAGCGCCTTG  
 GATCCCTTAATAAGTTTAAAGCTAAGGCGAGGTCCATTCTCTAGCGACTGATGTGGCCAGCAGAGGTCT  
 GGACATACCCCATGTGGATGTAGTAGTCAATTTGACATTCGACTCATTCTAAGGATTATATCCATCGA  
 GTAGGACGAACTGCGAGAGCTGGGCGCTCTGGGAAGGCCATTACCTTTGTAACACAGTATGATGTGGAAC  
 TCTCCAGCGCATCGAGCACCTAATTGGGAAGAAACTGCCTGTCTTTCCAACGCAGGATGAGGAGTTCAT  
 GATGCTCACAGAGCGTGTGAGCGAAGCCAGAGATTTGCCCGAATGGAGTTAAGGGAACATGGAGAAAAG  
 AAGAAACGCAAGCGAGAGACCCAGGAGATGATGATGATACCGAGGGCGCTATTGGTGTGAGGAACAAG  
 TGGCTGGGGGAAAATGAAGAAGCGAAAGGCCGC

**ACGCGT**ACGCGGCCGCTCGAGCAGAAACTCATCTCAGAAGAGGATCTGGCAGCAAATGATATCCTGGATT  
 ACAAGGATGACGACGATAAGGTTTAA

**Protein Sequence:**

>RR208852 representing NM\_001015005  
 Red=Cloning site Green=Tags(s)

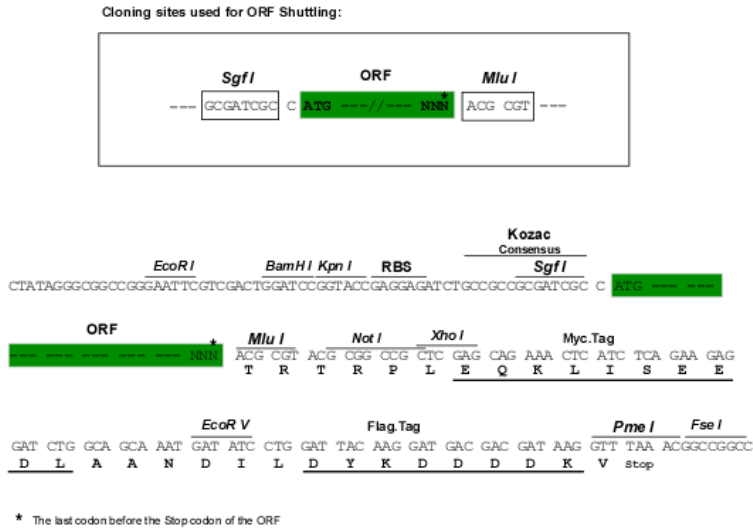
MAADEEPDSPTEALQTAEEEEETKFKDLGVTDVLC EACDQLGWAKPTKIQIEAIPALQGRDIIGLAET  
 GSGKTGAFALPILNALLETPQRLFALVLTPTRELA FQISEQFEALGSSIGVQCAVIVGGIDSMSQSLALA  
 KKP HIVIATPGRLIDHLENTKGFNL RALKYLV MDEADRILNMDFETEVDKILKVIPRDRKTF LFSATMTK  
 KVQKLQRAALKNPVKCAVSSKYQTVEKLQYYL FIPSKFKDTYL VYILNELAGNSFMIFCSTCNNTQRTA  
 LLLRNLGFTAIPLHGQMSQSKRLGSLNKF KAKARSILLATDVASRGLDIPHDVVVNFDIPTHSKDYIHR  
 VGR TARAGRSKAITFVTQYDVELFQRIEHL IGKLPVFPTQDEEVMML TERVSEAQR FARMELREHGEK  
 KKRKREDPGDDDDTEGAIGVRNKVAGGKM KKRKGR

**TR**TRPLEQKLI SEEDLAANDILDYKDDDDKV

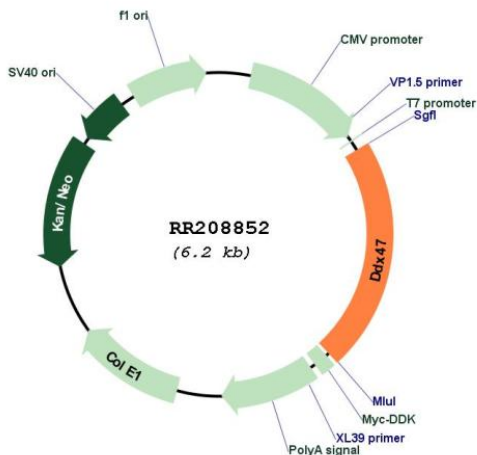
**Restriction Sites:**

Sgfl-Mlul

Cloning Scheme:



Plasmid Map:



ACCN: NM\_001015005

ORF Size: 1365 bp

OTI Disclaimer: The molecular sequence of this clone aligns with the gene accession number as a point of reference only. However, individual transcript sequences of the same gene can differ through naturally occurring variations (e.g. polymorphisms), each with its own valid existence. This clone is substantially in agreement with the reference, but a complete review of all prevailing variants is recommended prior to use. [More info](#)

OTI Annotation: This clone was engineered to express the complete ORF with an expression tag. Expression varies depending on the nature of the gene.

Components: The ORF clone is ion-exchange column purified and shipped in a 2D barcoded Matrix tube containing 10ug of transfection-ready, dried plasmid DNA (reconstitute with 100 ul of water).

**Reconstitution Method:**

1. Centrifuge at 5,000xg for 5min.
2. Carefully open the tube and add 100ul of sterile water to dissolve the DNA.
3. Close the tube and incubate for 10 minutes at room temperature.
4. Briefly vortex the tube and then do a quick spin (less than 5000xg) to concentrate the liquid at the bottom.
5. Store the suspended plasmid at -20°C. The DNA is stable for at least one year from date of shipping when stored at -20°C.

**RefSeq:** [NM\\_001015005.2](#), [NP\\_001015005.2](#)

**RefSeq Size:** 1747 bp

**RefSeq ORF:** 1368 bp

**Locus ID:** 297685

**Cytogenetics:** 4q43

**MW:** 50.7 kDa