

Product datasheet for **RR208840**

Btg3 (NM_019290) Rat Tagged ORF Clone

Product data:

Product Type: Expression Plasmids
Product Name: Btg3 (NM_019290) Rat Tagged ORF Clone
Tag: Myc-DDK
Symbol: Btg3
Vector: pCMV6-Entry (PS100001)
E. coli Selection: Kanamycin (25 ug/mL)
Cell Selection: Neomycin
ORF Nucleotide Sequence: >RR208840 representing NM_019290
Red=Cloning site Blue=ORF Green=Tags(s)

TTTTGTAATACGACTCACTATAGGGCGGCCGGAATTCGTCGACTGGATCCGGTACCGAGGAGATCTGCC
GCC**CGATCGCC**

ATGAAAAACGAAATTGCTGCTGTTGCTCTCTTTTTCACAAAGGCTGGTTCGAAAGCATGATAAGTTGAAAA
AAGAAGCAGTTGAGAGGTTTCTGAGAAATGACTCAAATACTTCAAGAGAAAATACAAAAATCACTGGTA
TCCAGAAAAACCTCAAAGGACAAAGCCTACAGATGCATTCGTGTCAATAAGTTTCAGAGAGTTGATCCC
GACGTCCTGAAAGCCTGTGAGGACAGCTGCATCCTGTACAGTGACCTGGGCTTGCCAAAGGAGCTTACAC
TCTGGGTGGATCCGTGTGAGGTGTGCTGCCGTATGAAAAGAAAAACAATGCATTATTGTTGCCAGCTT
TGAAAATGAGGATGAGAACAAGGATGAGATCTCCAAGAAAGTTAGCAGGGCTCTTGATAAGGTGACCTCT
GATTATCATTACAGGTCCTCCTCCTCAGATGAAGACACAAGCAAGGAAGTAGAAGTGAAACCGAGTGCAG
TGGCTACAACGCCAAGCCCGTGTACCAGATTTCAGAAGTATTTCCACCTCTTCCAATGTGGCACCC
TTTGCCAGAAAAAGCCAGGAATGTACCGAGGGGTGGCCATCAGAGTCACTACCCTCCTCTGTTC
TTTGCTTATCCAAGTCCAGGAAGGAAGAATAAAGCGTTCCGCCAATCCAGTGACATGGGTACCTCCTC
CTGGAATGCATTGTGATCGGAATCACTGGATTAATCCTCACATGTAGCACCTCAC

ACGCGTACGCGGCCGCTCGAGCAGAACTCATCTCAGAAGAGGATCTGGCAGCAAATGATATCCTGGATT
ACAAGGATGACGACGATAAGGTTTAA

Protein Sequence: >RR208840 representing NM_019290
Red=Cloning site Green=Tags(s)

MKNEIAAVVFFTRLVRKHDKLKEAVERFAEKLQILQEYKKNHWYPEKPSKGQAYRCIRVKNKFRVDP
DVLKACEDSCILYSDLGLPKELTLWVDPCEVCCRYGKKNNAFIVASFENEDENKDEISKVSRALDKVTS
DYHSGSSSDEDTKEVEVKPSAVATTPSPVYQISELIFPPLPMWHLPRKKPGMYRGGGHQSHYPPVPV
FAYPSPGRKNKAFRPIPTVWPPPGMHCDRNHWINPHMLAPH

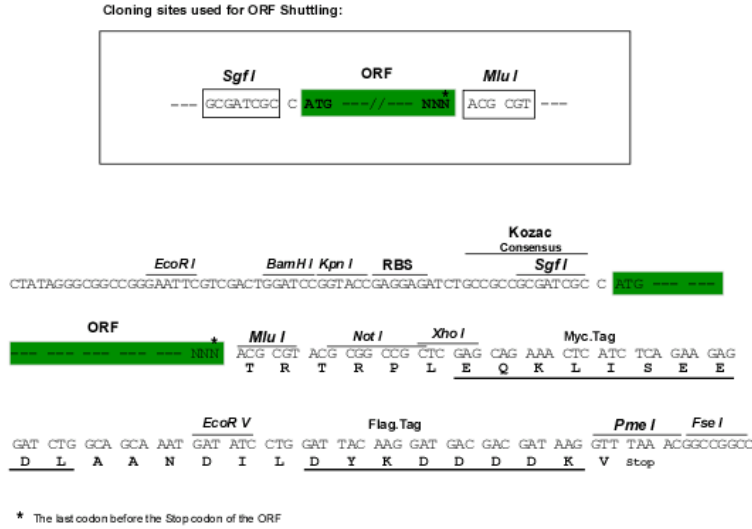
TRTRPLEQKLISEEDLAANDILDYKDDDDKV



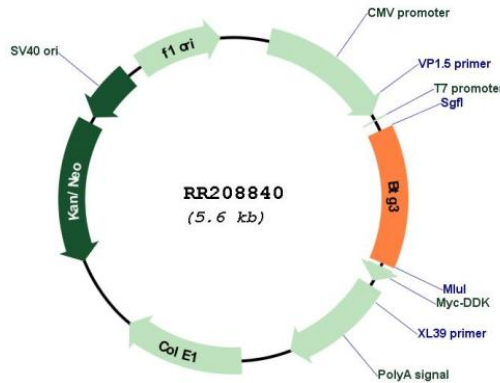
[View online »](#)

Restriction Sites: SgfI-MluI

Cloning Scheme:



Plasmid Map:



ACCN: NM_019290

ORF Size: 756 bp

OTI Disclaimer: The molecular sequence of this clone aligns with the gene accession number as a point of reference only. However, individual transcript sequences of the same gene can differ through naturally occurring variations (e.g. polymorphisms), each with its own valid existence. This clone is substantially in agreement with the reference, but a complete review of all prevailing variants is recommended prior to use. [More info](#)

OTI Annotation: This clone was engineered to express the complete ORF with an expression tag. Expression varies depending on the nature of the gene.

Components:	The ORF clone is ion-exchange column purified and shipped in a 2D barcoded Matrix tube containing 10ug of transfection-ready, dried plasmid DNA (reconstitute with 100 ul of water).
Reconstitution Method:	<ol style="list-style-type: none">1. Centrifuge at 5,000xg for 5min.2. Carefully open the tube and add 100ul of sterile water to dissolve the DNA.3. Close the tube and incubate for 10 minutes at room temperature.4. Briefly vortex the tube and then do a quick spin (less than 5000xg) to concentrate the liquid at the bottom.5. Store the suspended plasmid at -20°C. The DNA is stable for at least one year from date of shipping when stored at -20°C.
RefSeq:	<u>NM_019290.1</u> , <u>NP_062163.1</u>
RefSeq Size:	1259 bp
RefSeq ORF:	759 bp
Locus ID:	54230
UniProt ID:	<u>O88677</u>
Cytogenetics:	11q11
MW:	28.9 kDa
Gene Summary:	may be involved in cellular responses to redox changes [RGD, Feb 2006]