

Product datasheet for **RR208824**

Grhl2 (NM_001134527) Rat Tagged ORF Clone

Product data:

Product Type:	Expression Plasmids
Product Name:	Grhl2 (NM_001134527) Rat Tagged ORF Clone
Tag:	Myc-DDK
Symbol:	Grhl2
Synonyms:	RGD1561191
Vector:	pCMV6-Entry (PS100001)
E. coli Selection:	Kanamycin (25 ug/mL)
Cell Selection:	Neomycin



[View online »](#)

ORF Nucleotide Sequence:

>RR208824 representing NM_001134527
 Red=Cloning site Blue=ORF Green=Tags(s)

TTTTGTAATACGACTCACTATAGGGCGGCCGGGAATTCGTCGACTGGATCCGGTACCGAGGAGATCTGCC
 GCC**CGGATCGCC**

ATGTCACAAGAGTCGGACAATAATAAAAGACTAGTGGCCTTGGTGCCCATGCCAGTGACCTCCCTTCA
 ACACCCGAAGAGCTACACAAGTGAGGATGAGGCTGGAAGTCGTATCTGGAGAACCCCTGACGGCAGC
 CACCAAGGCAATGATGAGCATCAATGGGATGAGGACAGTGTCTGTCCTGGCCCTTCTATGACTAC
 TACAAGTTCTCGAGACAAGAGACTTCTGTCTGTGAGCAAAGCAAGCGACAGCCAAGAAGACGAGGAAA
 AAAGAACTGTCTTGGCACCAGCGAAGCCAGATCAACTTGAGCGGAGGCGAGAACCAGTGCAGTTCT
 GAAGACCGTCCCTGTGAACCTCTGCCTGAGTCAAGACCACATGGAGAATTCGAAGCGTGAGCAGTACAGC
 GTGTCCATCACTGAGAGCCCCCGCTATCCCCGTGTCGGGCATCACGGTGGTAAAGCTGAGGATTTCA
 CGCCCGTGTTCATGGCGCCCCGGTGCATATCCCCGCGCGGACGGTGGCGAGGAGCAGCGCGTGGTTAT
 CTTTGAACAGACTCAGTATGACCTGCCCTCCATAGCCAGCCACAGCTCCTATCTAAAGGACGACCAGCGC
 AGCAGCCCGACAGCACCTACAGCGAGAGCTTCAAGGACGGCGCCCGGAGAAATTCGGAGTACTTCTG
 TTGGTGTGATGAGTATACATATGACCAGACGGGAGTGGTACATTTTCAGTACACCCTGGAAGCCACCAA
 ATCTCTCCGGCAGAAGCAGGGGGAGGGCCCATGACCTACCTCAACAAAGGACAATTCTATGCCATAACA
 CTCAGTGAGACTGGAGACAACAAATGCTCCGACACCCCATCAGCAAAGTCAGGAGTGTAGTGATGGTGG
 TCTTTAGTGAAGACAAAAACCGAGACGAACAGCTGAAGTACTGGAAGTACTGGCACTCCCGGCAGCACAC
 TGCTAAGCAGAGGGTCTTGACATTGCTGATTACAAGGAAAGCTTCAACACCATCGGGAACATTGAAGAG
 ATCGCATACAATGCCGTTTCTTCCACCTGGGATGTGAATGAGGAGGCGAAGATCTTCATCACCGTGAAC
 GCTTGATACAGATTTCTCTCCAGAAGGGTGTGAAAGGACTTCTCTGATGATTCAGATCGACACGTA
 CAGCTATAACAACCGCAGCAATAAACCCATCCACAGAGCGTACTGCCAGATCAAGGTCTTCTGCGACAAG
 GGAGCAGAAAGAAAAATCCGGGATGAAGAGAGGAAGCAGAACAGGAAGAAAGGGAAGGGCCAGGCCCTCC
 AAACCCAGTGCAGCAATTCCTCTGATGGGAAGATGGCCGCCATACCGTTACAGAAGAAGAGTGACATCAC
 GTACTTCAAACCATGCCCGACCTGCACTCACAGCCTGTGCTTTCATACCAGATGTTCACTTTGCCAAC
 CTGCAGAGGACTGGACAGGTCTATTACAACACCGATGATGAGCGAGAAGGCAGCAGTGTCTCGTTAAAC
 GGATGTTCAAGCCATGGAAGAGGAATTTGGTCCAACACCGTCTAAGCAGATTAAGAAGAAAACGTAA
 GCGAGTGTCTTTATACGTGAGGAAGGAGAACGATGACGTGTTGATGCTCTGATGCTGAAATCGCCACA
 GTGAAGGGCTGATGGAAGCGCTGTCTGAGAAGTACGGGTCGCCGTGGAGAAGATCACAAGCTTTATA
 AGAAGAGCAAAAAGGGAATCCTGGTCAACATGGACGACAACATCATTGAGCACTATTCAAATGAGGACAC
 CTTCAATCTCAACATGGAGAGCATGGTGAAGGCTTCAAGATCACATTGATGGAGATC

ACGCGTACGCGGCCGCTCGAGCAGAAACTCATCTCAGAAGAGGATCTGGCAGCAATGATATCCTGGATT
 ACAAGGATGACGACGATAAGGTTTAA

Protein Sequence:

>RR208824 representing NM_001134527
 Red=Cloning site Green=Tags(s)

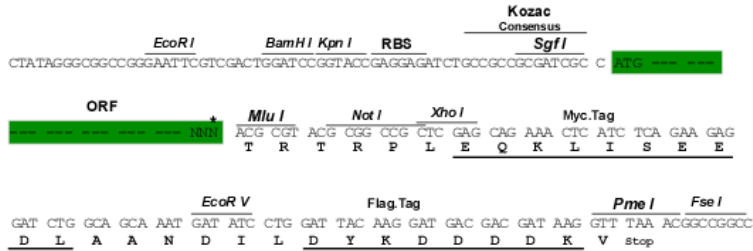
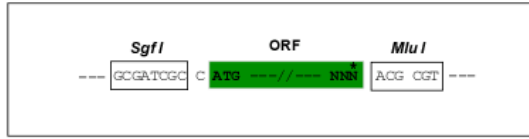
MSQESDNNKRLVALVPMPSPFPNTRRAYTSEDEAWKSYLENPLTAATKAMMSINGDEDSAAALGLLYDY
 YKVPRDKRLLSVSKASDSQDEEKRNLGTSEAQINLSGGENRVQVLKTVPVNLCLSQDHMENSREQYS
 VSITESPAVIVPSGITVVKAEDFTPVFMAPPVHYPRADGGEEQRVVIFEQTQYDLPSIASHSSYLKDDQR
 STPDSTYSESFKDGAPKFRSTSVGADEYTYDQTGSGTFQYTLKSLRQKQEGPMTYLNKGQFYAIT
 LSETGDNKCFRHPISKVRSVVMVVFSEDKNRDEQLKYWKYWSRQHTAKQRVLDIADYKESFNITGNIEE
 IAYNAVSTFDVNEEAKIFITVNCLSTDFSSQKGVKGLPLMIQIDTYSYNNRSNKP IHRAYCQIKVFCDK
 GAERKIRDEERKQNRKKGQASQTQCSNSSDGKMAAIPLQKKS DITYFKTMPDLHSQPVLFI PDVHFAN
 LQRTGQVYYNTDDEREGSSVLVKRMFRPMEEEFGPTPSKQIKEENVKRVLLYVRKENDDVFDALMLKSP
 VKGLMEALSEKYGLPVEKITKLYKSKKGILVNMDNIIIEHYSNEDTFILNMESMVEGFKITLMEI

TRTRPLEQKLISEEDLAANDILDYKDDDDKV

Restriction Sites: SgfI-MluI

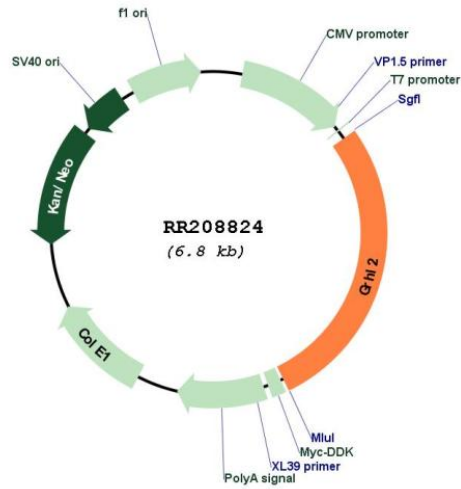
Cloning Scheme:

Cloning sites used for ORF Shuttling:



* The last codon before the Stop codon of the ORF

Plasmid Map:



ACCN: NM_001134527

ORF Size: 1878 bp

OTI Disclaimer:	The molecular sequence of this clone aligns with the gene accession number as a point of reference only. However, individual transcript sequences of the same gene can differ through naturally occurring variations (e.g. polymorphisms), each with its own valid existence. This clone is substantially in agreement with the reference, but a complete review of all prevailing variants is recommended prior to use. More info
OTI Annotation:	This clone was engineered to express the complete ORF with an expression tag. Expression varies depending on the nature of the gene.
Components:	The ORF clone is ion-exchange column purified and shipped in a 2D barcoded Matrix tube containing 10ug of transfection-ready, dried plasmid DNA (reconstitute with 100 ul of water).
Reconstitution Method:	<ol style="list-style-type: none">1. Centrifuge at 5,000xg for 5min.2. Carefully open the tube and add 100ul of sterile water to dissolve the DNA.3. Close the tube and incubate for 10 minutes at room temperature.4. Briefly vortex the tube and then do a quick spin (less than 5000xg) to concentrate the liquid at the bottom.5. Store the suspended plasmid at -20°C. The DNA is stable for at least one year from date of shipping when stored at -20°C.
RefSeq:	NM_001134527.1 , NP_001127999.1
RefSeq Size:	4871 bp
RefSeq ORF:	1881 bp
Locus ID:	299979
Cytogenetics:	7q22
MW:	71.3 kDa