

Product datasheet for **RR208823**

Taf5 (NM_001106365) Rat Tagged ORF Clone

Product data:

Product Type:	Expression Plasmids
Product Name:	Taf5 (NM_001106365) Rat Tagged ORF Clone
Tag:	Myc-DDK
Symbol:	Taf5
Mammalian Cell Selection:	Neomycin
Vector:	pCMV6-Entry (PS100001)
E. coli Selection:	Kanamycin (25 ug/mL)



[View online »](#)

ORF Nucleotide Sequence:

>RR208823 representing NM_001106365
 Red=Cloning site Blue=ORF Green=Tags(s)

TTTTGTAATACGACTCACTATAGGGCGGCCGGGAATTCGTCGACTGGATCCGGTACCGAGGAGATCTGCC
 GCC**CGGATCGCC**

ATGGCGCGCTGGCGGAGGAGCAGACGGAGGTGGCGGTCAAGCTAGAGTCTGAGGGACGCCAACGCTGC
 TACCTCCGACGGCTGGCGACGGCCAGGCGAGGGTAGCGGTGGCACTCCTAACACGGCCCCAACGGCGG
 CGGCGGAATGTGGCGGCGGCGCCGGTGGGGACGGCGGACCCCAAACCAAGTGGTGGCTGTTTCTGCC
 GCTGCCCGCGGGGGCGGCCCGGTGCCCGCCGCTCCCGCGGAGGCCGGCGCTCCTCACGACCGACAGA
 CTCTTCTGGCTGTGCTGCAGTTCCTACGGCAGAGCAACCTCCGCGAGGCCGAAGAGGCACTGCGCCGTGA
 GGCCCGGTGCTGGAGGAGGCGGTGGCGGGCTCCGGAGCTCCGGGAGAGTTGGACGGGGCTGGCGCGGAG
 GCGGCTAGTGCCTTCTCAGCCGGTACCCTCAGTCCCGGCTCTGCGGCCCGGACACTCCGGGAG
 CCGGCGCTTCGGTGACCTCAGTGTCTCAGGTTACGCTCAGTCTGCGGCTCCGGGAAAGGTTGCAAG
 TGTAGCTGTGGAAGACCAGCCAGATGTCAGTGTCTTGTGCGCCTACAACCAACAGGAGACCCTACA
 ATGTATGAAGAATACTACAGTGGACTGAAACACTTCATTGAATGTTCTCTGGACTGCCATCGAGCAGAAT
 TATCCCAACTCTTTTATCCTCTGTTGTACATATGTAATGGAGCTAGTTATAATCAACATGAAAGTGA
 AGCAAAATCATTCTTTGAGAAGTTCACGGAGATCAGGAATGTTATTACCAGGATGACCTACGAGTATTA
 TCTAGTCTTACAAAAAGGAGCAGATGAAAGGGAATGAGACCATGCTGGACTTTCCGGACAAGTAAATTTG
 TTCTTCGATTTCCCGTACTCGTACCAACTCTTGAAGCGGCATCTTCAGGAGAAACAGAACATCAGAT
 ATGGAACATAGTTCAGGAGCACCTCTACATCGACATCTTTGACGGGATGCCCGCAGTAAGCAGCAGATA
 GACGCCATGGTGGGAAGCCTGGCAGGCGAGGCTAAGCGAGAAGCAAACAATCAAAGTATTTTTGGTT
 TATTAAGAACCGGAAATGAGGTGCCTTTGGATGATGAGGATGAAGAAGGAGAAAACGAAGAGGGGAA
 ACCTAAAAAGAAGCCTAAAAAGGATAGTATTGGCTCTAAAAGCAAGAAACAAGATCCCAATGCTCCA
 CCCCCAACAGAAATCCCCCTCCCGAGTTGAAAGATTAGACAAAACGGACAAAATAATGAATATGAAGG
 AAATAACAAACGAGTGCCTTGGCCTGACTGTTTACCCTCCATTTGTTTCTATACATTCCTTAATGC
 GTACCAGGCCTCACTGCAGTGGATGTCAGTGTGATTCTAGCCTGATTGCTGGAGGTTTTGCTGATTCA
 ACCGTCAGAGTGTGTCTGTGACCCCTAAAAAGCTTCGTAGTGTCAAACAAGCATCAGATCTTAGTCTTA
 TAGACAAAGAATCAGATGATGTCTTAGAGAGAATCATGGATGAGAAAACGCAAGTGAGTTGAAGATTTT
 GTATGGTCACAGTGGCCTGTCTATGGAGCCAGCTTCAGTCCGGATAGGAACTACCTACTCTCCTCTTCA
 GAGGATGGAACCGTTAGACTCTGGAGCCTGCAGACTTTCACTTGCTTAGTTGGATATAAAGGACAACT
 ACCCAGTGTGGGACACACAGTTTTCTCCATATGGATATTTTCGTGTGACAGGAGCCATGACCGCTAGC
 TCGGCTTTGGGCTACAGATCACTATCAGCCTTTAAGGATATTCGCTGGCCATCTTGCTGATGTGAATTGC
 ACTAGATTTATCCAAATTCCAACTATGTTGCTACGGGCTCTGCAGACAGAACCGTGGCGCTCTGGGACG
 TCCTCAATGGTAACTGTGTAAGGATCTTCACTGGACACAAGGGACCAATTCATTCTTGACATTTCTCC
 CAATGGGAGATTCCTGGCTACAGGAGCAACAGATGGCAGAGTACTTCTTTGGGATATCGGACATGGCTTG
 ATGTTGGAGAATTAAGGGCCACACTGATACAGTGTGTTCACTTAGGTTTAGTAGAGATGGTGAGATTT
 TGGCATCAGGTTTCGATGGATAACACAGTTCGGTTATGGGATGCCATCAAAGCATTTGAAGATTTAGAAAC
 TGATGACTTTACTACAGCCACTGGGCATATAAATCTACCTGAGAATTCAGGAGTTACTGTTGGGTACA
 TACATGACCAAAATCAACACCAGTCGTACACCTACATTTTACAAGAAGAACTTGGTTCTAGCTGCAGGAG
 CTTACAGTCCGCAA

ACGCGTACGCGGCGCTCGAGCAGAACTCATCTCAGAAGAGGATCTGGCAGCAATGATATCCTGGATT
 ACAAGGATGACGACGATAAGGTTTAA

Protein Sequence: >RR208823 representing NM_001106365
Red=Cloning site Green=Tags(s)

```

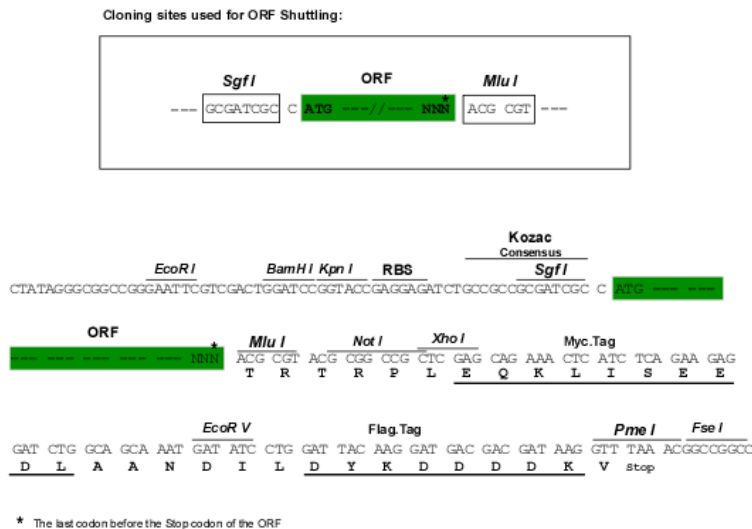
MAALAEQTEVAVKLESEGPPTLLPPQAGDGAGEGSGGTPNNGPNGGGGNVAAAAGDGGTPKPVVAVSA
AAPAGAAPVPAAPAEAGAPHDRQTL L AVLQFLRQSNLREAEALRREARLLEEAVAGSGAPGELDGAGAE
AASALLSRVTASVPGSAAPDTPGAGASVTSVFSGSASGPAAPGKVASVAVEDQPDVSAVLSAYNQGDPT
MYEYYSGLKHFI E C S L D C H R A E L S Q L F Y P L F V H M Y L E L V Y N Q H E S E A K S F F E K F H G D Q E C Y Y Q D D L R V L
SSLTKKEHMKGNETMLDFRTSKFVLRISRDSYQLLKRHLQEKQNNQIWNIVQEHLYIDIFDGMPSKQQI
DAMVGSLAGEAKREANKSKVFFGLLKEPEIEVPLDDEDEEGENEKPKKKPKKDSIGSKSKKQDPNAP
PQNRIPLELKDSDKLDKIMNMKETT K R V R L G P D C L P S I C F Y T F L N A Y Q G L T A V D V T D D S S L I A G G F A D S
TVR V W S V T P K K L R S V K Q A S D L S L I D K E S D D V L E R I M D E K T A S E L K I L Y G H S G P V Y G A S F S P D R N Y L L S S S
EDGTVRLWSLQTF T C L V G Y K G H N Y P V W D T Q F S P Y G Y Y F V S G G H D R V A R L W A T D H Y Q P L R I F A G H L A D V N C
TRFHPNSNYVATGSADRTVRLWDVLNGNCVRI FTGHKGP I H S L T F S P N G R F L A T G A T D G R V L L W D I G H G L
MVGELKGHTDTVCSLRF SRDGE I L A S G S M D N T V R L W D A I K A F E D L E T D D F T T A T G H I N L P E N S Q E L L L G T
YMTKSTPVVHLHFTRRNLVLAAGAYSPQ
    
```

TRTRPLEQKLISEEDLAANDILDYKDDDDKV

Restriction Sites:

SgfI-MluI

Cloning Scheme:



ACCN: NM_001106365

ORF Size: 2394 bp

OTI Disclaimer: The molecular sequence of this clone aligns with the gene accession number as a point of reference only. However, individual transcript sequences of the same gene can differ through naturally occurring variations (e.g. polymorphisms), each with its own valid existence. This clone is substantially in agreement with the reference, but a complete review of all prevailing variants is recommended prior to use. [More info](#)

OTI Annotation: This clone was engineered to express the complete ORF with an expression tag. Expression varies depending on the nature of the gene.

Components: The ORF clone is ion-exchange column purified and shipped in a 2D barcoded Matrix tube containing 10ug of transfection-ready, dried plasmid DNA (reconstitute with 100 ul of water).

- Reconstitution Method:**
1. Centrifuge at 5,000xg for 5min.
 2. Carefully open the tube and add 100ul of sterile water to dissolve the DNA.
 3. Close the tube and incubate for 10 minutes at room temperature.
 4. Briefly vortex the tube and then do a quick spin (less than 5000xg) to concentrate the liquid at the bottom.
 5. Store the suspended plasmid at -20°C. The DNA is stable for at least one year from date of shipping when stored at -20°C.

RefSeq: [NM_001106365.1](#), [NP_001099835.1](#)

RefSeq Size: 3240 bp

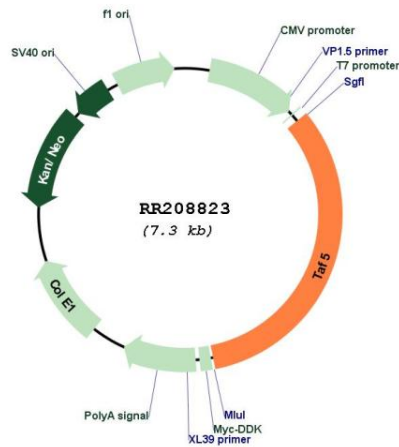
RefSeq ORF: 2397 bp

Locus ID: 294018

Cytogenetics: 1q54

MW: 86.7 kDa

Product images:



Circular map for RR208823