

Product datasheet for **RR208731**

Scrt1 (NM_001130570) Rat Tagged ORF Clone

Product data:

Product Type:	Expression Plasmids
Product Name:	Scrt1 (NM_001130570) Rat Tagged ORF Clone
Tag:	Myc-DDK
Symbol:	Scrt1
Mammalian Cell Selection:	Neomycin
Vector:	pCMV6-Entry (PS100001)
E. coli Selection:	Kanamycin (25 ug/mL)
ORF Nucleotide Sequence:	>RR208731 representing NM_001130570 Red=Cloning site Blue=ORF Green=Tags(s)

TTTTGTAATACGACTCACTATAGGGCGGCCGGAATTCGTCGACTGGATCCGGTACCGAGGAGATCTGCCGCC**GCGATCGCC**

ATGCCAGGTCCTTCTGGTTAAGAAGGTCAAACCTTGACACATTCTCTCGGCAGACCTCGACAGCTCCTACGGGCGGCCCGCAGCGATCTCGGAGTGCAGCTGCAAGATAAAGGATACCTCAGTGACTACGTGGGGCCGCGTCTACGATGGCGACGCTGAGGCGGCATTGCTCAAAGGGCCATCCCGGAGCCTATGTATGCTGCGGCTGTGCGGGGAGAGCTGGGTCCCAGCGCCTCTGGCTCAGCACCGCCGCCACCCCTCGCCAGAGCTGGCTACTGCTGCGGGTACATCAACGGCGACGCGCGGTGAGCAAGGCTACGCGGCCGACGCTCTTCATCACTGACGGGCGCTCACGCCGTAAGGCTGCTAATGCCAACGCTGCCTCGGCCCCCTCGACAGCCTCGGTGGCAGCCCGACAGCGACGCTGGAGGTGGGGCGGGCCGGGCACGCGAGGCTCTGGATCAGGGTCCGCTAGTCGGGTGGTACGCGCGTGGGGCGGGCACCGAGGCGCGTGGGGCCGGGAGCCACGGGCGCTGGTGGCCGGCACGCGTGCAGAGAGTGTGGCAAACCTTACGCCACGTCGTCGAACCTGAGCCGCCACAAGCAAACGCACCGCAGCTTGGACAGCCAGCTGGCAAAGGCGTTGCCAACGTTGGCAAGGTGACGTGTCCAAGTGGCCATGGCTATGCACCTGCTCACGCACGACCTGCGCCACAAGTGGCGGTGTGCGGCAAAGCCTCTCCCGCCCTGGCTGCTGCAGGGCCATATGCGCTCGCACAGGGCGAGAAACCCCTCGGCTGTGCGCACGCGGCAAGGCCTTCGACAGCCGCTCCAACCTGCGCGCACACATGCAGACGCACTCCGCCTCAAGCACTTCCAGTGCAAGGCTGCAAGAAGAGCTTCGCGCTCAAGTCTTATCTCAACAAGCACTACGAGTCAGCCTCTTCAAGGGCGGCCAGCGGCCCGCAACCCCTGCGCCCGCAGCTCAGCCCGTTCAAGCC

AG**CGGACCG**ACGCGTACGCGCCGCTCGAGCAGAACTCATCTCAGAAGAGGATCTGGCAGCAAATGATATCCGTTGATTACAAGGATGACGACGATAAGGTTTAA



[View online »](#)

Protein Sequence: >RR208731 representing NM_001130570
 Red=Cloning site Green=Tags(s)

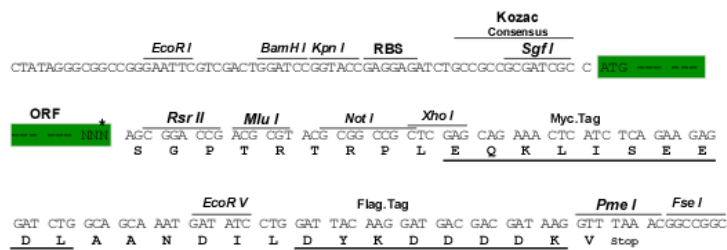
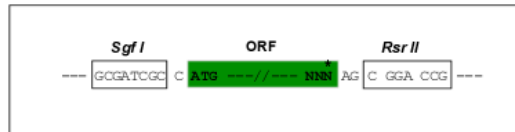
MPRSFLVKKVKLDTFSSADLDSSYGRARSDLGVRLQDKGYLSDYVGPASVYDGDAAEALLKGPSPEPMYA
 AAVRVELGPAASGSAPPPTPRPELATAAGGYINGDAAVSEGYAADAFFITDGRSRRKAANANAASAPSTA
 SVAAPDSADAGGGGPGTRGSGSGSASRGGTRVGAGTEARAGPGATGAGGRHACGECGKTYATSSNL SRHK
 QTHRSLDSQLARRCPTCGKVYVSMAMAMHLLTHDLRHKCGVCGKAFSRPWLLQGHMRSHTGEKPFGCAH
 CGKAFADRSNLRAMQTHSAFKHFQCKRCKKSFALKSYLNKHYESACFKGGASGPATPAPPQLSPVQA

SGPTRTRPLEQKLI SEEDLAANDILDYKDDDDKV

Restriction Sites: SgfI-RsrII

Cloning Scheme:

Cloning sites used for ORF Shuttling:



* The last codon before the Stop codon of the ORF

ACCN: NM_001130570

ORF Size: 1044 bp

OTI Disclaimer: The molecular sequence of this clone aligns with the gene accession number as a point of reference only. However, individual transcript sequences of the same gene can differ through naturally occurring variations (e.g. polymorphisms), each with its own valid existence. This clone is substantially in agreement with the reference, but a complete review of all prevailing variants is recommended prior to use. [More info](#)

OTI Annotation: This clone was engineered to express the complete ORF with an expression tag. Expression varies depending on the nature of the gene.

Components: The ORF clone is ion-exchange column purified and shipped in a 2D barcoded Matrix tube containing 10ug of transfection-ready, dried plasmid DNA (reconstitute with 100 ul of water).

Reconstitution Method:

1. Centrifuge at 5,000xg for 5min.
2. Carefully open the tube and add 100ul of sterile water to dissolve the DNA.
3. Close the tube and incubate for 10 minutes at room temperature.
4. Briefly vortex the tube and then do a quick spin (less than 5000xg) to concentrate the liquid at the bottom.
5. Store the suspended plasmid at -20°C. The DNA is stable for at least one year from date of shipping when stored at -20°C.

RefSeq: NM_001130570.1, NP_001124042.1

RefSeq Size: 1726 bp

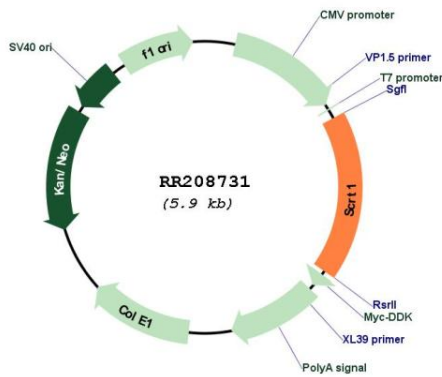
RefSeq ORF: 1047 bp

Locus ID: 366951

Cytogenetics: 7q34

MW: 35.9 kDa

Product images:



Circular map for RR208731