

## Product datasheet for **RR208691**

### Mcf2l (NM\_053951) Rat Tagged ORF Clone

#### Product data:

**Product Type:** Expression Plasmids  
**Product Name:** Mcf2l (NM\_053951) Rat Tagged ORF Clone  
**Tag:** Myc-DDK  
**Symbol:** Mcf2l  
**Synonyms:** mcf 2l; Ost  
**Vector:** pCMV6-Entry (PS100001)  
**E. coli Selection:** Kanamycin (25 ug/mL)  
**Cell Selection:** Neomycin  
**ORF Nucleotide Sequence:** >RR208691 representing NM\_053951  
Red=Cloning site Blue=ORF Green=Tags(s)

TTTTGTAATACGACTCACTATAGGGCGCCGGAATTCGTCGACTGGATCCGGTACCGAGGAGATCTGCC  
GCCGGATCGCC

ATGAGGTTTTGGCTGAGAAATGAAGAGATGGCCCTAGAAGAAATGGTGCAGAGATTAACCGGTTTCCA  
 AGAACACTGATGAAATCATGCACCAGGACATCGTCCCCTCTGTGCCGCTGACATCCAGGAGCAGCTGAA  
 GAAGCGCTTTGCTTACCTGTCTGGTGGGCGGGACAGGACGGAAGCCAGTCATCACCTTCCAGACTAC  
 CCAGCCTTCAGCGAGATCCCGGACAAGGAGTTCCAGAATGTCATGACCTATCTCACCAGCATCCCCAGTT  
 TGCAAGATGCTGGCATCGGGTTCATCTTGGTCATAGACCGAAGACAGGACAAATGGACTTCTGTGAAGGC  
 GTCAGTCTCGCAATAGCCGCATCATTCCAGCCAACCTGCAGCTCGTCTCGTTCTCCGACCCACGGGC  
 TTCTTCCAGAGGACTCTCTCGGACATAGCCTTCAAGTTCAACAGAGATGAGTTTAAAGTGAAAGTACCGG  
 TCATGATGCTAAGCTCAGTGCCAGAACTACATGGCTACATTGACAAGTCACAGCTGACCGAGGACCTTGG  
 GGGACCCTGGACTACTGCCACTCCAGGTGGCTGTGCCACCGCACAGCGATTGAAAGCTTCGCCCTGATG  
 GTGAAGCAGACAGCCAGATGCTGCAGGCCTTTGGGACCGAGCTGGCCGAGACTGAGTGCCCAACGACG  
 TCCAGTCAACCAGCCTGGTGCTCAGCGCACACACAGAGAAGAAGGCTAAAGTGAAGGAGGATCTGCAGT  
 GGCCTGACCGGAGGGGAACAGCATCCTTGAGGCCTCAGGGAGCCGCTGGCTGAGAGCATAGTCCACAGT  
 GTGAACCAGGACCAGCTGGACAATCAGGCCACTGTGAAGAGGCTCCTGACCCAGCTGAATGAGACCGAGG  
 CTGCCCTTGACGAGTTCTGGGCAAAGCATCAGCAGAAGCTGGAACAGTGCCTACAGCTGCGACATTTTGA  
 ACAAGGTTTCCGGGAGGTCAAACCGCCTTGGATTCCAATGTCAGGAGATAGCCGCTTACAGATGTT  
 GGCAACAGCCTGGCCATGTGCAGCACCTCCTGAAGGACTTGACCACCTTTGAGGAGAAGTCCAGCGTGG  
 CCGTGGACAAGGCCAGAGCCCTGTCCCTGGAGGGGACAGCTGATTGAGAACCGGCACTATGCTGTAGA  
 CTCTATCCATCCGAAGTGTGAGGAACCTCAGCACCTCTGTGACCCTTCGCTCTGAGGTACCAGGAGG  
 CGGGACCTTCTCAGCAAGTCCTTGGAGCTGCATAGCCTCCTGGAGACGTCCATGAAGTGGAGCGACGAGG  
 GCATCTTCTGCTGGCCTCTCAGCCTGTGGACAAATGCCAATCTCAGGATGGTGGGAGGAGCCCTGCA  
 GGAGATCGAGAAGTTTCTGGAGACCGGTGCAGAAAACAAGATTACAGGAGCTCAATAAGATTTACAAGGAA  
 TATGAATGCATCCTCAACCAGGACCTTCTGGAACACGTGCAAAAAGTCTTTCAGAAGCAAGAGAGACCCG



[View online >](#)

AGGAGATGTTCCACCGCAGGCAGGCTAGCCTGAAGAACTGGCAGCCAAGCAGACACGGCCTGTGCAGCC  
CGTGGCCCCCGACCAGAGGCGCTAACCAAGTCCCCCTCCCCCTCGCCAGGCTCCTGGCGAAGCTCTGAG  
AACTCCAGCTCTGAGGGCAACGCCCTCCGCAGAGGGCCCTACAGGAGAGCCAAGAGCGAAATGAGTGAGC  
CCCGGCAGGGCCGCACCAGCTCCACAGGAGAAGAGGAGGAGCCTGGCCATCCTGCGCAGACACGTGAT  
GAATGAACTTCTGGACACGGAGCGGGCTACGTGGAGGAGCTGCTCTGTGTCTTAGAGGGCTATGCTGCA  
GAGATGGACAACCCCTTGATGGCACACCTCATCTCAACAGGCCTGCAAAACAAGAAGAATTCTGTTTG  
GAAACATGGAGGAAATCTATCACTTCCACAACAGAATATTCCTGCGGGAGCTGGAGAGCTGCATCGACTG  
CCCAGAGCTGGTGGGGAGATGCTTCTGGAGAGGATGGAGGAGTCCAGATCTATGAGAAGTACTGTCAG  
AACAAAGCCACGCTCCGAGAGCCTGTGGAGACAGTGCTCTGACTGTCCCTTCTCCAGGAGTGCCAGAAGA  
AGCTGGACCACAAGCTGAGCCTCGACTCCTACCTGCTGAAGCCTGTGCAGAGGATAACCAAGTACCAGCT  
GCTGCTCAAGGAAATGCTGAAGTACAGCAAGCACTGTGAAGGGCCGAGGACCTGCAAGAGGCACTGAGC  
TCCATCCTGGGCATCCTCAAGGCAGTGAACGACTCCATGCACCTCATAGCCATCACTGGCTATGATGAA  
ACCTTGGGGACCTGGGGAAGCTGCTGATGCAAGGCTCCTTCAGCGTGTGGACGGACCACAAGAAGGGCCA  
CACCAAGGTGAAGGAGCTAGCCAGGTTCAAGCCATGCAGCGGCACCTTCTCCTTACGAGAAGGGCCGTC  
CTTTCTGCAAGAAGAGGGAGGAGAATGGGGAGGGGTACGAGAAGGCTCCTTCTACAGTACAAGCAGT  
CCTTGAATATGACTGCTGTTGGCATCACAGAGAATGTGAAGGGTGACACCAAGAAGTTCGAGATCTGGTA  
CAACGCAAGGGAGGAGGTTTACATCATTAGGCACCAACTCCCGAGATTAAGCAGCGTGGGTGAATGAG  
ATTCGGAAGGTGCTGACCAGCCAAGTGCAGGCCTGCCGGGAAGCCAGCCAGCACCAGCCCTGGAGCAGT  
CCCACAGCCTTCCCTTGGCCACGCCAGCCAGCACCAGTCCCACAAAAGGGAGCACAAGAAATGTCAAGAA  
GCTCGAAGATCGGAAGACGGACCCGCTCTGCCTGGAAGGCTGCGTGAGCTCATATTACCAAGCCCCCCC  
GAGAAGGGCAAAGACGATGCGGTCCCTAGTTCTACCTCTGAAAGCTCTGCGCTTTCAGAAAAGCGTTCA  
CGCTGCAGGGCTTGGCTAACCTCAAAGCCTCTCCGACCAGTCTGACAAAAAAGCTAAGCGGCATGAAGT  
AAAGAGCGACCCGACTCCCTTTGGTTTGGGAGGCTGGAGCAAAACATCCCACTCACTGGAGGCCCTGAG  
GAGGACGGAGGCTGGTCCAGTGCTGAGGAGCTCATCAATTCATCCGATGCTGAGGAAGACGGAGGAGTGG  
GCCCTAGGAAGCTGGTCCAGGTAATACACAGTCTGATGGATGGTGAAGAAAGGGGCTCTGACACCCT  
TGCCATGAGGAGTGGAGATATGGTGGAGGTTGTGGAAGAAGAACTGAGGGCCTCTGGTATGTTCCGGGAC  
CTGACCAGCAGCAAGGAGGGATGGGTGCCAGCCAGCAGCCTAGCCACCCTCCTGGGCAAATCCAGCTCAG  
CCCAGTGTCTGAGCAGCTCAGGTAAGACCCACTGTGCGGCCAGCTGTGCCCTGAGCCTGCCAAGATCCT  
CAGCCCAGAGCCTGTT

ACGCGTACGCGGCCGCTCGAGCAGAACTCATCTCAGAAGAGGATCTGGCAGCAAATGATATCCTGGATT  
ACAAGGATGACGACGATAAGGTTTAA

Protein Sequence: >RR208691 representing NM\_053951  
 Red=Cloning site Green=Tags(s)

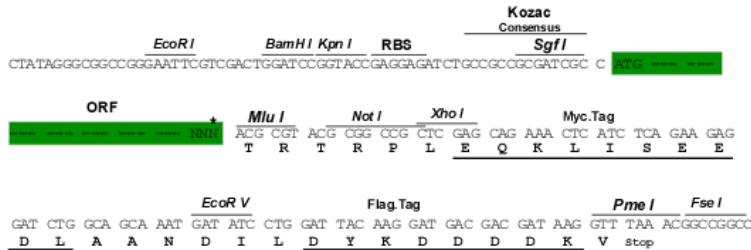
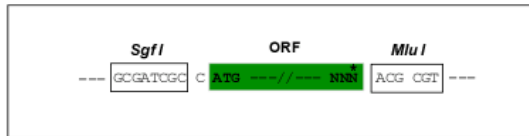
MRFWLRNEEMALEEMVQRLNAVSKNTDEIMHQDIVPLCAADIQEQLKKRFAYLSGGRGQDGSPVITFPDY  
 PAFSEIPDKEFQNVMTYLTSIPSLQDAGIGF ILVIDRRQDKWTSVKASVLR IAASFPANLQLVLRPTG  
 FFQRTLSDIAFKFNRFDEFKMKVPVMMLSSVPELHG YIDKSQLTEDLGGTLDYCHSRWLCHRTAIESFALM  
 VKQTAQMLQAFGTETAETELPNDVQSTSLVLSAHTTEKKAKVKEDLQLALTEGNSILESLREPLAESIVHS  
 VNQDQLDNQATVKRLLTQLNETEAADFDEFWAKHQKLEQCLQLRHFEQGFREVKTALDSMSQKIAAF TDV  
 GNSLAHVQHLLKDLTTFEKSSVAVDKARALSLEGQQLIENRHYAVDSIHPKCEELQHLCDHFASEVTRR  
 RDLLSKSLELHSLLETSMKWSDEGIFLLASQPVDKCQSQDGAEAALQEIEKFLETGAENKIQELNKIYKE  
 YECILNQDLEHVQKVFQKQESTEEMFHRQASLKKLA AKQTRPVQP VAPRPEALTKSPSPSGSWSRSE  
 NSSSEGNALRRGPYRRAKSEMSEPRQGRSSTGEEESLA I LRRHVMNELL DTERAYVEELL CVLEGYAA  
 EMDNPLMAHLISTGLQNKKNILFGNMEEIYHFHNRIFLRELESCIDCP ELVGRCF LERMEEFQIYEK YCQ  
 NKPRSESLWRQCSDCPFQEQCKLDHKLSDSYLLKPVQRITKYQLLLKEMLKYSKHCEGAEDLQEALS  
 SILGILKAVNDSMHLIAITGYDGNLGD LGKLLMQGSF SVWTDHKKGHTKVKELARFKPMQRHLFLHEKAV  
 LFCKKREENGEGYEKAPSYSYKQSLNMTAVGITENVKGD T K KFEI WYNAREE VYI IQAPTPEIKA AWVNE  
 IRKVLTSQLQACREASQHRALEQSHSLPLPTPASTSPTKGSTRNVKLED RKT DPLCLEGCVSSSLPKPP  
 EKGKDDAVPSSTSESSALSRKRF TLQGLANLKASPTSPDKKAKRHEVKS DPTPFGLRGWSKTSHSLEAPE  
 EDGGWSSAEELINSSDAEEDGGVGRKLVPGKYTVLMDGEKGGSDTLAMRSGDMVEVVEEGTEGLWYVRD  
 LTSKKEGWVPASSLATLLGKSSSAQCLSSSGKTHCARQLCPEPAKILSPEPV

TRTRPLEQKLISEEDLAANDILDYKDDDDKV

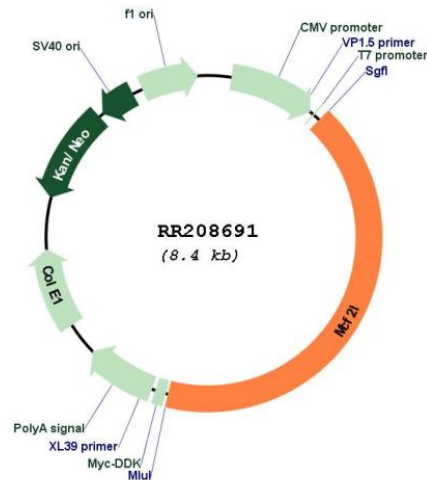
Restriction Sites: SgfI-MluI

Cloning Scheme:

Cloning sites used for ORF Shuttling:



\* The last codon before the Stop codon of the ORF

**Plasmid Map:**


**ACCN:** NM\_053951

**ORF Size:** 3516 bp

**OTI Disclaimer:** The molecular sequence of this clone aligns with the gene accession number as a point of reference only. However, individual transcript sequences of the same gene can differ through naturally occurring variations (e.g. polymorphisms), each with its own valid existence. This clone is substantially in agreement with the reference, but a complete review of all prevailing variants is recommended prior to use. [More info](#)

**OTI Annotation:** This clone was engineered to express the complete ORF with an expression tag. Expression varies depending on the nature of the gene.

**Components:** The ORF clone is ion-exchange column purified and shipped in a 2D barcoded Matrix tube containing 10ug of transfection-ready, dried plasmid DNA (reconstitute with 100 ul of water).

**Reconstitution Method:**

1. Centrifuge at 5,000xg for 5min.
2. Carefully open the tube and add 100ul of sterile water to dissolve the DNA.
3. Close the tube and incubate for 10 minutes at room temperature.
4. Briefly vortex the tube and then do a quick spin (less than 5000xg) to concentrate the liquid at the bottom.
5. Store the suspended plasmid at -20°C. The DNA is stable for at least one year from date of shipping when stored at -20°C.

**RefSeq:** [NM\\_053951.2](#), [NP\\_446403.2](#)

**RefSeq Size:** 4531 bp

**RefSeq ORF:** 3519 bp

**Locus ID:** 117020

**Cytogenetics:** 16q12.5

**MW:** 132.1 kDa

**Gene Summary:** oncogene that can activate small GTP-binding proteins [RGD, Feb 2006]