

## Product datasheet for **RR208687**

### Csnk1d (NM\_139060) Rat Tagged ORF Clone

#### Product data:

Product Type:	Expression Plasmids
Product Name:	Csnk1d (NM_139060) Rat Tagged ORF Clone
Tag:	Myc-DDK
Symbol:	Csnk1d
Vector:	pCMV6-Entry (PS100001)
E. coli Selection:	Kanamycin (25 ug/mL)
Cell Selection:	Neomycin
ORF Nucleotide Sequence:	>RR208687 representing NM_139060 Red=Cloning site Blue=ORF Green=Tags(s)

TTTTGTAATACGACTCACTATAGGGCGGCCGGAATTCGTCGACTGGATCCGGTACCGAGGAGATCTGCC  
GCC**CGATCGCC**

ATGGAGCTGAGGGTCGGGAACAGGTACCGACTGGGCCGAAGATCGGCAGCGGCTCCTTCGGAGACATCT  
ATCTCGGTACGGACATTGCTGCAGGAGAAGAAGTTGCCATCAAGCTTGAATGTGTCAAACCAAACATCC  
TCAGCTCCACATTGAGAGCAAGATCTACAAAATGATGCAGGGAGGAGTGGGCATCCCTACCATCAGATGG  
TGTGGGGCTGAGGGGACTACAATGTCATGGTGTGAGGCTACTGGGACCCAGCCTGGAAGACCTATTCA  
ACTTCTGTTCAAGGAAGTTTAGTCTCAAACTGTTCTGTTGCTTGCTGACCAAATGATAAGTCGTATTGA  
GTACATTCATTGAAGAATTTTATCCACCGAGACGTGAAACCAGATAACTTCCTCATGGGCTGGGAAAG  
AAAGGCAACCTGGTCTACATCATTGACTTTGGGCTGGCCAAGAAGTATCGGGATGCCCGCACCCACCAGC  
ATATCCCCTATCGAGAGAACAAGAACCTCACAGGGACAGCAGCTATGCCTCCATCAACACACACCTTGG  
CATTGAACAATCTCGAAGGGATGACTTGGAGTCTCTGGGTACGTGCTGATGACTTCAACCTGGGCTCT  
CTCCCCTGGCAGGGGCTGAAGGCCGCCACCAAGAGGCAGAAGTATGAGAGGATCAGTGAGAAGAAGATGT  
CCTCCCAATTGAAGTGTGTGCAAGGGCTATCCTTCTGAATTTGCCACATACCTGAATTTCTGCCGTTT  
CTTACGTTTTGATGACAACTGACTACTCCTACCTGAGACAGCTTTCAGAAATCTGTTCCATCGCCAG  
GGCTTCTCCTACGACTATGTGTTGACTGGAACATGCTCAAATTTGGTGCCAGCCGGGCTGCAGATGATG  
CTGAGCGGGAACGCCGGGACCGAGAAGAAGATTAAGACACTCCCGGAATCCAGCCACTCGTGGCCTCCC  
TTCTACAGCTTCCGGCCGTCTGCGGGGAACCCAGGAAGTGGTCCCCCAACGCCCTTACCCCTACCTCA  
CATACGGCCAACCTCTCCTAGACCCGTCTGCGATGGAACGAGAACGAAAGTGAATGCGGCTGC  
ACCGTGGGGCCCCAGTCAACGTCTCCTCATCTGATCTCACGGGCCGACAAGATACCTCTCGCATGTCCAC  
CTCACAGATCCCGGTGCGGTGGCTTCCAGTGGTCTTCACTGTGCTGTCACCGA

**ACGCGT**ACGCGGCCGCTCGAGCAGAACTCATCTCAGAAGAGGATCTGGCAGCAAATGATATCCTGGATT  
ACAAGGATGACGACGATAAGGTTTAA



[View online »](#)

**Protein Sequence:** >RR208687 representing NM\_139060  
 Red=Cloning site Green=Tags(s)

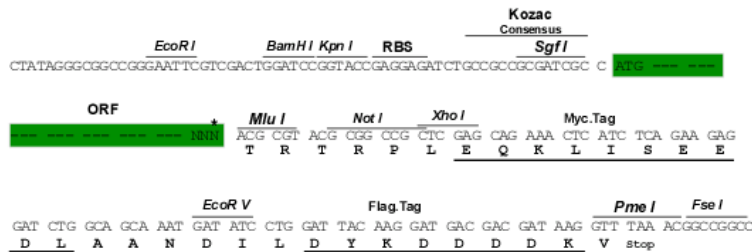
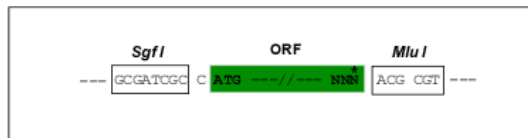
MELRVGNRYRLGRKIGSGSFGDIYLGTDIAAGEEVAIKLECVKTKHPQLHIESKIYKMMQGGVGIPTIRW  
 CGAEGDYNVMVMEELLGPSLEDLFNFCSRKFSLKTVLLADQMISR IEYIHSKNFIHRDVKPDNFMGLGK  
 KGNLVYIIDFGLAKKYRDARTHQHPIPYRENKNLTGTARYASINHLGIEQSRDDLESGLVYLMYFNLGS  
 LPWQGLKAATKRQKYERISEKKMSTPIEVLCKGYSEFATYLNFCRSLRFDDKPDYSYLRLFRNLFHRQ  
 GFSYDYVFDWNMLKFGASRAADDAERERREREERLRHSRNPATRGLPSTASGRLRGTQEVA PPTPLTPTS  
 HTANTSPRPVSGMERERKYSMLRHRGAPVNVSSDLTGRQDTSRMSTSQIPGRVASSGLQSVVHR

**TRTRPLEQKLISEEDLAANDILDYKDDDDKV**

**Restriction Sites:** SgfI-MluI

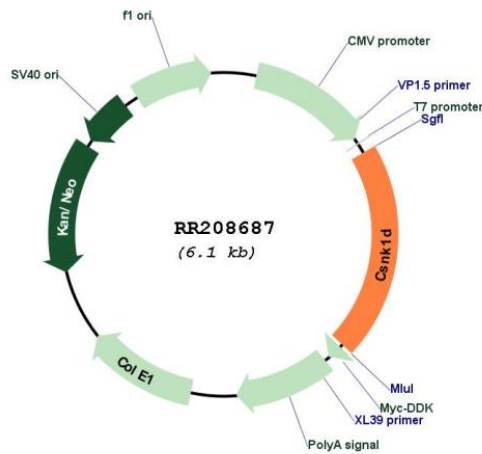
**Cloning Scheme:**

Cloning sites used for ORF Shutting:



\* The last codon before the Stop codon of the ORF

**Plasmid Map:**



**ACCN:** NM\_139060

<b>ORF Size:</b>	1245 bp
<b>OTI Disclaimer:</b>	The molecular sequence of this clone aligns with the gene accession number as a point of reference only. However, individual transcript sequences of the same gene can differ through naturally occurring variations (e.g. polymorphisms), each with its own valid existence. This clone is substantially in agreement with the reference, but a complete review of all prevailing variants is recommended prior to use. <a href="#">More info</a>
<b>OTI Annotation:</b>	This clone was engineered to express the complete ORF with an expression tag. Expression varies depending on the nature of the gene.
<b>Components:</b>	The ORF clone is ion-exchange column purified and shipped in a 2D barcoded Matrix tube containing 10ug of transfection-ready, dried plasmid DNA (reconstitute with 100 ul of water).
<b>Reconstitution Method:</b>	<ol style="list-style-type: none"><li>1. Centrifuge at 5,000xg for 5min.</li><li>2. Carefully open the tube and add 100ul of sterile water to dissolve the DNA.</li><li>3. Close the tube and incubate for 10 minutes at room temperature.</li><li>4. Briefly vortex the tube and then do a quick spin (less than 5000xg) to concentrate the liquid at the bottom.</li><li>5. Store the suspended plasmid at -20°C. The DNA is stable for at least one year from date of shipping when stored at -20°C.</li></ol>
<b>RefSeq:</b>	<a href="#">NM_139060.3</a> , <a href="#">NP_620691.2</a>
<b>RefSeq Size:</b>	3646 bp
<b>RefSeq ORF:</b>	1248 bp
<b>Locus ID:</b>	64462
<b>UniProt ID:</b>	<a href="#">Q06486</a>
<b>Cytogenetics:</b>	10q32.3
<b>MW:</b>	47.3 kDa
<b>Gene Summary:</b>	This gene encodes a member of the casein kinase I (CKI) family of serine/threonine protein kinases. A highly similar human protein regulates an array of cellular processes by influencing the Wnt and hedgehog signaling pathways. The encoded protein may also be involved in the regulation of apoptosis, circadian rhythm, microtubule dynamics, chromosome segregation, and p53-mediated effects on growth. [provided by RefSeq, Feb 2014]