

## Product datasheet for **RR208686**

### Chid1 (NM\_001047854) Rat Tagged ORF Clone

#### Product data:

**Product Type:** Expression Plasmids  
**Product Name:** Chid1 (NM\_001047854) Rat Tagged ORF Clone  
**Tag:** Myc-DDK  
**Symbol:** Chid1  
**Synonyms:** Cc1-9; RGD1308955  
**Vector:** pCMV6-Entry (PS100001)  
**E. coli Selection:** Kanamycin (25 ug/mL)  
**Cell Selection:** Neomycin  
**ORF Nucleotide Sequence:** >RR208686 representing NM\_001047854  
 Red=Cloning site Blue=ORF Green=Tags(s)

TTTTGTAATACGACTCACTATAGGGCGCCGGGAATTCGTCGACTGGATCCGGTACCGAGGAGATCTGCC  
 GCC**CGGATCGCC**

ATGCCTACCATGTGGCCACTTCTTCATGTCTCTGGCTTGTCTGGTCTGTGGCTCTGTTACACCACCC  
 TGTCAAAGTCAGATGCCAAAAAGCTGCCTCAAAGACGCTGCTGAAAAAGACTCAGTTTTCGGATAAAC  
 TGTCGAAGACCGGGTCTGGTGGTGACGGACATCAAAGCTGAGGATGTGGTTCTTGAACATCGTAGCTAC  
 TGCTCAGCAAGGGCTCGGGAGAGAACTTTGCTGGAGAGGTCCTAGGCTATGTCCTCCATGGAACAGCC  
 ATGGCTATGATGTTGCCAAGGTCTTTGGGAGCAAGTTCACACAGATCTCACCAAGTCTGGTTGCAGCTGAA  
 GAGACGTGGTCGGGAGATGTTTGAATCACAGGCTCCATGATGTGGACCAAGGGTGGATGCGAGCTGTC  
 AAGAAGCATGCCAAAGCGTGCGCATAGTGCCTCGGCTTCTGTTGAAGACTGGACTTACGATGATTTCC  
 GAAGCGTCTAGACAGTGAGGATGAGATAGAAGAGCTCAGCAAGACTGTGGTACAGGTGGCAAAGAACCA  
 GCATTTTGACGGCTTTGTGGTGGAGTCTGGAGCCAGTGTGCTGAGCCAGAAACATGTAGGCTCATTAC  
 ATGCTTACTCACTTGGCTGAGGCGCTGCACCAGCCAGGCTGCTGGTATTCTGGTATCCACCTGCTG  
 TCACCCCTGGGACTGACCAGCTGGGCATGTTTACACACAAGGAGTTTGAGCAGCTGGCCCCATACTAGA  
 TGGCTTACGCTCATGACATACGACTACTCCACATCACAGCAGCCTGGCCCTAATGCTCCATTGTCATGG  
 ATCCGAGCTGTGTTAGGTCCTAGACCCCAAGTACAGTGCCGTAGCAAGATCCTCCTGGGATTGAACT  
 TCTATGGCATGGATTATGCAGCCTCCAAGGATGCCCGTGAGCCTGTATTGGAGCCAGGTACATACAGAC  
 GCTGAAGGACCACAGGCCCGTGTGGTATGGGACAGCCAGGCTGCGGAACACTTCTTTGAGTACAAGAAG  
 AATCGCGGCGGGAGGCACGTTGTCTTACCCAACGCTGAAGTCTCTGCAGGTGCGGCTGGAGCTAGCCA  
 GGGAGCTGGGCGTGGGGTCTCCATCTGGGAGCTGGGCCAAGGCTGGATTACTTCTATGACCTGCTG

**ACGCGT**ACGCGGCCGCTCGAGCAGAACTCATCTCAGAAGAGGATCTGGCAGCAAATGATATCCTGGATT  
 ACAAGGATGACGACGATAAGGTTTAA



[View online »](#)

**Protein Sequence:** >RR208686 representing NM\_001047854  
 Red=Cloning site Green=Tags(s)

MPTMWPLLHVLWLALVCGSVHTTLSKSDAKKAASKTLLEKTQFSDKPVQDRGLVVTDIKAEDVVLEHRSY  
 CSARARERNFAGEVLGYVTPWNSHGVDVAKVFGSKFTQISPVWLQLKRRGEMFEITGLHDVDQGWMRV  
 KKHAKGVRIVPRLLFEDWTYDDFRSVLDESEIEELSKTVVQVAKNQHFDFGVVEVWSQLLSQKHVGLIH  
 MLTHLAEALHQARLLVILVIPPVTPGTDLGMFTHKEFEQLAPILDGFSMLTYDYSTSQPGPNAPLSW  
 IRACVQVLDPKSQWRSKILLGLNFYGM DY AASKDAREPVI GARYIQTLKDRPRVWDSQAAEHFFEYKK  
 NRGGRHVVFYPTLKSLQVRLELARELGVGYSIWELGQGLDYFYDLL

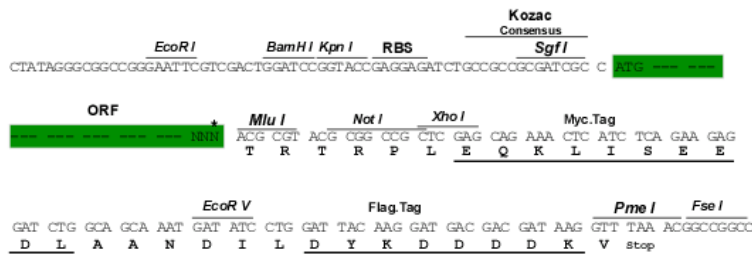
TRTRPLEQKLISEEDLAANDILDYKDDDDKV

**Restriction Sites:**

SgfI-MluI

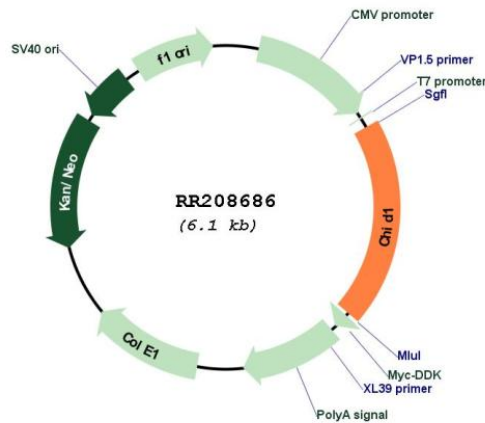
**Cloning Scheme:**

Cloning sites used for ORF Shuttling:



\* The last codon before the Stop codon of the ORF

**Plasmid Map:**



**ACCN:** NM\_001047854

|                               |   |
|-------------------------------|---|
| <b>ORF Size:</b>              | 1188 bp   |
| <b>OTI Disclaimer:</b>        | The molecular sequence of this clone aligns with the gene accession number as a point of reference only. However, individual transcript sequences of the same gene can differ through naturally occurring variations (e.g. polymorphisms), each with its own valid existence. This clone is substantially in agreement with the reference, but a complete review of all prevailing variants is recommended prior to use. <a href="#">More info</a>  |
| <b>OTI Annotation:</b>        | This clone was engineered to express the complete ORF with an expression tag. Expression varies depending on the nature of the gene.  |
| <b>Components:</b>            | The ORF clone is ion-exchange column purified and shipped in a 2D barcoded Matrix tube containing 10ug of transfection-ready, dried plasmid DNA (reconstitute with 100 ul of water).  |
| <b>Reconstitution Method:</b> | <ol style="list-style-type: none"><li>1. Centrifuge at 5,000xg for 5min.</li><li>2. Carefully open the tube and add 100ul of sterile water to dissolve the DNA.</li><li>3. Close the tube and incubate for 10 minutes at room temperature.</li><li>4. Briefly vortex the tube and then do a quick spin (less than 5000xg) to concentrate the liquid at the bottom.</li><li>5. Store the suspended plasmid at -20°C. The DNA is stable for at least one year from date of shipping when stored at -20°C.</li></ol> |
| <b>RefSeq:</b>                | <a href="#">NM_001047854.2</a> , <a href="#">NP_001041319.2</a>   |
| <b>RefSeq Size:</b>           | 1446 bp   |
| <b>RefSeq ORF:</b>            | 1191 bp   |
| <b>Locus ID:</b>              | 293628  |
| <b>UniProt ID:</b>            | <a href="#">A0JPQ9</a>  |
| <b>Cytogenetics:</b>          | 1q41  |
| <b>MW:</b>                    | 45.2 kDa  |
| <b>Gene Summary:</b>          | Saccharide- and LPS-binding protein with possible roles in pathogen sensing and endotoxin neutralization. Ligand-binding specificity relates to the length of the oligosaccharides, with preference for chitotetraose (in vitro) (By similarity).[UniProtKB/Swiss-Prot Function]  |