

## Product datasheet for **RR208649**

### Masp1 (NM\_022257) Rat Tagged ORF Clone

#### Product data:

Product Type:	Expression Plasmids
Product Name:	Masp1 (NM_022257) Rat Tagged ORF Clone
Tag:	Myc-DDK
Symbol:	Masp1
Synonyms:	Masp1/3; Masp3
Mammalian Cell Selection:	Neomycin
Vector:	pCMV6-Entry (PS100001)
E. coli Selection:	Kanamycin (25 ug/mL)



[View online »](#)

**ORF Nucleotide Sequence:**

>RR208649 representing NM\_022257  
 Red=Cloning site Blue=ORF Green=Tags(s)

TTTTGTAATACGACTCACTATAGGGCGGCCGGGAATTCGTCGACTGGATCCGGTACCGAGGAGATCTGCC  
 GCC**CGGATCGCC**

ATGAGGTTCTGTCTTTTCAGACGGCTCCTCTCTACCATGTTCTGTGCCTCACCTGACGGAGGTTTCAG  
 CCCATACCGTGGAGCTAAATGAAATGTTTGGCCAGATCCAGTCCCCTGGCTATCCGGATTCTATCCGAG  
 TGACTCGGAGGTGACCTGGAATATTACTGTCCCGAGTTCGGGTCCAGCTTTACTTTCATGCACTTCAAC  
 TTGGAATCCTCTACCTTGTGAATATGACTATGTGAAGGTAGAAACCGAAGACCAGGTGCTGGCAACCT  
 TCTGTGGCAGGGAGACCACCGATACCGAGCAGACCCCGGCCAGGAAGTGGTTCTTTGCGCTGGTTCCTT  
 TATGTCTGTCACTTTCGGTTCAGATTTCTCCAATGAGGAACGATTCACAGGTTTTGACGCCCACTACATG  
 GCTGTAGATGTGGATGAGTGAAGGAAAGGAAGATGAGGAGCTGCTGTGACCACTACTGCCACAACCT  
 ACATCGGCGGCTACTACTGCTCCTGTGCTTTGGCTACATCCTCCACACAGACAACAGGACCTGCCGAGT  
 GGATGCAGTGGCAATCTTTTACCCAGAGGACAGGCACAATCACCAGCCGGATTACCCCAACCCCTTAC  
 CCCAAGAGCTCTGAATGTTCTATACCATTGACCTGGAGGAGGGCTTCATGGTTACCCTGCACTTTGAGG  
 ACATTTTTGACATTGAAGACCATCCCGAGGTGCCCTGTCCCTATGACTACATTAAGATTAAGCTGGTTC  
 AAAAGTATGGGGACCTTCTGTGGAGAGAAATCCCCAGAACCAATCAGCACCCAGAGTCATAGCATCCAG  
 ATCCTATTTTCGCAGCGACAATTCAGGAGAGAACCAGGCTGGAGGCTCTCCTACAGGGCTGCAGGAAATG  
 AGTGCCCAAAGCTACAACCCCGTGTATGGGAAAATTGAACCTCGCAAGCCGTGACTCCTTCAAAGA  
 CCAAGTGTCTCAGCTGTGACACGGCTACAAAGTGTAAAGGATAACGAGGTGATGGACACATTCCAA  
 ATTGAGTGTCTGAAGGATGGTGCATGGAGTAACAAGATTCCCACCTGTAAAATTTAGACTGTGGAGTTC  
 CAGCAGTGTGAAACATGGGCTAGTAACCTTCTCCACAAGAAAACCTCACCACGTACAATCTGAGAT  
 AAGGTACTCCTGCCAGCAACCCTATTACAAGATGCTTCAACAATACCACAGGTGTATATACATGTTCTGCT  
 CATGGGACCTGGACAAATGAAGTGTCAAGAGAAGCCTGCCACCTGCCTTCCAGTGTGTGGTCTCCCCA  
 AGTTCCTCCGGAAGCACATCTCCAGGATCTTCAATGGACGCCAGCCAGCCAGAAGGGTACCCTCCATGGAT  
 TGCCATGCTGTCACAACTGAATGGGCAACCCTTCTGTGGGGTAGCCTTTTAGGTTCCAAGTGGTTTTG  
 ACGGCTGCTCACTGTCTCCACCATCCACTTGATCCAGAAGAGCCAATCTTACACAACCTCACATTTGCTCA  
 GCCCTTCTGACTTCAAAATTATCATGGGAAAGCACTGGAGACGCCGCTCAGATGAAGACGAACAGCATCT  
 GCATGTAAGCACATCATGCTCCACCCGCTGTACAACCCAGCACATTTGAGAACGACTTGGGTCTGGTG  
 GAACTGTCAGAGAGTCCAAGGCTGAACGACTTTGTGATGCCTGTCTGTCTGCCTGAGCACCTTCCACTG  
 AAGGAACCATGGTCATCGTCAGCGGCTGGGGGAAGCAGTTCCTACAGAGGCTTCCAGAGAACCTGATGGA  
 GATTGAAATCCCAATTGTAAACTACCATACCTGCCAAGAGGCCTACACCCATTGGGGAAGAAAGTGACC  
 CAGGACATGATCTGTGCTGGAGAAAAGGAAGGGGAAAAGACGCCTGTGCTGGCGACTCTGGAGGCCCA  
 TGGTGACCAAAGATGCAGAGAGAGACCAATGGTACCTGGTGGGCGTGGTGTCTGGGGTGAAGATTGCGG  
 GAAGAAAGATCGCTATGGAGTTTATTCTTATATCTATCCAACAAGGATTGGATCCAGAGGGTCACTGGG  
 GTGAGGAAC

**ACGCGT**ACGCGGCCGCTCGAGCAGAACTCATCTCAGAAGAGGATCTGGCAGCAAATGATATCCTGGATT  
 ACAAGGATGACGACGATAAGGTTTAA

**Protein Sequence:** >RR208649 representing NM\_022257  
 Red=Cloning site Green=Tags(s)

```

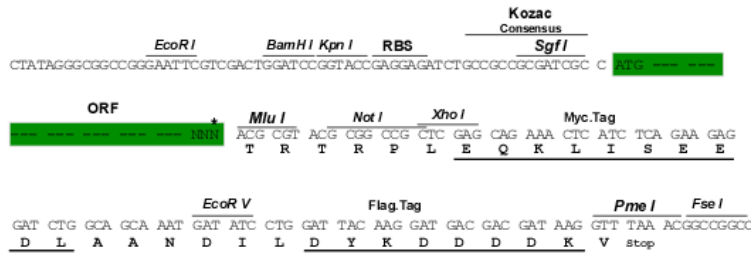
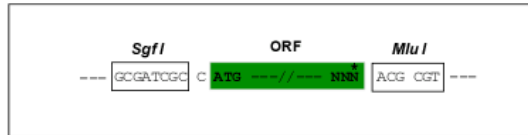
MRFLSFRRLLLYHVLCLTLTEVSAHTVELNEMFGQIQSPGYPDSYPSDSEVTWNIIVPEFRVQLYFMHFN
LESSYLCEYDYVKVETEDQVLATFCGRETTDTEQTPGQEVVLSPGSFMSVTFRSDFSNEERFTGFDAHYM
AVDVDECKEREDEELSCDHYCHNYIGGYCSCRFGYILHTDNRTCVRVCSGNLFTQRTGITSPDYPNPY
PKSSECSYTIIDLEEGFMVTLHFEDIFDIEDHPEVPCPYDYIKIKAGSKVWGPFCGEKSPEPISTQSHSIQ
ILFRSDNSGENRGWRLSYRAAGNECPKLQPPVYKIEPSQAVYSFKDQVLI SCDTGYKVLKDNVMDTFQ
IECLKDGAWSNKIPTCKIIVDCGVPVAVLKHGLVTFSTRNLLTTYKSEIRYSCQQPYKMLHNTTGYYTCSA
HGTWTNEVLKRSRSLPTCLPVCGLPKFSRKHISRIFNGRPAQKGTTPWIAMLSQLNGQPFCGGSLGSNWVL
TAAHCLHHPLDPEEPILHNSHLLSPSDFKIIMGKHWRRSDEDEQHLHVKHIMLHPLYNPSTFENDLGLV
ELSESPRLNDFVMPVCLPEHPSTEGTMIVSWGKQFLQRLPENLMEIEIPIVNYHTCQEAYTPLGKKVT
QDMICAGEKEGGKDACAGDSGGPMVTKDAERDQWYLVGVVSWGEDCGKKDRYGVYSYIYPNKDWIQRVTG
VRN
  
```

**TRTRPLEQKLI SEEDLAANDILDYKDDDDKV**

**Restriction Sites:**  
**Cloning Scheme:**

SgfI-MluI

Cloning sites used for ORF Shutting:



\* The last codon before the Stop codon of the ORF

**ACCN:** NM\_022257

**ORF Size:** 2109 bp

**OTI Disclaimer:** The molecular sequence of this clone aligns with the gene accession number as a point of reference only. However, individual transcript sequences of the same gene can differ through naturally occurring variations (e.g. polymorphisms), each with its own valid existence. This clone is substantially in agreement with the reference, but a complete review of all prevailing variants is recommended prior to use. [More info](#)

**OTI Annotation:** This clone was engineered to express the complete ORF with an expression tag. Expression varies depending on the nature of the gene.

**Components:** The ORF clone is ion-exchange column purified and shipped in a 2D barcoded Matrix tube containing 10ug of transfection-ready, dried plasmid DNA (reconstitute with 100 ul of water).

**Reconstitution Method:**

1. Centrifuge at 5,000xg for 5min.
2. Carefully open the tube and add 100ul of sterile water to dissolve the DNA.
3. Close the tube and incubate for 10 minutes at room temperature.
4. Briefly vortex the tube and then do a quick spin (less than 5000xg) to concentrate the liquid at the bottom.
5. Store the suspended plasmid at -20°C. The DNA is stable for at least one year from date of shipping when stored at -20°C.

**RefSeq:** [NM\\_022257.1](#), [NP\\_071593.1](#)

**RefSeq Size:** 5112 bp

**RefSeq ORF:** 2112 bp

**Locus ID:** 64023

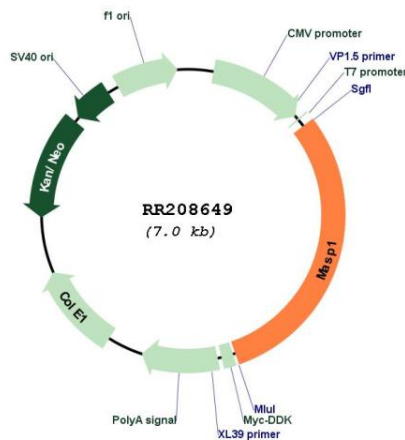
**UniProt ID:** [Q8CHN8](#)

**Cytogenetics:** 11q23

**MW:** 80 kDa

**Gene Summary:** serine protease that plays a role in the mannan-binding lectin complement pathway [RGD, Feb 2006]

**Product images:**



Circular map for RR208649