

Product datasheet for **RR208644**

Plpp3 (NM_138905) Rat Tagged ORF Clone

Product data:

Product Type:	Expression Plasmids
Product Name:	Plpp3 (NM_138905) Rat Tagged ORF Clone
Tag:	Myc-DDK
Symbol:	Plpp3
Synonyms:	Dri42; Ppap2b
Mammalian Cell Selection:	Neomycin
Vector:	pCMV6-Entry (PS100001)
E. coli Selection:	Kanamycin (25 ug/mL)
ORF Nucleotide Sequence:	>RR208644 representing NM_138905 Red=Cloning site Blue=ORF Green=Tags(s)

TTTTGTAATACGACTCACTATAGGGCGCCGGGAATTCGTCGACTGGATCCGGTACCGAGGAGATCTGCC
GCC**CGATCGCC**

ATGCAAAGCTACAAGTACGACAAGGCGATCGTCCCTGAGAGTAAGAACGGCGGTAGCCCGGCGCTCAACA
ACAACCCGAGGAAAGGCGGCAGCAAGCGGGTGTGCTCATCTGCCTCGACCTCTTCTGCCTTTCATGGC
GGCTCTGCCCTTCTCATCATCGAGACAAGCACCATTAAAGCCTTATCGTCGAGGGTTTTACTGCAACGAC
GAGAGCATCAAGTACCCCTGAAAGTCAGCGAGACTATAAACGACGCCGTGCTCTGTGCGGTGGGGATCG
TCATCGCCATCCTGGCGATCATCAGGGGAATTCTACCGGATCTATTACCTCAAGGAGAAGTCCCGATC
CACCATTGAGAACCTTATGTGGCCGCTCTATAAGCAAGTGGGATGCTTCTTTTCGGCTGTGCCATC
AGCCAGTCCTTACAGACATCGCAAAGTGTCCATTGGGCGCCTGAGGCCTCACTTCTCAGCGTCTGTG
ACCTGATTTTCAGTCAGATCAATTGCTCCGAGGGCTACATTGAGAACTACAGGTGCCGAGGAGAAGACAG
CAAAGTACAGGAGGCCAGGAAATCCTTCTTCTCGGGCCACGCCTCCTTCTCCATGTTTACAATGCTGTAT
CTGGTGTCTTATCTACAGGCCGCTTACCTGGCGTGGGGCCCGGCTCCTCCGCCCTCCTGCAGTTCA
CTTTGCTCATGATGGCCTTCTACACGGGATTGTACGTGTATCTGACTACAAACACCATCCTAGCGATGT
CCTGGCAGGATTTGCCCAAGGAGCTCTGGTGGCCTGCTGCATAGTGTCTTCTGTGTCTGACCTCTTCAAG
ACTAAGACGACCCTCTACTGCCTGCCCGCGATCAGGAGAGAGATCCTGTCTCCTGTAGACATCATGG
ACAGGAGCAATCACCACAACATGGTG

ACGCGTACGCGGCCGCTCGAGCAGAAACTCATCTCAGAAGAGGATCTGGCAGCAAATGATATCCTGGATT
ACAAGGATGACGACGATAAGGTTTAA



[View online »](#)

Protein Sequence: >RR208644 representing NM_138905
Red=Cloning site Green=Tags(s)

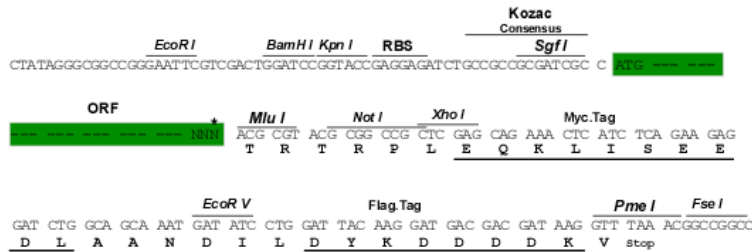
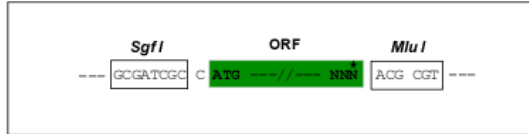
MQSYKYDKAIVPESKNGGSPALNNNPRKGGSKRVLLICLDLFLFMAALPFLIIETSTIKPYRRGFYCNDESIKYPLKVSETINDAVLCAVGIVIAILAIITGEFYRIYLLKEKSRSTIQNPYVAALYKQVGCFLFGCAISQSFTDIAKVSIGRLRPHFLSVCDPDFSQINCSEGYIQNYRCRGEDSKVQEARKSFFSGHASF SMFTMLYLVLYLQARFTWRGARLLRPLLQFTLLMMAFYTGLSRVSDYKHHPSDVLGFAQGALVACCI VFFVSDLFKTKTTLSLPAPAIRREILSPVDIMDRSNHHNMV

TRTRPLEQKLISEEDLAANDILDYKDDDDKV

Restriction Sites: SgfI-MluI

Cloning Scheme:

Cloning sites used for ORF Shuttling:



* The last codon before the Stop codon of the ORF

ACCN: NM_138905

ORF Size: 936 bp

OTI Disclaimer: The molecular sequence of this clone aligns with the gene accession number as a point of reference only. However, individual transcript sequences of the same gene can differ through naturally occurring variations (e.g. polymorphisms), each with its own valid existence. This clone is substantially in agreement with the reference, but a complete review of all prevailing variants is recommended prior to use. [More info](#)

OTI Annotation: This clone was engineered to express the complete ORF with an expression tag. Expression varies depending on the nature of the gene.

Components: The ORF clone is ion-exchange column purified and shipped in a 2D barcoded Matrix tube containing 10ug of transfection-ready, dried plasmid DNA (reconstitute with 100 ul of water).

Reconstitution Method:

1. Centrifuge at 5,000xg for 5min.
2. Carefully open the tube and add 100ul of sterile water to dissolve the DNA.
3. Close the tube and incubate for 10 minutes at room temperature.
4. Briefly vortex the tube and then do a quick spin (less than 5000xg) to concentrate the liquid at the bottom.
5. Store the suspended plasmid at -20°C. The DNA is stable for at least one year from date of shipping when stored at -20°C.

RefSeq: [NM_138905.2](#), [NP_620260.2](#)

RefSeq Size: 3105 bp

RefSeq ORF: 939 bp

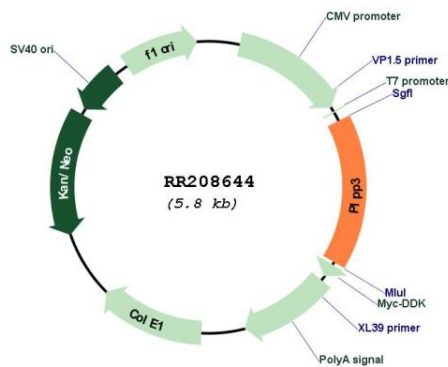
Locus ID: 192270

Cytogenetics: 5q34

MW: 35.2 kDa

Gene Summary: an endoplasmic reticulum resident protein; upregulated during epithelial differentiation [RGD, Feb 2006]

Product images:



Circular map for RR208644