

Product datasheet for **RR208641**

Psap (NM_013013) Rat Tagged ORF Clone

Product data:

Product Type:	Expression Plasmids
Product Name:	Psap (NM_013013) Rat Tagged ORF Clone
Tag:	Myc-DDK
Symbol:	Psap
Synonyms:	SGP-1; SGP1A
Vector:	pCMV6-Entry (PS100001)
E. coli Selection:	Kanamycin (25 ug/mL)
Cell Selection:	Neomycin



[View online »](#)

ORF Nucleotide Sequence:

>RR208641 representing NM_013013
 Red=Cloning site Blue=ORF Green=Tags(s)

TTTTGTAATACGACTCACTATAGGGCGGCCGGGAATTCGTCGACTGGATCCGGTACCGAGGAGATCTGCC
 GCC**GCGATCGCC**

ATGTATGCTCTCGCTCTCCTCGCCAGCCTTCTGGTCACCCTCTGACCAGCCCTGTCCAGGACCCGAAGA
 TCTGCTCTGGGGCTCAGCAGTAGTGTGCAGAGATGTGAAGACGGCGGTGGACTGTAGGGCTGTGAAGCA
 CTGCCAGCAGATGGTCTGGAGCAAGCCACAGCAAAATCCCTTCTTGTGACATATGCAAAAACGGTTGTC
 ACCGAAGCTGGAACTTCTGCTGAAAGATAATGCTACTGAGGAGGAGATCCTCCATTACCTGGAGAAGACCT
 GTGCGTGGATTATGACTCCAGCCTGTGAGCCTTGTGCAAGGAGGTGGTTGACTCTTACCTGCCTGTGCAT
 CCTGGACATGATTAAGGGGGAGATGAGCAACCCCGGGGAAGTGTGCTCTGCGCTCAACCTCTGCCAGTCC
 CTTCAGGAGTACTTGGCCGAGCAAAACCAGAGACAGCTGGAGTCCAACAAGATCCCGGAGGTGGACCTGG
 CCCGCGTGGTTGCCCTTTCATGTCCAACATCCCTCTCCTGCTGTACCCTCAGGATCGGCCTCGCAGCCA
 GCCCGAGCCAAAGCTAACGAGGACGTCTGCCAGGACTGTATGAAGTTGGTACTGACATCCAGACTGCT
 GTGAGGACCAACTCCAGCTTTGTCCAGGGCTTGGTGGACCACGTC AAGGAGGATTGTGACCGCTCGGGC
 CAGGCGTGTCTGACATATGCAAGAACTATGTTGACCAGTATTCTGAGGTGCGCGTCCAGATGATGATGCA
 CATGCAACCCAAGGAAATCTGTGTGATGGTTGGCTTCTGTGATGAGGTCAAGAGAGTGCCATGAGGACT
 CTGGTCCCCGCCACTGAGGCCATCAAGAATATCCTCCCTGCCCTGGAGCTGACGGACCCCTATGAGCAGG
 ATGTGATCCAGGCCAAAATGTGATTTTCTGCCAAGTTTGTGACGTTGTGATGCGCAAGTTGTCTGAACT
 GATTATCAACAATGCCACTGAGGAATCTAATTAAGGTTTGTGAGTAAAGCCTGCTCCCTGCTCCCTGCT
 CCTGCTTCAACCAAGTCCAGGAAGTGTGTAACATTTGGCCCTCTCTGTTGGACGCTCCTCATGCATG
 AAGTGAACCCGAACCTTCTGTGCGGTGTGATCAGCCTCTGTTCTGCCAACCCGAATTTGGTGGGACCT
 TGAACAACCTGCAGCAGCCATTGTATCTGCACTGCCAAAGAGCCTGCACCGCCAAAACAGCCTGAAGAG
 CCCAAGCAGTCTGCATTGCGCGCCCATGTGCTCCTCAGAAGAACGGGGGTTCTGTGAGGTGTGAAGA
 AGCTGGTCATCTATTTGGAACATAACCTGGAGAAAAACAGCACCAAGGAGGAGATCCTGGCTGCACTTGA
 GAAGGGCTGCAGCTTCTGCCAGACCCTTACCAGAAGCAGTGTGATGAATTTGTGGCTGAGTATGAGCCC
 TTAAGCTGCTGCTGTTGGAGGTGATGGATCCTTCTTTGTGTGCTCGAAAATTGGAGTCTGCCCTT
 CTGCTATAAGCTGCTGCTGGAAACCGAGAAGTGTGTGGGGCCAGGCTACTGGTGTGCAACATGGA
 GACTGTGCCCGATGCAATGCTGTGCATCATTGCAAACGCCATGTGTGGAAC

ACGCGTACGCGGCCGCTCGAGCAGAACTCATCTCAGAAGAGGATCTGGCAGCAAATGATATCCTGGATT
 ACAAGGATGACGACGATAAGGTTTAA

Protein Sequence:

>RR208641 representing NM_013013
 Red=Cloning site Green=Tags(s)

MYALALLASLLVTALTSPVQDPKICSGGS AVVCRDVKTA VDCRAVKHCQQMVWSKPTAKSLPCDICKTVV
 TEAGNLLKDNATEEEILHYLEKTCAWIHDSLSASCKEVVDSYLPVILDMIKGEMSNPGEVCSALNLCQS
 LQEYLAEQNRQLESNKIPEVDLARVVAPFMSNIPLLLYPQDRPRSQPQPKANEDVCQDCMKLVTDIQT
 VRTNSSVFQGLVDHVKEDCDRLGPGVSDICKNYVDQYSEVAVQMMHMMPKEICVMVGFCEVKRVPMT
 LVPATEAIKNILPALELTDPEYQDVIQAQNVIFCQVCQLVMRKLSELINNATEELLIKGLSKACSLPA
 PASTKQCQEVLVTFGPSLLDVLMEHVNPFLCGVISLCSANPNLVGTLEQPAAAIVSALPKEPAPPKQPEE
 PKQSALRAHVPPQKNGGFCEVCKKLVIIYLEHNLEKNSTKEEILAALEKGC SFLPDPYQKQCDEFVAEYEP
 LLLLEILVEVMDPSFVCSKIGVCP SAKLLLGTEKCVWGPYWCQNMETAARCAVDHCKRHVWN

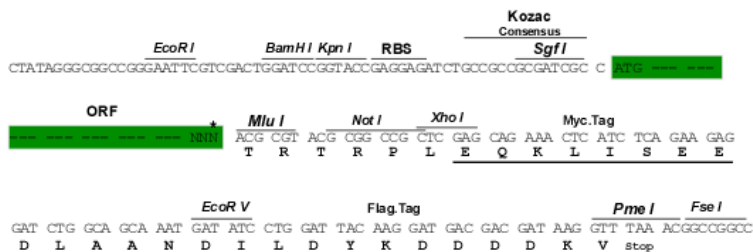
TRTRPLEQKLISEEDLAANDILDYKDDDDKV

Restriction Sites:

Sgfl-MluI

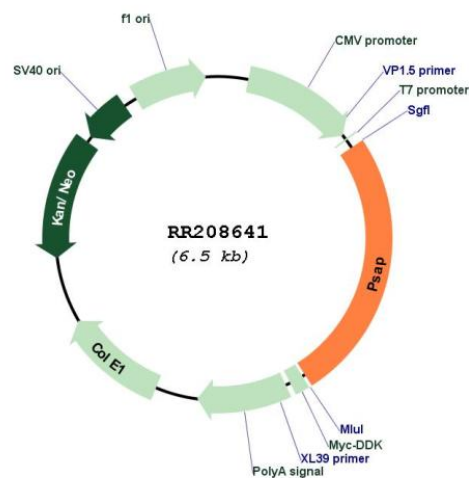
Cloning Scheme:

Cloning sites used for ORF Shuttling:



* The last codon before the Stop codon of the ORF

Plasmid Map:



ACCN:	NM_013013
ORF Size:	1662 bp
OTI Disclaimer:	The molecular sequence of this clone aligns with the gene accession number as a point of reference only. However, individual transcript sequences of the same gene can differ through naturally occurring variations (e.g. polymorphisms), each with its own valid existence. This clone is substantially in agreement with the reference, but a complete review of all prevailing variants is recommended prior to use. More info
OTI Annotation:	This clone was engineered to express the complete ORF with an expression tag. Expression varies depending on the nature of the gene.
Components:	The ORF clone is ion-exchange column purified and shipped in a 2D barcoded Matrix tube containing 10ug of transfection-ready, dried plasmid DNA (reconstitute with 100 ul of water).
Reconstitution Method:	<ol style="list-style-type: none">1. Centrifuge at 5,000xg for 5min.2. Carefully open the tube and add 100ul of sterile water to dissolve the DNA.3. Close the tube and incubate for 10 minutes at room temperature.4. Briefly vortex the tube and then do a quick spin (less than 5000xg) to concentrate the liquid at the bottom.5. Store the suspended plasmid at -20°C. The DNA is stable for at least one year from date of shipping when stored at -20°C.
RefSeq:	NM_013013.2 , NP_037145.2
RefSeq Size:	2576 bp
RefSeq ORF:	1665 bp
Locus ID:	25524
UniProt ID:	P10960
Cytogenetics:	20q11
MW:	61.2 kDa
Gene Summary:	may play a role in glycolipid transport during spermatogenesis [RGD, Feb 2006]