

## Product datasheet for **RR208639**

### **Msto1 (NM\_001106443) Rat Tagged ORF Clone**

#### **Product data:**

Product Type:	Expression Plasmids
Product Name:	Msto1 (NM_001106443) Rat Tagged ORF Clone
Tag:	Myc-DDK
Symbol:	Msto1
Synonyms:	RGD1306110
Mammalian Cell Selection:	Neomycin
Vector:	pCMV6-Entry (PS100001)
E. coli Selection:	Kanamycin (25 ug/mL)



[View online »](#)

**ORF Nucleotide Sequence:**

>RR208639 representing NM\_001106443  
 Red=Cloning site Blue=ORF Green=Tags(s)

TTTTGTAATACGACTCACTATAGGGCGGCCGGAATTCGTCGACTGGATCCGGTACCGAGGAGATCTGCC  
 GCC**CGGATCGCC**

ATGGCGGGCGGGCCCGGAGGTGCTCAGCTGCAGTTGGACATTTCCGGGTTTCGTCGGGGCGCACT  
 GGTGGAACCAGCAGGATGCTGCGTTGGGACGCACGACCGAGGGCGAAGAGTCGCCAGGCGAGCTGTGCC  
 GGACGTCTTGATCGAAGTGGCCGGACACTGCATGGCCAGGAAACCTATACACCTCGACTCATCCTCATG  
 GACCTCAAAGGCAGTCTGAATACCTTAAAGGAAGAAGGCAGCCTCTACAGGGACCGACAGCTAGAGGCTG  
 CAATAGCATGGCAGGGGAAGCTCACCACACACAGAGAAGAGGCCAACTCAAAGAACCCGAACCTCCAGGA  
 CCTTCTGAGTGCAGAGGGAGTGTGAGTGTGATGGTGCCTTGAGGGCGAAACTGATCCAGAATGGCAA  
 GAGAACAGCATCAAAGTCTGGTCAGACTTCTCCGAGTCCATCTCCATCCACGGAGCATCTGTGTGATTC  
 AGAAGTACAACCATGACGGTGTGACCGGCCGGCTGGAGGCTTTTGCCAAAGGGGAGAGTGTCTGAAGGA  
 ACCCAGTACTTGAAGAGCTGGAGGACAGGCTGCATTTCTATGTGGAAGATGTGATTACTTGCAGGGC  
 TTCCAGATCCTGTGTGACTGCATGATGGCTTTTCTGGAGTAGGTGCTAAAAGTGCAGAATTACTACAAG  
 ACGAGTATTCAGGGCGCGGAGTACTAACCTGGGGTCTGCTGCCTGGTCCCTACAGTCTTGGGGAGCCCA  
 GAAAAATATCTATCGTCTCTTAAACACAGCATTGGTCTGGTGCACCTTGTGGGTACAGCTCTTTCGTC  
 TGTCCTTGTCCCTTGGAGGGAACCTGGGCTGCGACCCAAGCCACCTGTCAACTCCCTTACCTTCATT  
 ATGATGCCACTCTGCCCTCCACTGTAGCGCTATCCTGGTACAGCCCTGGACACGGTTACCGTTCCCTA  
 TCGCCTCCGCTCCTCCACAGTCAGCATGGCTCACTTGGCTGATGTGCTAAGTTTCTCTGGGAAGAAGGTG  
 GTGACAGCAGAAGCCATCATCCCTTCCCACTGGTCCGAGGCCAGTCACTTCTGACATTCTCATGCAAC  
 TTGGAGAAGCCACCCCGTGGACCTCCCTGTCTGCATGCGGTGATCTGCCGGACATCGGTGCTTTGCCA  
 GTCTGTGGTGTCTAGGGGCATAGACAGAGCTAGCCACACCAGTAAGCTCAACCCAGGGACACCTTTGCC  
 TCCACTCTCCATGCGTGTGCTCTGGAGAAGAAGTCTTGGCCAGTACTTAGAGCAGCAGCACCTAGGG  
 TCTTGAGTTCGTATATCTGCTGCTGACACCCTGCAAAATGGCTCCTCCGTACCCACACTTCTTCTCAAG  
 CTTCAAGTCAAGAAAGGTTGGCCATGGACGGGGCCCAAGGGCGCAGCAGTGCAGAGCATCCCTGTGTT  
 GGGGCTTGCCTCAACTTATCCTTGCAGCGGACACTAAGAGACTTGGGTGACGAGCTCGCCAGACTTG  
 ACCTGCGGCGTGGGCTAGCTTATGACGCGGGGTGGAGCAGGATGACATGGAAGAGCTGCTGCAGGA  
 GCTACACAGCCTGGCCAGTGTACCAGGAGGGCGGGCCTTTCCAAC

**ACGCGT**ACGCGGCCGCTCGAGCAGAAACTCATCTCAGAAGAGGATCTGGCAGCAAATGATATCCTGGATT  
 ACAAGGATGACGACGATAAGGTTTAA

**Protein Sequence:**

>RR208639 representing NM\_001106443  
 Red=Cloning site Green=Tags(s)

MAGGAREVLTQLGHFAGFVGAHWWNQDAALGRTEGEESPGELCPDVL YRSGRTLHGQETYPRLILM  
 DLKGSNLTKKEEGLYRDRQLEAAIAWQKLTTHREEANSKNPNLQDLLSAEGLVSSDGALRAKLIQNGK  
 ENSIKVWSDFLRVLHPRISICVIQKYNHDGETGRLEAFGQGESVLKEPRYLEELEDRLHFYVEECDYLQG  
 FQILCDLHDGFSGVGAKTAELLQDEYSRGRVLTWGLLPGPYSLGEPQKNIYRLLNTAFGLVHLAGYSSFV  
 CPLSLGGNLGLRPKPPVNFYLYHDATLPFHCSAILATALDTVTVPYRLRSSTVSMHLADVLSFSGKKV  
 VTAEAIIPFPLVRGQSLPDILMQLGEATPWTSLSACGDSAGHRCFAQSVVLRGIDRASHTSKLNPGTPLP  
 STLHACASGEEVLAQYLEQQHPRVLSSSYLLLTPCKMAPPYPHFFSSFQKGLAMDGAPKGAAVQSIQV  
 GALRSTSSLQRTLRLDGLDELARLDLRRWASFMDAGVEQDDMEELLQELHSLAQCYQEGGGLSN

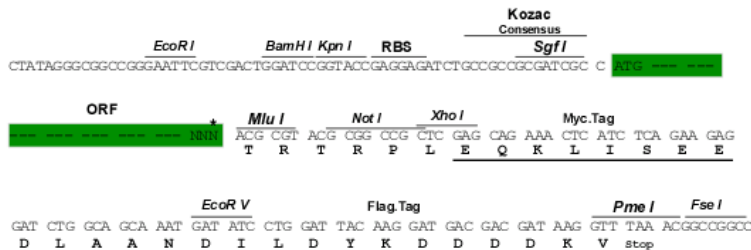
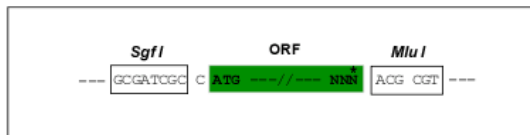
**TR**TRPLEQKLISEEDLAANDILDYKDDDDKV

**Restriction Sites:**

Sgfl-MluI

**Cloning Scheme:**

Cloning sites used for ORF Shutting:



\* The last codon before the Stop codon of the ORF

**ACCN:** NM\_001106443

**ORF Size:** 1659 bp

**OTI Disclaimer:** The molecular sequence of this clone aligns with the gene accession number as a point of reference only. However, individual transcript sequences of the same gene can differ through naturally occurring variations (e.g. polymorphisms), each with its own valid existence. This clone is substantially in agreement with the reference, but a complete review of all prevailing variants is recommended prior to use. [More info](#)
**OTI Annotation:** This clone was engineered to express the complete ORF with an expression tag. Expression varies depending on the nature of the gene.

**Components:** The ORF clone is ion-exchange column purified and shipped in a 2D barcoded Matrix tube containing 10ug of transfection-ready, dried plasmid DNA (reconstitute with 100 ul of water).

**Reconstitution Method:**

1. Centrifuge at 5,000xg for 5min.
2. Carefully open the tube and add 100ul of sterile water to dissolve the DNA.
3. Close the tube and incubate for 10 minutes at room temperature.
4. Briefly vortex the tube and then do a quick spin (less than 5000xg) to concentrate the liquid at the bottom.
5. Store the suspended plasmid at -20°C. The DNA is stable for at least one year from date of shipping when stored at -20°C.

**RefSeq:** [NM\\_001106443.1](#), [NP\\_001099913.1](#)
**RefSeq Size:** 1972 bp

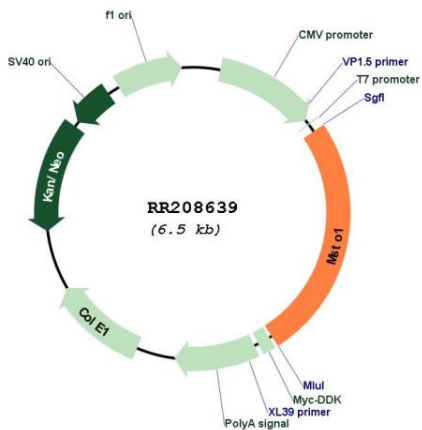
**RefSeq ORF:** 1662 bp

**Locus ID:** 295237

**Cytogenetics:** 2q34

MW: 60.6 kDa

Product images:



Circular map for RR208639