

## Product datasheet for **RR208633**

### Scly (NM\_001007755) Rat Tagged ORF Clone

#### Product data:

**Product Type:** Expression Plasmids  
**Product Name:** Scly (NM\_001007755) Rat Tagged ORF Clone  
**Tag:** Myc-DDK  
**Symbol:** Scly  
**Synonyms:** MGC94824  
**Vector:** pCMV6-Entry (PS100001)  
**E. coli Selection:** Kanamycin (25 ug/mL)  
**Cell Selection:** Neomycin  
**ORF Nucleotide Sequence:** >RR208633 representing NM\_001007755  
**Red=Cloning site Blue=ORF Green=Tags(s)**

TTTTGTAATACGACTCACTATAGGGCGGCCGGAATTCGTCGACTGGATCCGGTACCGAGGAGATCTGCC  
GCC**CGATCGCC**

ATGGACGTGGCGCGGAATGGCGCGGGGCAGTGTGGAGAGCCCGCCCAACAGGAAGGTCTATATGGACT  
ACAATGCCACCACACCTCTAGAGCCCGAAGTCATCCAGGCTGTGACGGAAGCCATGAAAGAAGCCTGGGG  
AAACCCAGCAGCTCATATGTAGCAGGTAGGAAGGCCAAGGACATTATAAACACAGCTCGGGCAAGCCTG  
GCCAAGATGATAGGGGAAAGCCCGAGGACATCATCTTCACTTCTGGGGGCACCGAGTCCAATAATTTAG  
TAATCCACTCTACGGTGAGATGCTTCCATGAGCAGCAGACCCCTGCAGGGGCGCACGGTTGACCAGATCAG  
CCCTGAGGAGGGGACCAGGCCCATTTTATCACTTGCACGGTGGAGCATGACTCCATCCGGCTGCCCTG  
GAGCACCTGGTGGAGATCAAGTGGCAGAGGTCACCTTTGTCCCAGTGTGCAAGGTAATGGGCAGGTAG  
AAGTTGAGGATACCTGGCCGCTGTCCGTCCCACAACATGCCTTGTGACCATCATGTTGGCCAATAACGA  
GACTGGTGTATCATGCCATCTCTGAGATCAGTCGTCGATTAAGCCCTGAACCAGATCCGGGCTGCC  
TCGGGGTACCCCGAGTCTGGTGCACACAGACGCTGCTCAGGCACTGGGAAAAGGCGAGTGGATGTCG  
AGGACCTGGCGTGGACTTCTGACCATCGTGGGCATAAAGTTCTACGGCCCGAGGATCGGTGCTGTGTA  
TGTGCGAGGGTTCGGTAACTTACCCCTGTACCCCATGCTGTTTGGAGGTGGACAAGAGCGGAATTTTC  
AGGCCAGGACCGAGAACACGCCATGATTGCTGGCCTTGGGAAGGCTGCGGATCTGGTGTGAGAACT  
GCGAGACTTATGAGGCCACATGAGAGACATCCGGGATTACCTGGAGGAGAGGCTGGAGGCTGAATTTGG  
TAAGAGAAATCCATTTGAACAGCCGCTTTCCAGGAGTGGAGAGGCTTCCGAACACCTGCAACTTTCCATC  
CAGGGGTCCAGCTTCGAGGGTACATGGTCTTGCACAGTCCAGACACTGCTGGCCAGCGTGGAGCTT  
CATGCCACTCGGATCATGAGACCGCCATCCCCAGTGTGCTGAGCTGTGGTATTCCTGTGGATGTGGC  
CCGGAACGCAGTCCGGCTCAGTGTGGCCGCGAGTACCACTAGGGCTGAAGTGGACCTCATCGTCAGGAC  
CTGAAGCAGGCCGTGAACCAGCTGGAAGCCCGGTC

**ACGCGT**ACGCGGCCGCTCGAGCAGAACTCATCTCAGAAGAGGATCTGGCAGCAAATGATATCCTGGATT  
ACAAGGATGACGACGATAAGGTTAA



Protein Sequence: >RR208633 representing NM\_001007755  
 Red=Cloning site Green=Tags(s)

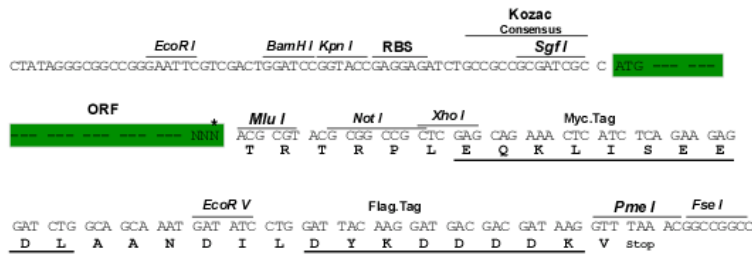
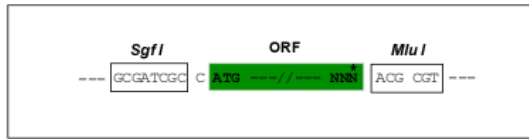
MDVARNGARGSVESPPNRKVYMDYNATTPLEPEVIQAVTEAMKEAWGNPSSSYVAGRKAKDIINTARASL  
 AKMIGGKPDIIIFTSGGTESNNLVIHSTVRCFHEQTLQGRVDQISPEEGTRPHFITCTVEHDSIRLPL  
 EHLVEDQVAEVTFVPVSKVNGQVEVEDILA AVRPTTCLVTIMLANNETGVIMP ISEISRRIKALNQIRAA  
 SGLPRVLVHTDAAQALGKRRVDVLDGVDFLTI VGHKFGYPRIGALYVRGVGKLTPLYPMLF GGGQERNF  
 RPGTENTPMIAGLGAADLVSENCETYEAHMRDIRDYLEERLEAEFGKRIHLNSRFPGVERLPNTCNFSI  
 QGSQLRGYMVL AQCTLLASV GASCHSDHEDRSPVLLSCGIPVDVARNAVRLSVGRSTTRAEVDLIVQD  
 LKQAVNQLGEPV

TRTRPLEQKLISEEDLAANDILDYKDDDDKV

Restriction Sites:  
 Cloning Scheme:

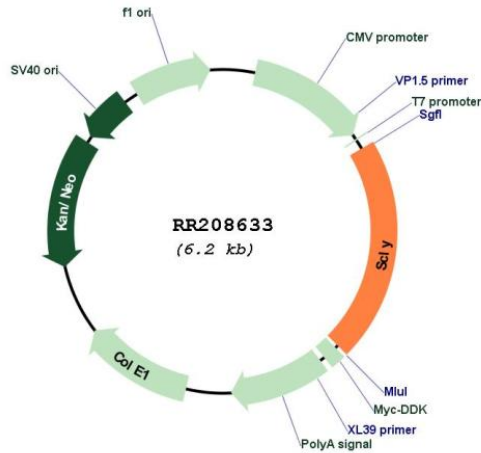
SgfI-MluI

Cloning sites used for ORF Shuttling:



\* The last codon before the Stop codon of the ORF

Plasmid Map:



ACCN: NM\_001007755

<b>ORF Size:</b>	1296 bp
<b>OTI Disclaimer:</b>	The molecular sequence of this clone aligns with the gene accession number as a point of reference only. However, individual transcript sequences of the same gene can differ through naturally occurring variations (e.g. polymorphisms), each with its own valid existence. This clone is substantially in agreement with the reference, but a complete review of all prevailing variants is recommended prior to use. <a href="#">More info</a>
<b>OTI Annotation:</b>	This clone was engineered to express the complete ORF with an expression tag. Expression varies depending on the nature of the gene.
<b>Components:</b>	The ORF clone is ion-exchange column purified and shipped in a 2D barcoded Matrix tube containing 10ug of transfection-ready, dried plasmid DNA (reconstitute with 100 ul of water).
<b>Reconstitution Method:</b>	<ol style="list-style-type: none"><li>1. Centrifuge at 5,000xg for 5min.</li><li>2. Carefully open the tube and add 100ul of sterile water to dissolve the DNA.</li><li>3. Close the tube and incubate for 10 minutes at room temperature.</li><li>4. Briefly vortex the tube and then do a quick spin (less than 5000xg) to concentrate the liquid at the bottom.</li><li>5. Store the suspended plasmid at -20°C. The DNA is stable for at least one year from date of shipping when stored at -20°C.</li></ol>
<b>RefSeq:</b>	<a href="#">NM_001007755.1</a> , <a href="#">NP_001007756.1</a>
<b>RefSeq Size:</b>	2161 bp
<b>RefSeq ORF:</b>	1299 bp
<b>Locus ID:</b>	363285
<b>UniProt ID:</b>	<a href="#">Q68FT9</a>
<b>Cytogenetics:</b>	9q36
<b>MW:</b>	47.3 kDa
<b>Gene Summary:</b>	Catalyzes the decomposition of L-selenocysteine to L-alanine and elemental selenium. [UniProtKB/Swiss-Prot Function]