

Product datasheet for **RR208587**

Adgre5 (NM_001012164) Rat Tagged ORF Clone

Product data:

Product Type:	Expression Plasmids
Product Name:	Adgre5 (NM_001012164) Rat Tagged ORF Clone
Tag:	Myc-DDK
Symbol:	Adgre5
Synonyms:	Cd97
Mammalian Cell Selection:	Neomycin
Vector:	pCMV6-Entry (PS100001)
E. coli Selection:	Kanamycin (25 ug/mL)



[View online »](#)

ORF Nucleotide Sequence:

>RR208587 representing NM_001012164
 Red=Cloning site Blue=ORF Green=Tags(s)

TTTTGTAATACGACTCACTATAGGGCGGCCGGGAATTCGTCGACTGGATCCGGTACCGAGGAGATCTGCC
 GCC**CGGATCGCC**

ATGAGGGGCGTCAGCTGTACCTCTGCTCGTGTATGCTTTGTACCGAATCTCTCAGGAGTTGGAACCC
 AAAAGGCATCGGGCTGTGCCAGGTGGTGCCTCCCAACTCAGAATGTGAGAGTAACAGAAGCTGTAAAGTG
 CAAGCCAGGCTTCAACTCCTCCTCGCCGACGGTTTGATCACTAACCTGCACAGAGCTGTGAAGACATC
 AACGAGTGTATACAAACCGATAATCTCTGTGGACCGTATGCCATGTGTATGAACTCAGAGGGGAGCTACT
 ACTGCGTCTGCAACCTGGGATACAAGCTCCTTTCTGGGGCGGAATCTTTACTAATAAGAGTGAGAACAC
 GTGTCAAGTCTGTCTCTTCCAGCATCCGTGGACACTGGGATGATACCTGTGCCCTCCAGCATCCAC
 ACAGTTCTACTGCCAGAAAGCTCCCGAGCAGCCAACTACAGTGCACCCACGGACACAGCTGGGAGACT
 CAGGGGAAAGGACCCCAAGGATGTGAATGAATGCACCTCTGGGAAAACAGTGCCACCAGTCCACGCA
 CTGCATCAACAAGATGGGCGGCTATTCTGCATCTGTCCGGAGGCTGGAAACCTGCTCCTGGATCCCC
 AATGGCCAGTCAACACAGTGTGTGAAGATGTGGATGAGTGCAGTTCTGGCCAACATCAATGCCACAGTT
 CCGCCATCTGCAAAAATATCCCTGGCTCCTACAAGTGGCCTGCCCTCCAGGTTGGATAGCAATTCCTCG
 TGATAAGCCAAATAACACCGTATGCCAAGAACCACATTTCCCTACCTGGACGCTGCTGCCACAGCCAC
 AGCCAGGCTCTGTTGAGTTTCTCTGTTGAAGTCCAGAATCTGCTCAGAGACTTCAATCCAGCCACGGTCA
 ACTACACCATCCAGAACTCATCGAGGCTGTGGACAACTGCTGGAAATGCCATGGATATAGGGACTCA
 AACCCAACAAGTTGCCACCCAGTTGCTCTCGAACCTGGAGCAAAGCCTTCGGACCTTGGCCAGTTCTTA
 CCCAAAGGCCCTTTCACCTACAAGTCCCCTTCAAACACTGAACTGGCCCTGATGGTCAAGGAGCAAGACA
 ACAAGATGTTACCACAGTGCACCACAGCCAAGCTTGGATGCAGCTGGACTGGGCTGTGACAGCTGGAGC
 CAAAAGCTCAGAAAATGGCTACTCAGTGGCGGGCATCCTGTCCAGTCCAACATACAAAAGCTGCTGGCC
 AACACCTCCTTGAACCTGGAGCAGAAGAGGGACACCTTGAAGACCTCTATGGAAGCCCGTTTCAGAGCG
 TCACACTTACGTTCTCTCGAACATCAACGCCATCTTTCTGACCAACACAGACACTGAGAAGCTCGCCTC
 AGATGTCACGTTCAAGTTCAACCTAACTTCTGTGAAGTCACTTAAGGCACGTGAAGAACTGATGTGTGCC
 TACTGGAAAAGCCATGACAATGGGAGTGGGTCTGGGCCACTGACGGCTGCTCAATGAATGACACTGGCT
 TCTGCCACTGCAACCACCTGACCAGCTTGTCTCCTAATGGCTCAGTACCACGTGCAGGACCCAAGGCT
 GGAAGTATCACAAGGTGGGGTTGCTGTCTCCCTGGTCTGCCTGCTGTCTGTATCCTGACCTTCTCTG
 CTGGTGAAGCCATCCAGAGTTCTCGAACCATGGTGCACCTGCACCTGTGCATCTGCCTTTCTCTGGGCT
 CAGTCATCTTCTGGTTGGTGTGAGAATGAAGGGGGCGAGGTGGTCTGCGCTGCCGCTGGTGGCTAT
 GCTGCTGCATTTCTGCTTCTGGCCGCTTCTGCTGGATGGCCCTGGAGGGTGTGGAGCTCTACTTCTCTG
 GTGGTGGCTGTGTTCCAGGGCAAGGCCTGAGCACGTGGCACCCTGTCTGGTTGGCTATGGGGTGCCCC
 TCCTCATCGTGGCCATCTCGGCAGCTGCCAGAATGGACGGCTATGGGCATGCGACCTACTGCTGGTTGGA
 CTTTCAGGAAGCAGGGCTTCTCTGGAGCTTTTCGGGCCCTGTGGCCTTCAATTTTCTGCAATGCTGCC
 ATTTTTGTGATCACTGTCTGGAAGCTCACCAAGAAGTTTTCTGAAATCAACCCAAACATGAAGAAATTA
 GGAAGGCGAGAGTGTGACCATCACAGCATTGCCAGCTCCTCGTGTGGCTGCACCTGGGGCTTCGG
 CCTGTTCTCTTCAACCCTCATAGCACATGGCTGTCTACATCTTACCCTGCTCAACTGCCTGCAGGGC
 CTTTTCTCTATGTGACGCTCTGCCTGCTCAACAAAAGGTGAGGGAAAGTACTGGAAAATGGGCCTGCA
 TGGTACCAGGAAACAAGTACACAGAGTTCACCTCTCCACAACAGGCACTGGCACCAGTCAAACACGGAC
 CCTCAGGCCCTCAGAATCGGGATG

ACGCGTACGCGGGCGCTCGAGCAGAACTCATCTCAGAAGAGGATCTGGCAGCAATGATATCCTGGATT
 ACAAGGATGACGACGATAAGGTTTAA

Protein Sequence: >RR208587 representing NM_001012164
Red=Cloning site Green=Tags(s)

MRGV SCHLLLVL CFV PNL SGVGTQKASGCARWCPPNSECESNRSCCKPGFNSSSPDGLITNPAQSCEDI
NECIQTDNLCGPYAMCMNSEGSYYCVCNLGYKLLSGAESFTNKSENTCQVSVLFPASVDTGMIPVPSSIH
TVPTARKLPEQPTTVHPRTQLGDSGERTPKDVNECTSGQNQCHQSTHCINKMGGYSCICRRGWKPAPGSP
NGPVNTVCEDVDECSSGQHCHSSAICKNIPGSYKCRCPGWIAIPRDKPNNTVCQEPHFPTWLLPTAH
SQALLSFSVEVQNLLRDFNPATVNYTIQKLEAVDKLLEMPMDIGTQTQQVATQLLSNLEQSLRTLAQFL
PKGPFTYKSPSNTTELALMVKEQDNKDVTTVHHSQAWMLDWA VTAGAKSSENGYSVAGILSSPNIQKLLA
NTSLNLEQKRDTLEDLYGSPVQSVTLTFLSNINAIFLTNTDTEKLASDVTFKFNLT SVKSLKAREELMCA
YWKSHDNGSGSWATDGC SMNDTGFCHCNHLTSFAVLMAQYHVQDPRELEITKVGLLLSLVCLLLCILTF
LVKPIQSSRTMVHLHLCICLFLGSVIFLVGVENEGGEVGLRCLVAMLLHFCFLAAFCWMALEGVELYFL
VVRVFQGGQLSTWHRCLVGYGVPLLIVAI SAAARM DGYGHATYCWLDFRKQGF LWSFGPVAFIIFCNA
IFVITVWKLTKKFSEINPNMKLRKARVLTITAI AQLLVLGCTWGFGLFLFNPHSTWLSYIFTLNCLQG
LFLYVTLCLLNKKVREEYKWACMVTGNKYTEFTSSTTGTGTSQTRTLRPSESGM

TRTRPLEQKLISEEDLAANDILDYKDDDDKV

Chromatograms: https://cdn.origene.com/chromatograms/ja3158_f08.zip

Restriction Sites: Sgfl-Mlul

Cloning Scheme:


ACCN: NM_001012164

ORF Size: 2475 bp

OTI Disclaimer: Due to the inherent nature of this plasmid, standard methods to replicate additional amounts of DNA in E. coli are highly likely to result in mutations and/or rearrangements. Therefore, OriGene does not guarantee the capability to replicate this plasmid DNA. Additional amounts of DNA can be purchased from OriGene with batch-specific, full-sequence verification at a reduced cost. Please contact our customer care team at custsupport@origene.com or by calling 301.340.3188 option 3 for pricing and delivery.

The molecular sequence of this clone aligns with the gene accession number as a point of reference only. However, individual transcript sequences of the same gene can differ through naturally occurring variations (e.g. polymorphisms), each with its own valid existence. This clone is substantially in agreement with the reference, but a complete review of all prevailing variants is recommended prior to use. [More info](#)

OTI Annotation: This clone was engineered to express the complete ORF with an expression tag. Expression varies depending on the nature of the gene.

Components: The ORF clone is ion-exchange column purified and shipped in a 2D barcoded Matrix tube containing 10ug of transfection-ready, dried plasmid DNA (reconstitute with 100 ul of water).

Reconstitution Method:

1. Centrifuge at 5,000xg for 5min.
2. Carefully open the tube and add 100ul of sterile water to dissolve the DNA.
3. Close the tube and incubate for 10 minutes at room temperature.
4. Briefly vortex the tube and then do a quick spin (less than 5000xg) to concentrate the liquid at the bottom.
5. Store the suspended plasmid at -20°C. The DNA is stable for at least one year from date of shipping when stored at -20°C.

RefSeq: [NM_001012164.1](#), [NP_001012164.1](#)

RefSeq Size: 3046 bp

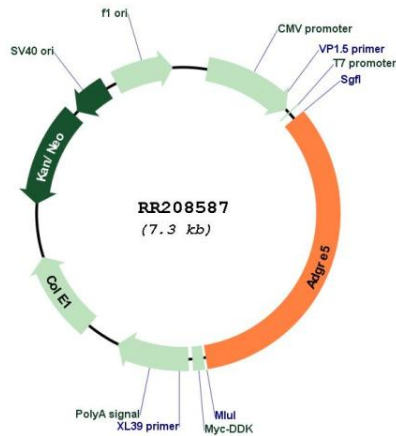
RefSeq ORF: 2478 bp

Locus ID: 361383

Cytogenetics: 19q11

MW: 91.1 kDa

Product images:



Circular map for RR208587