

Product datasheet for **RR208585**

Pafah1b2 (NM_022387) Rat Tagged ORF Clone

Product data:

Product Type:	Expression Plasmids
Product Name:	Pafah1b2 (NM_022387) Rat Tagged ORF Clone
Tag:	Myc-DDK
Symbol:	Pafah1b2
Synonyms:	MGC93124
Vector:	pCMV6-Entry (PS100001)
E. coli Selection:	Kanamycin (25 ug/mL)
Cell Selection:	Neomycin
ORF Nucleotide Sequence:	>RR208585 representing NM_022387 Red=Cloning site Blue=ORF Green=Tags(s)

TTTTGTAATACGACTCACTATAGGGCGCCGGAATTCGTCGACTGGATCCGGTACCGAGGAGATCTGCC
GCC**CGATCGCC**

ATGAGCCAAGGAGACTCAAACCCAGCAGCTATTCCACATGCAGCAGAAGATATCAAGGAGATGACAGGT
GGATGTCTCAGCACAATAGGTTTGTCTGGACTGCAAAGACAAAGAGCCGGACGTGCTGTTTGTGGGAGA
CTCCATGGTACAGTTGATGCAGCAGTACGAGATATGGCGGGAGCTGTTTTCCCACTTCATGCTCTTAAT
TTTGGAATTGGGGGAGACACAACACGACATGTTTTATGGAGACTAAAGAACGGAGAGCTGGAGAACATTA
AGCCTAAGGTCATTGTTGTCTGGGTAGGAACAAACAACCATGAAAATACAGCAGAAGAAGTAGCAGGTGG
AATTGAGGCTATCGTACAGCTTATAAACACGAGGCAGCCACAGGCCAAGATCATTGTACTGGGTCTGTTA
CCTCGAGGTGAGAAGCCCAACCTTTAAGACAAAAGAATGCCAAGGTGAACCAGCTTCTCAAGGTTTCCC
TGCCGAAGCTTGCCAATGTGCAGCTCCTGGATATAGATGGGGCTTCGTGCACTCGGACGGTGCCATCTC
CTGCCACGACATGTTTGATTTTCTTCATCTCACAGGAGGGGGCTATGCAAAGATCTGCAAACCCCTCCAT
GAACTGATCATGCAGTTGCTGGAGGAAACACCAGAGGAGAAGCAGACCACCATTGCT

ACGCGTACGCGGCCGCTCGAGCAGAACTCATCTCAGAAGAGGATCTGGCAGCAAATGATATCCTGGATT
ACAAGGATGACGACGATAAGGTTTAA



[View online »](#)

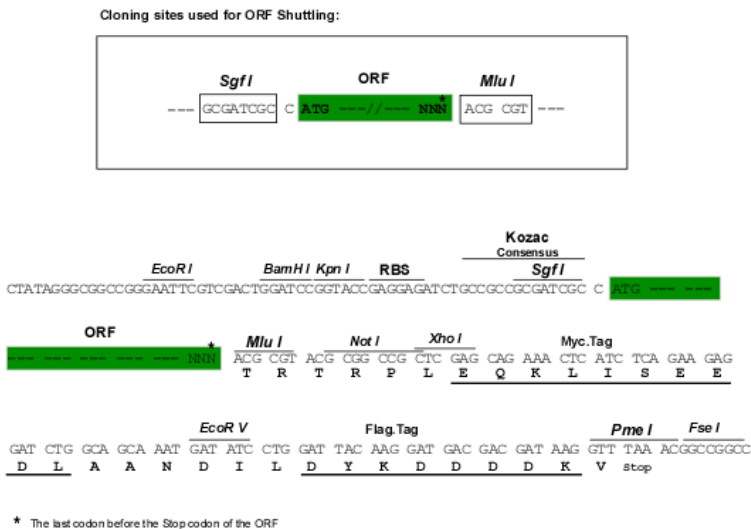
Protein Sequence: >RR208585 representing NM_022387
 Red=Cloning site Green=Tags(s)

MSQGDSNPAAIPHAAEDIQGDDRWSQHNRFLVDCKDKEPDVLFVGDMSVQLMQQYEIWRELF SPLHALN
 FGIGGDTTRHVLWRLKNGELENIKPKVIVVWVGTNNHENTAAEVAGGIEAIVQLINTRQPQAKIIVLGLL
 PRGEKPNPLRQNAKVNQLLKVSLPKLANVQLLDIDGGFVHSDGAISCHDMFDLHLTG GGYAKICKPLH
 ELIMQLLEETPEEKQTIIA

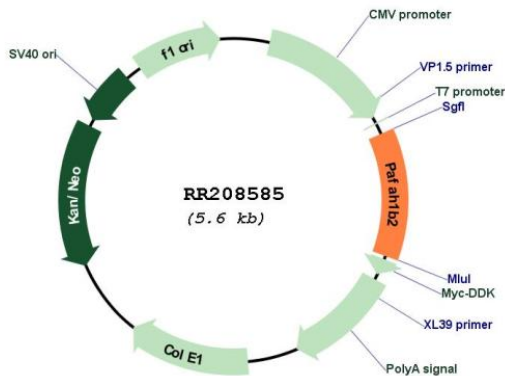
TRTRPLEQKLISEEDLAANDILDYKDDDDKV

Restriction Sites: Sgfl-MluI

Cloning Scheme:



Plasmid Map:



ACCN: NM_022387

ORF Size: 687 bp

OTI Disclaimer:	The molecular sequence of this clone aligns with the gene accession number as a point of reference only. However, individual transcript sequences of the same gene can differ through naturally occurring variations (e.g. polymorphisms), each with its own valid existence. This clone is substantially in agreement with the reference, but a complete review of all prevailing variants is recommended prior to use. More info
OTI Annotation:	This clone was engineered to express the complete ORF with an expression tag. Expression varies depending on the nature of the gene.
Components:	The ORF clone is ion-exchange column purified and shipped in a 2D barcoded Matrix tube containing 10ug of transfection-ready, dried plasmid DNA (reconstitute with 100 ul of water).
Reconstitution Method:	<ol style="list-style-type: none">1. Centrifuge at 5,000xg for 5min.2. Carefully open the tube and add 100ul of sterile water to dissolve the DNA.3. Close the tube and incubate for 10 minutes at room temperature.4. Briefly vortex the tube and then do a quick spin (less than 5000xg) to concentrate the liquid at the bottom.5. Store the suspended plasmid at -20°C. The DNA is stable for at least one year from date of shipping when stored at -20°C.
RefSeq:	NM_022387.3 , NP_071782.1
RefSeq Size:	1994 bp
RefSeq ORF:	690 bp
Locus ID:	64189
UniProt ID:	O35264
Cytogenetics:	8q22
MW:	25.6 kDa
Gene Summary:	subunit of the brain intracellular platelet-activating factor acetylhydrolase, which is composed of alpha1, alpha2, and beta subunits [RGD, Feb 2006]