

Product datasheet for **RR208582**

Lat2 (NM_173840) Rat Tagged ORF Clone

Product data:

Product Type: Expression Plasmids
Product Name: Lat2 (NM_173840) Rat Tagged ORF Clone
Tag: Myc-DDK
Symbol: Lat2
Synonyms: Ntal; Wbscr5
Vector: pCMV6-Entry (PS100001)
E. coli Selection: Kanamycin (25 ug/mL)
Cell Selection: Neomycin
ORF Nucleotide Sequence: >RR208582 representing NM_173840
 Red=Cloning site Blue=ORF Green=Tags(s)

TTTTGTAATACGACTCACTATAGGGCGCCGGAATTCGTCGACTGGATCCGGTACCGAGGAGATCTGCC
GCC**CGATCGCC**

ATGAATGCCGAGTTGGAGCTGCTGTGGCCACTGTCAGGACTGTTGCTGCTGCTCTTGGGGACCACAG
CTTGGCTGTGTCCAGTCTCCGCCAGGGTGAAGAGAAATGAGAAAATCTACGAGCAGAGGAACCA
GCAAGAAAATGAACAGAGCGTAGCCTCATCTCAGACGTAATCCCTGGCCAGGCCGGTGGCAGAGGACTC
CAGATGGACGCAGCCTCAAACAAGTCAATTTGAGAGGAAGAACAAGCTGCTTTTCTCCACCTGGAGGGTC
CTGAGTCCCTAGGTACCAGAATTCTACAAAGGAAGCAGACGGGAGTCTGATGCTGCCTATGTAGATCC
CATCCCCACAGACTACTACAAGTGGGATGTTTCCAGAAGCCCCAGAAGACAATGATTCCAACTCCTAC
GAGAATGTGCTCATCTGCAAGCCAGCACCCCCGAGTCAAGTACTGAGGAATCCGAGGATTACCAGAAT
CGGTATCCATCCTTCAGTGGCGAGAATCCAAGAGGACTATGGGTGCACGCACGTCCTCCATCAGGAAGCCC
AGACGAGGAGCCAGATTACGTGAATGGGGATGTGGCCACGACGGAGAAAATC

ACGCGTACGCGGCCGCTCGAGCAGAACTCATCTCAGAAGAGGATCTGGCAGCAAATGATATCCTGGATT
ACAAGGATGACGACGATAAGGTTTAA

Protein Sequence: >RR208582 representing NM_173840
 Red=Cloning site Green=Tags(s)

MNAELELLWPLSGLLLLLLLLTAWLCVQCSRPGVKNRNEIYEQRNQQENEQSVASSQTYSLARPVRTGL
QMDAASNKSFERNKLLFSHLEGPESPRYQNFYKGSRRSDAAYVDP IPTDYNNWGCFFQKPPEDNDSNSY
ENVLICKPSTPESGTEESDYQNSVSIQWRESKRTMGARTSPSGSPDEEPDYVNGDVATTEKI

TRTRPLEQKLISEEDLAANDILDYKDDDDKV

Restriction Sites: SgfI-MluI

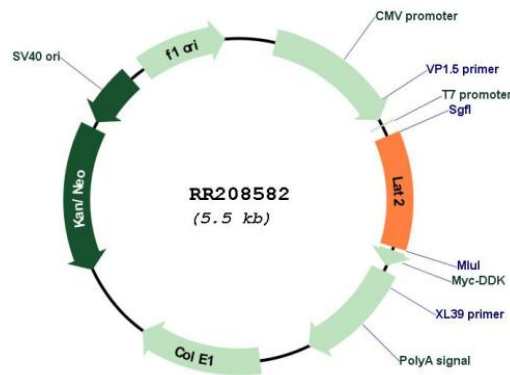


[View online »](#)

Cloning Scheme:



Plasmid Map:



ACCN: NM_173840

ORF Size: 612 bp

OTI Disclaimer: The molecular sequence of this clone aligns with the gene accession number as a point of reference only. However, individual transcript sequences of the same gene can differ through naturally occurring variations (e.g. polymorphisms), each with its own valid existence. This clone is substantially in agreement with the reference, but a complete review of all prevailing variants is recommended prior to use. [More info](#)

OTI Annotation: This clone was engineered to express the complete ORF with an expression tag. Expression varies depending on the nature of the gene.

Components: The ORF clone is ion-exchange column purified and shipped in a 2D barcoded Matrix tube containing 10ug of transfection-ready, dried plasmid DNA (reconstitute with 100 ul of water).

Reconstitution Method:

1. Centrifuge at 5,000xg for 5min.
2. Carefully open the tube and add 100ul of sterile water to dissolve the DNA.
3. Close the tube and incubate for 10 minutes at room temperature.
4. Briefly vortex the tube and then do a quick spin (less than 5000xg) to concentrate the liquid at the bottom.
5. Store the suspended plasmid at -20°C. The DNA is stable for at least one year from date of shipping when stored at -20°C.

RefSeq: [NM_173840.1](#), [NP_776212.1](#)

RefSeq Size: 615 bp

RefSeq ORF: 615 bp

Locus ID: 317676

UniProt ID: [Q8CGL2](#)

Cytogenetics: 12q12

MW: 23.1 kDa

Gene Summary: human homolog maps to the microdeletion region in Williams syndrome and may act as an adaptor for non T-cell immune response [RGD, Feb 2006]