

Product datasheet for **RR208568**

Impa1 (NM_032057) Rat Tagged ORF Clone

Product data:

Product Type: Expression Plasmids
Product Name: Impa1 (NM_032057) Rat Tagged ORF Clone
Tag: Myc-DDK
Symbol: Impa1
Synonyms: Impa1-L
Vector: pCMV6-Entry (PS100001)
E. coli Selection: Kanamycin (25 ug/mL)
Cell Selection: Neomycin
ORF Nucleotide Sequence: >RR208568 representing NM_032057
Red=Cloning site Blue=ORF Green=Tags(s)

TTTTGTAATACGACTCACTATAGGGCGGCCGGAATTCGTCGACTGGATCCGGTACCGAGGAGATCTGCC
GCC**CGGATCGCC**

ATGGCAGACCCCTTGGCAGGAGTGCATGGATTATGCAGTGATCCTCGCAAGACAAGCTGGAGAGATGATTC
GTGAAGCTCTAAAAATAAGATGGATGTCATGATTAAGTTCTCCAGCCGACTTGGTAACGTTACTGA
CCAAAAAGTTGAAAAGATGCTTATGTCTTCTATAAAGGAAAAATACCCATATCACAGTTTCATTGGTGAA
GAATCTGTGGCATCCGGGAAAAGACAGCTTCCAGAGCAGCCACGTGGATCATTGATCCATTGACG
GGACGACCAACTTTGTGCACCGTTTCCCTTTGTAGCTGTTTCGATTGGCTTCGTTGTAATAAAGAGAT
GGAGTTTGGAGTTGTATACAGCTGTGTGGAAGATAAGATGTATACGGGCAGGAAAGGAAAAGCGCCTTT
TGTAACGGTCAGAAGCTTCGGGTCTCGCAGCAGGAAGACATTACCAATCACTCTTGGTGACCGAGCTGG
GCTCGTCCAGAAAGCCGGAGACTTTGCGGATTGTTCTCTCCAACATGGAAAGGCTTTGCTCCATTCCAT
CCATGGAATCCGGAGTGTGGGACAGCGGCTGTTAATAATGTGCCTTGTGGCAACGGGAGGAGCGGATGCC
TATTACGAGATGGGATCCACTGCTGGGACATGGCTGGAGCTGGCATCATCGTCATAGAGGCTGGCGGAG
TGCTGCTGGATGTGACAGGTGGACATTGATTTGATGTCTCGGAGAATAATTGCTGCAAGTAATATAGC
ATTAGCAGAAAGAATAGCCAAAGAACTTGAGATAATACCTTTACAACGAGACGACGAAAGT

ACGCGTACGCGGCCGCTCGAGCAGAAACTCATCTCAGAAGAGGATCTGGCAGCAATGATATCCTGGATT
ACAAGGATGACGACGATAAGGTTTAA



[View online »](#)

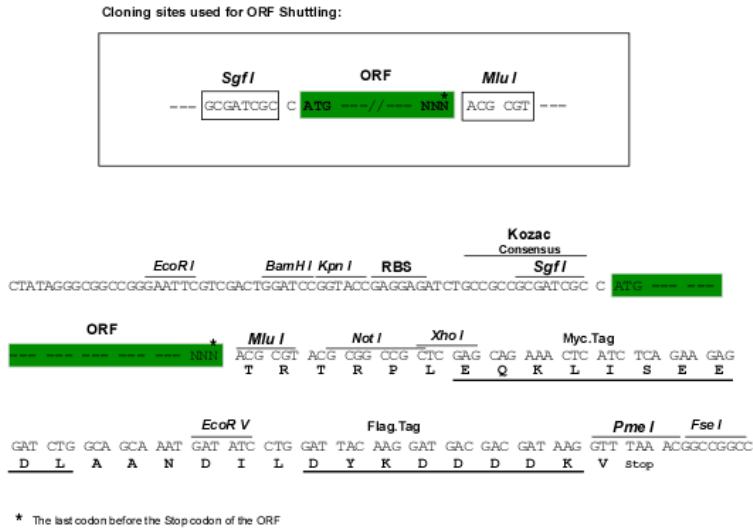
Protein Sequence: >RR208568 representing NM_032057
Red=Cloning site Green=Tags(s)

MADPWQECMDYAVILARQAGEMIREALKNKMDVMIKSSPADLVTVDQKVEKMLMSSIKEKYPYHSFIGE
 ESVASGEKTVFTEQPTWIIDPIDGTTNFVHRFPFVAVSIGFVVKEMEFVYVYSCVEDKMYTGRKKGKGF
 CNGQKLRVSQQEDITKSLLVTELGSSRPETLRIVLSNMERLCSIPHIGIRSVGTAAVNMLVATGGADA
 YYEMGIHCWDMAGAGIIVIEAGGVLLDVTGGPFDLMSRRIIAASNIALAERIAKELEIIPLQRDDES

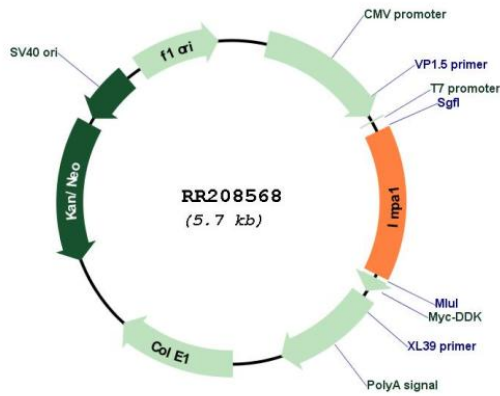
TRTRPLEQKLISEEDLAANDILDYKDDDDKV

Restriction Sites: Sgfl-MluI

Cloning Scheme:



Plasmid Map:



ACCN: NM_032057
 ORF Size: 831 bp

OTI Disclaimer:	The molecular sequence of this clone aligns with the gene accession number as a point of reference only. However, individual transcript sequences of the same gene can differ through naturally occurring variations (e.g. polymorphisms), each with its own valid existence. This clone is substantially in agreement with the reference, but a complete review of all prevailing variants is recommended prior to use. More info
OTI Annotation:	This clone was engineered to express the complete ORF with an expression tag. Expression varies depending on the nature of the gene.
Components:	The ORF clone is ion-exchange column purified and shipped in a 2D barcoded Matrix tube containing 10ug of transfection-ready, dried plasmid DNA (reconstitute with 100 ul of water).
Reconstitution Method:	<ol style="list-style-type: none">1. Centrifuge at 5,000xg for 5min.2. Carefully open the tube and add 100ul of sterile water to dissolve the DNA.3. Close the tube and incubate for 10 minutes at room temperature.4. Briefly vortex the tube and then do a quick spin (less than 5000xg) to concentrate the liquid at the bottom.5. Store the suspended plasmid at -20°C. The DNA is stable for at least one year from date of shipping when stored at -20°C.
RefSeq:	NM_032057.1 , NP_114446.1
RefSeq Size:	2075 bp
RefSeq ORF:	834 bp
Locus ID:	83523
UniProt ID:	P97697
Cytogenetics:	2q23
MW:	30.5 kDa
Gene Summary:	enzyme which controls the levels of brain inositol [RGD, Feb 2006]