

Product datasheet for **RR208565**

Brd4 (NM_001100903) Rat Tagged ORF Clone

Product data:

Product Type: Expression Plasmids
Product Name: Brd4 (NM_001100903) Rat Tagged ORF Clone
Tag: Myc-DDK
Symbol: Brd4
Vector: pCMV6-Entry (PS100001)
E. coli Selection: Kanamycin (25 ug/mL)
Cell Selection: Neomycin
ORF Nucleotide Sequence: >RR208565 representing NM_001100903
Red=Cloning site Blue=ORF Green=Tags(s)

TTTTGTAATACGACTCACTATAGGGCGGCCGGGAATTCGTCGACTGGATCCGGTACCGAGGAGATCTGCC
GCCCGATCGCC

ATGTCTACGGAGAGCGGCCCTGGGACAAGATTGAGAAATCTGCCAGTAATGGGGATGGACTAGAAACCT
CCCAAATGTCTACAACGACAGGCCAGGCCAACCCAGTCAGCAAATGCAGCCAGCACCAATCCTCCACC
CCCAGAGACCTCCAACCCTAACAGCCCAAGAGCCAGACCAACCAACTGCAATATCTGCTCAGAGTGGTG
CTCAAGACACTATGGAAACACCAGTTTGGGTGGCCTTTCCAGCAGCCTGTGGATGCCGTCAGACTGAACC
TCCTGATTACTATAAGATTATTAACAACCCATGGATATGGGAACAATAAAGAAGCGCTTGAAAAACAA
CTATTACTGGAATGCTCAGGAATGTATCCAGGACTTCAACTATGTTTACAAATGTTACATCTATAAC
AAGCCTGGAGATGACATCGTCTTAATGGCAGAAGCTCTGGAGAAGCTCTTCTGCAGAAAATCAATGAAC
TGCCTACAGAAGAAACCGAGATCATGATAGTCCAGGCAAAGGGACGAGGACGAGGGAGGAAAGAAACAGG
GACAGCAAAGCCTGGTGTATCCACGGTACCAACACAACCTCAAGCATCAACTTCTCCGACAGCCAGATG
CCTCAGCAGAACCCTCCTCCACCTGTGCAGGCCACAACCTACCCCTTTCCTGCTGTACCCAGACCTCA
TTGCCAGCCTCCTGTGATGACAATGGTGCCCCCAGCCACTTCAGACTCCTTACCGGTACCCCTCA
GCCACCACCCCACTGCTCCAGTTCACAGCCTGTGCAGAGTCAACCCTCCCATATTGCGACCACCCCA
CAGCCTGTGAAGACAAAGAAAGGGGTGAAGAGGAAAGCAGATACCACCACCCCAACCATCGACCCCA
TTCATGAGCCGCCTCACTGGCCCCGGAGCCCAAGACCGCAAGCTGGGTCTCGGGGGAGAGCAGCAG
ACCTGTGAAGCCCCAAAGAAGGATGTACCAGACTCCCAGCAGCACCAGGGCCAGAGAAGAGCAGCAAG
ATCTCTGAGCAGTGAAGTGTGCTGAGTGGCATCCTCAAGGAGATGTTTGCTAAGAAACATGCTGCCTATG
CCTGGCCTTTCTACAAGCCCGTGGATGTGGAGGCACTGGGTCTGCAGCACTACTGTGACATCATTAAACA
CCCCATGGACATGAGCACAATCAAGTCTAAACTAGAGTCCCGGGAGTACAGAGATGCCAGGAGTTTGGT
GCTGATGTCGATTGATGTTTCCAAGTCTACAAGTACAATCCCCTGACCATGAAGTGGTAGCCATGG
CTCGAAAACCTCCAGGATGTGTTTGAATGCGCTTTGCCAAGATGCCTGATGAGCCTGAAGAGCCAGTTGT
TACGGTGTCTCCCTGCAGTGCCACCCCTACAAGGTGGTAGCCCCACCCCTCATCTAGTGACAGCAGC
AGTGATAGTTCTCTGACAGTGACAGTTCCACTGACGACTCTGAGGAAGAGCGAGCCAGCGGCTGGCTG
AGCTCCAGGAGCAGCTCAAAGCCGTGCATGAGCAGCTTGACGCCCTCTCACAGCCCAACAGAACAAC
AAAGAAAAGGAGAAGGACAAGAAGGAAAAGAAAAGGAAAAGCACAAAAAGAAAGAAGAAATGGAGGAA



[View online »](#)

AATAAAAAAGCAAGCCAAGGAACTTCTCCAAAAAGACAAAGAAAAATAACAGCAGCAACAGCAATG
TGAGCAAGAAGGAACCAGCACCCACGAAGCAAGCCGCCTCCCACATATGAATCAGAAGAAGAGGACAA
GTGTAAGCCTATGTCTTATGAGGAGAAGCGACAGCTAAGTCTAGATATCAACAACTTCTGGTGAGAA
CTAGGCCGTGTAGTACACATAATTAGTCTGAGGGAAACCATCACTTAAAACTCCAACCCTGATGAGATTG
AGATTGATTTTGGAGCCCTGAAGCCATCTACACTACGAGAGTTGGAGCGATATGTCACCTCCTGTTTGG
GAAGAAAAAGAAACCTCAAGCTGAAAAAGTTGATGTGATTGCTGGTTCTTCCAAGATGAAGGGCTTCTCA
TCCTCTGAGTCGGAGAGCACAGCGAATCTAGCTCCTCTGACAGTGAAGACTCTGAAACAGAGATGGCTC
CCAAGTCAAAAAAGAAGGGGCACACTGGGAGGGACCAGAAAAAGCATCATCACCATCACCACCACAGAT
GCAGCCAGCCCCAGCTCCTGTGCCCCAGCAGCCGCCACCTCCACAGCAGCCTCCTCCACCCCCACCT
CCTCAGCAGCAGCAGCAGCAGCAGCAGCAGCAGCAGCCCCACCCCCACCACCTCCGCCTCCATGCCACAGC
AGACTGCCCCAGCGATGAAGTCTCGCCCCACCCTTCACTGCCCAGGTACCCGTCTGGAACCACA
GCTACCAGGCAGTGTCTTTGACCCTATTGGCCACTTCACCAGCCCATCTTGACCTGCCGAGCCAGAG
CTGCCTCCTCACCTGCCCGCCACCCGAGCAGCACTCCACCCCATCTCAACCAGCATGCTGTGGTCT
CTCCTCCAGCTTGCACAATGCGCTGCCCAACAACCATCTCGGCCAGCAACCGAGCTGCTGCTGCTGCC
CCCAAAGCTGCCCGACCCAGCTGTGTCCCCTGCCTTGGCCAGCCCCCCTGCTCCACAGCCACCT
ATGGCTCAGCCCCCAAGTGTGCTGGAGGATGAAGAGCCGCCTGCCCCACCCCTCACCTCCATGCAGA
TGCAAGTGTACCTACAGCAGCTGCAGAAGTGCAGCCTCCACACCCTACTCCCTTCCGTGAAGGTGCA
GTCCCAACCCCCACCACCTTTGCCGCCTCCACCCACCCTTCTGTGCAGCAACAGCAGCTCCAGCAGCAG
CCACCACCACCCACCCTCCTCAGCCACAGCCACCACCCAGCAACAACACCAGCCCCACCACGACCAG
TTCACTTGCCATCCATGCCCTTCTGTCTCACATTCAGCAGCCCCACCACCCACAGGACAGCAACCCAC
CCACCCACCCAGGACAGCAGCCACCCACCCACAGCCTGCCAAGCCTCAGCAAGTCATCCAGCATCAC
CCTTACCCCGGCACCAAGTCAGACCCTACTCAGCTGGTCACTTTCGTGAAGCCCTTCTCCGCTTA
TGATACATTCCTCAAATGCCACAGTTCCAGAGCCTGACCCATCAGTCTCCACCCAGCAAAACGTCCA
GCCAAGAAGCAGGTAAGGGCAGGGCTGAGCCACAGCCCCAGGCCAGTCAATGGGCCGAGGCCAGGGA
TGCCACCTGCCTCACCGCTGCCGTACCTATGCTGTCCAGGAGCTGCGCCACCCTGAGTCTGCTCCAGC
CCCAGCCCCTGGTGTAGTGAAGGAGGAGAAGATTCACTACCAATCATCCGCAGTGAAGCCTTTAGCAC
CTCACTTCGCCAGAGCCGCCAAGCACCAGAGAACATGAAGGCCAGTCCACCTGCCTCAGCGGCCCT
GAGATGAAGCCTGTAGATGTAGGAGGCCGTGTATCCGGCCTCCAGAGCAGAGTGCACCCCCACCAGGG
CCCCTGACAAGGACAAACAGAAACAGGAGCCAAAAACACCAGTGGCGCCAAAAAGGACCTGAAAATTA
GAACATGGGCTCCTGGGCCAGCCTGGTACAGAAGCATCCGACCACCCATCCTCCACAGCCAAGTCTCA
AGCGACAGCTTTGAGCATTTCCGCCGCTGCTCGGGAGAAGGAGGAGCGGGAAAAGCCCTGAAGGCTC
AGGCTGAGCACGCAGAGAAGGAGAAGGAGCGGCTGAGGCAGGAGCGCATGAGGAGCCGAGAGGATGAGGA
TGCCTGGAACAGGCACGTGAGCCCATGAGGAGCAGCAGCGGCCAGGAGCAGCAGCAGCAGCAGCAG
AGACAGGAGCAGCAGCAGCAGCAACAGCAGGAGCTGCTGTGGCCGCTGCCTCCGCCCCCCAGGCC
AGAGCTCCCAGCCCCAGTCTATGCTGGACCAGCAGAGGGAGTTGGCCGAAAGCGAGAACAGGAGCGGAG
GCGCAGGGAGGAATGGCAGCTACAATTGACATGAATTTCCAGAGTGATCTTTTGTCAATATTTGAAGAA
AATCTTTTT

ACGGTACGCGGCCGCTCGAGCAGAACTCATCTCAGAAGAGGATCTGGCAGCAATGATATCCTGGATT
ACAAGGATGACGACGATAAGTTTAA

Protein Sequence:

>RR208565 representing NM_001100903
 Red=Cloning site Green=Tags(s)

```
MSTESGPGTRLRNLPVMGDGLETSMSTTQAQAQPQSANAASTNPPPPETSNPNKPKRQTNLQYLLRVV
LKTLWKHQFAWPFQQPVDAVKLNLPDYKIKTPMDMGTIKKRLENNYYWNAQECIQDFNTMFTNCYIYN
KPGDDIVLMAEAEKLFQKINELPTEETEIMIVQAKGRGRKGTAKPGVSTVPNTTQASTSPQTQM
PQQNPPPPVQATTHPFAVTPDLIAQPPVMTMVPPLQTPSPVPPQPPPPAPVPQVQSHPIIATTP
QPVKTKKGVKRKADTTTPTTIDPIHEPPSLAPEPKTAKLGPRESSRPVKPKKDVPSQQHPGPEKSSK
ISEQLKCCSGILKEMFAKHAAYAWPFYKPV DVEALGLHDYCDIIKHPMDMSTIKSKLESREYRDAQEFG
ADVRLMFSNCKYKYNPPDHEVVAMARKLQDVFEMRFKMPDEPEEPVTVSSPAVPPPTKVVAPSSSDSS
SDSSSDSSDSDSDSEERAQRLAELQEQLKAVHEQLAALSQPQQNKPKKKEKDKKEKKEKKEKKEEMEE
NKKSKAKELPPKTKKNNSSNSNVSKKEPAPTKTKPPPTYESEEDKCKPMSYEEKRQLSLDINKLPGEK
LGRVVHI IQSREPSLKNSNPDEIEIDFETLKPSTLRELERYVTSCLRKRKPQAEKVDVIAGSSKMGFS
SSESESTESSSSDSESETEMAPKSKKKGHTGRDQKHHHHHPQMPPAPAPVPQPPPPPPPPPPPP
PQQQQQQQQQPPPPPPPPSMPQQTAPAMKSSPPPFITAQVPVLEPQLPGSVFDPIGHFTQPIILHLQPE
LPPHLPQPEHSTPPHLNQHAVVSPALHNALPQQPSRPSNRAAALPKPARPPAVSPALAQPLLQPP
MAQPPVLLLEDEEPPAPLTSMQMLYLQQLQKVQPPTLLPSVKVQSQPPPLPPPSPVQVQQLQVQ
PPPPPPPPQPPPPQVQPPPRVHLPSMPFSAHIQQPPPTGQQPTHPPPQQPPPPQAKPQQVIQHH
PSPRHHSKSDPYSAGHLREAPSPLMIHSPQMPQFQSLTHQSPPQNVQPKQVKGRAEPQPPGVMGRGQ
CPPASPAAVPMLSQELRPPSVVQPPQLVVVKEEKIHSPIIRSEPFSTSLRPEPKHPENMKAPVHLPQRP
EMKPV DVG RPIRPEQSAPPPGAPDKDKQKQEPKTPVAPKDLKIKNMGSWASLVQKHPTTSPSTAKSS
SDSFEHFRRAAREKEEREKALKAQAHAKEKERLRQERMRSEDEDALEQARRAHEEARRRQEQQQQQ
RQEQQQQQQQAAVAASAPQAQSSQPQSM LDQQRELARKREQERRRREAMAATIDMNFQSDLLSIFEE
NLF
```

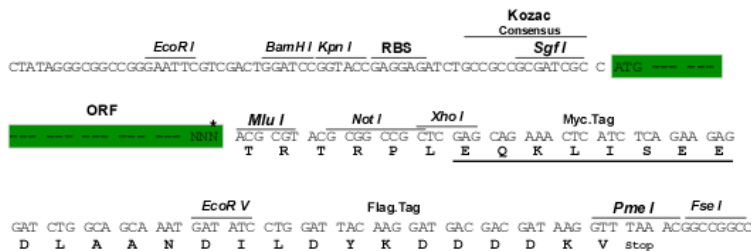
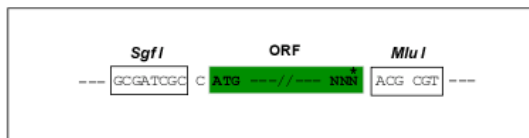
TRTRPLEQKLISEEDLAANDILDYKDDDDKV

Restriction Sites:

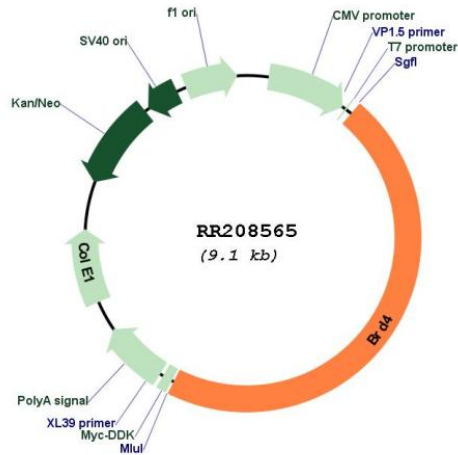
SgfI-MluI

Cloning Scheme:

Cloning sites used for ORF Shuttling:



* The last codon before the Stop codon of the ORF

Plasmid Map:


ACCN: NM_001100903

ORF Size: 4209 bp

OTI Disclaimer: The molecular sequence of this clone aligns with the gene accession number as a point of reference only. However, individual transcript sequences of the same gene can differ through naturally occurring variations (e.g. polymorphisms), each with its own valid existence. This clone is substantially in agreement with the reference, but a complete review of all prevailing variants is recommended prior to use. [More info](#)

OTI Annotation: This clone was engineered to express the complete ORF with an expression tag. Expression varies depending on the nature of the gene.

Components: The ORF clone is ion-exchange column purified and shipped in a 2D barcoded Matrix tube containing 10ug of transfection-ready, dried plasmid DNA (reconstitute with 100 ul of water).

Reconstitution Method:

1. Centrifuge at 5,000xg for 5min.
2. Carefully open the tube and add 100ul of sterile water to dissolve the DNA.
3. Close the tube and incubate for 10 minutes at room temperature.
4. Briefly vortex the tube and then do a quick spin (less than 5000xg) to concentrate the liquid at the bottom.
5. Store the suspended plasmid at -20°C. The DNA is stable for at least one year from date of shipping when stored at -20°C.

RefSeq: [NM_001100903.1](#), [NP_001094373.1](#)

RefSeq Size: 7037 bp

RefSeq ORF: 4212 bp

Locus ID: 362844

Cytogenetics: 7q11

MW: 156.3 kDa