

Product datasheet for **RR208559**

Dtx3l (NM_001109053) Rat Tagged ORF Clone

Product data:

Product Type:	Expression Plasmids
Product Name:	Dtx3l (NM_001109053) Rat Tagged ORF Clone
Tag:	Myc-DDK
Symbol:	Dtx3l
Synonyms:	RGD1565144
Mammalian Cell Selection:	Neomycin
Vector:	pCMV6-Entry (PS100001)
E. coli Selection:	Kanamycin (25 ug/mL)



[View online »](#)

ORF Nucleotide
Sequence:

>RR208559 representing NM_001109053
 Red=Cloning site Blue=ORF Green=Tags(s)

TTTTGTAATACGACTCACTATAGGGCGGCCGGGAATTCGTGACTGGATCCGGTACCGAGGAGATCTGCC
 GCC**CGCATCGCC**

ATGGCCTCCAGTCCGGACCCGCCGTCCCCTACTCGTAAGGCTGCCGGAGTCCATCCCCGAGCGCACA
 TGAAGCTGGAGATATATTTCCAGAGCCGGCCTCCGGAGCGGGAGTGCCTGTTCATCCCGTGGGGCC
 CGGCGCCCCGGACACCTTCGAGGTGAAGTTCCTTGAAAAAGCAGATAAGGAGAATGTGTTGAAAAGGGGA
 AAACACAAGCTGTTGGTTGATGACAAATCTGTGCCTATTGTCCTGGAACTATTAATAAGCCAGAAGAGG
 ACCTGAGACCCAGACCTCCATCACTGACACAGCCAGCTGAGACACCAAGCTCCCGAACTCCGTCCTTGAC
 AGAGTCCCTGGATGAAGCACTGGGTGATAAGATACATCCAGTGTGGGCCGTTTTTAACCTGTTGAC
 TCAGTTGTCCAAAAGGTCTTTCGCTGTGACCGCTGAGCTGAACTGTGAACTGCTCTCAAAGAGCAGA
 GAGCACAGATTACTGCTGTCTGCCCTCATATCAAAGCATGGAGGGCAGTGACGGAATTAAGAAGGTGTG
 TGGCAACTTCAAAGATATTGAAAAGATACATCACTTCTGAGTTCGCAGCTTTTGAAAAGTGAGCCGACA
 CGAAAGTACGTCCACAGAAATACACACCTCCGATGTGGAGAGGGAGCCCCCAGTCAGAGAAGTTTTG
 AAGTTTCTGTGCTTTTCTTGAATATTTCAAACATATTTATCCGGGTAGAAATAGAATCCATAGAGAAAA
 ATTTGGTGTAACATCAAATCCAAGATAGTTCTCCGATATGGTCTCTATAGGCTTACCTCCAGACAA
 TCAGGCAACTTAGAAGAAGCTTGTCACTTTTGTGACAGACTTTCAGAAATGCACGCAGTCTCTGAAGC
 AAGATTGTATCTTTAGAGGACCAACAGAGAGCAAAGAAGGTGAGGCAGGAGCTGAGTCGCTGCTTCCC
 AAAGCTTTGATAAAGGAACAGGGAAGGATGCTAACTCTCCTGGGCTCTGCTGCTGACATTGCAGCTGCC
 GCAGAAAAAGTCTCCAAACTCTTGTCCAGCACCTGTGAAAATAGTAGCCACACCTGTGAAAATAGCCA
 CACCTGTGAAAATAGCCACGTCTGGGTACATGACAGGGATCGAGGTGATTTCGACCCGCTTTAAGCTTCT
 AGAACCTGAGCTGCTCCAGGAAATCGCAGAGATCGAGCAGAAGTTTAACTTGTGGCAAAGTCCAGGAA
 AAAGGCCAGAAAACCTGCATTCTTTTGTCCCAAGGATAAAGAGTTAGACCTGTCTGTGCAATCTTACA
 CAAGTTTTACTGAGGCCTTCCAGCATGCCACGTGCCAGTTGAGGACAGAAGTTCTGTGCTGAAACAGCT
 GGGCAAGGAGAAAGCTCAATTGCACAAGACCAAGTTTGTGACGACTTTAAAATAAAACACCCAAACGTG
 CACTTCGTGATATCTCAAGAGTCACTGACCTTACTGTTTGCCTTACCTTGGGCAGGCAATGCAGT
 ATGTTGCCAAAAGGATAGGAATGCCACGTTGTTGCTGCTGGAGAGAAATGGCTATGGATCATGAAAC
 GCCCATGGAGTCCACAGGAATGACTCAGATGTGGCGTACTTTCTTTCGGAAGCTCTGCTAGCAGCCCT
 ACGGCCTCGAAGGGGAACAAGGACGAGGACAACGCGTCATCTGCATGGACACCATCAGGAACAAGCAGG
 TGCTCCCTAAGTCAAGCATGAATTCTGCTCCTTGTATCAGCAAAGCCATGTCATTCAAGCCTGTCTG
 TCCTGTGTGCTGACTCCCTACGGTGTCCAGAAAAGGGAACAGCCAGAGGGAACCATGGCTCACACCATT
 CAAAAAGACTCACTTCCGGGTTATGAAGGCTGCGGGACTATTGTGATTACGTACAGTTTTGGAGATGGCA
 TACAAACAAGGAGCACCCAAACCCAGGAAAAGCTTACTCTGAACTTATCGGGTTGCATATTTGCCTGA
 TAATGCGGAGGGGAGAAAGGTTTTGCATCTGCTCCGAAAAGCCTTTGATCAGAAGCTGATTTTACAGTA
 GGAGAACTCGGGTATTAGGAATCTCGAATGTCATTACATGGAATGATATTCATCACAAAACAGCCAAGT
 TTGGAGGACCATCAAATTTCCGCTACCTGATCCTGATTACCTGAAACGTGTCAAGGAGGAGCTGAAATC
 AAAAGGGATCGAG

ACGCGTACGCGGCCGCTCGAGCAGAAACTCATCTCAGAAGAGGATCTGGCAGCAAATGATATCCTGGATT
 ACAAGGATGACGACGATAAGGTTTAA

Protein Sequence: >RR208559 representing NM_001109053
 Red=Cloning site Green=Tags(s)

MASSPDPPSPLL VRLPESIPRAHMKLEIYFQSRASGGGECVHPVGGAPDTFEVKFLEKADKENVLKRG
 KHKLLVDDKSVPIVLETIKKPEEDLRPRPSSLTQPAETPSRTPSLTESLDEALGDKIHPSDGPFVNSVD
 SVVQKFLAVTAELNCELLSKEQRAQITAVCPHIKSMEGSDGIKKVCGNFKDIEKIHFLSSQLLESEPT
 RKYVPQKYTPSDVEREPPSQRSFEVSVLFLEYFKHIYPGRIESIEKKFGVNIKIQDSSPYMVSIGFTSRQ
 SGNLEEACQSFVRDFQKCTQSLKQDCISLEDQQRRAKVRQELSRFCPKLLIKEQGRMLTLLGSAADIAAA
 AEKVSQTLVPAPVKIVATPVKVIATPVKVIATSGYMTGIEVDSTRFKLLEPELLQEIAEIEQKFNTCGKVQE
 KGQKTCILFVPKDKELDLSVQSYTSFTEAFQHATCQLRTEVLSLKQLGKEKAQLHKTKFADDFKIKHPNV
 HFVISQESVTLTGLPNHLGQAMQYVAKRIGMPTLLSSGEKAMDHETPMEVHRNDSVALLSFGSSASSP
 TASKGNKDEDNCVICMDTIRNKQVLPKCKHEFCSSCISKAMSFKPVCPVCLTPYGVQKGNQPEGMAHTI
 QKDSLPGYEGCGTIVIQYSFGDGIQTKEHPNPGKAYSGTYRVAYLPDNAEGRKVLHLLRKAQDKLIFTV
 GESRVLGISNVITWNDIHHKTAKFGGPNFSGYDPDYLRVKEELKSKGIE

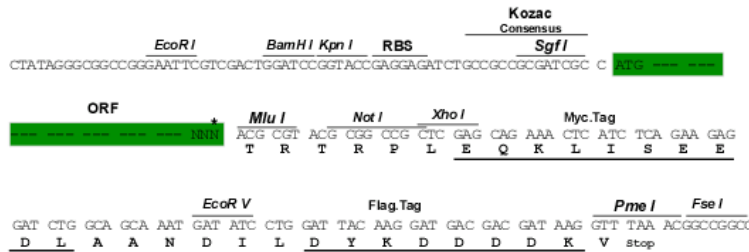
TRTRPLEQKLISEEDLAANDILDYKDDDDKV

Restriction Sites:

SgfI-MluI

Cloning Scheme:

Cloning sites used for ORF Shuttling:



* The last codon before the Stop codon of the ORF

ACCN: NM_001109053

ORF Size: 2253 bp

OTI Disclaimer: The molecular sequence of this clone aligns with the gene accession number as a point of reference only. However, individual transcript sequences of the same gene can differ through naturally occurring variations (e.g. polymorphisms), each with its own valid existence. This clone is substantially in agreement with the reference, but a complete review of all prevailing variants is recommended prior to use. [More info](#)

OTI Annotation: This clone was engineered to express the complete ORF with an expression tag. Expression varies depending on the nature of the gene.

Components: The ORF clone is ion-exchange column purified and shipped in a 2D barcoded Matrix tube containing 10ug of transfection-ready, dried plasmid DNA (reconstitute with 100 ul of water).

- Reconstitution Method:**
1. Centrifuge at 5,000xg for 5min.
 2. Carefully open the tube and add 100ul of sterile water to dissolve the DNA.
 3. Close the tube and incubate for 10 minutes at room temperature.
 4. Briefly vortex the tube and then do a quick spin (less than 5000xg) to concentrate the liquid at the bottom.
 5. Store the suspended plasmid at -20°C. The DNA is stable for at least one year from date of shipping when stored at -20°C.

RefSeq: [NM_001109053.1](#), [NP_001102523.1](#)

RefSeq Size: 4841 bp

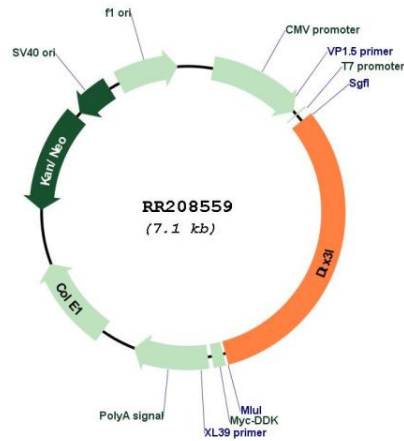
RefSeq ORF: 2256 bp

Locus ID: 498089

Cytogenetics: 11q22

MW: 83.3 kDa

Product images:



Circular map for RR208559