

Product datasheet for **RR208542**

Sh2b3 (NM_031621) Rat Tagged ORF Clone

Product data:

Product Type: Expression Plasmids
Product Name: Sh2b3 (NM_031621) Rat Tagged ORF Clone
Tag: Myc-DDK
Symbol: Sh2b3
Synonyms: Lnk
Vector: pCMV6-Entry (PS100001)
E. coli Selection: Kanamycin (25 ug/mL)
Cell Selection: Neomycin
ORF Nucleotide Sequence: >RR208542 representing NM_031621
Red=Cloning site Blue=ORF Green=Tags(s)

TTTTGTAATACGACTCACTATAGGGCGCCGGAATTCGTCGACTGGATCCGGTACCGAGGAGATCTGCC
GCC**CGATCGCC**

ATGGCTGGCAGAACTCAGGGCAAGCACAGGCCTAGGGTGAGGACCTGCCATCCCTGGTTCCTTTGATA
ACCCCTGTGGCCCTTCTCACCAGCCTTCCCTACAGTTGGAGCACCTGGACACAGATTACCTC
TTTCCTTAGTGGCAGAGCCTGGCCAGCTATATCCCAAGGGGAAGCACGGACTCCCTGGACCAAGGTAT
GTGCCAGATCCTTGGTCTCTGGGTGTCTTGGACATGTGGCCCTCTGCGGGTACCACACCACATCTTC
TGCCAGGTGCTTACCTGGGGTGTGTTGGACCCAGCCTGCCAGAAAACAGATCACTTCCTGTCTGCTGCTA
CCCCTGGTTCACGGCCCATCTCCAGGGTGAGGGCTGCACAGCTGGTTCAGCTGCAGGGCCCTGATGCC
CACGGTGTGTTCTTGGTGGCAGAGTGTGAGTCCCGGAGAGGGGAATGTACTCACATTCACTTACAGG
GGAGAGCCAAGCACCTCCGCTGGTGTCTCACAGAGCGTGGACAGTGGCGGGTGAACACCTGCACTTCCC
CTCGGTGGTGGATATGCTCCGCCACTCCAGCGCTCCCCATCCCACTTGAATGTGGAGCAGCCTGTGAT
GTCCGACTCTCTGGCTATGTGGTAGTCGTCTCTCAGGCACCAGGTAGGAAGCCAAAGTTGTGTCAAGGG
TGGTGTACAGCAAGTACAGCACGTACAAAACCTCCTTCTGGTTACGCCTTCTCATGGAGTCATCCA
TGTTATCTCTCCAGTTCTCCAACACCGTTCTTCCCCTTTCCCTTCCCTCACTGGGACTCAGAGCTG
GGCCATCCCCACCTCAGCTCTGCTGGCTGTCCCCCTGGCCATGGTGCAGAGGCTCTCCGTGGCCAAGTGA
CACCTCTGAGCAGATCTCCACCTGGTGCCTTCTCCTGAGGAACTGGCCAACAGTCTGCGGCAGCTGGA
GCTTGAGTCTGTGAGCAGTGCCCGGACTCAGACTATGAAATGGACTCCTCCTCACGGAGCCACCTTCGG
GCCATTGACAACCACTACACCCCTCTCTCACAGCTGTGCAGAGAGGCAAACCTTG

ACGCGTACGCGGCCGCTCGAGCAGAACTCATCTCAGAAGAGGATCTGGCAGCAAATGATATCCTGGATT
ACAAGGATGACGACGATAAGGTTTAA



[View online »](#)

Protein Sequence: >RR208542 representing NM_031621
Red=Cloning site Green=Tags(s)

MAGRTQGKHRPRVRTCP SLV PFDN PCWPPSHQPLPLQVGAPGHRVTSFLSGRAWPSYIPKGGKHLPGPRY
 VDPWSLGVLGHVAPLRVTTTIFLPGASPGVMLDPACQKTDHFLSCYPWFHGPISRVRAAQLVQLQGPDA
 HGVFLVRQSESRRGEYVLT FN LQGRAKHLRLVL TERGQCRVQHLHFP SVVDMLRHFQRSPIPLECGAACD
 VRLSGYVVVVSQAPGRKPKVVS RGGVTA STARTKLP SWLRLLHGVIHVISPGSSNTVLPFSLPHWDESEL
 GHPHLSSAGCPPGHGAEALRGQVTPPEQIFHLVPSPEELANSLRQLELESVSSARDSDYEMDSSSRSHLR
 AIDNQYTPLSQLCREANL

TRTRPLEQKLISEEDLAANDILDYKDDDDKV

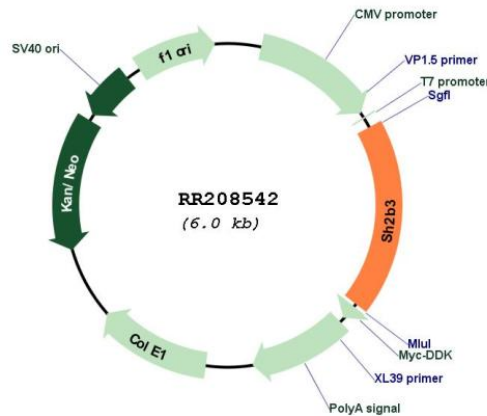
Restriction Sites:

SgfI-MluI

Cloning Scheme:



Plasmid Map:



ACCN:

NM_031621

ORF Size:	1104 bp
OTI Disclaimer:	The molecular sequence of this clone aligns with the gene accession number as a point of reference only. However, individual transcript sequences of the same gene can differ through naturally occurring variations (e.g. polymorphisms), each with its own valid existence. This clone is substantially in agreement with the reference, but a complete review of all prevailing variants is recommended prior to use. More info
OTI Annotation:	This clone was engineered to express the complete ORF with an expression tag. Expression varies depending on the nature of the gene.
Components:	The ORF clone is ion-exchange column purified and shipped in a 2D barcoded Matrix tube containing 10ug of transfection-ready, dried plasmid DNA (reconstitute with 100 ul of water).
Reconstitution Method:	<ol style="list-style-type: none">1. Centrifuge at 5,000xg for 5min.2. Carefully open the tube and add 100ul of sterile water to dissolve the DNA.3. Close the tube and incubate for 10 minutes at room temperature.4. Briefly vortex the tube and then do a quick spin (less than 5000xg) to concentrate the liquid at the bottom.5. Store the suspended plasmid at -20°C. The DNA is stable for at least one year from date of shipping when stored at -20°C.
RefSeq:	NM_031621.1 , NP_113809.1
RefSeq Size:	3680 bp
RefSeq ORF:	1107 bp
Locus ID:	58838
UniProt ID:	P50745
Cytogenetics:	12q16
MW:	40.4 kDa
Gene Summary:	transmits activated T-cell receptor signal to phosphatidylinositol 3-kinase, phospholipase C gamma 1 and Ras signaling pathways [RGD, Feb 2006]