

Product datasheet for **RR208539**

Slc32a1 (NM_031782) Rat Tagged ORF Clone

Product data:

Product Type:	Expression Plasmids
Product Name:	Slc32a1 (NM_031782) Rat Tagged ORF Clone
Tag:	Myc-DDK
Symbol:	Slc32a1
Synonyms:	Vgat; Viaat
Vector:	pCMV6-Entry (PS100001)
E. coli Selection:	Kanamycin (25 ug/mL)
Cell Selection:	Neomycin



[View online »](#)

ORF Nucleotide Sequence:

>RR208539 representing NM_031782
 Red=Cloning site Blue=ORF Green=Tags(s)

TTTTGTAATACGACTCACTATAGGGCGGCCGGGAATTCGTCGACTGGATCCGGTACCGAGGAGATCTGCC
 GCC**CGATCGCC**

ATGGCCACCCTGCTCCGACGAAGCTGACCAACGTGGCCACCTCTGTGTCCAACAAGTCCCAGGCCAAGG
 TGAGCGCATGTTTCGCCAGGATGGGGTTTCAGGCGGCCACGGATGAGGAGCGGTGGGCTTCGCGCACTG
 CGACGATCTCGACTTTGAGCACCGCCAGGGCCTGCAGATGGACATCCTGAAATCGGAAGGCGAGCCCTGC
 GGGACAGGGCGCAGAACCTCCCGTCGAGGGAGACATTCATTATCAGCGCGGGCGCTCCCCTGCCAC
 CCTCGGGCTCCAAGGACCAGGCCGTGGGAGCTGGTGGGGATTTCGGGGGTACGACAAACCAAGATCAC
 GGCGTGGGAAGCGGGCTGGAACGTGACAAACGCCATTCAGGGCATGTTCTGTGCTGGTCTACCTACGCC
 ATCCTCCACGGCGCTACCTGGGGTTGTTCTCATCATCTTCGCCCGGTGGTGTGCTGTACACCGGCA
 AGATCCTCATCGCGTGCCTGTACGAGGAGAACGAAGATGGTGGTGGTGCCTGAGGGACTCGTATGT
 GGCCATAGCTAACCGTGTGCTGCTCCTCGATTCCCCAGCTGGCGGGCCGCTGGTCAATGTGGCCAG
 ATCATCGAGCTGGTGTGACGTGTATCTTGTACGTAGTGGTGGCGGCAACCTCATGTACAACAGTTTC
 CGGGGCTGCCCGTGTGCGAGAAGTCTGGTCCATCATAGCCACGGCGGTGCTGCTGCCCTTCCCTTCT
 GAAGAATCTCAAGGCCGTGTCCAAGTTCAGTCTGCTGTGCACGCTGGCCACTTCGTATCAACATCCTG
 GTCATCGCCTACTGTCTCTCGCGCGCGCTGACTGGCCCTGGGAGAAGGTGAAGTTCTACATCGACGTCA
 AGAAGTTTCTATCTCCATCGGCATCATCGTGTTCAGCTACACGTGCGAGATCTTCTGCCCTCGCTCGA
 AGGCAACATGCAGCAGCCAGCGAATCCACTGCATGATGAACGGACACATCGCCGCTCGCTGCTC
 AAGGGTCTCTTCGCGCTCGTGCCTACCTCACCTGGCCGACGAGACCAAGGAAGTATCACGGATAACC
 TGCCCGTTCCATCCGCGCCGTGGTCAACATCTTCTGGTGGCCAGGGCGCTGCTCTACCCGTTGCC
 CTTCTTCGCGCGCTCGAAGTGTGGAGAAGTCTCTTCCAGGAAGGCAGTCTGCCTTCTTCCCGCC
 TGCTACGGTGGGACGGTGCCTTAAGTCTGGGGCTGACGCTGCGCTGCGCGTGGTGGTCTTACGCG
 TGCTCATGGCCATCTACGTGCCACACTTCGCGCTGCTCATGGCCCTCACGGGCAGCCTCACGGGAGCCGG
 CCTCTGCTTCTGCTGCCAGCCTTCCACTTGCCTTCTCTGGCGAAGCTGCTGTGGCACCAGGTC
 TTCTTCGATGTGGCCATCTTCGTATCGCGGCATCTGCAGCGTGTCCGGCTTCGTGCATTCACTCGAGG
 GCCTCATCGAGGCCTACCGAACCAACGCAGAGGAC

AG**CGGACCG**ACGCGTACGCGGCCGCTCGAGCAGAACTCATCTCAGAAGAGGATCTGGCAGCAAATGATATCC
 TGGATTACAAGGATGACGACGATAAGGTTTAA

Protein Sequence:

>RR208539 representing NM_031782
 Red=Cloning site Green=Tags(s)

MATLLRSKLTNVATSVSNKSQAKVSGMFARMGFQAATDEEAVGF AHCDDLDFEHRQGLQMDILKSEGEPC
 GDEGAEPPEVDIHYQRGGAPLPPSGSKDQAVGAGGEFGGHDKPKITAWAAGWNVTNAIQGMFVLGLPYA
 ILHGGYLGLFLIIFAAVVCCYTGKILIACLYEENEDGEVVRVRSYVAIANACCAPRFPPLGGRVNVVAQ
 IIELVMTCILYVVVSGNLMYNSFPGLPVSQKWSIIATAVLLPCAFKLNKAVSKFSLCTLAHFVINIL
 VIAYCLSRARDWAWEKVYIDVKKFPIISIGIIVFSYTSQIFLPSLEGNMQQPSEFHCMMNWITHIAACVL
 KGLFALVAYLTWADETKEVITDNLPGSIRAVVNIIFLVAKALLSYPLPFFAAVEVLEKSLFQEGSRAFFPA
 CYGGDGRKLSWGLTLRCALVVFLLMAIYVPHFALLMGLTGSLTGAGLCFLLPSLFHLRLLWRKLLWHQV
 FFDVAIFVIGGICSVSGFVHSLLEGLIEAYRTNAED

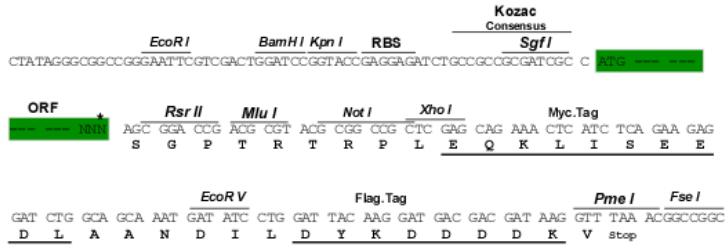
SGPTRTRPLE**QKLI**SEEDLAANDILDYKDDDDKV

Restriction Sites:

Sgfl-RsrII

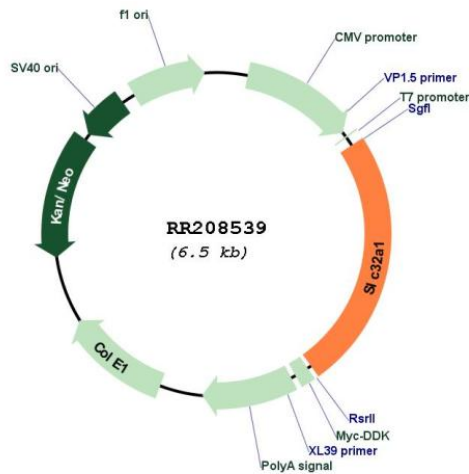
Cloning Scheme:

Cloning sites used for ORF Shuttling:



* The last codon before the Stop codon of the ORF

Plasmid Map:



ACCN:	NM_031782
ORF Size:	1575 bp
OTI Disclaimer:	<p>Due to the inherent nature of this plasmid, standard methods to replicate additional amounts of DNA in E. coli are highly likely to result in mutations and/or rearrangements. Therefore, OriGene does not guarantee the capability to replicate this plasmid DNA. Additional amounts of DNA can be purchased from OriGene with batch-specific, full-sequence verification at a reduced cost. Please contact our customer care team at custsupport@origene.com or by calling 301.340.3188 option 3 for pricing and delivery.</p> <p>The molecular sequence of this clone aligns with the gene accession number as a point of reference only. However, individual transcript sequences of the same gene can differ through naturally occurring variations (e.g. polymorphisms), each with its own valid existence. This clone is substantially in agreement with the reference, but a complete review of all prevailing variants is recommended prior to use. More info</p>
OTI Annotation:	This clone was engineered to express the complete ORF with an expression tag. Expression varies depending on the nature of the gene.
Components:	The ORF clone is ion-exchange column purified and shipped in a 2D barcoded Matrix tube containing 10ug of transfection-ready, dried plasmid DNA (reconstitute with 100 ul of water).
Reconstitution Method:	<ol style="list-style-type: none">1. Centrifuge at 5,000xg for 5min.2. Carefully open the tube and add 100ul of sterile water to dissolve the DNA.3. Close the tube and incubate for 10 minutes at room temperature.4. Briefly vortex the tube and then do a quick spin (less than 5000xg) to concentrate the liquid at the bottom.5. Store the suspended plasmid at -20°C. The DNA is stable for at least one year from date of shipping when stored at -20°C.
RefSeq:	NM_031782.1 , NP_113970.1
RefSeq Size:	2392 bp
RefSeq ORF:	1578 bp
Locus ID:	83612
UniProt ID:	O35458
Cytogenetics:	3q42
MW:	57.4 kDa
Gene Summary:	integral membrane protein involved in gamma-aminobutyric acid (GABA) and glycine uptake into synaptic vesicles [RGD, Feb 2006]