

## Product datasheet for **RR208500**

### Otx1 (NM\_013109) Rat Tagged ORF Clone

#### Product data:

Product Type:	Expression Plasmids
Product Name:	Otx1 (NM_013109) Rat Tagged ORF Clone
Tag:	Myc-DDK
Symbol:	Otx1
Synonyms:	OTX1X
Vector:	pCMV6-Entry (PS100001)
E. coli Selection:	Kanamycin (25 ug/mL)
Cell Selection:	Neomycin
ORF Nucleotide Sequence:	>RR208500 representing NM_013109 Red=Cloning site Blue=ORF Green=Tags(s)

TTTTGTAATACGACTCACTATAGGGCGCCGGAATTCGTCGACTGGATCCGGTACCGAGGAGATCTGCC  
GCC**CGGATCGCC**

ATGATGTCTTACCTCAAACAACCCCATACGGCATGAACGGGCTGGCCCTAGCTGGCCCTGCCATGGACC  
TCCTGCACCCCTTCGTGGGCTACCCTGCCACCCCGCGGAAGCAGCGACGGGAGCGCACCCACCTTCACGCG  
CTCACAGCTGGAGTGCTCGAGGCGCTGTTCCGAAAGACTCGCTACCCAGACATCTTCATGCGCGAGGAG  
GTGGCTCTCAAGATCAACCTGCCGAGTCCAGAGTCCAGGTTTGGTTCAAGAACCGCCGAGCCAAGTGCC  
GCCAGCAGCAGCAGAGCGGGAATGGAACGAAAAGCCGGCCGGTCAAGAAGAAGTCGCTCCGGTGCGCGA  
GAGCTCGGGTTCCGAGAGCAGCGCCAGTTCACGCCGCCCGCCGTATCTAGCTCTGCGTCTTCGTCTAGC  
TCAGCGTCCAGTGCCCTCCGCTAACCCGGCGGCTGCTGCGGCCGCGGGCCTGGGTGGGAACCCGGTGGCAG  
CCGCGTCTCTGAGCACGCCTACTGCTTCGTCCATCTGGAGCCCGCCCTCCATCTCTCCCGGCTCAGC  
GCCGGCATCCGTATCAGTGCCAGAGCCATTAGGCGCTCCGAGCAACGCCCTCATGCATGCAGCGCTCGGTA  
GCCGAGGTGCGGCCACTGCCGCGACCTCCTACCCTATGTCTATGGCCAGGGCAGAAGCTATGGCCAGG  
GCTACCCCGCGCCTTCTCTTACTTTGGCGGTGTAGACTGCAGCTCCTACCTTGGCCCATGCACTC  
TCATCACCAACCCGACCACTTAGCCCATGGCACCCCTCCTCCATGGCTGGCCACCACCACCACCCCG  
CACGCGCACCACTGAGCCAATCTTCAGGCCACCACCACCACCACCATCACCAACCACCACCACCAAG  
GTTATGGAGGCTCTGGGCTCGCCTTCAACTCTGCCGACTGCTTGGATTACAAGGAGCCCGCCGCCCGC  
TGCTTCTCTGCTGGAACTCAACTTCAACTCTCCCGACTGTCTGGACTATAAGGACCAAGCCTCATGG  
CGGTTCCAGTCTTG

**ACGCGT**ACGCGGCCGCTCGAGCAGAACTCATCTCAGAAGAGGATCTGGCAGCAATGATATCCTGGATT  
ACAAGGATGACGACGATAAGGTTTAA



[View online »](#)

**Protein Sequence:**

>RR208500 representing NM\_013109  
Red=Cloning site Green=Tags(s)

MMSYLKQPPYGMNGLGLAGPAMDLLHPSVGYPATPRKQRRERTTFTRSQLDVLEALFAKTRYPDIFMREE  
VALKINLPESRVQVWFKNRRACRQQQSGNGTKSRPVKKKSSPVRESSGESSGQFTPPAVSSSASSSS  
SASSASANPAAAAAAGLGNPVAASSLSTPTASSIWSPASISPGSAPASVSVPEPLGAPSNASCMQRSV  
AAGAATAATSYPM SYGQGRSYGQGY PAPSSSYFGGVDCCSYLAPMHSHHHPQLSPMAPSSMAGHHHHHP  
HAHHPLSQSSGHHHHHHHHHHHQYGGSLAFNSADCLDYKEPAAAAASSAWKLNFNNSPDCLDYKDQASW  
RFQVL

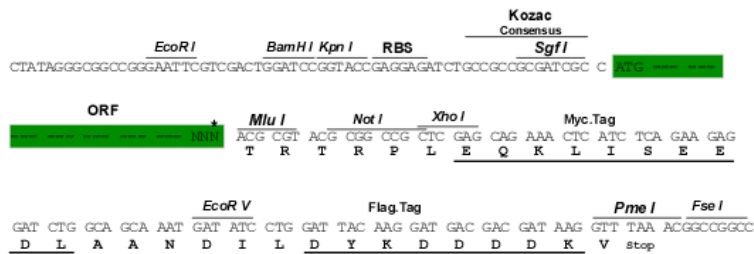
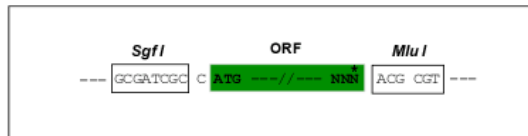
TRTRPLEQKLISEEDLAANDILDYKDDDDKV

**Restriction Sites:**

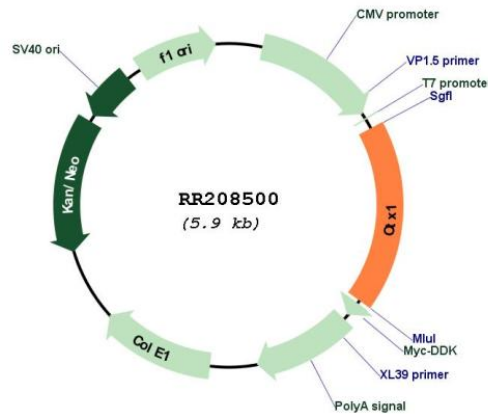
SgfI-MluI

**Cloning Scheme:**

Cloning sites used for ORF Shuttling:



\* The last codon before the Stop codon of the ORF

**Plasmid Map:**

ACCN:

NM\_013109

<b>ORF Size:</b>	1065 bp
<b>OTI Disclaimer:</b>	The molecular sequence of this clone aligns with the gene accession number as a point of reference only. However, individual transcript sequences of the same gene can differ through naturally occurring variations (e.g. polymorphisms), each with its own valid existence. This clone is substantially in agreement with the reference, but a complete review of all prevailing variants is recommended prior to use. <a href="#">More info</a>
<b>OTI Annotation:</b>	This clone was engineered to express the complete ORF with an expression tag. Expression varies depending on the nature of the gene.
<b>Components:</b>	The ORF clone is ion-exchange column purified and shipped in a 2D barcoded Matrix tube containing 10ug of transfection-ready, dried plasmid DNA (reconstitute with 100 ul of water).
<b>Reconstitution Method:</b>	<ol style="list-style-type: none"><li>1. Centrifuge at 5,000xg for 5min.</li><li>2. Carefully open the tube and add 100ul of sterile water to dissolve the DNA.</li><li>3. Close the tube and incubate for 10 minutes at room temperature.</li><li>4. Briefly vortex the tube and then do a quick spin (less than 5000xg) to concentrate the liquid at the bottom.</li><li>5. Store the suspended plasmid at -20°C. The DNA is stable for at least one year from date of shipping when stored at -20°C.</li></ol>
<b>RefSeq:</b>	<a href="#">NM_013109.2</a> , <a href="#">NP_037241.1</a>
<b>RefSeq Size:</b>	1229 bp
<b>RefSeq ORF:</b>	1068 bp
<b>Locus ID:</b>	25646
<b>UniProt ID:</b>	<a href="#">Q63410</a>
<b>Cytogenetics:</b>	14q22
<b>MW:</b>	37.6 kDa
<b>Gene Summary:</b>	homeodomain transcription factor protein; involved in cerebral cortex development [RGD, Feb 2006]