

Product datasheet for **RR208499**

C3 (NM_016994) Rat Tagged ORF Clone

Product data:

Product Type: Expression Plasmids
Product Name: C3 (NM_016994) Rat Tagged ORF Clone
Tag: Myc-DDK
Symbol: C3
Vector: pCMV6-Entry (PS100001)
E. coli Selection: Kanamycin (25 ug/mL)
Cell Selection: Neomycin
ORF Nucleotide Sequence: >RR208499 representing NM_016994
Red=Cloning site Blue=ORF Green=Tags(s)

TTTTGTAATACGACTCACTATAGGGCGGCCGGGAATTCGTCGACTGGATCCGGTACCGAGGAGATCTGCC
 GCCCGATCGCC

ATGGGACCCACGTCAGGGTCCCAGCTACTAGTGCTACTGCTGCTGTTGGCCAGCTCCCTGCTAGCTCTGG
 GGAGCCCCATGTACTCCATCATTACTCCCAATGTCTGCGGCTGGAGAGTGAAGAGACTTTCATACTAGA
 GGCCCATGCTCAGGGTGATGCCAGTCCCAGTCACTGTGCAAGACTTCTAAAGAAGCAAGTCTG
 ACCAGTGAGAAGACAGTGTGACAGGAGCCACTGGACATCTGAACAGGGTCTCCATCAAGATTCCAGCCA
 GTAAGGAATCAATGCAGATAAGGGGCACAAGTACGTGACAGTGGTGGCAAACCTTCGGGGCAACAGTGGT
 GGAGAAAGCGGTGCTAGTAAGCTTTCAGAGTGGTTACCTCTTCATCCAGACAGACAAGACCATCTACACC
 CCAGGCTCCACTGTTTTCTATCGGATCTTCACTGTGGACAACAACCTATTGCCTGTGGGCAAGACAGTGC
 TCATCGTCATTGAGACCCCGACGGCGTCCCATCAAGAGAGACATTCTATCTTCCACAACCAATATGG
 CATCTTGCCCTTGTCTTGAACATTCCAGAAGTGGTCAACATGGGGCAGTGAAGATCCGAGCCTTCTAT
 GAACATGCACAAAGCAGACCTTCTCTGCAGAGTTTGAGGTGAAGGAATACGTGCTGCCAGTTTTCGAAG
 TCCTGGTGGAGCCTACAGAGAAATTTTATTACATCGATGACCCAAAGGGCCTGGAAGTTTCCATCACAGC
 CAGATTCCTGTATGGGAAGAAGCTGGACGGGACAGCTTTCGTGATCTTTGGGGTCCAGGATGAGGATAAG
 AAGATTTCTCTGGCCAGTCCCTCACCCCGTGTGATCGAGGATGGTTCAGGGGAGGCAGTGTCTAGCC
 GAAAAGTGTGATGGACGGGTACGGCCCTCCAGCCAGAAAGCCCTAGTGGGGAAGTCCCTGTACGTCTC
 TGTCACTGTTATCCTGCACTCAGGTAGCGACATGGTAGAGGCAGAGCGCAGTGGGATCCCAATTGTCACT
 TCCCCGTACCAGATCCACTTCACCAAGACACCCAAATCTTCAAGCCAGCCATGCCTTTCGACCTCATGG
 TGTTTGTGACCAACCCTGATGGCTCTCCAGCCCGCAGAGTCCAGTAGTCACTCAGGGATCCGACGCGCA
 GGCTCTCACCCAGGATGATGGTGTGGCAAGCTGAGCGTCAACACACCCAAACAACCGCCAACCCCTGACT
 ATCACGGTCCGCACCAAGAAGGAGGGTATCCCGGACGCGCGCAGGCCACCAGGACGATGCAGCCCCAGC
 CCTACAGCACTATGCACAATCCAACAACCTACCTGCACTTGTCAAGTGTCTCGGGTGGAGCTCAAGCCTGG
 GGACAACCTCAATGTCAACTTCCACCTGCGCACGGACGCTGGCCAAGAGGCCAAGATCCGATACTACACC
 TATCTGGTTATGAACAAGGGGAAGTTACTGAAGGCAGGCCGTGAGTTTCGGGAGCCTGGCCAGGACCTGG
 TGGTCTTGTCACTGCCATCACTCCAGAATTTATACCTTCTTCCGCCTGGTGGCTTACTACACCCTGAT
 TGGAGCTAATGGCCAAGGGAGGTGGTGGCCGACTCAGTGTGGTGGATGTGAAGGACTCCTGTGTAGGC



[View online »](#)

ACGCTGGTGGTGAAAGGTGACCCAAGAGATAACCGACAGCCCGCGCTGGGCATCAAACGACACTAAGGA
 TCGAGGGGAACCAGGGGGCCGAGTGGGCTAGTGGCTGTGGACAAGGGGTGTTTGTGCTGAACAAGAA
 GAACAACTCACACAGAGCAAGATCTGGGATGTAGTAGAGAAGGCAGACATTGGCTGCACCCAGGCAGT
 GGGAGAAGTATGCGGGTGTCTTCATGGATGCTGGCCTGACCTTCAAGACAAACCAAGGCCTGCAGACTG
 ATCAGAGAGAAGATCCTGAGTGCCCAAGCCAGCTGCCGCCCGCGTGCCTCAGTGCAGTTGATGGAAG
 GAGGATGGACAAAGCTGGTCAGTACACCGACAAGGCTCGCGAAGTGTGTGAGGATGGCATGCGTGAT
 ATCCCTATGAAGTACAGCTGCCAGCGGGCTCGCTCATCACCCAGGGCGAGAGCTCCCTGAAGCCCT
 TCATGGACTGCTGCAACTATATCAACCAAGCTTCGTGAGCAGCACAGAAGAGACCATGTGCTGGCCTGGC
 CAGGAGTGATGTGGATGAAGACATAATCCAGAAGAAGATATTATCTCTAGAAGCCACTCCAGAGAGC
 TGGTTGTGGACATAGAAGAGTTGAAAGAACCAGAGAAAAATGGAATCTCTACGAAGGTCATGAACATCT
 TTCTCAAAGATCCATCACACCTGGGAGATTCTGGCAGTGAGCTTGTCCGACAAGAAAGGGATCTGTGT
 GGCAGACCCCTATGAGATCACAGTGCAGGACTTCTTATTGACCTGCGACTGCCCTACTCTGTGGT
 CGCAATGAACAGGTGGAGATCAGAGCTGTGCTTCAATTACCGTGAACAGGAGAAAATTAAGTAAAGG
 TGGAACTGTTGCATAACCCAGCCTTCTGCAGCATGGCCACTGCCAAGAAGCGGTACTACCAGACCATCGA
 AATCCCTCCCAAGTCTCTGTGGCTGTGCCTTATGTCATTGTCCCCTTGAAGATCGGCCTCCAGGAGGTG
 GAGGTCAAGGCCCGCTTCAACCACTTCATCAGTGATGGTGTCAAGAAGATACTGAAGGTCTGTCCAG
 AAGGAATGAGAGTCAACAAAAGTGTGGCTGTCCGTACACTGGATCCAGAACACCTCGGTCAAGGGGAGT
 GCAGAGGGAGGATGTACCTGCAGCAGACCTCAGTGACCAAGTGCAGACACAGATTCTGAGACCAGAATT
 CTCCTGCAAGGGACCCCGGTGGCTCAGATGGCCGAGGACGCTGTGGACGGGAGCGGCTGAAACACCTGA
 TCGTGACCCCTCTGGCTGTGGGAGCAGAACATGATTGGCATGACACCCACGGTCATTGCAGTACACTA
 TCTGGATCAGACCGAACAGTGGGAGAAATTCGGCTAGAGAAGAGGCAAGAAGCTCTGGAGCTCATCAAG
 AAAGGTTACACCCAGCAGCTGGCTTCAACAGCCAGCTCTGCCTATGCTGCCTTCAACAACCGGCCTC
 CCAGACCTGGCTGACAGCCTATGTGGTCAAGGCTTCTCTCTGGCTGCCAACCTCATCCCATCGACTC
 TCAGGTCTGTGTGGGGCTGTCAAATGGCTGATTCTGGAGAAACAGAAGCCAGATGGTGTCTTTCAGGAG
 GACGGACCAAGTATTACCAAGAATGATTGGTGGCTTCCGGAACACCAAGGAGGAGATGTGTGCTTCA
 CAGCCTTGTCTCATCGCACTGCAGGAAGCCAGAGATATCTGTGAGGGGAGGTC AACAGCCTTCCCGG
 GAGCATCAACAAGGCAGGGGAGTATCTTGAAGCCAGTTACCTGAACCTGCAGAGACCATAACAGTAGCC
 ATTGCTGGGTATGCCCTGGCCCTGATGAACAACTGGAGGAACCTTACCTACCAAGTTTCTGAACACAG
 CCAAAGATCGGAACCGCTGGGAGGACCTGGCCAGCAGCTCTACAATGTGGAGGCCACCTCTACGCCCT
 CCTGGCCCTGCTGCTGCTGAAAGACTTTGACTCTGTGCCTCCTGTGGTGCCTGGCTCAACGAGCAAAGA
 TACTACGAGGTGGCTATGGCTCCAGCAGGCTACCTTATGGTATTCCAAGCCTTGGCTCAATACCAA
 CAGATGTCCCTGACCACAAGGACTTGAACATGGATGTGTCCCTCCACCTCCCAGCCGACGCTCCCAAC
 TGTGTTTCGCTGCTATGGGAAAGTGGCAGTCTCCTGAGATCAGAAGAGACCAAGCAGAATGAGGGCTT
 TCTCTGACAGCCAAAGGAAAAGGCCAAGGCACACTGTCCGTGGTGACAGTGTATCACGCCAAAGTCAAAG
 GCAAAGCCACCTGCAAGAAGTTTACCTCAGGGTACCAATAAAACCAGCCCTGAGACAGCCAAGAAGCC
 CCAGGATGCCAAGAGTTCTATGATCCTTGACATCTGCACCAGGTAAGTGGGAGACGTGGATGCTACTATG
 TCCATCCTGGACATCTCCATGATGACTGGCTTTATTCCAGACACAACAGCCTGGAAGTCTGAGCTCTG
 GAGTAGACAGATACATTTCCAAGTATGAGATGGACAAAGCCTTCTCCAACAAGAACACCCATCATCTA
 CCTAGAAAAGATCTCACACTCCGAAGAAGACTGCCTGTCTTCAAAGTCCACAGTTCTTTAACGTGGGA
 CTTATCCAGCCGGGTCCGTCAAGGTCTACTCCTACTACAATCTAGAGGAGTCATGCACCCGGTTCTATC
 ATCCGGAGAAGGACGATGGAATGCTGAGCAAGCTGTGCCACAATGAAATGTGCCGCTGTGCAGAGGAGAA
 CTGCTTATGCATCAGTCACAGGATCAGGTGAGCCTGAATGAACGACTAGACAAGGCTTGTGAGCCTGGA
 GTGGACTACGTGTACAAGACCAAGCTAACGACGATAGAGCTGTCGGATGATTTTGTGAGTACATCATGA
 CCATCGAGCAGGTATCAAGTCAAGTCAAGTCAAGTCAAGTCAAGTCAAGTCAAGTCAAGTCAAGTCAAGT
 CGTCAAGTGCAGAAACGCCCTAAAGTGCAGAAAGGGAAGCAGTACCTCATGTGGGGCTCTCCTCCGAC
 CTCTGGGAGAAAAGCCCAATACCAGCTACATCATTGGGAAGGACACGTGGGTGGAGCACTGGCCCGAGG
 CAGAGGAATGTCAGGATCAGAAGAACCAGAACAGTGCAGAACCTCGGGCATTACAGAAACAATGGT
 GGTTTTCGGCTGCCCAAC

ACGCGTACGCGGCGGCTCGAGCAGAAACTCATCTCAGAAGAGGATCTGGCAGCAAATGATATCCTGGATT
 ACAAGGATGACGACGATAAGGTTTAA

Protein Sequence: >RR208499 representing NM_016994
 Red=Cloning site Green=Tags(s)

```

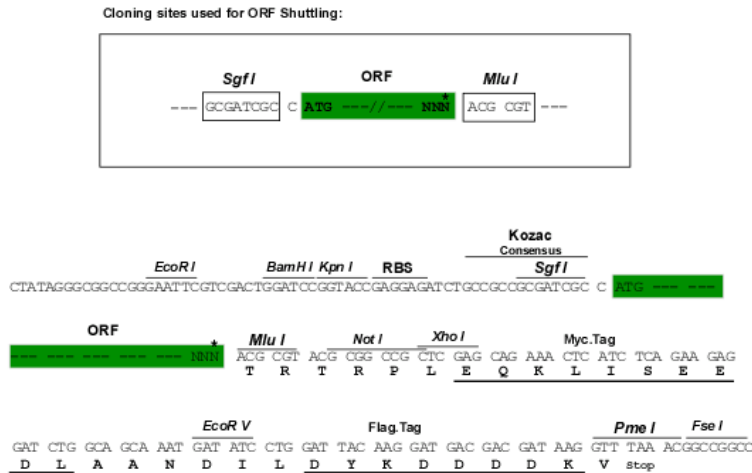
MGPTSGSQLLVLLLLASSLLALGSPMYSIITPNVLRLESEETFILEAHDAQGDVPVTVVQDFLKKQVL
TSEKTVLTGATGHLNRVSIKIPASKEFNADKGHKYVTVVANFGATVVEKAVLVSFQSGYLFIQTDKIYIT
PGSTVFYRIFTVDNLLPVGKTVVIVIEIPDGPVTKRDILSSHNQYGILPLSWNIPELVNMGQWKIRAFY
EHAPKQTFSAFEVKEYVLPSEFVLEPTEKFYYIDDPKGLEVSI TARFLYGNVDGTAFAVIFGVQDEDK
KISLAQSLTRVLI EDGSGEAVLSRKVLMGVRPSSPEALVGKSLYVSVTVILHSGSDMVEAERSGPIVIT
SPYQIHFTKTPKFFKPAMPFDLMVFVTNPDGSPARRVPVVTQGSDAQAL TQDDGVAKLSVNTPNNRQPLT
ITVRTKKEGIPDARQATRTMQAQPYSTMHNSNYLHLSVSRVELKPGDNLNVNFHLRTDAGQEAKIRYYT
YLVMNKGLKLLKAGRQVREPGQDLVVL SLPITPEFIPSFRLVAYYTLIGANGQREVVADSVWVDKDCVCG
TLVVKGDPRDNRQPAPGHQTTLRIEGNQGARVGLVAVDKGVFVNLKKNKLTQSKIWDVVEKADIGCTPGS
GKNYAGVFM DAGLTFKTNQGLTQDREDPECAKPAARRRRSVQLMERRMDKAGQYTDKGLRKCCEGMRD
IPMKYSCQRRARLITQGESCLKAFMDCCNYITKLRQHRDHVGLARSVDDEDIPEEDIISRSHPES
WLWTIEELKEPEKNGISTKVMNIFLKDSITTWELAVSLSDKKGICVADPYEITVMQDFIDLRLPYSVV
RNEQVEIRAVLFNYREQEKLKVRVELLHNPAFCSMATAKKRYQTIEIPPKSSVAVPYVIVPLKIGLQEV
EVKAAVFNHFISDGVKILKVVPEGMRVNKTVAVRTLDPEHLGQGGVQREDVPAADLSDQVPDSDSETRI
LLQGTPVAQMAEDA V DGERLKHLLIVTPSGCGEQNMIGMPTVIAVHYLDQTEQWEKFGLEKRQEALELIK
KGYTQQLAFKQPSSAYAAFNRRPSTWL TAYVVKVFLSAAANLAIIDSQVLCGAVKWLILEKQKPDGVFQE
DGPVIHQEMIGFRNTKEADVSLTAFVLIALQEARDICEGQVNSLPGSINKAGEYLEASYLNLQRPYTV
IAGYALALMKNLEEPYLT KFLNTAKDRNRWEEPGQQLYNVEATSYALLALLLLKDFDSVPPVVRWLNQR
YYGGGYGSTQATFMVFAQALAQYQTDVDPDKDLNMDVSLHLPSSRSPTVFRLLWESGSLRSEETKQNEGF
SLTAKGKGQGTLSVVTVYHAKVKGKATCKKFDLRVTIKPAPETAKKQDAKSSMILDICTRYLGDV DATM
SILDISMGTGFIPTNDLELLSSGVDRYISKYEMDKAFSNKNTLIIYLEKISHSEEDCLSFVHVQFNVG
LIQPGSVKVSYYNLEESCTRFYHPEKDDGMLSKLCHNEMCRCAEENCFMHQSQDQVSLNERLDKACEPG
VDYVYKTKLTTIELSDDFDEYIMTIEQVIKSGSDEVQAGQERRFISHVKCRNALKLQK GKQYLMWGLSSD
LWGEKPNTSYIIGKDTWVEHWPEAECCQDQKNQKCEDLGAF TETMVVFGCPN
  
```

TRTRPLEQKLISEEDLAANDILDYKDDDDKV

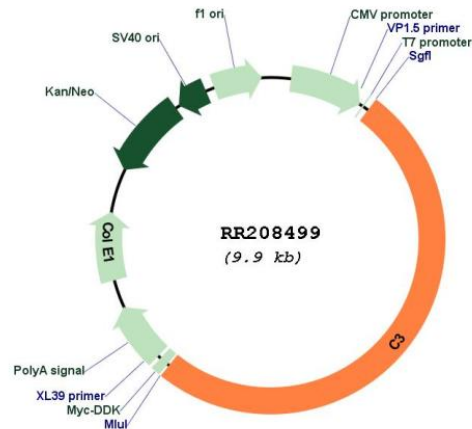
Restriction Sites:

SgfI-MluI

Cloning Scheme:



* The last codon before the Stop codon of the ORF

Plasmid Map:


ACCN: NM_016994

ORF Size: 4989 bp

OTI Disclaimer: The molecular sequence of this clone aligns with the gene accession number as a point of reference only. However, individual transcript sequences of the same gene can differ through naturally occurring variations (e.g. polymorphisms), each with its own valid existence. This clone is substantially in agreement with the reference, but a complete review of all prevailing variants is recommended prior to use. [More info](#)

OTI Annotation: This clone was engineered to express the complete ORF with an expression tag. Expression varies depending on the nature of the gene.

Components: The ORF clone is ion-exchange column purified and shipped in a 2D barcoded Matrix tube containing 10ug of transfection-ready, dried plasmid DNA (reconstitute with 100 ul of water).

Reconstitution Method:

1. Centrifuge at 5,000xg for 5min.
2. Carefully open the tube and add 100ul of sterile water to dissolve the DNA.
3. Close the tube and incubate for 10 minutes at room temperature.
4. Briefly vortex the tube and then do a quick spin (less than 5000xg) to concentrate the liquid at the bottom.
5. Store the suspended plasmid at -20°C. The DNA is stable for at least one year from date of shipping when stored at -20°C.

RefSeq: [NM_016994.2](#), [NP_058690.2](#)

RefSeq Size: 5091 bp

RefSeq ORF: 4992 bp

Locus ID: 24232
UniProt ID: [P01026](#)
Cytogenetics: 9q12
MW: 186.3 kDa
Gene Summary: putative complement component C3; likely involved in innate immune response [RGD, Feb 2006]