

Product datasheet for **RR208468**

Akap5 (NM_133515) Rat Tagged ORF Clone

Product data:

Product Type:	Expression Plasmids
Product Name:	Akap5 (NM_133515) Rat Tagged ORF Clone
Tag:	Myc-DDK
Symbol:	Akap5
Synonyms:	Akap79; AKAP150; P150
Mammalian Cell Selection:	Neomycin
Vector:	pCMV6-Entry (PS100001)
E. coli Selection:	Kanamycin (25 ug/mL)



[View online »](#)

ORF Nucleotide
Sequence:

>RR208468 representing NM_133515
Red=Cloning site Blue=ORF Green=Tags(s)

TTTTGTAATACGACTCACTATAGGGCGGCCGGAATTCGTGACTGGATCCGGTACCGAGGAGATCTGCC
GCC**CGGATCGCC**

ATGGAGACCAGCGTTTCTGAGATCAAATCGAGACTAAGGATGAGAAGAGACCAGAAGCAGCCAGTCTCTC
AGAAAGAGAGGCAGGAGAGAAAAACAGCCACACTGTGCTTCAAGAGAAGGAAGAAAGTGAACAAGAAGAA
GGCCAAAGCTGGTTCCAAGACTGCTGAGGAGACAGAGAAGCATGCCCCAGAAGCTGGGGTTCTGGTCAG
CGGCAACCAGCGGGGCCTGGGCCTCCATTAACGCCTTGTGACACACAGGAAACCGTCCGAGTCTGCAG
AGAAGCAGAAGCCATCTGAGGCTGAAATGCAGCCTGAGGATGGAGCTCTTCTAAGAAGAAGACAAAATC
CAAACCTAAGATTCTTGCATACGATTCTCAAGAGGGGCAAAAGAGAAGTCGTCTTCCAACTCACAGAA
GATTCAGGCTATGTCGAGTCCAGGGAGAGGCAGACGATTTGGAGATAAAAGCCAGATCCAGCCCGATG
AGCAGGCAACCCAGGCTAAGTCCACCCAGGGCCTACAGGAAGATGTGATAGTGAGAGATGGTAAGGAGAT
CCAAGAATCACACATAAGCAACAACGTCATATCGGGAGAGCATGTGATTGGCATAGAAGTGAATTAGAA
AAGGAATCTTCTGCTCTCCGGATGAGAAGTCCAGGGAGTAAAAGGAGGCTAAAGTGATTCTGGTAAAGC
AGGGTGTTCAGGTACAGGAAGCAAGTGTGCTTGAGAATTCAGCAGCAGACAGCCCTCAGCCAGTACTTC
TACTGCTCCTCTCTCACCAGCAACCACACATCAACTCGGTCTGGAAGAACCAGTGACAGCATCCGGGAA
AGTGCACCAAGTGGAAAAGATGACGGAAGGAGAAAAGACTGCTGCTGAAGAAAAGAAAATCAGGAGAGACTG
CGCTGGCCAGGCAGAGGAGGCTTCTTCTGTGACCCAGGCAGACAAAAGTGTACTAAGCCAGGCAGAAAG
AGCTACAGTGGCCACACAGAGGAAGCTACTGTGATCCAGGCACAGAGTCAGGCAAGGAAGGTAAGTAACTG
AACCAGGCAGAGGAAGCTACAGTGGCCAGGCAAAAGAAAAGTGTATTGAGTCAGGCAGAGGAAGTAAACTG
TGAGCCAGATAGAAGAAGCTGCAATTAGCCAGGCAAAAGAAAAGTACAGTAGGACAAGCAAAGGAAGCTAT
AGTTAGCCAGGCAGAGGAAGCTATAGTTGGTCACACAGAGAAAAGCCACCATGGGTACGGCAGGGAAGCT
ACAGTTGGCCACATAGAGAAAACACAGTGGGCCAGGCAGAGGAAGCTACAGTGGGTCAAGCAGAGGAAG
CCACAGTGGGTCAAGCAGAGGAAGCCACAGTGGGTCAAGCAGAGGAAGCTACAGTTGGACAGGCAGAGGA
AGCTACAGTTGGTCAGGCAGGGGAAGCTACAGTTAGCCACATAGAGAAAACACAGTGGGCCAGGCAGAG
GAAGCTATAGTTGGTCAGGCAGAGGAAGCCACAGTGGGTCAAGCAGAGGAAGCCACAGTGGGTCAAGCAG
AGGAAGCTACAGTTGGCCAGGCAGAGGAAGCCACAGTGGATCAAGCAGAGGAAGCTACAGTTGGCCAGGC
AGAGGAAGCTACAGTTGGTCAGGCAGGGGAAGCTGCAGTTGGCCAGGCAGAGGAAGCTATAGTTGCTCAG
GCAGAGGAAGCCACAGTTGGTCAGGCAGGGGAAGCTACAGTTGGCCAAGCAGAGAAAAGCCACAGTTGGCC
AAGCAGAGGAACCCATAGTTGGCCAGGCAGAGGAAACTGTATTGAGGCATGCATCAGATCTGAAAGTAAA
TGGAGTTGATGCAGAGAAAACCAAGATCAGAAGAAAAGAAAAGAAATGGAGCCAATTGCTATTATCATAACA
GACACTGAAATCAGTGAATTTGATGTTAAGAAATCTAAAATGTCCCTAAGCAATTCCTAATTTCCATGG
AAAATGAGCAAGTGGGGTTTTTGTAAATGATAGTGATTTTCGAGGGGAGAACTTCAGAACAGTATGAAAC
ACTCTTAATAGAAAACAGCTTCTTCTCTCGTCAAGAATGCATCGAGTTGTCTGTAGAACAGCTGGTTAAC
GAAATGGTTTCTGAGGATAATCAAATAAATACGCTGTTCCAGGAAATGGTTTCTGAGGATAATCAAATAA
ATACGCTGTTCCAG

ACGCGTACGCGGCCGCTCGAGCAGAAACTCATCTCAGAAGAGGATCTGGCAGCAAATGATATCCTGGATT
ACAAGGATGACGACGAT AAGGTTTAA

Protein Sequence: >RR208468 representing NM_133515
 Red=Cloning site Green=Tags(s)

```
METSVSEIQIETKDEKRPEAASPQKERQERKTATLCFKRRKVNKKKAKAGSKTAEETEKHAPEAGGSGQ
RQPAGAWASIKRLVTHRKPSESAEKQKPSEAEMQPEDGALPKKTKSKLKIPCFIRFSRGAKRSRPSKLTE
DSGYVRVQGEADDLEIKAQIQPDEQATQAKSTQGLQEDVIVRDGKEIQESHISNNVISGEHVIGIELELE
KESSALRMRTPGSEKEAKVILVKQGVQVQEASVLENSAADSPQPVSTAPLSPATTHQLGLEEPSDSIRE
SAPSGKDDGRRKTAEEKKSGETALGQAEAEASSVQADKSVLSQAEAEATVGHTEEATVIQAQSQAKEGKL
NQAEAEATVAQAKETVLSQAEVVLKLSQIEEPAISQAKKATVGQAKEAIVSQAEAEIVGHTEKATMGQAEAA
TVGHIEKTTVGQAEAEATVGQAEAEATVGQAEAEATVGQAEAEATVGQAGEATVSHIEKTTVGQAE
EAVVGQAEAEATVGQAEAEATVGQAEAEATVDQAEAEATVGQAEAEATVGQAGEAAVQAEAEIVAQ
AEEATVGQAGEATVGQAEKATVGQAEPIVQAEETVLRHASDLKVNQVDAEKPRSEESKRMEPIAIIIT
DTEISEFDVKKSKNPKQFLISMENEQVGVFANDSDFEGRTSEQYETLLIETASSLVKNAIELSVEQLVN
EMVSEDNQINTLQEMVSEDNQINTLQ
```

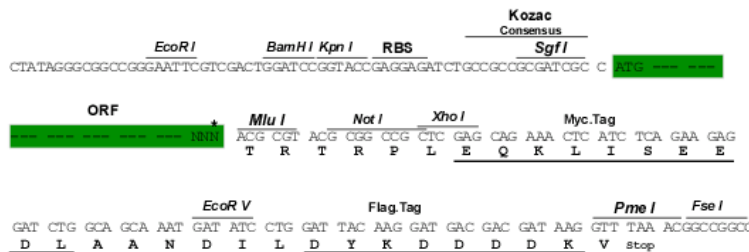
TRTRPLEQKLISEEDLAANDILDYKDDDDKV

Chromatograms: https://cdn.origene.com/chromatograms/ja1557_c07.zip

Restriction Sites: Sgfl-MluI

Cloning Scheme:

Cloning sites used for ORF Shuttling:



* The last codon before the Stop codon of the ORF

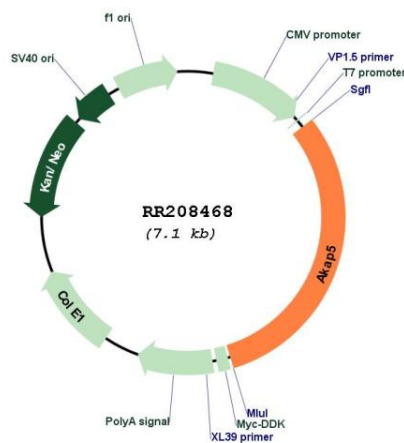
ACCN: NM_133515

ORF Size: 2142 bp

OTI Disclaimer: The molecular sequence of this clone aligns with the gene accession number as a point of reference only. However, individual transcript sequences of the same gene can differ through naturally occurring variations (e.g. polymorphisms), each with its own valid existence. This clone is substantially in agreement with the reference, but a complete review of all prevailing variants is recommended prior to use. [More info](#)

OTI Annotation: This clone was engineered to express the complete ORF with an expression tag. Expression varies depending on the nature of the gene.

Components:	The ORF clone is ion-exchange column purified and shipped in a 2D barcoded Matrix tube containing 10ug of transfection-ready, dried plasmid DNA (reconstitute with 100 ul of water).
Reconstitution Method:	<ol style="list-style-type: none"> 1. Centrifuge at 5,000xg for 5min. 2. Carefully open the tube and add 100ul of sterile water to dissolve the DNA. 3. Close the tube and incubate for 10 minutes at room temperature. 4. Briefly vortex the tube and then do a quick spin (less than 5000xg) to concentrate the liquid at the bottom. 5. Store the suspended plasmid at -20°C. The DNA is stable for at least one year from date of shipping when stored at -20°C.
RefSeq Size:	2700 bp
RefSeq ORF:	2145 bp
Locus ID:	171026
Cytogenetics:	6q24
MW:	75.9 kDa

Product images:


Circular map for RR208468